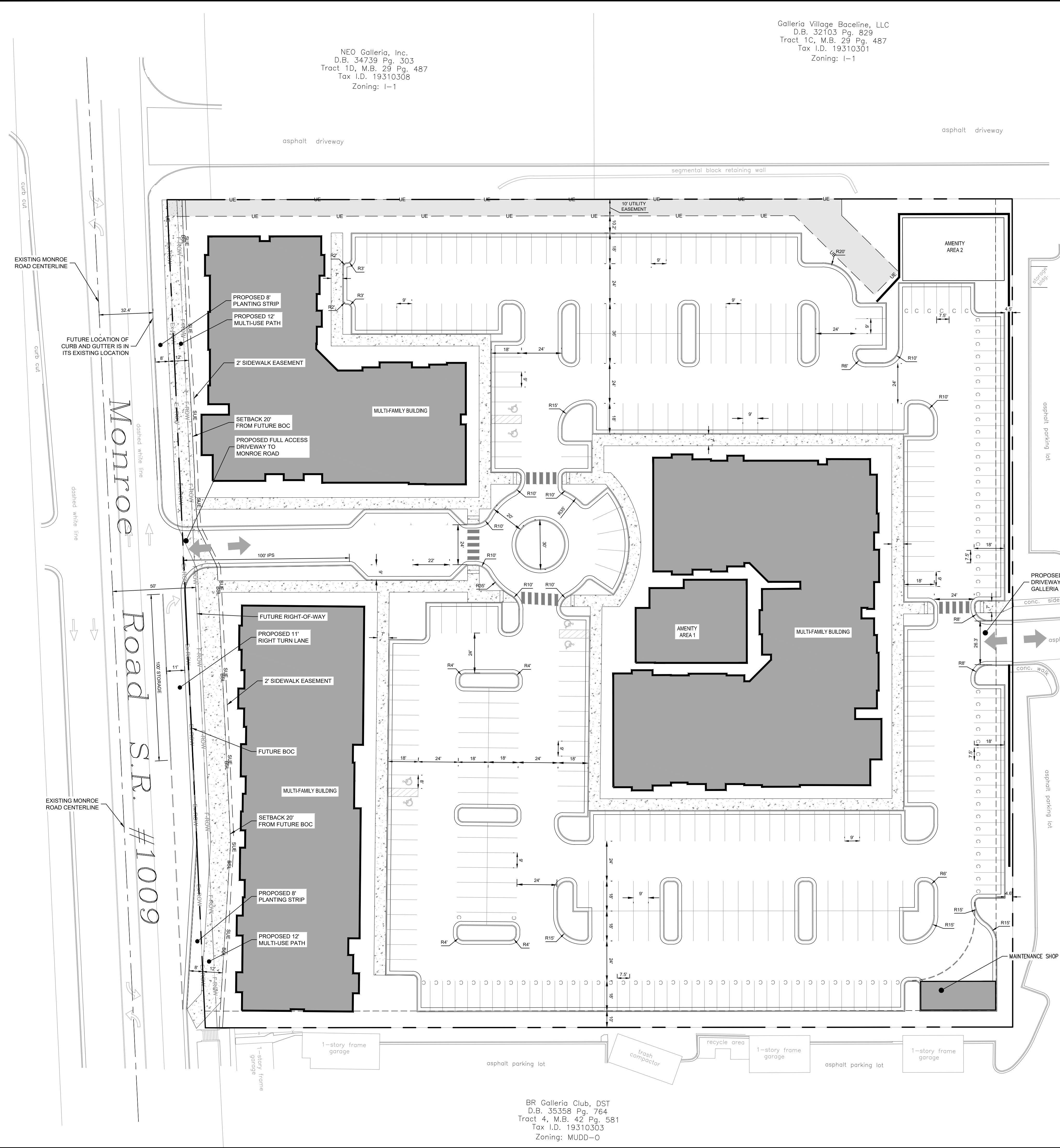


August 11, 2022 - 2:59pm By: Isabella Barden  
 K:\CHL\_PRA\017524\_Kairo Residential\02\_Galena Site\02 - DWG\Rezoning\02-1.dwg  
 This document, together with the concepts and designs presented herein, is an instrument of service. It is intended only for the specific purpose and client for which it was prepared. Reuse of and improper reliance on this document without written authorization and adaptation by Kimley-Horn and Associates, Inc. shall be without liability to Kimley-Horn and Associates, Inc.



NEO Galleria, Inc.  
 D.B. 34739 Pg. 303  
 Tract 1D, M.B. 29 Pg. 487  
 Tax I.D. 19310308  
 Zoning: I-1

Galleria Village Baseline, LLC  
 D.B. 32103 Pg. 829  
 Tract 1C, M.B. 29 Pg. 487  
 Tax I.D. 19310301  
 Zoning: I-1

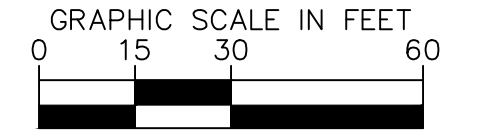
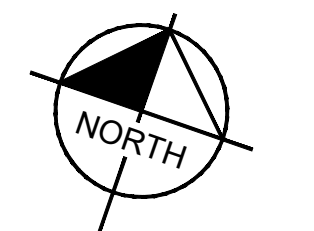
BR Galleria Club, DST  
 D.B. 36047 Pg. 873  
 Tract 4B, M.B. 29 Pg. 487  
 Tax I.D. 19310314  
 Zoning: UR-2 (CD)

BR Galleria Club, DST  
 D.B. 35358 Pg. 764  
 Tract 4, M.B. 42 Pg. 581  
 Tax I.D. 19310303  
 Zoning: MUDD-0

BR Galleria Club, DST  
 D.B. 35358 Pg. 764  
 Tract 4, M.B. 42 Pg. 581  
 Tax I.D. 19310303  
 Zoning: MUDD-0



**SITE LOCATION MAP**  
 1"=1000'



REZONING LEGEND	
EXISTING ROW	--- Ex-ROW ---
PROPOSED ROW	--- Pr-ROW ---
PROPERTY LINE	-----
BUILDING SETBACK	BSL
BUILDING FOOTPRINT	[Solid Grey Box]
PROPOSED ACCESS LOCATION	[Double Arrow]
PROPOSED STUB LOCATION	[Single Arrow]
UTILITY EASEMENT	--- UE ---
SIDEWALK UTILITY EASEMENT	--- SUE ---
PROPOSED SIDEWALK	[Stippled Box]

No.	REVISIONS	DATE

**Kimley»Horn**  
 © 2022 KIMLEY-HORN AND ASSOCIATES, INC.  
 200 SOUTH TRYON ST., STE. 200, CHARLOTTE, NC 28202  
 PHONE: 704-333-5131  
 WWW.KIMLEY-HORN.COM

**REZONING PETITION**  
**#2022-031**

DESIGNED BY	EGD
DRAWN BY	EGD
CHECKED BY	JHR

**REZONING SITE PLAN**

KAIRO MONROE  
 10005 MONROE ROAD  
 CHARLOTTE, NC 28270  
 MECKLENBURG COUNTY  
 KAIRO RESIDENTIAL  
 711 NAVARRO STREET, SUITE 400  
 SAN ANTONIO, TEXAS 78205

DATE	09-20-2022
PROJECT NO.	017524002
SHEET NUMBER	

**RZ-1**

