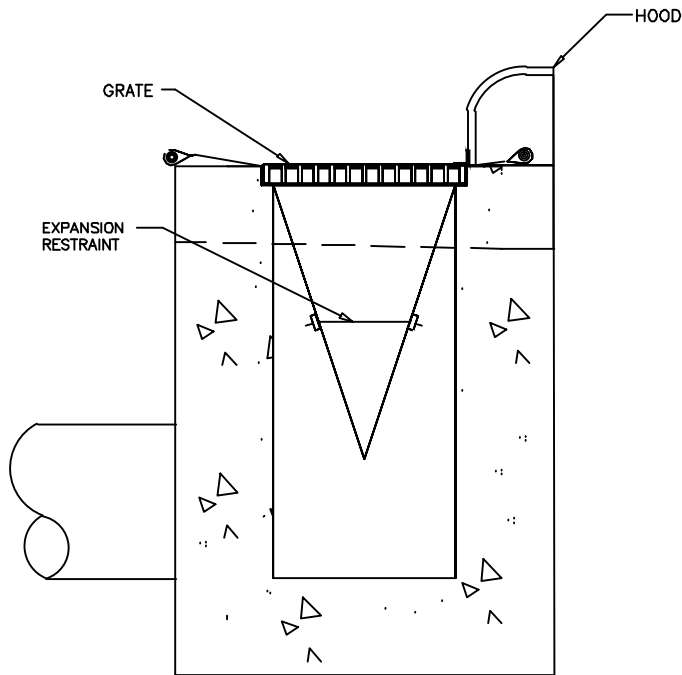
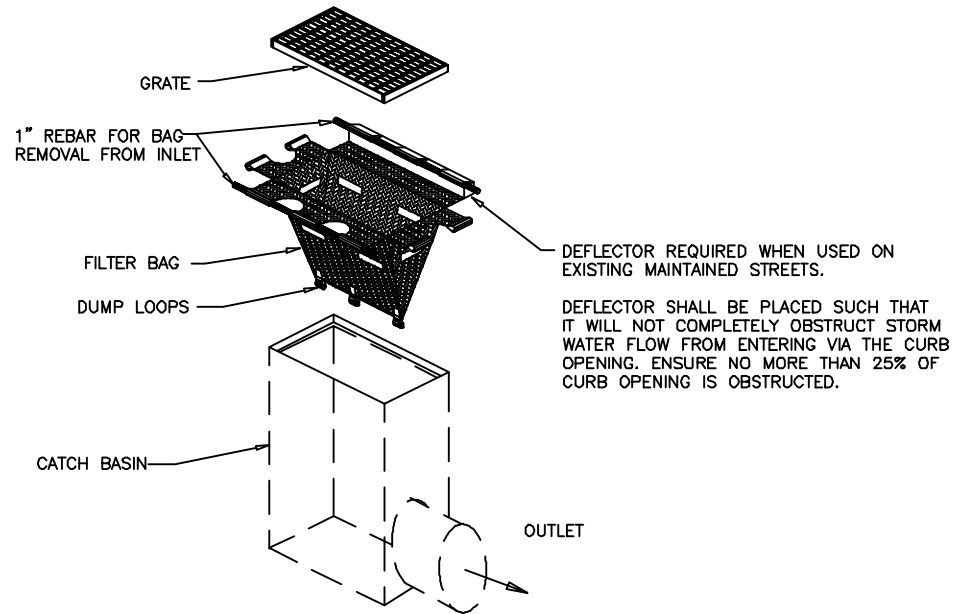


**NOTES:**

1. INLET MAINTENANCE SHALL BE DOCUMENTED IN PROJECT LOG BOOK.
2. FILTER TYPES SHALL BE APPROVED BY THE CITY INSPECTOR PRIOR TO INSTALLATION.
3. FILTER BAGS MAY BE REMOVED WHEN SITE IS STABILIZED AT THE DIRECTION OF THE ENGINEER.
4. FILTER BAGS SHALL BE REMOVED PRIOR TO STREET ACCEPTANCE AND/OR CLOSE OUT OF GRADING PERMIT.
5. FILTER BAGS SHALL BE CLEANED OR REPLACED ON A REGULAR BASIS (NOT BE MORE THAN HALF FULL AT ANY TIME).
6. FILTER BAGS MAY BE INSTALLED IN EXISTING CITY OR NCDOT ROADS AS LONG AS STORM DRAINAGE IS NOT IMPEDED.



SECTION



INSTALLATION

NOT TO SCALE



**CITY OF CHARLOTTE**  
**LAND DEVELOPMENT STANDARDS**  
 INCLUDES CHARLOTTE ETJ

CATCH BASIN INLET PROTECTION

STD. NO.	REV.
30.15	13