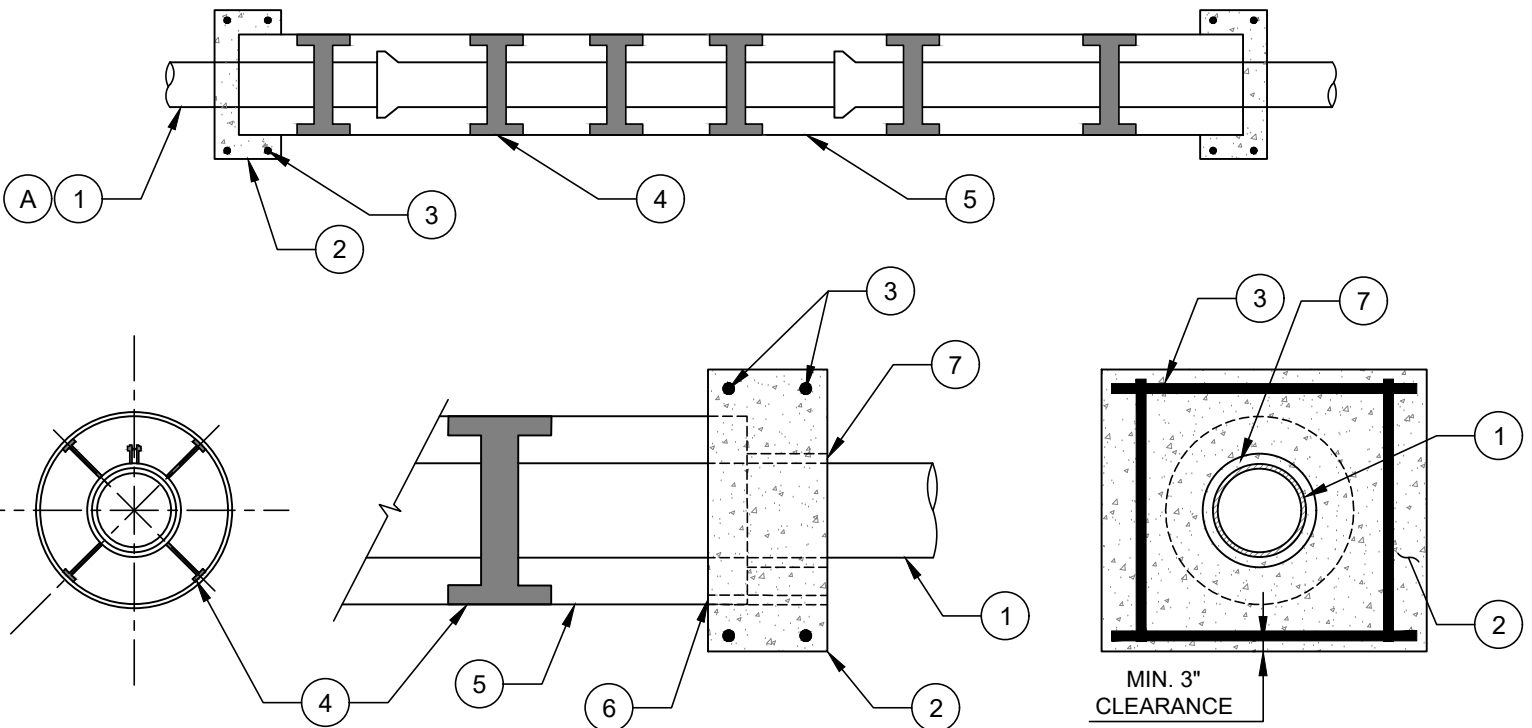


- NO. DESCRIPTION:**
1. CARRIER PIPE.
 2. 3,600 PSI CONCRETE SQUARE PLUG (EACH END).
 3. (2) - #4 REBAR RINGS.
 4. CASING SPACERS (MIN. 3 PER PIPE SEGMENT) OR APPROVED EQUALS. REFER TO TECHNICAL SPECIFICATIONS FOR SPECIFIC CASING SPACERS.
 5. STEEL ENCASEMENT PIPE.
 6. 1" DIAMETER WEEP HOLE.
 7. WRAP PIPE W/ 1" THICK INSULATION.
 8. 8" BRICK AND MORTAR, OR OTHER APPROVED MATERIALS, END SEAL WITH 1" DIAMETER WEEP HOLE AT BOTTOM OF END SEAL (ON BOTH ENDS OF ENCASEMENT).
 9. DIP, FRP, PVC, OR HDPE RJ CARRIER PIPE. HDPE USED ONLY IF SMALL DIAMETER AND WHERE ANNULAR GROUTING IS NOT REQUIRED.
 10. CASING PIPE WITH WALL THICKNESS PER PLANS. (OR JACKING PIPE WHICH MAY ALSO BE THE CASING PIPE FOR A PERMANENT PRODUCT PIPE).
 11. NON-WOVEN FILTER FABRIC OVER WEEP HOLE.
 12. #57 STONE IN NON-WOVEN FILTER FABRIC BAG PLACED SNUG OVER THE WEEP HOLE.

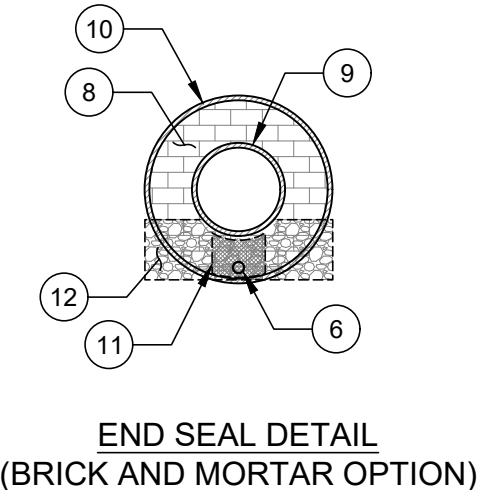
- NOTES:**
- A. ALL PIPE SHALL BE RESTRAINED JOINT.
 - B. DEPENDING ON TYPE OF ROADWAY CROSSED, CELLULAR CONCRETE FILL MAY BE REQUIRED IN THE ANNULAR SPACE BETWEEN THE CARRIER PIPE AND THE TUNNEL/CASING PIPE (PERMIT DEPENDENT).



CASING DETAIL

ELEVATION VIEW
END SEAL DETAIL

END SEAL DETAIL



END SEAL DETAIL
(BRICK AND MORTAR OPTION)

NO SCALE
VERSION 1.0
DATE 04/2024
DETAIL 21.2