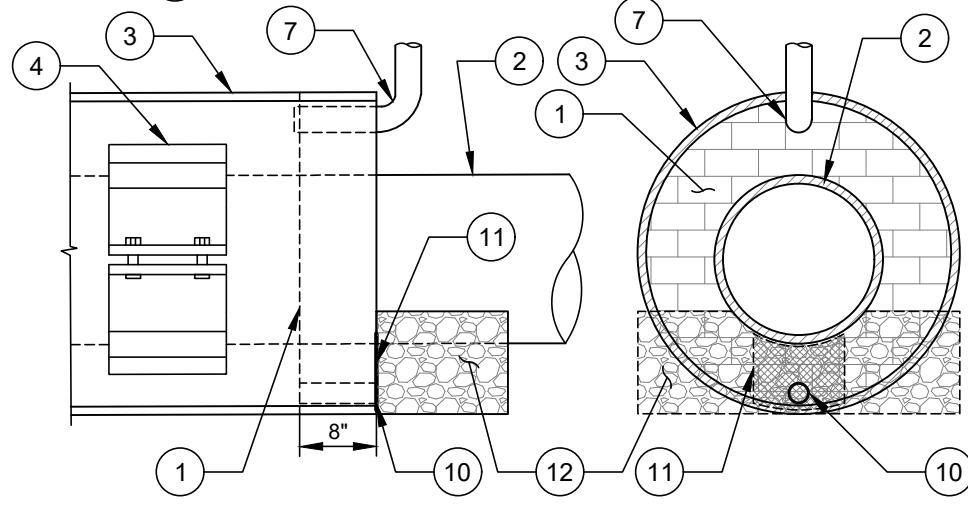


**SECTION A-A
CASING DETAIL**



**SECTION B-B
ELEVATION VIEW
END SEAL DETAIL**

**SECTION B-B
END SEAL DETAIL**

- NO. DESCRIPTION:**
1. 8" BRICK AND MORTAR, OR OTHER APPROVED MATERIALS, END SEAL WITH 1 INCH DIAMETER WEEP HOLE AT BOTTOM OF END SEAL (ON BOTH ENDS OF ENCASEMENT).
 2. DIP, FRP, OR RJ PVC CARRIER PIPE.
 3. CASING PIPE WITH WALL THICKNESS PER PLANS. (OR JACKING PIPE WHICH MAY ALSO BE THE CASING PIPE FOR A PERMANENT PRODUCT PIPE).
 4. CASING SPACER. SEE TECHNICAL SPECIFICATIONS.
 5. NORMAL SPACING FOR CASING SPACERS IS 3 PER 18' LENGTH OF PIPE, ONE SUPPORT AT EACH END AND A SUPPORT AT THE CENTER (UNLESS THE MANUFACTURER REQUIRES MORE DUE TO LOAD LIMITATIONS OF THE CASING SPACER).
 6. STREET.
 7. 2" GALVANIZED VENT PIPE AT HIGH END OF SEWER MAINS ONLY (ONLY WHEN DIRECTED BY CLTW ENGINEER).
 8. CASING SPACER DIAMETER SHALL EQUAL THE INSIDE DIAMETER OF ENCASEMENT PIPE LESS 1 INCH.
 9. 3/4" DIAMETER STAINLESS STEEL BOLTS.
 10. 1" DIAMETER WEEP HOLE.
 11. NON-WOVEN FILTER FABRIC OVER WEEP HOLE.
 12. #57 STONE IN NON-WOVEN FILTER FABRIC BAG PLACED SNUG OVER THE WEEP HOLE.
 13. RESTRAINED JOINT IN BELL (RJIB) DR14 PVC PIPE.
 14. BELL STOP AT THE PIPE BELL HOME MARK. MEGA-STOP SERIES 5000 OR APPROVED EQUAL.

- NOTES:**
- A. FIELD MODIFY AS REQUIRED TO PROVIDE DESIGN SLOPE IN CARRIER PIPE.
 - B. DEPTH AS NECESSARY TO MEET MINIMUM COVER AND/OR MINIMUM UTILITY SEPARATION REQUIREMENTS.
 - C. TRACER WIRE SHALL BE INSTALLED PER CLTW TRACER WIRE DETAILS AND SPECIFICATIONS AS APPLICABLE.
 - D. REFER TO SPECIFICATIONS FOR CORROSION PROTECTION MEASURES.
 - E. REFER TO SPECIFICATIONS AND APPROPRIATE STANDARD DETAILS FOR CATHODIC PROTECTION.