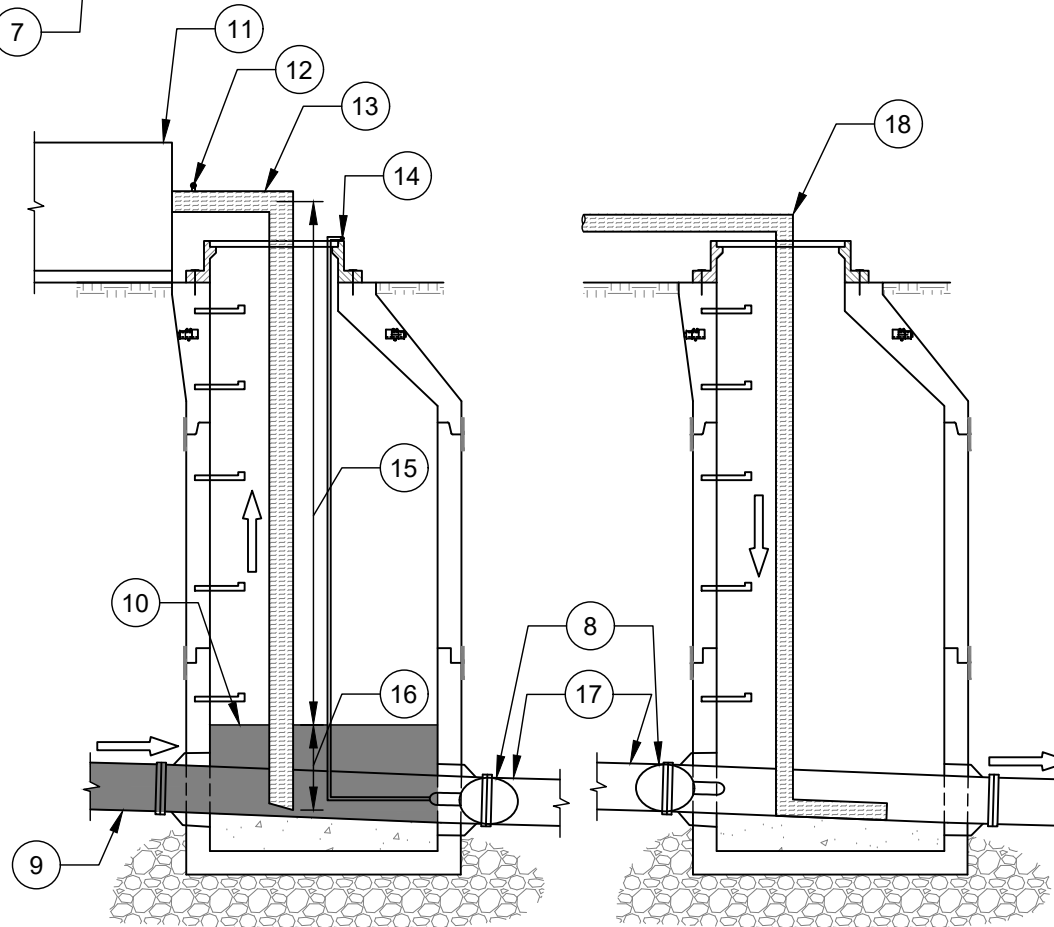


BYPASS PUMPING



TYPICAL SUCTION MANHOLE CROSS SECTION

TYPICAL DISCHARGE MANHOLE CROSS SECTION

- | NO. | DESCRIPTION: |
|-----|--|
| 1. | UPSTREAM MANHOLE; SEE TYPICAL SUCTION MANHOLE CROSS SECTION (THIS SHEET). |
| 2. | BACK-UP PUMPS. |
| 3. | LIGHT TOWER FOR PUMP WATCH OVERNIGHT. |
| 4. | PRIMARY PUMPS. |
| 5. | CHECK VALVE. |
| 6. | MANIFOLD. |
| 7. | DOWNSTREAM MANHOLE; SEE TYPICAL DISCHARGE MANHOLE CROSS SECTION (THIS SHEET). |
| 8. | PIPE PLUG. ONE PLUG SHALL BE INSTALLED IN THE OUTGOING PIPE OF THE MANHOLE WHERE THE PLUGGING OCCURS AND THEN A SECOND PLUG INSTALLED IN THE NEXT DOWNSTREAM MANHOLE IN THE INCOMING PIPE. |
| 9. | UPSTREAM PIPE WITH LIVE FLOW. |
| 10. | FLUID LEVEL. |
| 11. | PUMP. |
| 12. | GAUGE. |
| 13. | SUCTION PIPE. |
| 14. | AIR GAUGE. |
| 15. | STATIC SUCTION LIFT. |
| 16. | SUBMERGENCE. |
| 17. | DOWNSTREAM PIPE / PROJECT WORK AREA. |
| 18. | DISCHARGE PIPE. |