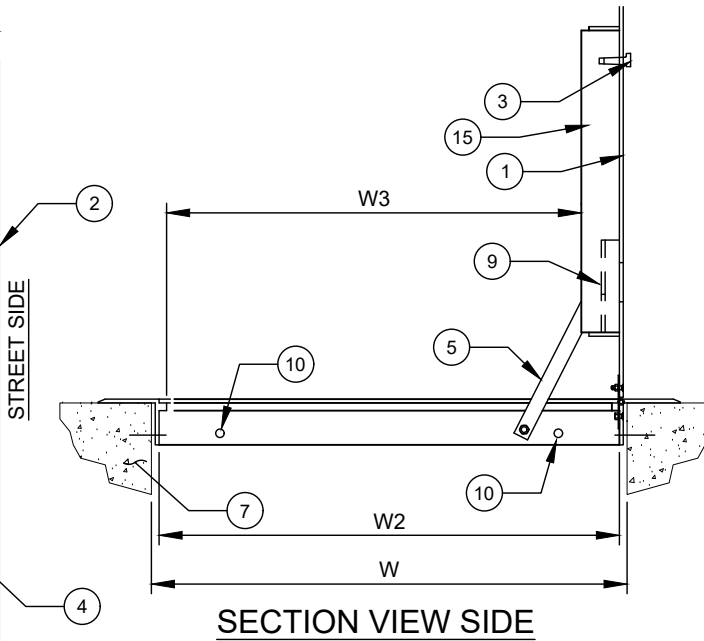
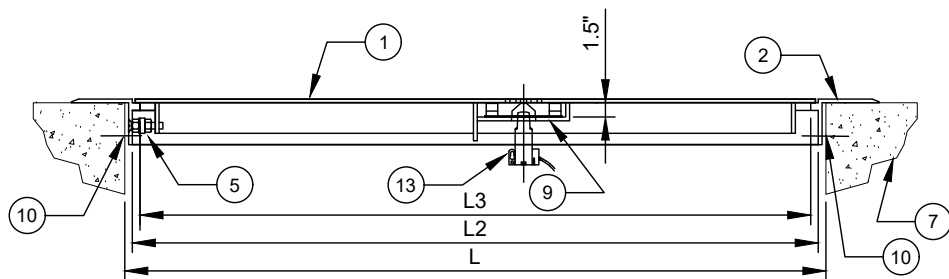


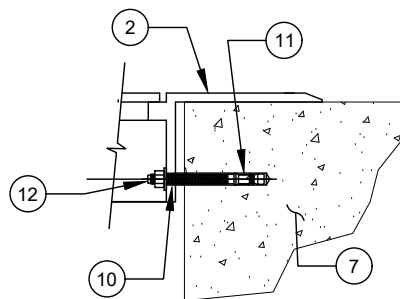
PLAN VIEW



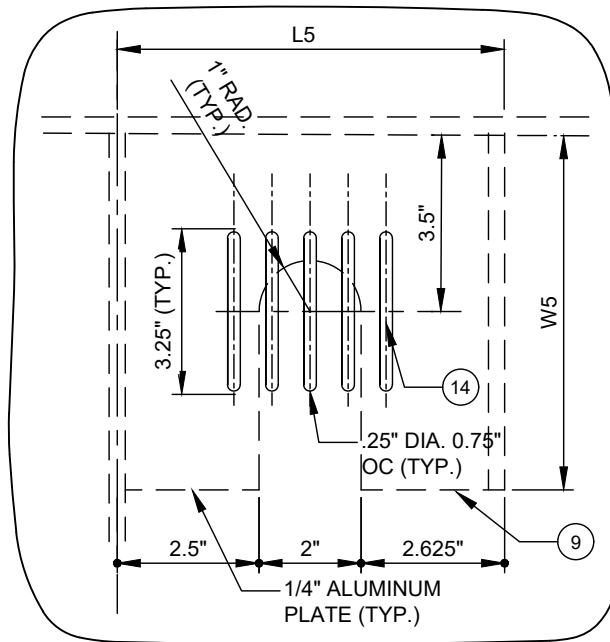
SECTION VIEW SIDE



SECTION VIEW FRONT



ANCHOR DETAIL



TRANSMITTER SLOT DETAIL & TRANSMITTER SUPPORT

NO. DESCRIPTION:

1. SINGLE DOOR LEAF - REINFORCED.
2. ANGLE DOOR FRAME.
3. FLUSH DROP HANDLE.
4. RECESSED PADLOCK ASSEMBLY (STANDARD SIZE) WITH STAINLESS STEEL STAPLE.
5. AUTOMATIC HOLD OPEN ARM WITH VINYL GRIP.
6. 2" LETTERING MILLED INTO DOOR LEAF.
7. CONCRETE VAULT OR PEDESTRIAN SIDEWALK.
8. PADLOCK TO BE FURNISHED BY CLTW.
9. TRANSMITTER SUPPORT BRACKET.
10. 9/16-INCH DIAMETER DRILLED HOLE (# AS REQUIRED).
11. 1/2-INCH DIAMETER HOLE IN CONCRETE.
12. 1/2-INCH DIAMETER X 4-1/2-INCH EPOXY ADHESIVE ANCHOR - (RED HEAD, HILTI OR APPROVED EQUAL).
13. TRANSMITTER.
14. TRANSMITTER SLOT.
15. ATTACH ENGRAVED LABEL, WITH PREMISE NUMBER, TO UNDERSIDE OF DOOR, NEAR THE LIFTING HANDLE.

DESIGN REQUIREMENTS:

- a. MATERIAL - STEEL A36, EXCEPT AS NOTED.
- b. LIVE LOAD - 1,000 LBS. / SQ. FT. MINIMUM - PEDESTRIAN LOADING. MAXIMUM DEFLECTION 1/150 OF SPAN.
- c. DOOR LEAF - 1/4-INCH THICK STEEL DIAMOND PLATE.
- d. FINISH - HOT DIPPED GALVANIZED. ENTIRE ASSEMBLY SHALL BE GALVANIZED. GALVANIZED COATING SHALL BE A MINIMUM OF 3.9MILS PER ASTM A123 GRADE 100. SLIP RESISTANT MEETING ADA REQUIREMENTS.
- e. HINGE / LOCKNUTS / BOLTS - STAINLESS STEEL - TYPE 316.
- f. HOLD OPEN ARM - STAINLESS STEEL - TYPE 316.
- g. FORCE REQUIRED TO OPEN LEAF SHALL BE 35 LBS. MAXIMUM.
- h. ACCESS DOOR SHALL BE MODEL AS MANUFACTURED BY U.S.F. FABRICATION, MODEL AS MANUFACTURED BY EJ CORP, OR APPROVED EQUAL.

WARNING NOTE:

THIS DOOR IS NOT TO BE USED IN OR ADJACENT TO DRIVEWAYS OR ANY AREA SUBJECT TO VEHICLE WHEEL LOADS, OR ANY LOAD GREATER THAN 1,000 PSF.

DIMENSIONS (INCHES)

CONC. CLEAR OPENING		FRAME OPENING		CLEAR OPENING		OVERALL FRAME SIZE		BRACKET LENGTH	BRACKET WIDTH	BASE WT. W/O OPTIONS
L	W	L2	W2	L3	W3	L4	W4	L5	W5	POUNDS
36	24	35	23	34	20	43	31	7.125	7	154