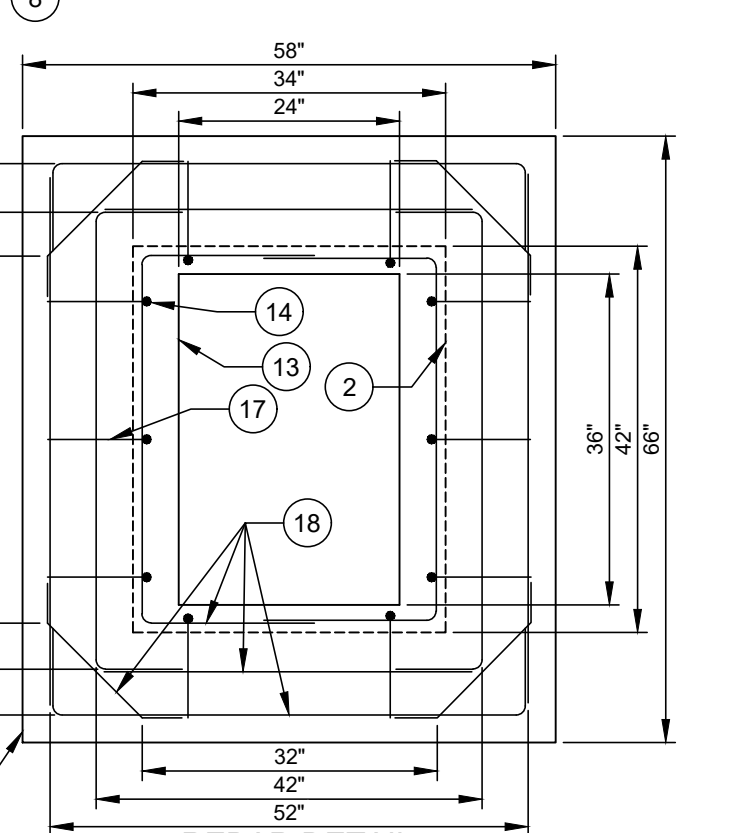
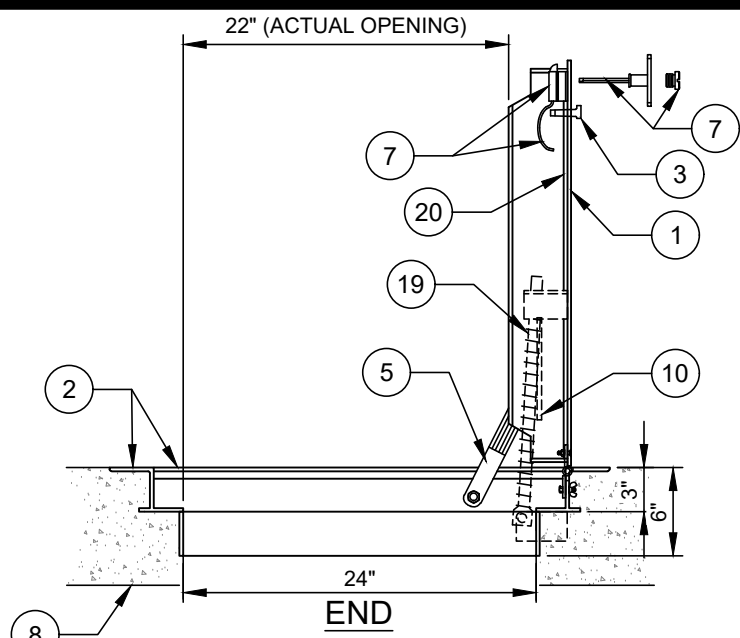


TRANSMITTER SLOT & TRANSMITTER SUPPORT DETAIL



REBAR DETAIL

- NO. DESCRIPTION:**
1. SINGLE DOOR LEAF - REINFORCED.
  2. CAST-IN STEEL DOOR FRAME W/ 3" SKIRT.
  3. FLUSH DROP HANDLE.
  4. RECESSED PADLOCK ASSEMBLY (STANDARD SIZE) WITH STAINLESS STEEL STAPLE / SPRING LOADED HINGED LID.
  5. AUTOMATIC HOLD OPEN ARM WITH VINYL GRIP.
  6. 2" LETTERING MILLED INTO DOOR LEAF.
  7. SLAM LOCK / THREADED PLUG / REMOVABLE KEY / INSIDE HANDLE.
  8. CONCRETE FRAME - CAST IN PLACE.
  9. PADLOCK TO BE FURNISHED BY CLTW.
  10. TRANSMITTER SUPPORT BRACKET.
  11. TRANSMITTER SLOT.
  12. TRANSMITTER.
  13. PRECAST CONCRETE VAULT WALL.
  14. DRILLED OR CAST HOLE - EPOXY ADHESIVE.
  15. 1/2-INCH EXPANSION MATERIAL (CONSTRUCTION JOINT).
  16. CONCRETE/ASPHALT HARDSCAPE.
  17. #5 REBAR ANCHOR.
  18. #4 REBAR.
  19. COMPRESSION SPRING ASSEMBLY - TYPE 300 STAINLESS STEEL.
  20. ATTACH ENGRAVED LABEL, WITH PREMISE NUMBER, TO UNDERSIDE OF DOOR, NEAR THE LIFTING HANDLE.

- DESIGN REQUIREMENTS:**
- A. MATERIAL - A36 STEEL HOT DIP GALVANIZED. ENTIRE ASSEMBLY SHALL BE GALVANIZED. GALVANIZED COATING SHALL BE A MINIMUM OF 3.9MLS PER ASTM A123 GRADE 100.
  - B. LIVE LOAD - AASHTO H - 20 - 44 WHEEL LOAD. (16,000# +30% IMPACT OVER 10" X 20" AREA).
  - C. DOOR LEAF - 1/4-INCH THICK STEEL DIAMOND PLATE.
  - D. FINISH - HOT DIP GALVANIZED, SLIP RESISTANT MEETING ADA REQUIREMENTS.
  - E. HINGE / LOCKNUTS / BOLTS - STAINLESS STEEL - TYPE 316.
  - F. SLAM LOCK / HOLD OPEN ARM - STAINLESS STEEL - TYPE 316.
  - G. ACCESS DOOR SHALL BE MODEL AHS, AS MANUFACTURED BY U.S.F. FABRICATION, OR APPROVED EQUAL.
  - H. BITUMINOUS PAINT SHALL BE APPLIED TO FRAME IN CONTACT AREA WITH CONCRETE.
  - I. REBARS SHALL BE ASTM A615 - GRADE 60.
  - J. REBAR SPLICE LENGTH SHALL BE 12" MINIMUM.
  - K. CONCRETE -  $f'c = 3,600$  PSI MINIMUM.
  - L. FORCE REQUIRED TO OPEN LEAF (W/SPRINGS) SHALL BE MINUS 5 LBS. MINIMUM AND 35 LBS. MAXIMUM.
  - M. COMPRESSION SPRING ASSEMBLY SHALL BE DESIGNED BY MANUFACTURERS TO CONFORM TO LIFTING FORCE REQUIREMENTS - NUMBER OF SPRINGS AS REQUIRED.

**WARNING NOTE:**  
 THIS DOOR IS NOT TO BE USED IN ROADWAYS OR DRIVEWAYS. IT MAY BE USED IN OFF STREET LOCATIONS WHICH MAY OCCASIONALLY BE SUBJECT TO H-20 WHEEL LOADS.

**NOTES:**  
 THIS INSTALLATION DETAIL AND REINFORCED CONCRETE FRAME REQUIREMENTS WILL BE USED ON ALL H-10 OR H-20 LOAD RATED ACCESS DOORS REGARDLESS OF DOOR SIZE.