

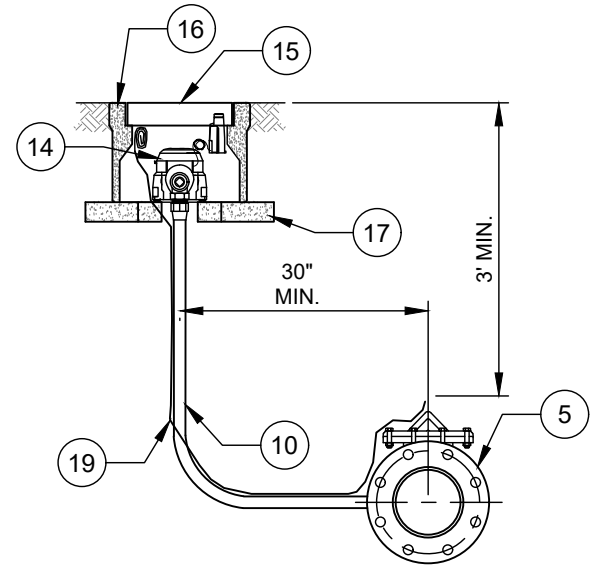
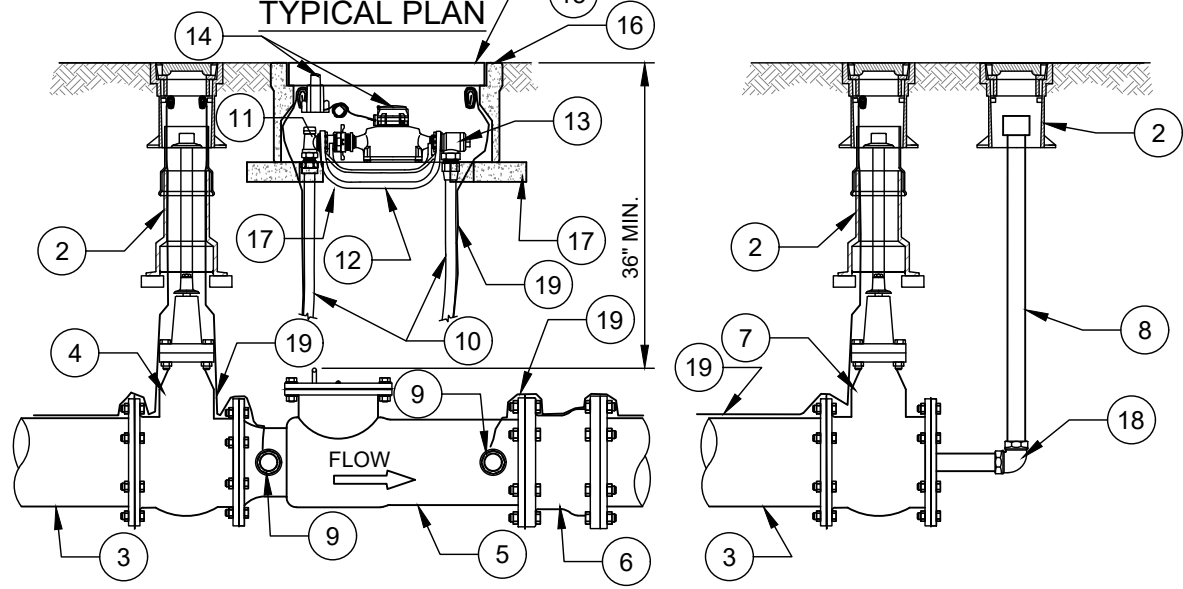
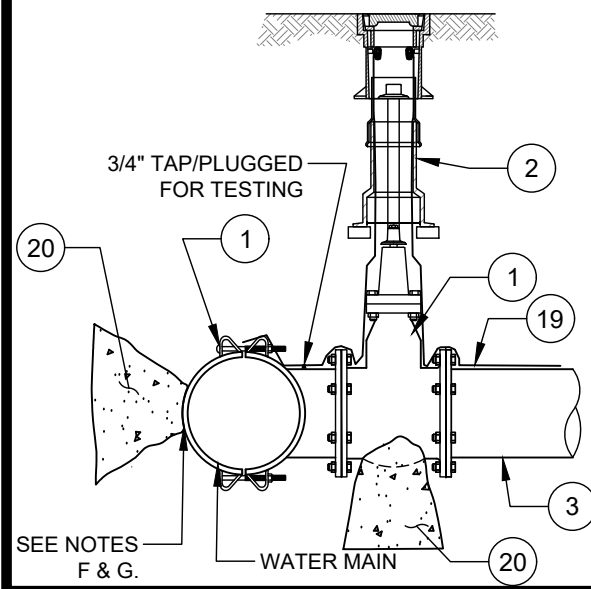
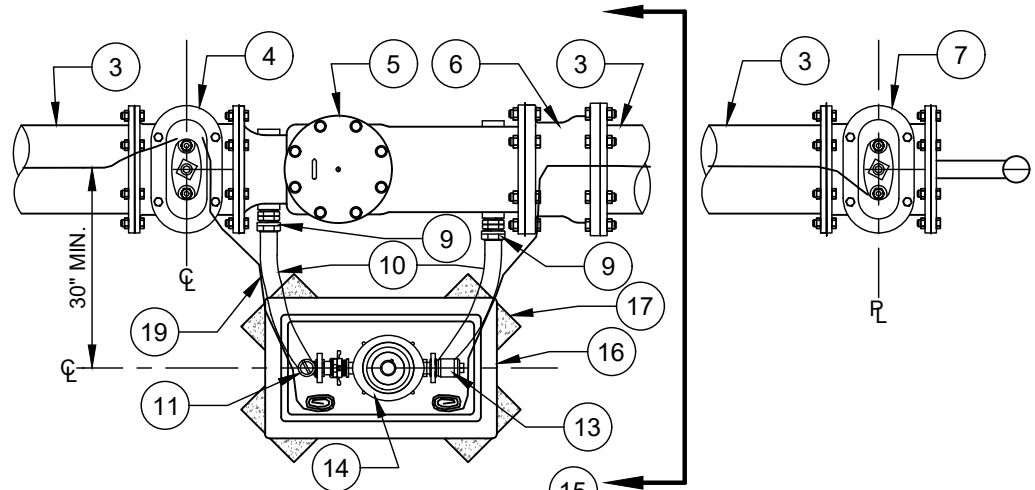
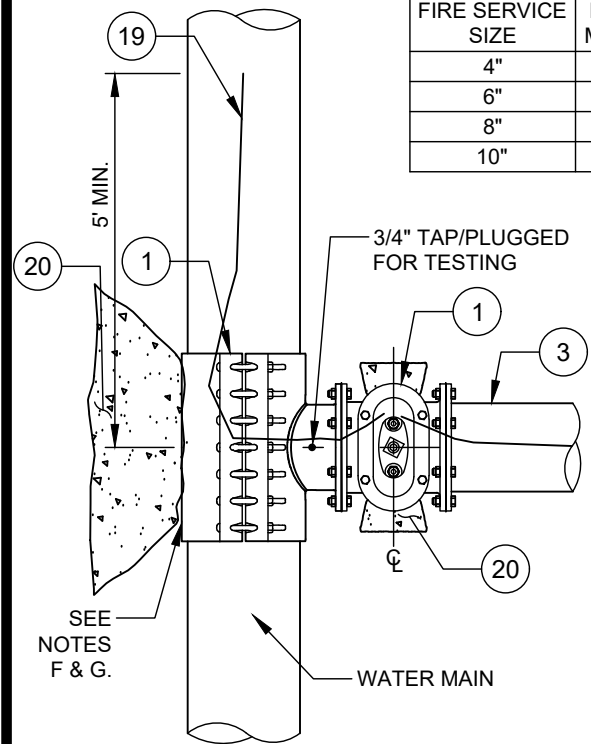
FIRE SERVICE SIZE	DETECTOR METER SIZE
4"	1"
6"	1"
8"	1"
10"	1"

NOTES:

- A. ALL FLANGE HARDWARE (BOLT/WASHER/NUT) SHALL BE STAINLESS STEEL - TYPE 304 WITH ANTI-SEIZE COMPOUND.
- B. ALL PIPE SHALL BE RESTRAINED JOINT DUCTILE IRON FROM TAP TO PROPERTY LINE VALVE.
- C. METER BOX TO BE FLUSH WITH GROUND OR CONCRETE SIDEWALK, GROUND SHALL SLOPE AWAY FROM METER BOX.
- D. ALL VALVES SHALL BE OPEN RIGHT - CLOCKWISE, EXCEPT NO. 7.
- E. ONE INCH METER SHALL BE INSTALLED IN STANDARD METER BOX PER STD. DETAIL.
- F. WRAP TAPPING SLEEVE WITH 2 LAYERS HDPE PLASTIC FILM (HDCLPE PER AWWA C-105) - 4 MILS EACH LAYER - EXTEND HDPE 2' EACH WAY FROM SLEEVE - DUCT TAPE OR ZIP LOCK TIE ENDS.
- G. CONCRETE THRUST BLOCKING REQUIRED AT TAPPING SLEEVE.
- H. ANGLE BALL VALVE NO. 11 PERMANENT LOCK (WITH CLTW SERIAL #) SHALL BE FURNISHED BY CLTW.

NO. DESCRIPTION:

- 1. TAPPING SLEEVE & FL X MJ TAPPING VALVE ON EXISTING MAIN. MJ TEE, FOSTER ADAPTOR, AND MJ GATE VALVE ON NEW MAIN.
- 2. STANDARD VALVE BOX ASSEMBLY (TYP.) - ALL VALVES.
- 3. RESTRAINED JOINT DUCTILE IRON PIPE.
- 4. FLANGE X MJ GATE VALVE ON LONG SIDE SERVICES. FLANGE X FL ADAPTER ON SHORT SIDE SERVICE (NOT SHOWN).
- 5. DETECTOR CHECK VALVE (FLANGE X FLANGE).
- 6. FLANGE X MJ ADAPTOR (OMIT WHEN PROPERTY LINE VALVE NO. 7 IS BOLTED DIRECTLY TO DETECTOR CHECK VALVE NO. 5).
- 7. MJ GATE VALVE (RESTRAINED, OPEN LEFT) AT PROPERTY LINE. (FL X MJ GATE VALVE BOLTED DIRECTLY TO DETECTOR CHECK VALVE NO. 5 - WHEN APPROVED).
- 8. TEMP. 2" PIPE GALV. STEEL (SCH 80) WITH THREADED COUPLING.
- 9. CTS X MNPT BRASS STRAIGHT COUPLING (WITH BRASS HEX REDUCING BUSHING - AS REQUIRED).
- 10. 1" COPPER TUBE - TYPE K.
- 11. 1" ANGLE BALL VALVE WITH LOCK WINGS (LOCK OPEN WITH LOCK FURNISHED BY CLTW) (CTS COMPRESSION X YOKE STAR NUT).
- 12. 1" METER YOKE BAR.
- 13. 1" SINGLE ANGLE CHECK VALVE (YOKE STAR NUT X CTS COMPRESSION).
- 14. 1" METER ASSEMBLY WITH AMR TRANSMITTER (BY CLTW).
- 15. GRAY SOLID POLYETHYLENE (HDPE) METER BOX LID PER STD. DETAIL.
- 16. GRAY STANDARD 1-INCH PLASTIC METER BOX PER STANDARD DETAIL. USE CONCRETE METER BOX ONLY WHEN METER IS IN SIDEWALK.
- 17. SOLID STANDARD CONCRETE BRICKS - DIAGONAL AT CORNERS - 4 EACH.
- 18. TEMP. MALLEABLE IRON (GALV.) 90° BEND (FNPT X FNPT).
- 19. AWG #12 GAUGE SOLID COPPER HDPE INSTALLATION TRACER WIRE WITH 30 MILS BLUE INSULATION, TERMINATE WITH 24" EXCESS WIRE (COILED) AT METER BOX AND VALVE BOX (TYP.).
- 20. CONCRETE THRUST BLOCKING - 3,600 PSI.



TYPICAL ELEVATION

SIDE ELEVATION