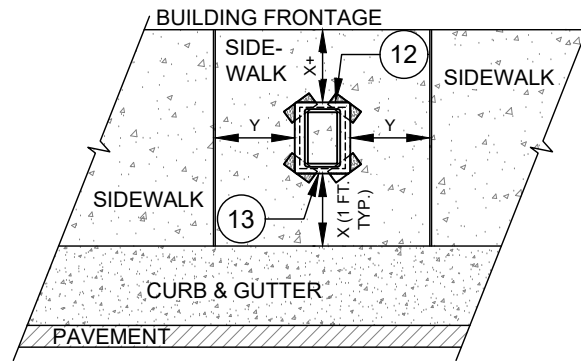


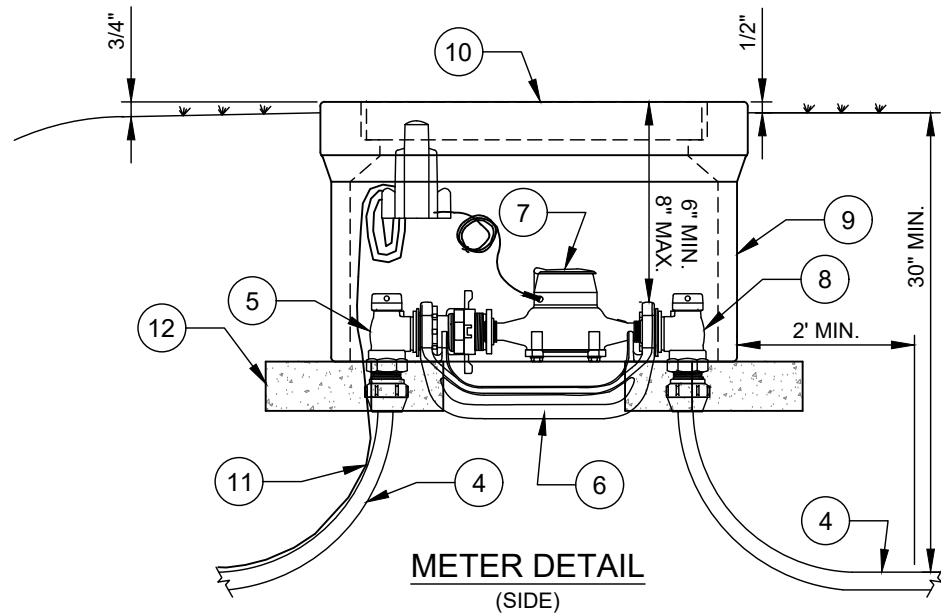
1" OR 3/4" SERVICE CONNECTION
(SHORT SIDE - IN PAVEMENT)



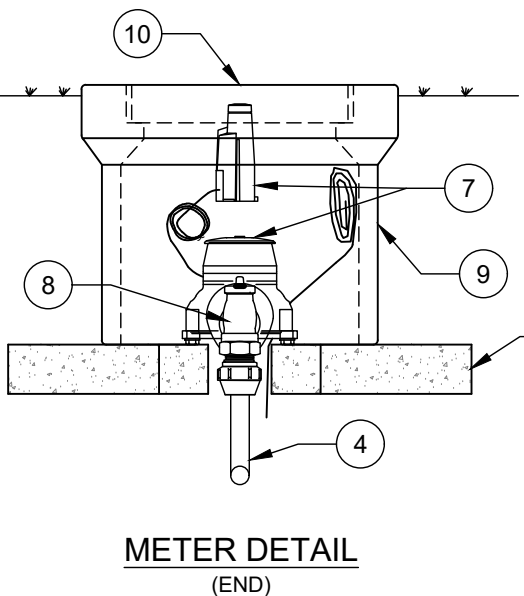
METER BOX IN SIDEWALK
(REQUIRES PRIOR CLTW APPROVAL)

NO. DESCRIPTION:

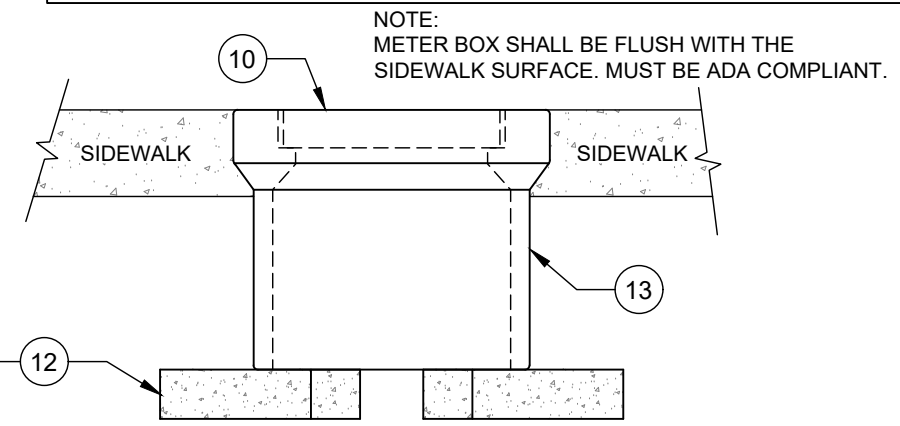
1. WATER MAIN.
2. S.S. DOUBLE STRAP SERVICE SADDLE - CC (TAPER) THREAD OUTLET.
3. BALL CORPORATION STOP WITH BRASS TEE HEAD OPERATING NUT- CC (TAPER) THREAD x CTS COMPRESSION.
4. TYPE K COPPER TUBING OR SDR9 HDPE (POLY) TUBING WITH INSERT STIFFENERS - CONTINUOUS ONE PIECE (NO FITTING ALLOWED).
5. 5/8" x 3/4" ANGLE BALL VALVE WITH LOCK WINGS - CTS COMPRESSION x YOKE STAR NUT.
6. 5/8" DUCTILE IRON YOKE BAR.
7. 5/8" METER ASSEMBLY (BY CLTW) WITH AMR TRANSMITTER.
8. CUSTOMER PROPERTY LINE 5/8" X 3/4" ANGLE BALL VALVE WITH LOCK WINGS - CTS COMPRESSION X YOKE STAR NUT.
9. GRAY HDPE PLASTIC METER BOX - SEE STD. DETAILS.
10. GRAY HDPE METER BOX LID WITH AMR TRANSMITTER - SEE STD. DETAILS.
11. AWG #12 GAUGE SOLID COPPER TRACER WIRE - WITH 30 MILS BLUE INSULATION HDPE - TERMINATE IN METER BOX WITH 24" EXCESS WIRE (COILED).
12. SOLID STANDARD CONCRETE BRICKS - DIAGONAL AT CORNERS - 4 EACH.
13. USE CONCRETE METER BOX WHEN IN SIDEWALK.



METER DETAIL
(SIDE)



METER DETAIL
(END)



METER BOX IN SIDEWALK DETAIL
(REQUIRES PRIOR CLTW APPROVAL)
(BOX SHALL BE CONCRETE BOX WITH PLASTIC LID, AND SUPPORTED BY CONCRETE SIDEWALK - AS SHOWN)

- NOTES:**
- A. MIN. DISTANCE CENTER TO CENTER ON SERVICES OR TO BELLS OR SPIGOTS SHALL BE 3' AS MEASURED ALONG THE MAIN.
 - B. CENTER ANGLE BALL VALVES AND METER (NO. 5 - NO.7) IN METER BOX.
 - C. SHOWN AS 3/4" SERVICE, USE 1" COMPONENTS FOR 1" DOMESTIC WATER SERVICE.
 - D. TRACER WIRE REQUIRED FOR ALL SERVICES REGARDLESS OF PIPE TYPE.
 - E. WHEN METER BOX MUST BE PLACED IN CONCRETE, IT SHALL BE COMPLETELY IN, AND CENTERED IN CONCRETE PANEL, PER CDOT / NCDOT REQUIREMENTS.
 - F. CLTW MAINTENANCE ENDS WITH THE CUSTOMER PROPERTY LINE ANGLE BALL VALVE (NO. 8).
 - G. METER SHALL SERVE PROPERTY IT FRONTS.
 - H. SERVICE LINE SHALL RUN PERPENDICULAR TO THE ROAD/ROW IF THE MAIN IS ON A SKEW.
 - I. METER BOX IS NOT ALLOWED IN DRIVEWAY.