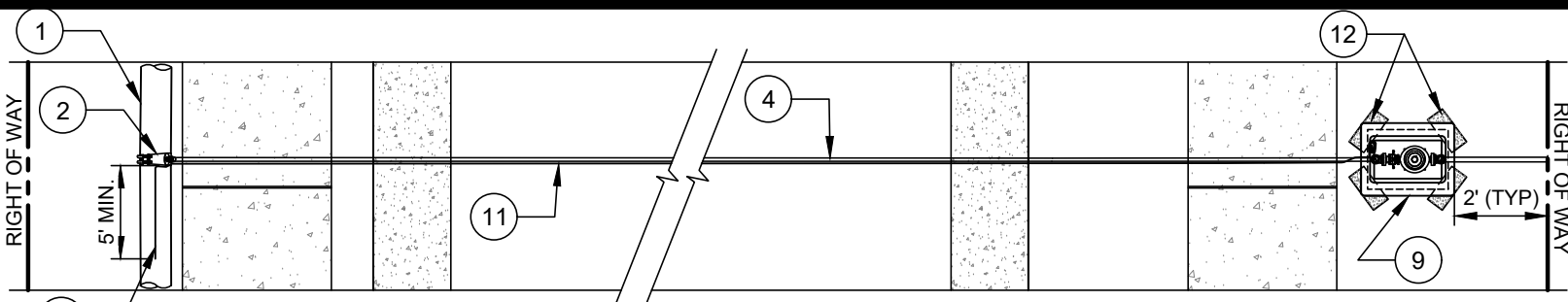
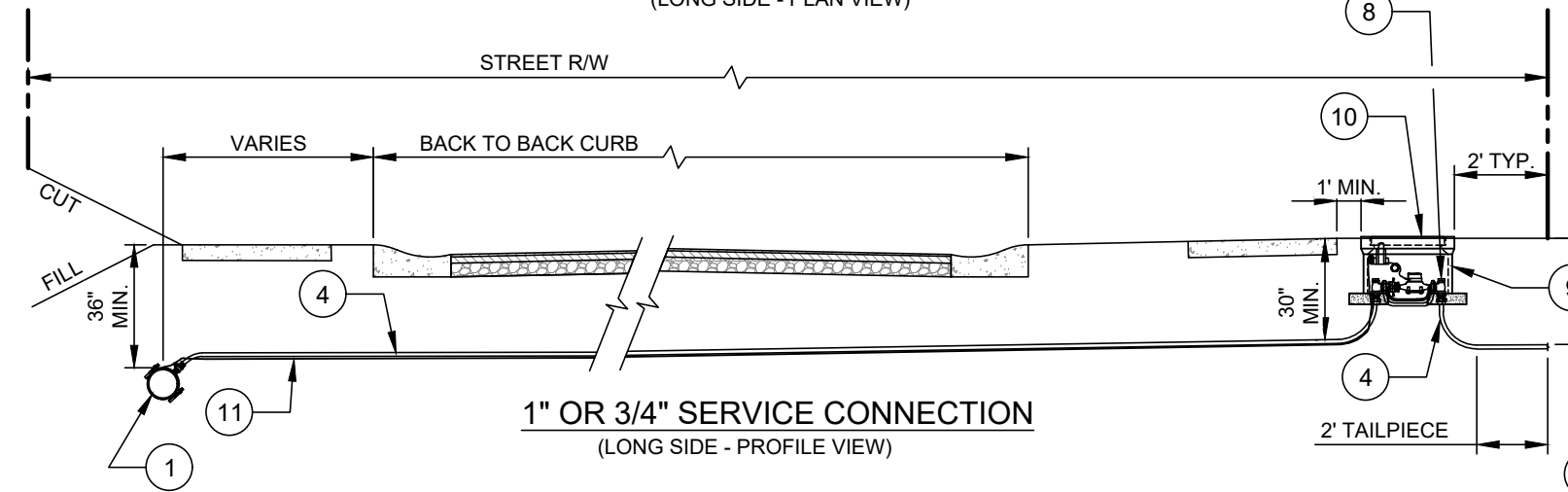


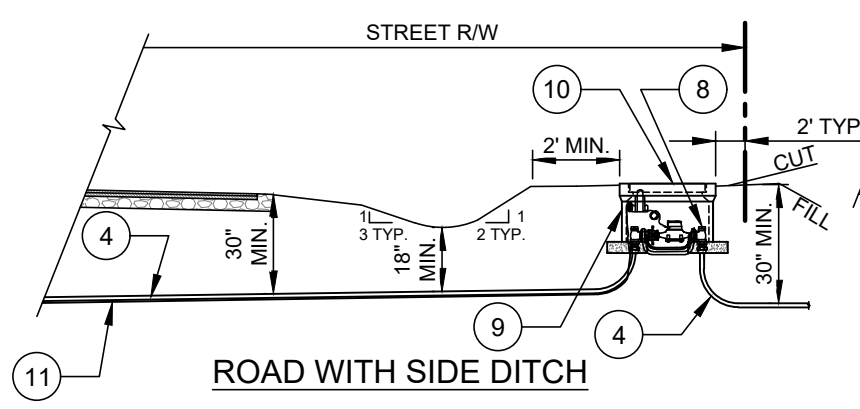
NO.	DESCRIPTION:
1.	WATER MAIN.
2.	S.S. DOUBLE STRAP SERVICE SADDLE - CC (TAPER) THREAD OUTLET.
3.	BALL CORPORATION STOP WITH BRASS TEE HEAD OPERATING NUT - CC (TAPER) THREAD X CTS COMPRESSION.
4.	TYPE K COPPER TUBING OR SDR9 HDPE (POLY) TUBING WITH INSERT STIFFENERS - CONTINUOUS ONE PIECE (NO FITTING ALLOWED).
5.	5/8" X 3/4" ANGLE BALL VALVE WITH LOCK WINGS - CTS COMPRESSION X YOKE STAR NUT.
6.	5/8" DUCTILE IRON YOKE BAR.
7.	5/8" METER ASSEMBLY (BY CLTW) WITH AMR TRANSMITTER.
8.	CUSTOMER PROPERTY LINE 5/8" X 3/4" ANGLE BALL VALVE WITH LOCK WINGS - CTS COMPRESSION X YOKE STAR NUT.
9.	GRAY HDPE PLASTIC METER BOX - SEE STD. DETAILS.
10.	GRAY HDPE METER BOX LID WITH AMR TRANSMITTER - SEE STD. DETAILS.
11.	AWG #12 GAUGE SOLID COPPER TRACER WIRE - WITH 30 MILS BLUE INSULATION HDPE - TERMINATE IN METER BOX WITH 24" EXCESS WIRE (COILED).
12.	SOLID STANDARD CONCRETE BRICKS - DIAGONAL AT CORNERS - 4 EACH.



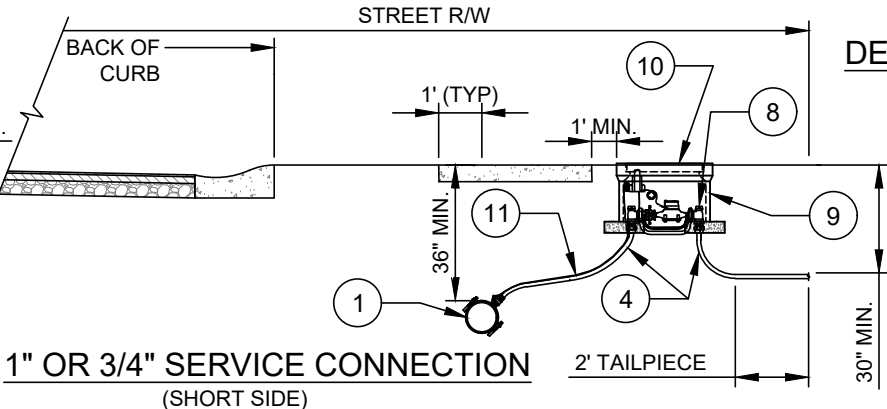
**1" OR 3/4" SERVICE CONNECTION**  
(LONG SIDE - PLAN VIEW)



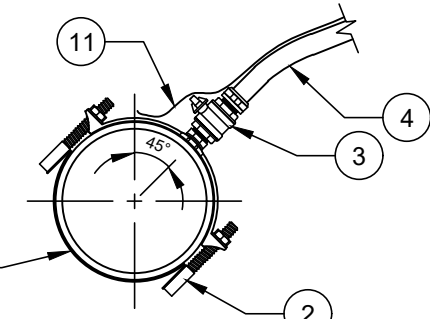
**1" OR 3/4" SERVICE CONNECTION**  
(LONG SIDE - PROFILE VIEW)



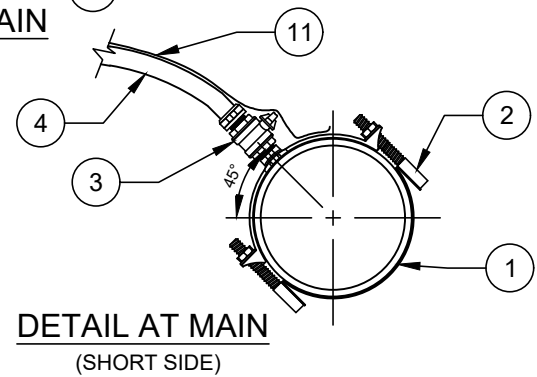
**ROAD WITH SIDE DITCH**



**1" OR 3/4" SERVICE CONNECTION**  
(SHORT SIDE)



**DETAIL AT MAIN**  
(LONG SIDE)



**DETAIL AT MAIN**  
(SHORT SIDE)

- NOTES:**
- A. MIN. DISTANCE CENTER TO CENTER ON SERVICES OR TO BELLS OR SPIGOTS SHALL BE 3' AS MEASURED ALONG THE MAIN.
  - B. CENTER ANGLE BALL VALVES AND METER (NO. 5 - NO. 7) IN METER BOX.
  - C. SHOWN AS 3/4" SERVICE, USE 1" COMPONENTS FOR 1" DOMESTIC WATER SERVICE.
  - D. TRACER WIRE REQUIRED FOR ALL SERVICES REGARDLESS OF PIPE TYPE.
  - E. WHEN METER BOX MUST BE PLACED IN CONCRETE, IT SHALL BE COMPLETELY IN, AND CENTERED IN CONCRETE PANEL, PER CDOT / NCDOT REQUIREMENTS.
  - F. CLTW MAINTENANCE ENDS WITH THE CUSTOMER PROPERTY LINE ANGLE BALL VALVE (NO. 8).
  - G. METER SHALL SERVE PROPERTY IT FRONTS.
  - H. SERVICE LINE SHALL RUN PERPENDICULAR TO THE ROAD/ROW IF THE MAIN IS ON A SKEW.