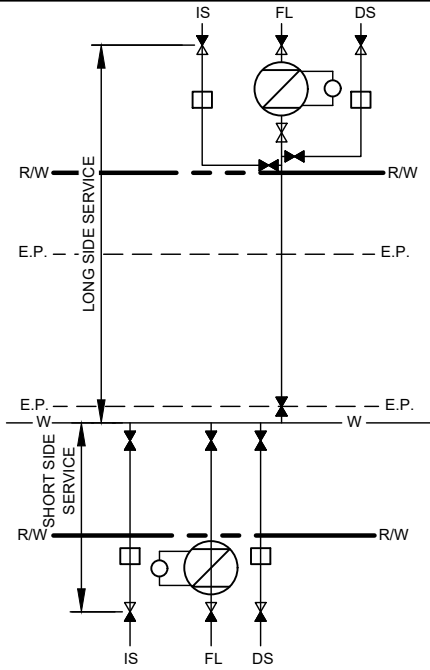
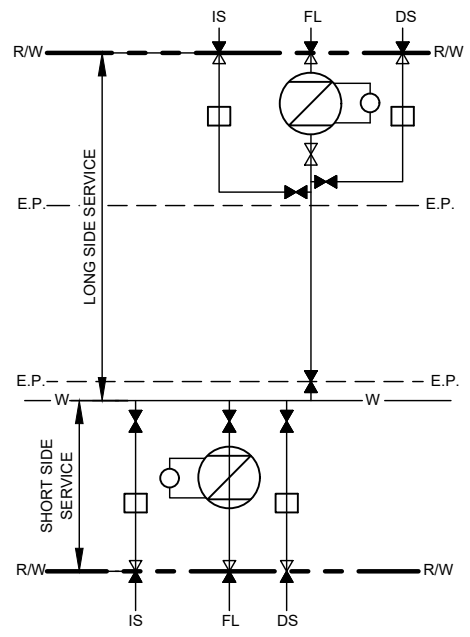


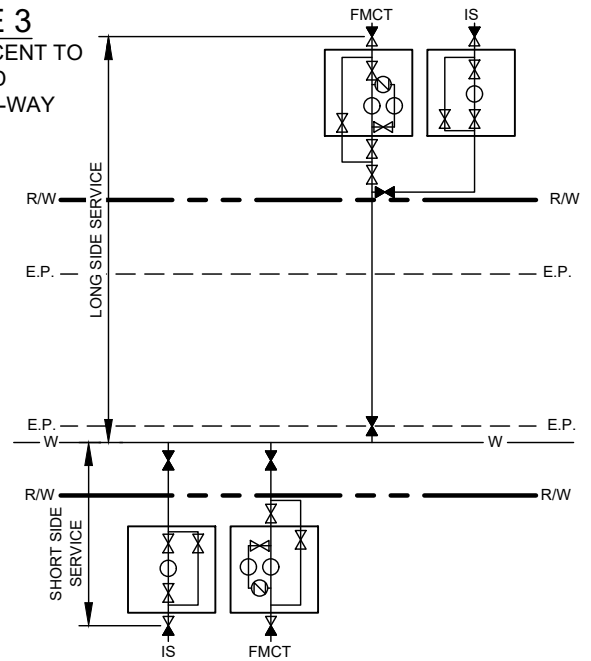
**TYPE 1**  
METERS ADJACENT TO ROAD RIGHT-OF-WAY



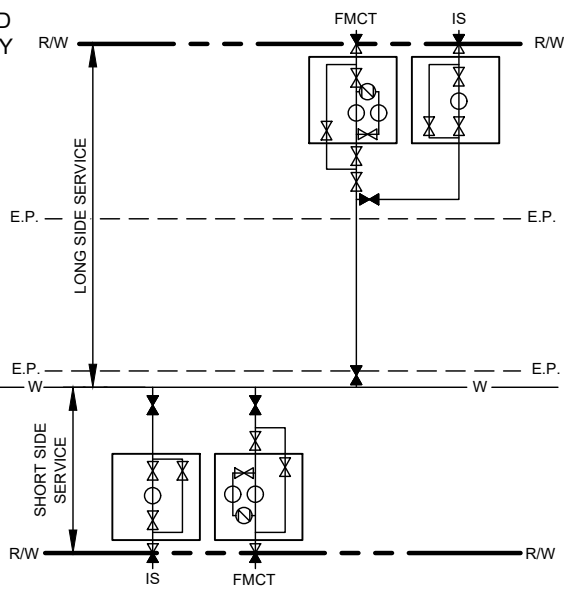
**TYPE 2**  
METERS IN ROAD RIGHT-OF-WAY



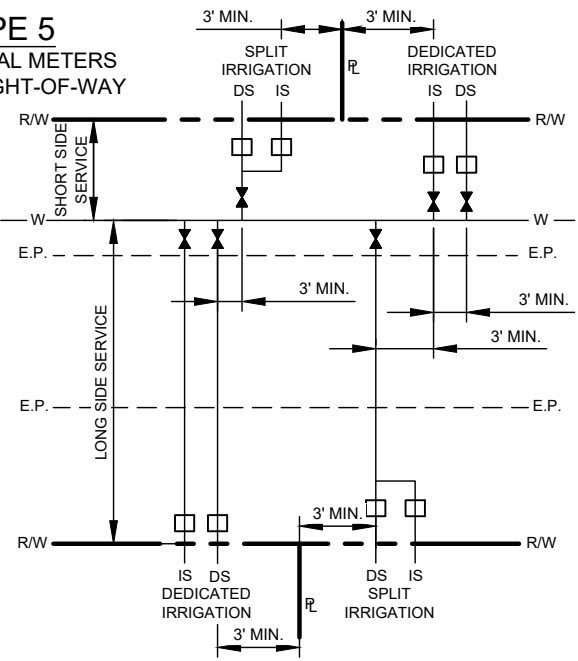
**TYPE 3**  
FMCT ADJACENT TO ROAD RIGHT-OF-WAY



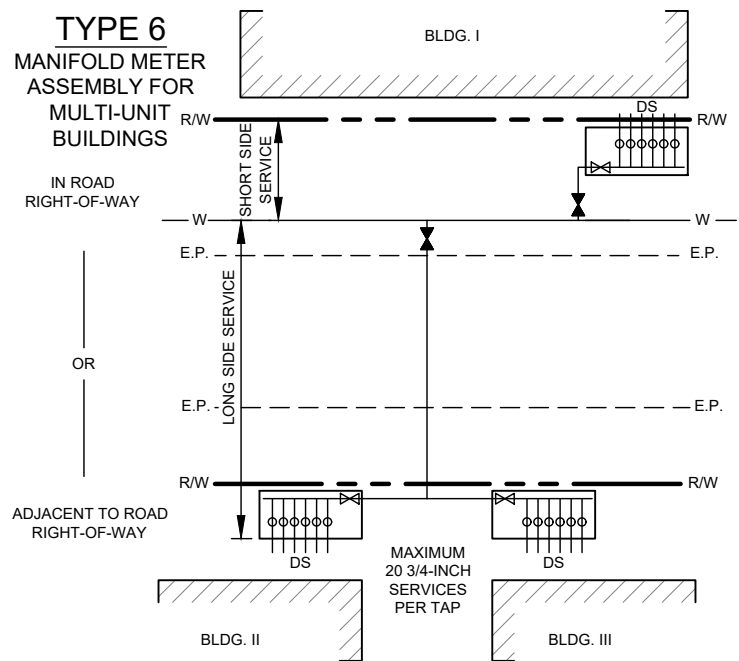
**TYPE 4**  
FMCT IN ROAD RIGHT-OF-WAY



**TYPE 5**  
RESIDENTIAL METERS IN ROAD RIGHT-OF-WAY



**TYPE 6**  
MANIFOLD METER ASSEMBLY FOR MULTI-UNIT BUILDINGS



**LEGEND / NOTE:**

- IS = LAWN IRRIGATION SERVICE
- DS = DOMESTIC POTABLE WATER SERVICE
- FL = FIRE LINE SERVICE WITH DETECTOR METER
- FMCT = FACTORY MUTUAL COMPOUND TYPE / FIRE MAIN COMPOUND TYPE OR ULTRASONIC METER TYPE.

- = FOR 3/4"-2" SERVICE - TAPPING SADDLE AND BALL CORPORATION STOP - CC (TAPER) THREAD.
- = FOR 3"-12" SERVICE - TAPPING SLEEVE AND TAPPING GATE VALVE (FL X MJ) FOR EXISTING WATER MAINS OR MJ TEE, FOSTER ADAPTOR, SERVICE GATE VALVE, (RESTRAINED) FOR NEW MAINS.
- = GATE VALVE OR BALL VALVE - SEE METER DETAILS

- = PROPERTY LINE VALVE - FOR 3/4"-1" - NOT REQUIRED, FOR 1 1/2"-2" - BALL VALVE CURB STOP, OR FOR 3"-12" - OPEN LEFT MJ GATE VALVE (RESTRAINED).
- ALL PIPE SHALL BE RESTRAINED FROM MAIN TO PROPERTY LINE VALVE - 3/4"-2" SHALL BE TYPE K COPPER OR SDR 9 HDPE (NO JOINTS PERMITTED BETWEEN WATER MAIN AND METER), 3"-12" SHALL BE RESTRAINED JOINT DUCTILE IRON. SEE INDIVIDUAL METER DETAILS FOR SPECIFIC COMPONENT REQUIREMENTS.