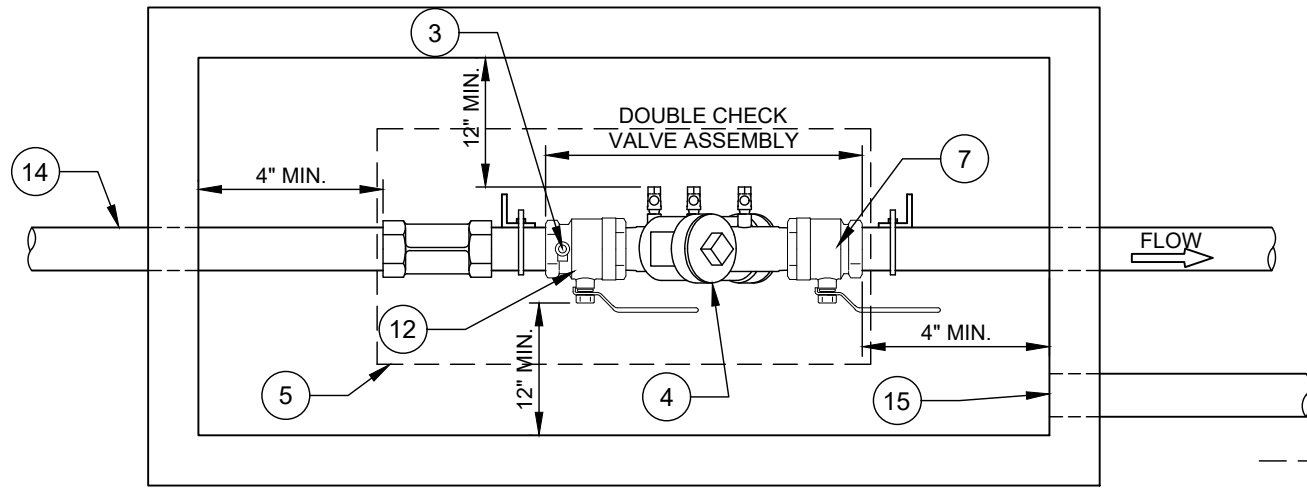
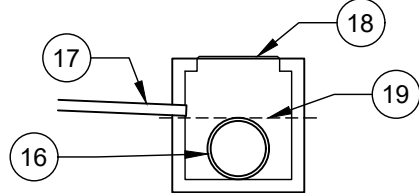


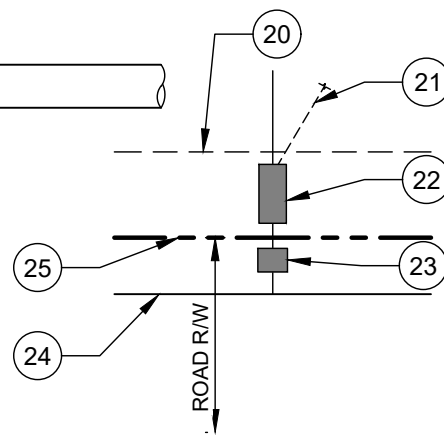
**ELEVATION VIEW**



**PLAN VIEW**



**DRAIN ALTERNATIVE:**  
TIE INTO CATCH BASIN OR STORMWATER MANHOLE PER DETAIL SHOWN ABOVE. NO TIE IN TO STORMWATER PIPE WILL BE ACCEPTED.



**TYPICAL LOCATION REQUIREMENT FOR BELOW GROUND INSTALLATION**

N.T.S.

**NO. DESCRIPTION:**

1. SLEEVE REQUIRED (TYP.).
2. STRAINER RECOMMENDED EXCEPT ON FIRE SERVICE.
3. TEST COCK #1.
4. CHECK VALVE #1.
5. VAULT LID. SEE NOTE C.
6. FINISHED GRADE TO BE SLOPED AWAY FROM COVER.
7. SHUT-OFF VALVE #2.
8. TYPE K OR L COPPER TUBING OR 1 INCH MIN. GALVANIZED STEEL PIPE (CONFORMS TO ASTM A53) FOR MIN. OF 5' ON EACH END OF THE ASSEMBLY. SEE NOTE B.
9. 2" MIN. DIAMETER DRAIN BY GRAVITY TO ATMOSPHERE AS REQUIRED BY CLTW SPECIFICATIONS. SEE NOTE D.
10. SEE NOTE C.
11. CHECK VALVE #2.
12. SHUT-OFF VALVE #1.
13. SUPPORT AS REQUIRED BY DESIGNER.
14. SEE NOTE F.
15. 2" MIN. DRAIN TO ATMOSPHERE.
16. STORM PIPE.
17. DRAIN FROM BACKFLOW VAULT.
18. CATCH BASIN WITH GRATE.
19. TOP OF DISCHARGING STORM PIPE.
20. ZONING SETBACK.
21. DRAIN.
22. CLTW REQUIRED BPA BELOW GROUND. SEE NOTE E AND F.
23. CLTW METER.
24. PUBLIC WATER MAIN.
25. PROPERTY LINE OR R/W.

**NOTES:**

- A. BACKFLOW PREVENTION ASSEMBLIES (BPA's) SHALL CONFORM TO CLTW SPECIFICATIONS. SHUT-OFF VALVES ARE SPECIFIC TO EACH APPROVED BPA AND NO SUBSTITUTIONS OF SHUT-OFF VALVES ARE PERMITTED. REFER TO CLTW APPROVED LIST OF BPA's.
- B. PIPE MATERIAL AND FITTINGS SHALL BE AS SPECIFIED IN CLTW STANDARDS & SPECIFICATIONS.
- C. VAULT, DOORS, OR COVERS AND SUPPORT OF ASSEMBLY SHALL BE DESIGNED BY DESIGNER AND AS REQUIRED.
- D. DRAIN INLET MAY BE PROVIDED AS SHOWN OR AS FLOOR DRAIN.
- E. ALL LOCATIONS FOR BPA's REQUIRE CLTW APPROVAL.
- F. THERE SHALL BE NO TAPS, PIPING BRANCHES, UNAPPROVED BYPASS PIPING, HYDRANTS, FIRE DEPT. CONNECTION POINTS, OR OTHER WATER - USING APPURTENANCES CONNECTED TO THE SUPPLY LINE BETWEEN ANY WATER METER AND ITS CLTW - REQUIRED BACKFLOW PREVENTER.
- G. EACH CLTW-REQUIRED BPA IS REQUIRED TO BE TESTED BY A CLTW - APPROVED CERTIFIED TESTER PRIOR TO PLACING THE WATER SYSTEM IN SERVICE. TEST RESULTS SHALL BE SUBMITTED TO CLTW WITHIN 30 DAYS AND TESTED ANNUALLY THEREAFTER SUBMITTING RESULTS TO CLTW.
- H. INSTALLATIONS INTENDED FOR ADDRESSING CLTW REQUIREMENTS, REQUIRE PRIOR APPROVAL FROM THE APPROPRIATE CLTW BACKFLOW INSPECTOR.