

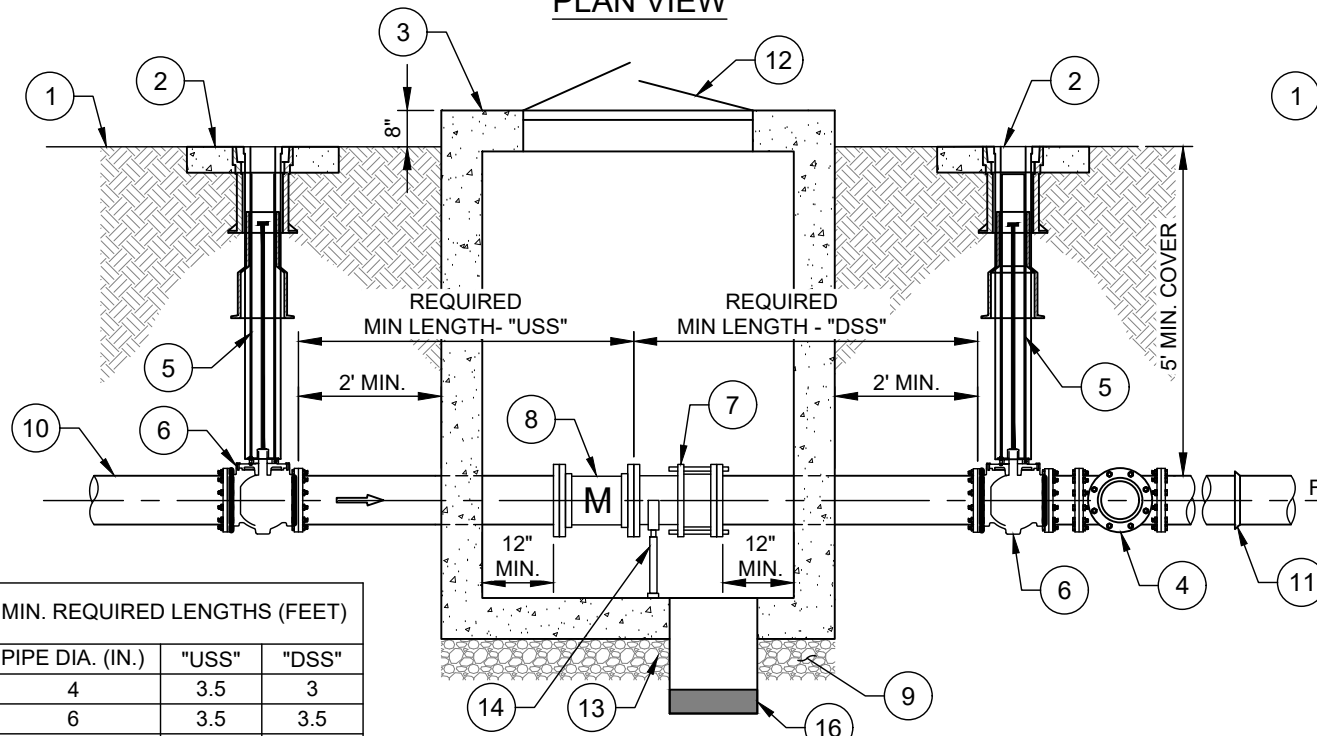
PLAN VIEW

| MIN. VAULT DIMENSIONS (FEET) | | |
|------------------------------|-----|-----|
| PIPE DIA. (IN.) | "L" | "W" |
| 4 | 4.0 | 4.0 |
| 6 | 4.0 | 4.0 |
| 8 | 4.0 | 4.0 |
| 10 | 5.0 | 5.0 |
| 12 | 5.0 | 5.0 |
| 16 | 5.0 | 5.0 |
| 18 | 5.0 | 5.0 |
| 20 | 5.0 | 6.0 |
| 24 | 6.0 | 6.0 |
| 30 | 6.0 | 6.0 |
| 36 | 7.0 | 7.0 |

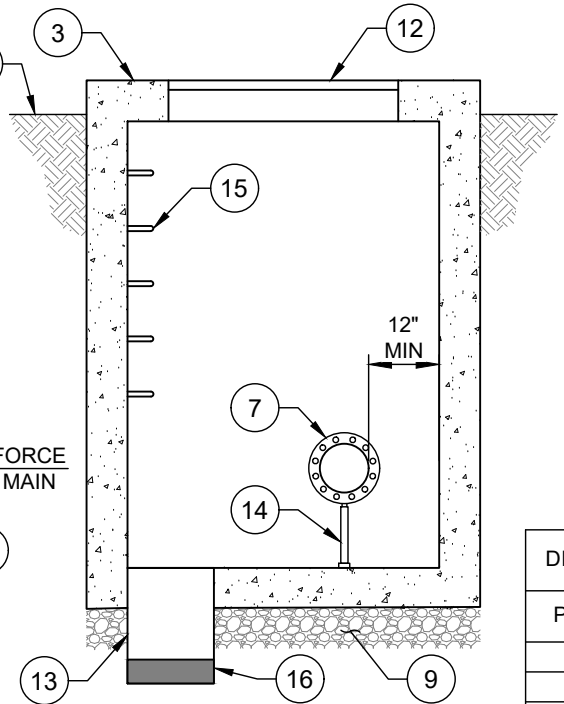
| ACCESS HATCH DIMENSIONS (FEET) | |
|--------------------------------|-----|
| PIPE DIA. (IN.) | LxW |
| 4 | 4X4 |
| 6 | 4X4 |
| 8 | 4X4 |
| 10 | 5X5 |
| 12 | 5X5 |
| 16 | 5X5 |
| 18 | 5X5 |
| 20 | 5X5 |
| 24 | 5X5 |
| 30 | 5X5 |
| 36 | 5X5 |

- NO. DESCRIPTION:
- FINISHED GRADE.
 - 24" X 24" X 4" CONCRETE PAD.
 - CONCRETE VAULT.
 - RMJ TEE FOR BYPASS PIPING.
 - CLTW VALVE BOX (TYP. PER CLTW STD. DETAIL) TO BE LOCATED OUTSIDE OF MAGMETER VAULT AND FLUSH WITH EXISTING GRADE. VALVE STEM WITHIN 12" OF SURFACE.
 - RMJ PLUG VALVE.
 - FL X FL W/ SS HARDWARE DISMANTLING JOINT = SMITH BLAIR #975 OR ROMAC #DJ400.
 - FL X FL ELECTROMAGNETIC FLOW METER (MAGMETER). ROSEMONT #8750W, ABB #FEW325 OR SIEMENS #7ME6310.
 - 6" #57 WASHED STONE.
 - PROTECTO 401 LINED DI PIPE AND FITTINGS.
 - MAY TRANSITION DIP TO PVC OUTSIDE THE FENCE AREA, IF APPROPRIATE.
 - ALUMINUM ACCESS HATCH.
 - 18" DIAMETER SUMP - PVC OR DIP PIPE, GROUTED INTO BASE FLOOR.
 - S.S. PIPE JACK WITH SADDLE.
 - PROVIDE ALUMINUM LADDER.
 - 6" THICK REINFORCED CONCRETE PLUG.

- NOTES:
- THIS DETAIL IS A SAMPLE LAYOUT AS MAGMETER DESIGN, SIZING, AND THE BYPASS CONNECTION LOCATION ARE PROJECT DEPENDENT.
 - ALL VALVES OPEN LEFT.



PROFILE VIEW



SECTION VIEW

| MIN. REQUIRED LENGTHS (FEET) | | |
|------------------------------|-------|-------|
| PIPE DIA. (IN.) | "USS" | "DSS" |
| 4 | 3.5 | 3 |
| 6 | 3.5 | 3.5 |
| 8 | 3.5 | 3.5 |
| 10 | 4.3 | 3.5 |
| 12 | 5.0 | 3.5 |
| 16 | 6.8 | 4.0 |
| 18 | 7.5 | 4.5 |
| 20 | 8.5 | 5.0 |
| 24 | 10.0 | 6.0 |
| 30 | 12.5 | 7.5 |
| 36 | 15.0 | 9.0 |

| DISMANTLING JOINT REQUIRED LAY LENGTH (INCHES) | | |
|------------------------------------------------|------------------|--------------|
| PIPE DIA. (IN.) | SMITH BLAIR #975 | ROMAC #DJ400 |
| 4 | 9 | 8.00 |
| 6 | 9 | 8.38 |
| 8 | 9 | 8.38 |
| 10 | 10 | 10.50 |
| 12 | 10 | 10.50 |
| 16 | 12 | 13.50 |
| 18 | 12 | 13.75 |
| 20 | 12 | 13.75 |
| 24 | 12 | 14.25 |
| 30 | 12 | 14.75 |
| 36 | 12 | 15.75 |