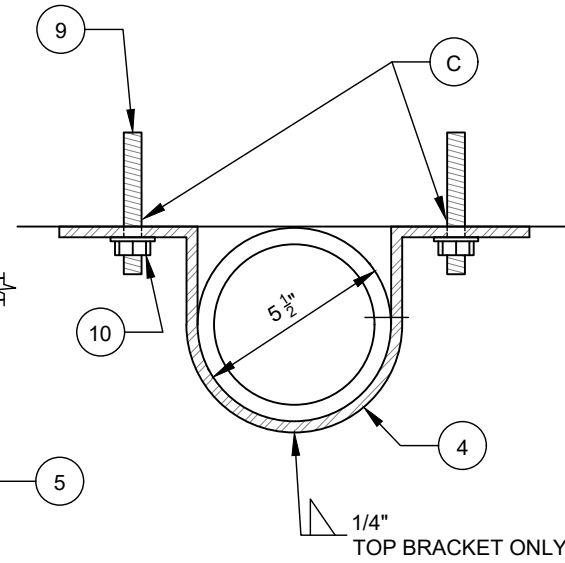
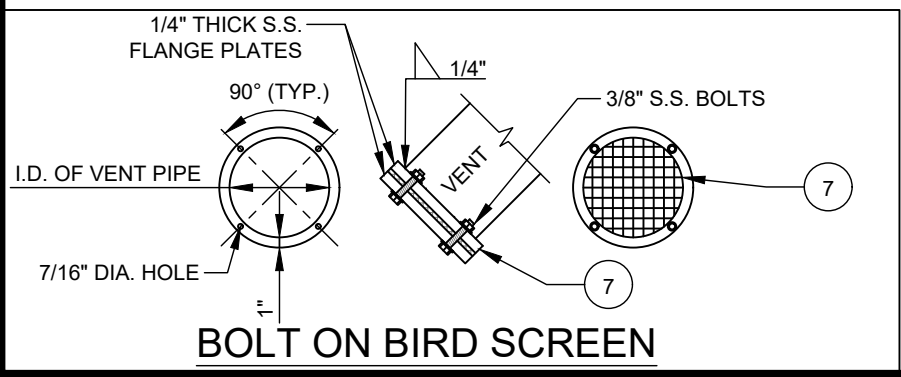


PIPE BRACKET



SECTION A-A



BOLT ON BIRD SCREEN

- NO. DESCRIPTION:**
1. 5" DIAMETER STEEL PIPE.
 2. SEE BOLT ON BIRD SCREEN DETAIL THIS SHEET.
 3. 24" CAST IRON MANHOLE FRAME AND COVER (EQUIPMENT ACCESS) PER CLTW STANDARDS - TYPE C / 1 CENTER OVER AIR / VACUUM VALVE.
 4. PIPE BRACKET FABRICATED FROM 1/4" STEEL PLATE (SEE THIS SHEET).
 5. PRECAST CONCRETE OR POLYMER CONCRETE VAULT. SEE COMBINATION AIR AND VACUUM VALVE FOR SEWER FORCE MAINS DETAIL.
 6. 1/4" STEEL PLUG.
 7. TYPE 316 STAINLESS STEEL MESH BIRD SCREEN BOLTED BETWEEN TWO STAINLESS STEEL PLATES AND WELDED TO VENT PIPE AS SHOWN. USE ALL TYPE 316 STAINLESS STEEL BOLTS, NUTS AND WASHERS. SCREEN SHALL BE CONSTRUCTED OF 1/4" STAINLESS STEEL MESH BIRD SCREEN (WIRE DIAMETER 0.047").
 8. 11/16" DIAMETER HOLES DRILLED AS SHOWN.
 9. 5/8" x 4" TYPE 304 S.S. ALL THREAD ROD.
 10. TYPE 316 STAINLESS STEEL NUT AND WASHER WITH ANTI-SEIZE COMPOUND.
 11. 1/4" STEEL SPACER PLATE.
 12. 1/4" WASHER STEEL PLATES TO PLUMB VENT.
 13. BREAK-OFF FLANGE WITH BREAK AWAY FLANGE BOLTS.

- NOTES:**
- A. 2' ABOVE 100 YEAR FLOOD ELEV. OR 6' ABOVE FRAME (WHICHEVER IS GREATER).
 - B. 1'-3" (MAX SPACING). AVOID PLACING PIPE BRACKET AT VAULT JOINTS OR STEPS. MINIMUM OF 3 PIPE BRACKETS REQUIRED PER VENT PIPE.
 - C. USE EPOXY ADHESIVE, IN CLEANED DRILLED HOLE.
 - D. VENT AND BRACKETS SHALL BE PAINTED PER SPECS. VENT SHALL HAVE FACTORY APPLIED INTERIOR LINING.
 - E. ALL THREAD ROD, WASHER, AND NUT SHALL BE STAINLESS STEEL.