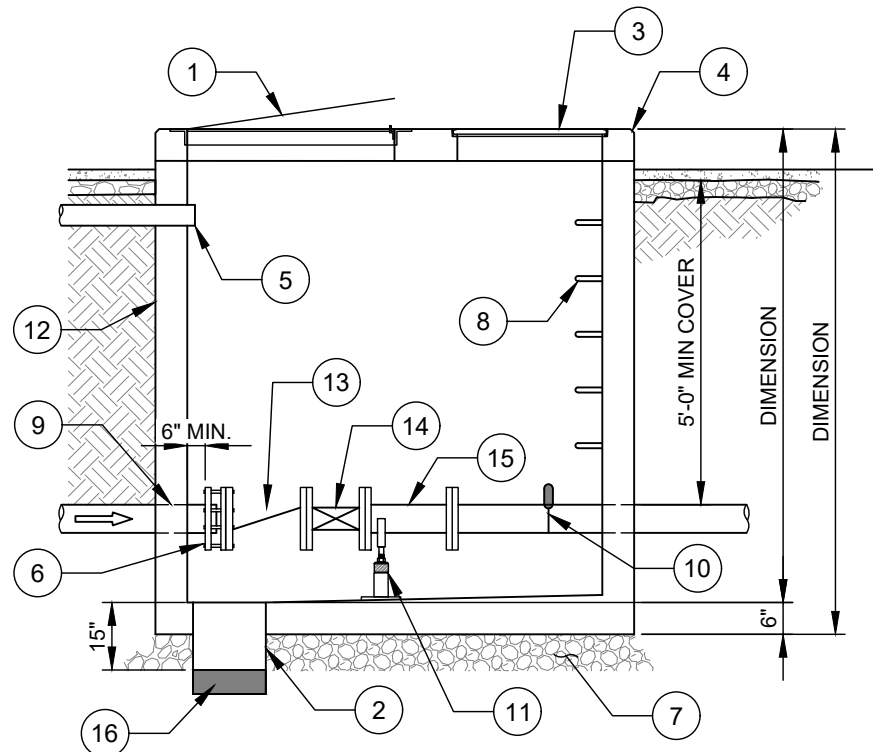
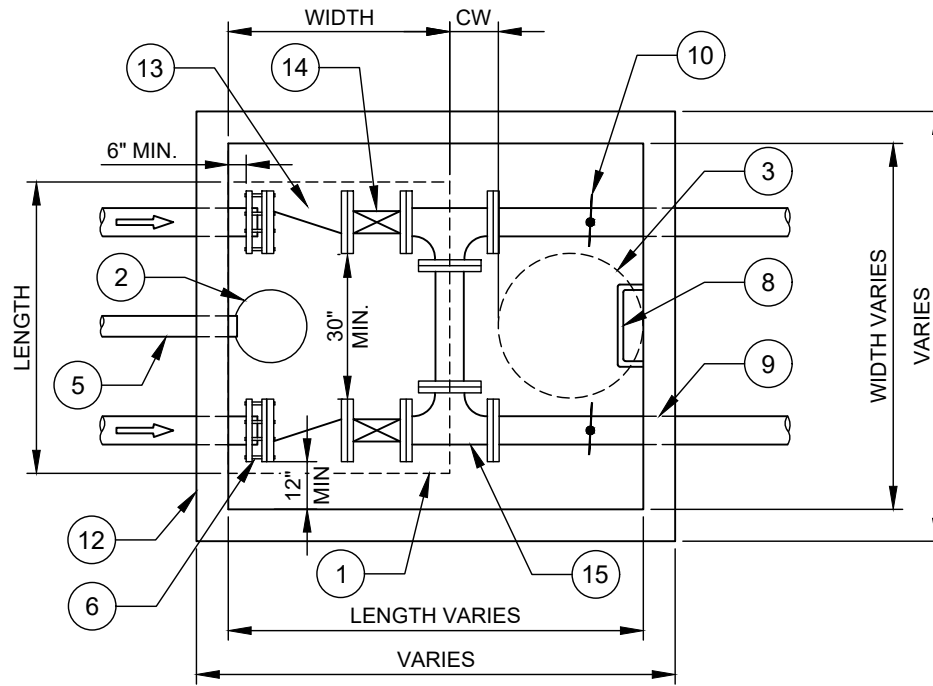


MIN VAULT DIMENSIONS (FEET)		
PIPE DIA. (IN.)	"L"	"W"
4	6.0	6.0
6	7.0	7.0
8	7.5	7.0
10	8.5	7.0
12	9.0	8.0
16	10.0	9.0
18	10.5	9.0
20	11.0	9.0
24	12.5	10.0
30	14.0	11.0
36	15.5	12.0

CW - MIN CONCRETE WIDTH (FEET)	
PIPE DIA. (IN.)	W
4	0.5
6	1
8	1
10	1
12	1.5
16	2
18	2
20	2.5
24	3
30	3.5
36	4



ACCESS HATCH DIMENSIONS (FEET)	
PIPE DIA. (IN.)	L X W
4	4X3
6	4.5 X 3.5
8	5X4
10	5.5X5
12	6X5
16	6.5X5.5
18	7X6
20	7.5X6
24	8X7
30	9X8
36	10X9

- NO. DESCRIPTION:**
- ALUMINUM ACCESS HATCH - SINGLE OR DOUBLE LEAF, DEPENDING ON SIZE. LOCK PIN FOR PADLOCK.
  - 18 INCH DIA SUMP - PVC OR DIP PIPE, GROUTED INTO BASE FLOOR.
  - 30" DIA CLEAR OPENING FIBERGLASS COMPOSITE COVER AND TYPE E CAST IRON FRAME.
  - 1 INCH CHAMFER (TYP).
  - SCHEDULE 40 2" STAINLESS STEEL PIPE BETWEEN WET WELL AND VALVE VAULT. PIPE IS TO BE LEVEL AND STUBBED OUT 2" ON EACH END WITH EXPANSION PLUG ONLY ON VALVE VAULT SIDE.
  - MEGA FLANGE OR APPROVED EQUAL.
  - MINIMUM 6" LEVEL COMPACTED STONE (#57).
  - PROVIDE ALUMINUM LADDER.
  - RUBBER BOOT (TYP) ALL PIPE PENETRATIONS.
  - 1 INCH CORPORATION STOP WITH S.S. TAPPING SLEEVE.
  - ADJUSTABLE S.S. ALUMINUM PIPE CRADLE W/ SS STANDPIPE 2" UNDER.
  - PRECAST CONCRETE VAULT.
  - SWING CHECK VALVE WITH EXTERNAL LEVEL AND WEIGHT FOR SEWAGE SERVICE TAP C/V LIDS 1/4" NPT WITH 1/4" BALL VALVE.
  - FL X FL PLUG VALVE.
  - FL X FL TEE.
  - 6" THICK WIRE MESH REINFORCED CONCRETE PLUG AS FLOOR OF SUMP.