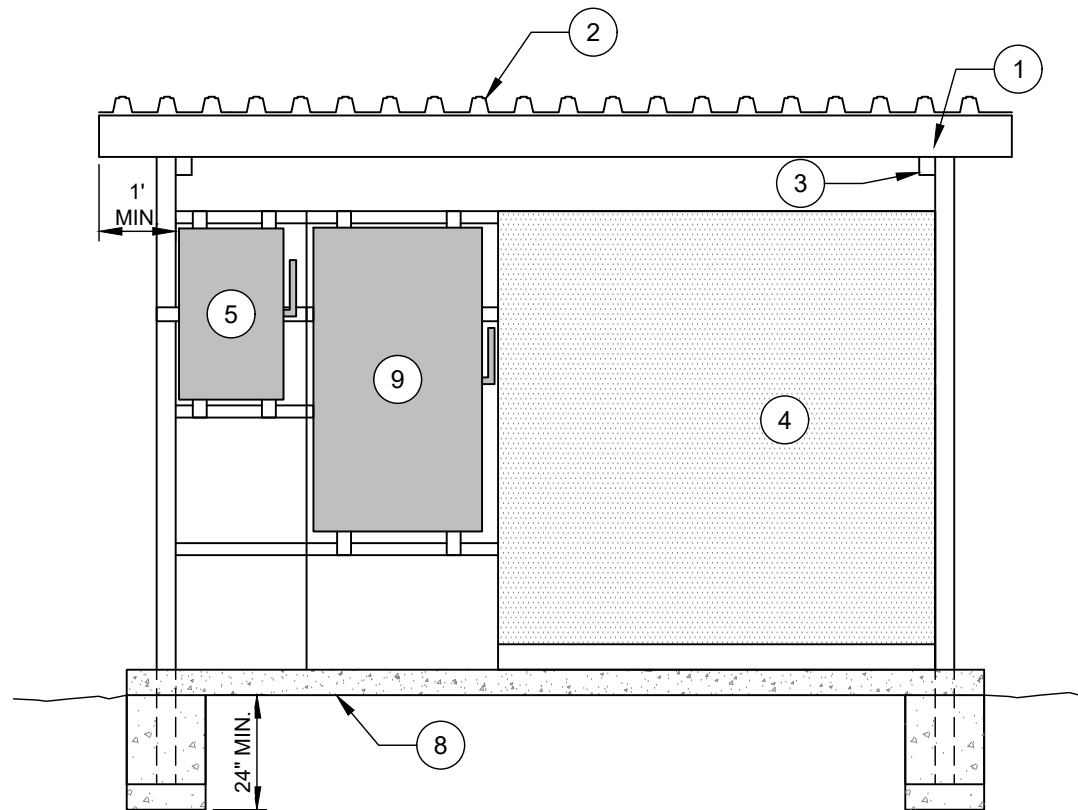


SIDE VIEW



FRONT VIEW

NO. DESCRIPTION:

1. GUTTER.
2. ROOF PANEL.
3. CHANNEL BEAM.
4. PUMP CONTROL PANEL.
5. MAIN DISCONNECT SWITCH.
6. 3" SQUARE STEEL POST 14 GA. POWDER COAT FINISH. COLOR SHALL BE GRAY, GALVINIZED, OR WHITE.
7. CONCRETE FOOTING.
8. CONCRETE PAD.
9. AUTOMATIC TRANSFER SWITCH.

NOTES:

- A. STRUCTURE AND FOOTING SHALL BE DESIGNED TO WITHSTAND 100 MPH WIND LOAD.
- B. ROOF PANEL, CHANNEL BEAM AND GUTTERS SHALL BE ALUMINIUM.