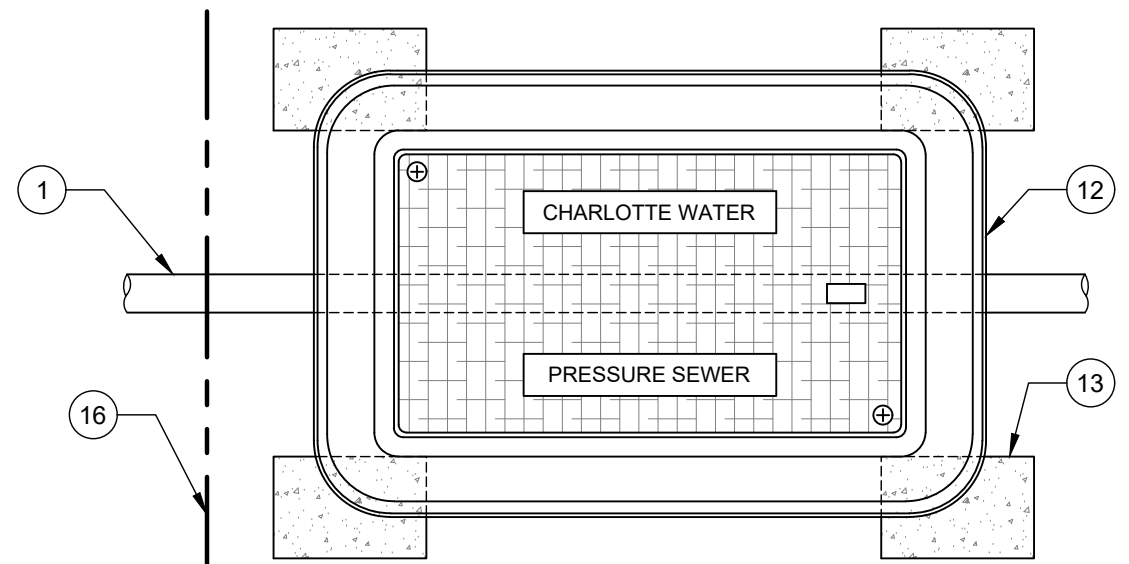


NO. DESCRIPTION:

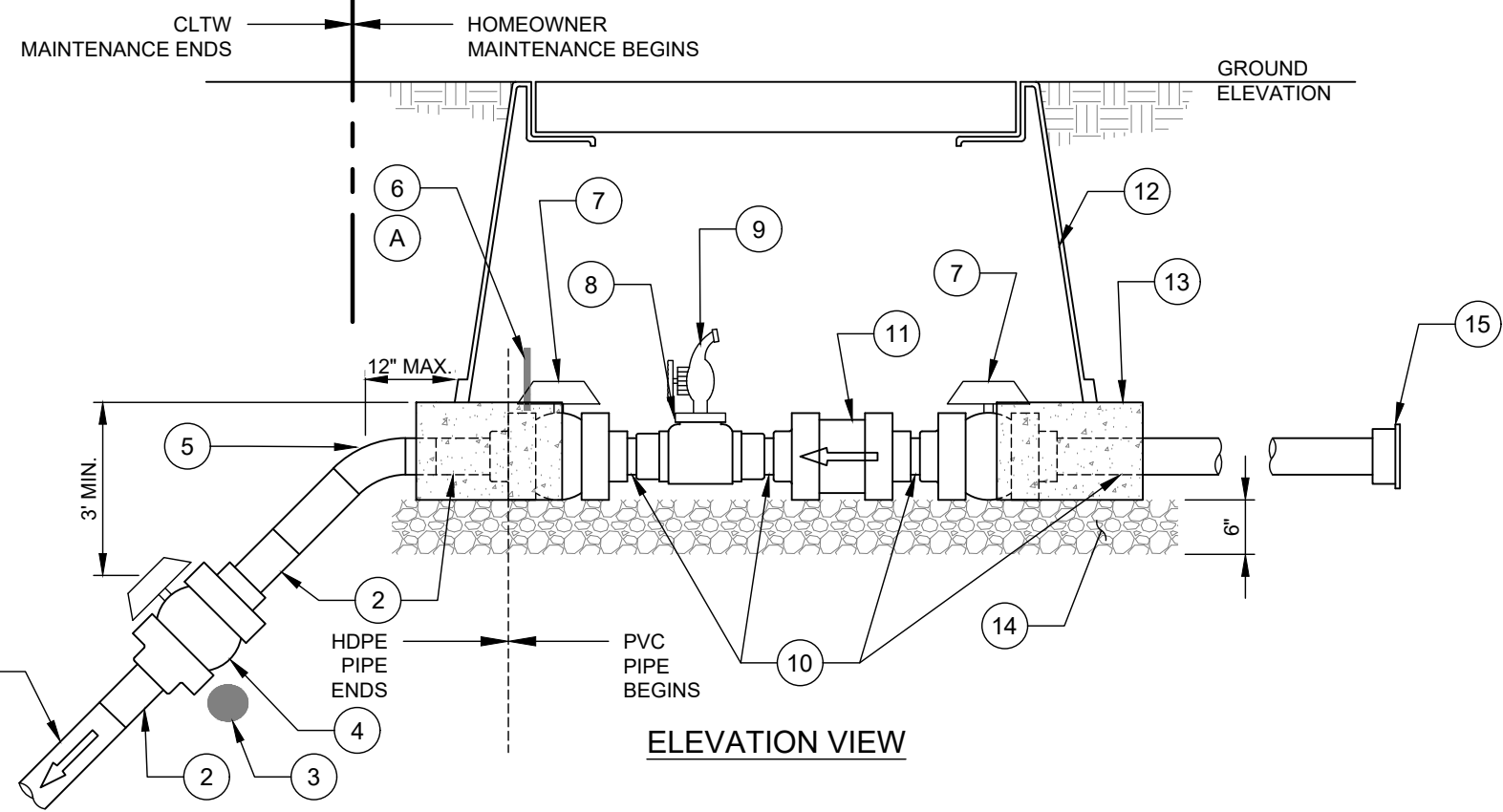
1. 1.5" SERVICE PIPE - SDR 9 HDPE PIPE.
2. 1.5" SDR 9 HDPE ADAPTOR WITH S.S. THREAD END.
3. PVC ENCAPSULATED MAGNET.
4. 1 1/2" TRUE UNION PVC BALL VALVE WITH THREADED ENDS.
5. 1.5" SDR 9 HDPE 45° BEND.
6. BARREL LOCK WITH RED CAP AND LOCKOUT TAG (FURNISHED BY CLTW) - LOCK BALL VALVE CLOSED.
7. 1.5" TRUE UNION PVC BALL VALVE WITH THREADED BY SOLVENT WELD ENDS.
8. 1 1/2" THREADED OUTLET PVC TEE W/1 1/2" X 3/4" THREADED REDUCING BUSHING (SCH 80 PVC).
9. 3/4" BALL VALVE HOSE BIB (BRASS).
10. 1.5" SCH 80 PVC PIPE.
11. 1 1/2" TRUE UNION PVC BALL CHECK VALVE.
12. SERVICE BOX.
13. NCDOT SOLID CONCRETE CAPBLOCK (4" X 4" X 8").
14. 6" #57 STONE BASE.
15. SCH 80 PVC BUSHING TO REDUCE SERVICE SIZE AND CAP.
16. PROPERTY LINE, ROAD R/W OR CLTW EASEMENT LINE.

NOTES:

- A. BARREL LOCK AND LOCKOUT TAG TO BE INSTALLED AFTER PRESSURE TEST, AND WILL BE REMOVED AFTER CLTW INSPECTION OF PRIVATE LOW PRESSURE PUMP STATION - (CERTIFICATE OF OCCUPANCY HOLD WILL ALSO BE REMOVED).
- B. SERVICE BOX SHALL NOT BE IN SIDEWALKS OR DRIVEWAYS.
- C. TOP OF BOX SHALL BE FLUSH WITH FINISHED GRADE OF LOT.
- D. ALL HDPE PIPE AND FITTING JOINTS SHALL BE FUSED (SOCKET, BUTT OR ELECTROFUSED).
- E. USE OF MECHANICAL COUPLINGS IN THE HDPE PIPE SYSTEM ARE NOT PERMITTED WITHOUT SPECIFIC APPROVAL OF THE ENGINEER.



PLAN VIEW



ELEVATION VIEW