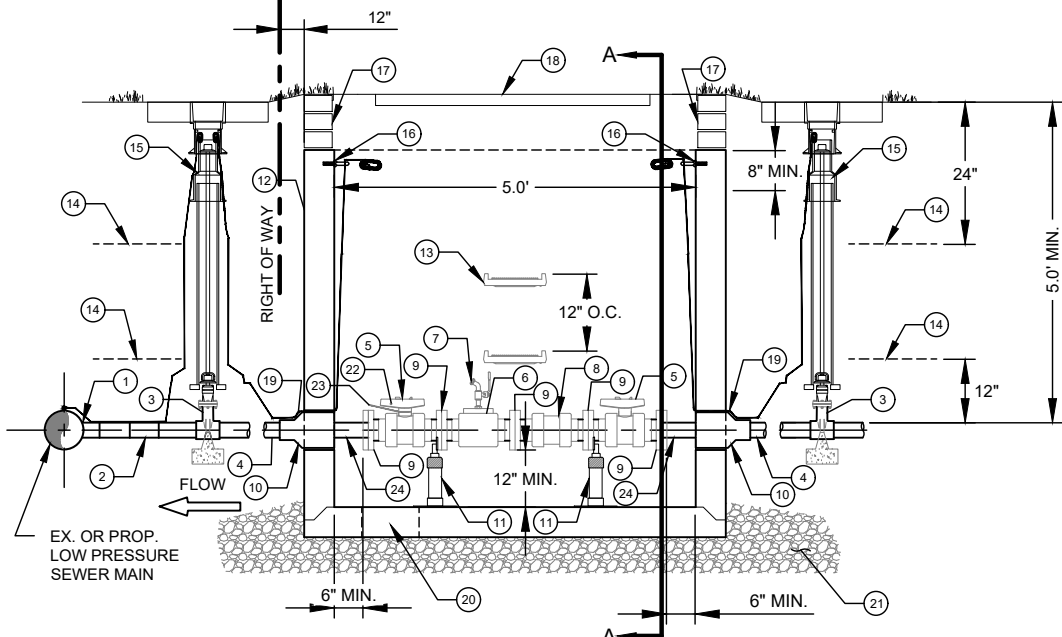
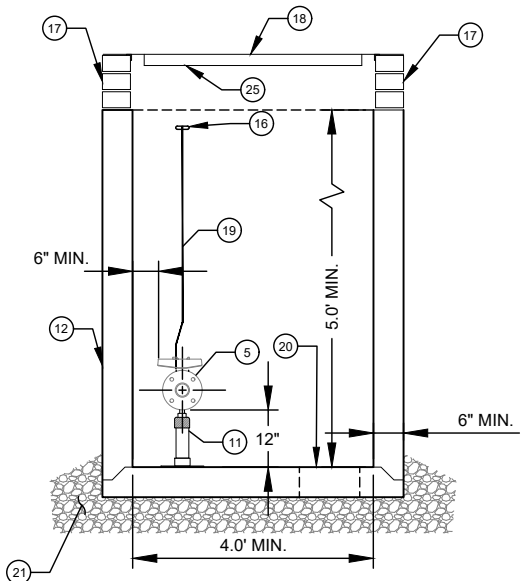


PLAN VIEW



SIDE VIEW



SECTION A-A VIEW

P-#####
XXXXXXXXXXXXX AVE
APT/UNIT XX

- NO. DESCRIPTION:**
1. 2" OUTLET SDR9 HDPE WYE, WITH CONCRETE THRUST BLOCKING.
 2. 2" SDR9 HDPE 45° BEND, WITH CONCRETE THRUST BLOCKING.
 3. 2" DI PLUG VALVE, FNPT, EXTENSION STEM, 2" OPERATING NUT, AND CONCRETE THRUST BLOCKING/SUPPORT.
 4. 2" SDR9 HDPE PIPE - BUTT FUSED.
 5. 2" PVC HAYWARD TRUE UNION BALL VALVE WITH FLANGE ENDS, LOCKOUT HANDLE.
 6. 2" X 2" X 2" SCH 80 PVC FLANGE TEE WITH 2" SOLVENT WELD OUTLET, 2" X 3/4" PVC REDUCING BUSHING, WITH FNPT OUTLET.
 7. 3/4" BRASS BALL VALVE HOSE BIB, MNPT.
 8. 2" PVC HAYWARD TRUE UNION BALL CHECK VALVE WITH FLANGE ENDS.
 9. 2" SCH 80 PVC FLANGE SOLVENT WELD ADAPTORS, IF FLANGED MAJOR COMPONENTS ARE NOT AVAILABLE.
 10. RUBBER PIPE CONNECTOR BOOT (DO NOT GROUT AROUND PIPE).
 11. S.S. ADJUSTABLE FLANGE PIPE SUPPORTS WITH S.S. EPOXY ADHESIVE ANCHORS (REQ'D - 2 EACH).
 12. PRECAST CONCRETE VAULT - MIN L.W.D = 5' X 4' X 5'.
 13. PLASTIC STEP - 12" O.C. VERTICAL SPACING.
 14. 6" WIDE "PRESSURE SEWER" WARNING TAPE.
 15. STD SEWER VALVE BOX ASSEMBLY WITH CONCRETE PAD.
 16. 3/8" S.S. EYE BOLT (TYP).
 17. MIN 3 COURSES CAP BLOCK WITH 3/8" MORTAR JOINTS, OR PRECAST RISER SECTION, MAX 2.5'.
 18. 4' X 5' STEEL METER VAULT FRAME AND COVER, 1000 PSF MIN LOAD RATING, COVER SHALL BE "CLT WATER - L. P. SEWER", ERT HANGERS AND SLOTS NOT REQUIRED.
 19. SOLID COPPER AWG #12 GAUGE TRACER WIRE WITH 30 MILS GREEN HDPE INSULATION, TERMINATE WITH 24" AT EYE BOLT.
 20. 12" DIAMETER SUMP HOLE.
 21. 12" COMPACTED #57 WASHED STONE.
 22. BARREL LOCK - FURNISHED BY CLTW.
 23. PUMP STATION INSPECTION LOCKOUT WARNING TAG - FURNISHED BY CLTW.
 24. SDR9 HDPE FLANGE ADAPTOR.
 25. ATTACH GREEN ENGRAVED LABEL, WITH PREMISE NUMBER, AND ADDRESS TO UNDERSIDE OF DOOR, NEAR THE LIFTING HANDLE.

- NOTES:**
- A. VAULT SHALL NOT BE LOCATED IN PAVEMENT, SIDEWALKS OR DRIVEWAYS.
 - B. VAULT SHALL BE 5' LONG, 4' WIDE, 5' DEEP MINIMUM.
 - C. ALL FLANGE HARDWARE SHALL BE 316 OR 304 STAINLESS STEEL WITH ANTI-SEIZE COMPOUND, FLAT WASHER REQUIRED BETWEEN BOLT HEAD AND FLANGE, FLAT WASHER AND LOCK WASHER REQUIRED BETWEEN NUT AND FLANGE. TORQUE TO 20-25 FT. LBS.
 - D. ALL PIPE AND FITTINGS SHALL BE SDR 9 HDPE, EXCEPT AS INDICATED INSIDE THE VAULT.
 - E. ASSEMBLY CONFIGURATION AND LENGTH MAY VARY DUE TO BRAND - VERIFY LENGTH TO DETERMINE MINIMUM VAULT LENGTH.
 - F. ALL CONCRETE SHALL BE MINIMUM 4000 PSI COMPRESSIVE STRENGTH.
 - G. DESIGN SHALL CONFORM TO ASTM C858 - SPECIFICATIONS FOR "UNDERGROUND PRECAST CONCRETE UTILITY STRUCTURE".
 - H. STEEL REINFORCING DESIGN SHALL CONFORM TO ASTM C857.
 - I. REBARS SHALL BE GRADE 60 PER ASTM A615.
 - J. WELDED WIRE FABRIC SHALL CONFORM TO ASTM A185.
 - K. DIAGONAL REINFORCING SHALL BE ADDED AT ALL OPENINGS.
 - L. PIPE PENETRATION SHALL BE SEALED WITH FLEXIBLE CONNECTORS (MANHOLE BOOTS).
 - M. FRAME TO BE FLUSH WITH GROUND OR CONCRETE SIDEWALK, GROUND SHALL SLOPE AWAY FROM VAULT.
 - N. ALL JOINTS SHALL BE MADE WATERTIGHT USING 2 RINGS OF BUTYL RUBBER JOINT MASTIC.
 - O. BARREL LOCK AND LOCKOUT TAG TO BE INSTALLED AFTER PRESSURE TEST, AND WILL BE REMOVED AFTER CLTW INSPECTION OF PRIVATE LOW PRESSURE PUMP STATION - (CERTIFICATE OF OCCUPANCY HOLD WILL ALSO BE REMOVED).
 - P. WHEN CONNECTING TO A PVC LOW PRESSURE MAIN, NO. 1, NO. 2, NO. 3, NO. 4, AND NO. 24 SHALL BE SCH 80 PVC PIPE AND FITTINGS WITH SOLVENT WELD JOINTS.