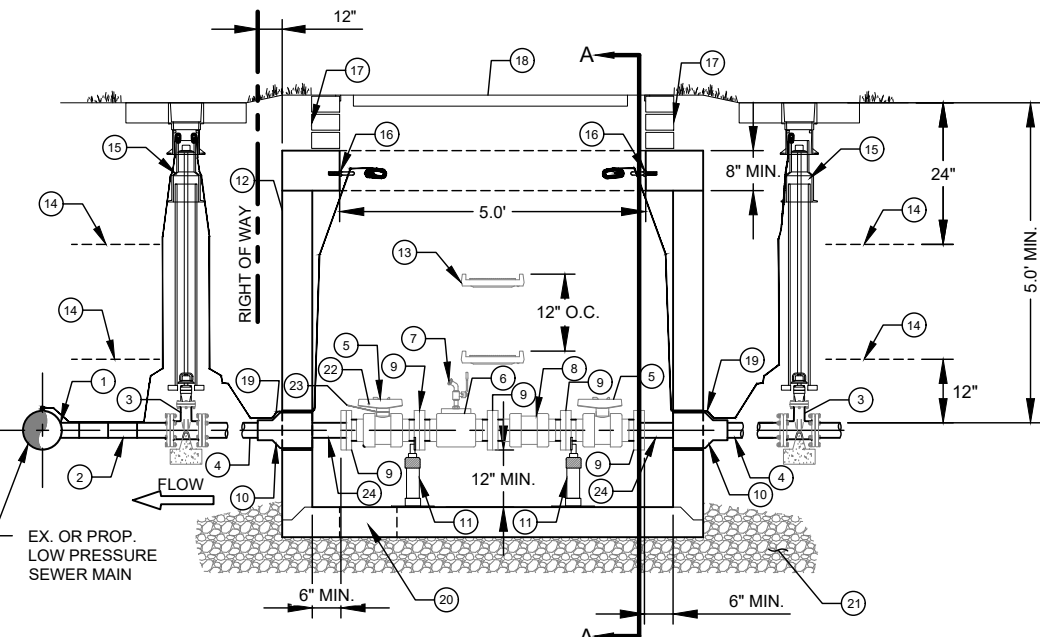
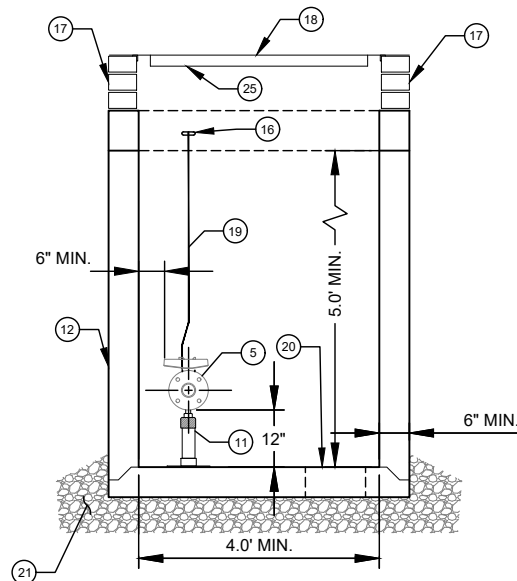


PLAN VIEW



SIDE VIEW



SECTION A-A VIEW

- | NO. | DESCRIPTION: |
|-----|--|
| 1. | 3" OUTLET SDR9 HDPE WYE, WITH CONCRETE THRUST BLOCKING. |
| 2. | 3" SDR9 HDPE 45° BEND, WITH CONCRETE THRUST BLOCKING. |
| 3. | 3" MJ DI PLUG VALVE, W/ SDR9 HDPE MJ ADAPTOR, EXTENSION STEM, 2" OPERATING NUT, AND CONCRETE THRUST BLOCKING/SUPPORT. |
| 4. | 3" SDR9 HDPE PIPE - BUTT FUSED. |
| 5. | 3" PVC HAYWARD TRUE UNION BALL VALVE WITH FLANGE ENDS, LOCKOUT HANDLE. |
| 6. | 3" X 3" X 2" SCH 80 PVC FLANGE TEE WITH 2" SOLVENT WELD OUTLET, 2"X3/4" PVC REDUCING BUSHING, WITH FNPT OUTLET. |
| 7. | 3/4" BRASS BALL VALVE HOSE BIB, MNPT. |
| 8. | 3" PVC HAYWARD TRUE UNION BALL CHECK VALVE WITH FLANGE ENDS. |
| 9. | 3" SCH 80 PVC FLANGE SOLVENT WELD ADAPTORS, IF FLANGED MAJOR COMPONENTS ARE NOT AVAILABLE. |
| 10. | RUBBER PIPE CONNECTOR BOOT (DO NOT GROUT AROUND PIPE). |
| 11. | S.S. ADJUSTABLE FLANGE PIPE SUPPORTS W/ S.S EPOXY ADHESIVE ANCHORS (REQ'D - 2 EACH). |
| 12. | PRECAST CONCRETE VAULT - MIN L,W,D = 6' X 4' X 5'. |
| 13. | PLASTIC STEP - 12" O.C. VERTICAL SPACING. |
| 14. | 6" WIDE "PRESSURE SEWER" WARNING TAPE. |
| 15. | STD SEWER VALVE BOX ASSEMBLY WITH CONCRETE PAD. |
| 16. | 3/8" S.S. EYE BOLT (TYP). |
| 17. | MIN 3 COURSES CAP BLOCK WITH 3/8" MORTAR JOINTS, OR PRECAST RISER SECTION, MAX 2.5'. |
| 18. | 4' X 5' STEEL METER VAULT FRAME AND COVER, 1000 PSF MIN LOAD RATING, COVER SHALL BE "CLT WATER - L. P. SEWER", ERT HANGERS AND SLOTS NOT REQUIRED. |
| 19. | SOLID COPPER AWG #12 GAUGE TRACER WIRE WITH 30 MILS GREEN HDPE INSULATION, TERMINATE WITH 24" AT EYE BOLT. |
| 20. | 12" DIA SUMP HOLE. |
| 21. | 12" COMPACTED #57 WASHED STONE. |
| 22. | BARREL LOCK - FURNISHED BY CLTW. |
| 23. | PUMP STATION INSPECTION LOCKOUT WARNING TAG - FURNISHED BY CLTW. |
| 24. | SDR9 HDPE FLANGE ADAPTOR. |
| 25. | ATTACH GREEN ENGRAVED LABEL, WITH PREMISE NUMBER, AND ADDRESS TO UNDERSIDE OF DOOR, NEAR THE LIFTING HANDLE. |

- NOTES:
- A. VAULT SHALL NOT BE LOCATED IN PAVEMENT, SIDEWALKS OR DRIVEWAYS.
 - B. VAULT SHALL BE 6' LONG, 4' WIDE, 5' DEEP MINIMUM.
 - C. ALL FLANGE HARDWARE SHALL BE 316 OR 304 STAINLESS STEEL WITH ANTI-SEIZE COMPOUND, FLAT WASHER REQUIRED BETWEEN BOLT HEAD AND FLANGE, FLAT WASHER AND LOCK WASHER REQUIRED BETWEEN NUT AND FLANGE. TORQUE TO 20-25 FT. LBS.
 - D. ALL PIPE AND FITTINGS SHALL BE SDR 9 HDPE, EXCEPT AS INDICATED INSIDE THE VAULT.
 - E. ASSEMBLY CONFIGURATION AND LENGTH MAY VARY DUE TO BRAND - VERIFY LENGTH TO DETERMINE MINIMUM VAULT LENGTH.
 - F. ALL CONCRETE SHALL BE MINIMUM 4000 PSI COMPRESSIVE STRENGTH.
 - G. DESIGN SHALL CONFORM TO ASTM C858 - SPECIFICATIONS FOR "UNDERGROUND PRECAST CONCRETE UTILITY STRUCTURE".
 - H. STEEL REINFORCING DESIGN SHALL CONFORM TO ASTM C857.
 - I. REBARS SHALL BE GRADE 60 PER ASTM A615.
 - J. WELDED WIRE FABRIC SHALL CONFORM TO ASTM A185.
 - K. DIAGONAL REINFORCING SHALL BE ADDED AT ALL OPENINGS.
 - L. PIPE PENETRATION SHALL BE SEALED WITH FLEXIBLE CONNECTORS (MANHOLE BOOTS).
 - M. FRAME TO BE FLUSH WITH GROUND OR CONCRETE SIDEWALK, GROUND SHALL SLOPE AWAY FROM VAULT.
 - N. ALL JOINTS SHALL BE MADE WATERTIGHT USING 2 RINGS OF BUTYL RUBBER JOINT MASTIC.
 - O. BARREL LOCK AND LOCKOUT TAG TO BE INSTALLED AFTER PRESSURE TEST, AND WILL BE REMOVED AFTER CLTW INSPECTION OF PRIVATE LOW PRESSURE PUMP STATION - (CERTIFICATION OF OCCUPANCY HOLD WILL ALSO BE REMOVED).
 - P. WHEN CONNECTING TO A PVC LOW PRESSURE MAIN, NO. 1, NO. 2, NO. 3, NO. 4, AND NO. 24 SHALL BE SCH 80 PVC PIPE AND FITTINGS WITH SOLVENT WELD JOINTS.