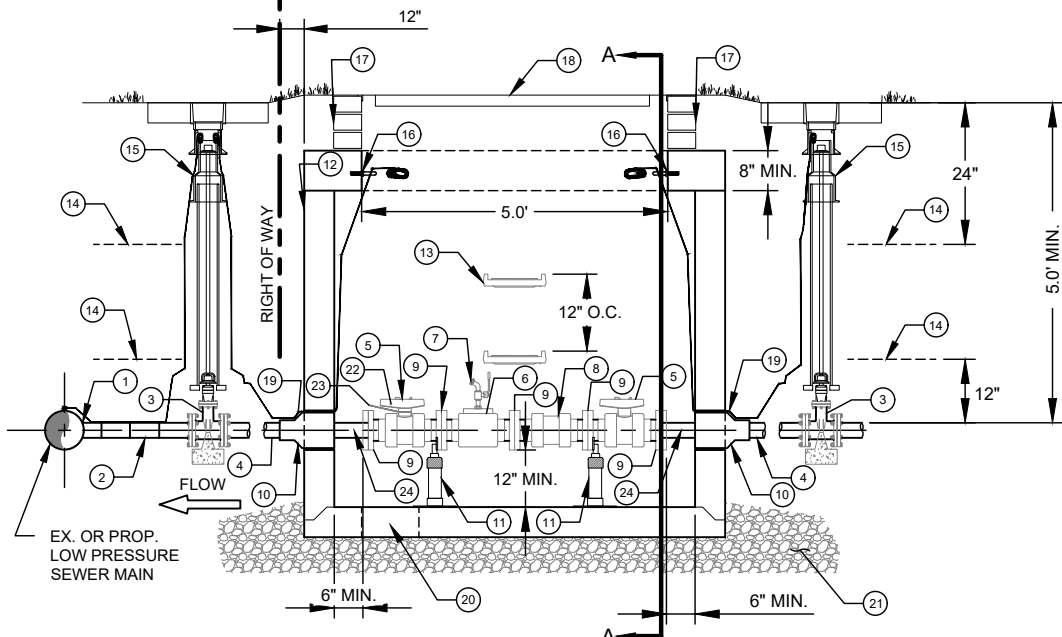
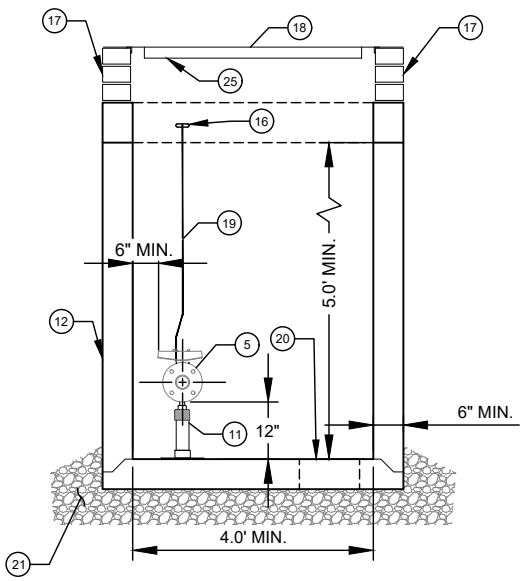


PLAN VIEW



SIDE VIEW



SECTION A-A VIEW

P-#####  
##### XXXXXXXXXXXXX AVE  
APT/UNIT XX

- | NO. | DESCRIPTION:  |
|-----|---|
| 1.  | 4" OUTLET SDR 9 HDPE WYE, WITH CONCRETE THRUST BLOCKING.  |
| 2.  | 4" SDR 9 HDPE 45° BEND, WITH CONCRETE THRUST BLOCKING.  |
| 3.  | 4" MJ DI PLUG VALVE, WITH SDR 9 HDPE MJ ADAPTOR, EXTENSION STEM, 2" OPERATING NUT, AND CONCRETE THRUST BLOCKING/ SUPPORT.                     |
| 4.  | 4" SDR 9 HDPE PIPE - BUTT FUSED.  |
| 5.  | 4" PVC HAYWARD TRUE UNION BALL VALVE WITH FLANGE ENDS, LOCKOUT HANDLE.  |
| 6.  | 4" X 4" X 2" SCH 80 PVC FLANGE TEE WITH 2" SOLVENT WELD OUTLET, 2" X 3/4" PVC REDUCING BUSHING, WITH FNPT OUTLET.                             |
| 7.  | 3/4" BRASS BALL VALVE HOSE BIB, MNPT.   |
| 8.  | 4" PVC HAYWARD TRUE UNION BALL CHECK VALVE W/ FLANGE ENDS.  |
| 9.  | 4" SCH 80 PVC FLANGE SOLVENT WELD ADAPTORS, IF FLANGED MAJOR COMPONENTS ARE NOT AVAILABLE.  |
| 10. | RUBBER PIPE CONNECTOR BOOT (DO NOT GROUT AROUND PIPE).  |
| 11. | S.S. ADJUSTABLE FLANGE PIPE SUPPORTS W/ S.S EPOXY ADHESIVE ANCHORS (REQ'D - 2 EACH).  |
| 12. | PRECAST CONCRETE VAULT - MIN L,W,D = 7' X 4' X 5'.  |
| 13. | PLASTIC STEP - 12" O.C. VERTICAL SPACING.   |
| 14. | 6" WIDE "PRESSURE SEWER" WARNING TAPE.  |
| 15. | STD SEWER VALVE BOX ASSEMBLY WITH CONCRETE PAD.   |
| 16. | 3/8" S.S. EYE BOLT (TYP).   |
| 17. | MIN 3 COURSES CAP BLOCK WITH 3/8" MORTAR JOINTS, OR PRECAST RISER SECTION, MAX 2.5'.  |
| 18. | 4' X 5' STEEL METER VAULT FRAME AND COVER, 1000 PSF MIN LOAD RATING, COVER SHALL BE "CLTW - L. P. SEWER", ERT HANGERS AND SLOTS NOT REQUIRED. |
| 19. | SOLID COPPER AWG #12 GAUGE TRACER WIRE WITH 30 MILS GREEN HDPE INSULATION, TERMINATE WITH 24" AT EYE BOLT.                                    |
| 20. | 12" DIAMETER SUMP HOLE.   |
| 21. | 12" COMPACTED #57 WASHED STONE.   |
| 22. | BARREL LOCK - FURNISHED BY CLTW.  |
| 23. | PUMP STATION INSPECTION LOCKOUT WARNING TAG - FURNISHED BY CLTW.  |
| 24. | SDR 9 HDPE FLANGE ADAPTOR.  |
| 25. | ATTACH GREEN ENGRAVED LABEL, WITH PREMISE NUMBER AND ADDRESS, TO UNDERSIDE OF DOOR, NEAR THE LIFTING HANDLE.                                  |

- NOTES:
- A. VAULT SHALL NOT BE LOCATED IN PAVEMENT, SIDEWALKS OR DRIVEWAYS.
  - B. VAULT SHALL BE 7' LONG, 4' WIDE, 5' DEEP MINIMUM.
  - C. ALL FLANGE HARDWARE SHALL BE 316 OR 304 STAINLESS STEEL WITH ANTI-SEIZE COMPOUND, FLAT WASHER REQUIRED BETWEEN BOLT HEAD AND FLANGE, FLAT WASHER AND LOCK WASHER REQUIRED BETWEEN NUT AND FLANGE. TORQUE TO 20-25 FT. LBS.
  - D. ALL PIPE AND FITTINGS SHALL BE SDR 9 HDPE, EXCEPT AS INDICATED INSIDE THE VAULT.
  - E. ASSEMBLY CONFIGURATION AND LENGTH MAY VARY DUE TO BRAND - VERIFY LENGTH TO DETERMINE MINIMUM VAULT LENGTH.
  - F. ALL CONCRETE SHALL BE MINIMUM 4000 PSI COMPRESSIVE STRENGTH.
  - G. DESIGN SHALL CONFORM TO ASTM C858 - SPECIFICATIONS FOR "UNDERGROUND PRECAST CONCRETE UTILITY STRUCTURE".
  - H. STEEL REINFORCING DESIGN SHALL CONFORM TO ASTM C857.
  - I. REBARS SHALL BE GRADE 60 PER ASTM A615.
  - J. WELDED WIRE FABRIC SHALL CONFORM TO ASTM A185.
  - K. DIAGONAL REINFORCING SHALL BE ADDED AT ALL OPENINGS.
  - L. PIPE PENETRATION SHALL BE SEALED WITH FLEXIBLE CONNECTORS (MANHOLE BOOTS).
  - M. FRAME TO BE FLUSH WITH GROUND OR CONCRETE SIDEWALK, GROUND SHALL SLOPE AWAY FROM VAULT.
  - N. ALL JOINTS SHALL BE MADE WATERTIGHT USING 2 RINGS OF BUTYL RUBBER JOINT MASTIC.
  - O. BARREL LOCK AND LOCKOUT TAG TO BE INSTALLED AFTER PRESSURE TEST, AND WILL BE REMOVED AFTER CLTW INSPECTION OF PRIVATE LOW PRESSURE PUMP STATION - (CERTIFICATE OF OCCUPANCY HOLD WILL ALSO BE REMOVED).
  - P. WHEN CONNECTING TO A PVC LOW PRESSURE MAIN, NO. 1, NO. 2, NO. 3, NO. 4, AND NO. 24 SHALL BE SCH 80 PVC PIPE AND FITTINGS WITH SOLVENT WELD JOINTS.