

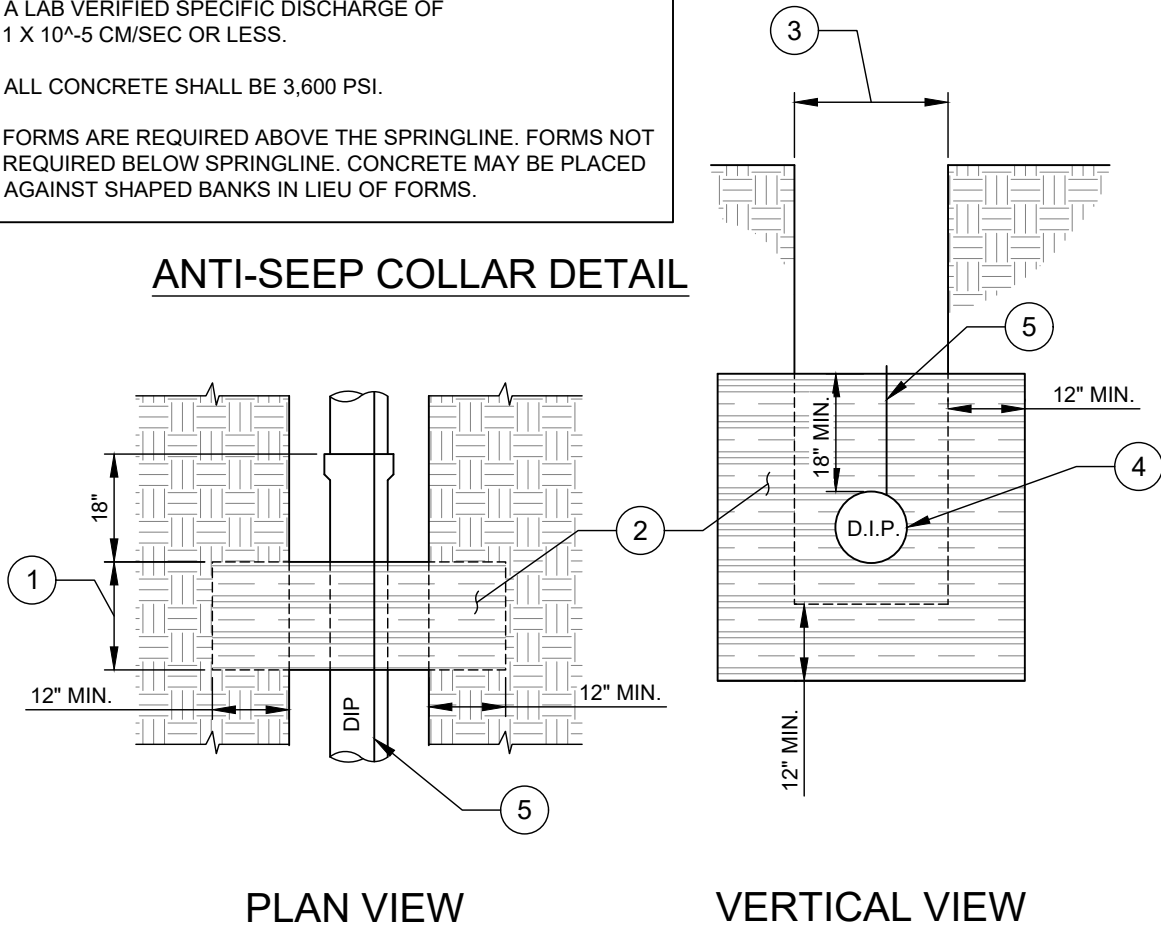
NO. DESCRIPTION:

1. 18" (UNLESS FIELD CONDITIONS DICTATE OTHERWISE).
2. CONCRETE OR COMPACTED CLAY (BENTONITE). COMPACTED CLAY MINIMUM 12" THICK LAYER OUTSIDE TRENCH SHALL BE 95% OF THE STANDARD PROCTOR DRY DENSITY TO MINIMUM OF 5% OF THE OPTIMUM COMPACTION MOISTURE CONTENT.
3. TRENCH.
4. PIPE O.D..
5. TRACER WIRE INSTALLED OVER TOP OF COLLAR PER CLTW STANDARD DETAIL.

NOTES:

- A. THE CLAY SHALL BE TESTED BY AN INDEPENDENT SOILS LAB TO VERIFY ITS SUITABILITY. COMPACTED CLAY SHALL HAVE A LAB VERIFIED SPECIFIC DISCHARGE OF 1×10^{-5} CM/SEC OR LESS.
- B. ALL CONCRETE SHALL BE 3,600 PSI.
- C. FORMS ARE REQUIRED ABOVE THE SPRINGLINE. FORMS NOT REQUIRED BELOW SPRINGLINE. CONCRETE MAY BE PLACED AGAINST SHAPED BANKS IN LIEU OF FORMS.

ANTI-SEEP COLLAR DETAIL



NO. DESCRIPTION:

1. CONCRETE TO BE 3,600 PSI.
2. 3 No. 4 REBARS.
3. CONCRETE PLACED ON UNDISTURBED SOIL AS APPROVED BY THE ENGINEER.
4. PIPE O.D..
5. INSTALL 1" CONDUIT FOR TRACER WIRE TO RUN THROUGH. TRACER WIRE INSTALLED PER CLTW STANDARD DETAIL.

NOTES:

- A. FORMS ARE REQUIRED ABOVE THE SPRINGLINE. FORMS NOT REQUIRED BELOW SPRINGLINE. CONCRETE MAY BE PLACED AGAINST SHAPED BANKS IN LIEU OF FORMS.
- B. PROVIDE PE STAMPED ANTI-FLOATATION CALCULATION. A LARGER CONCRETE COLLAR MAY BE REQUIRED IF BUOYANCY IS NOT PREVENTED.
- C. NO PIPE JOINTS IN THE CONCRETE BLOCK. JOINTS SHALL BE 18" BEHIND THE BELL.

ANTI-FLOATATION COLLAR DETAIL

