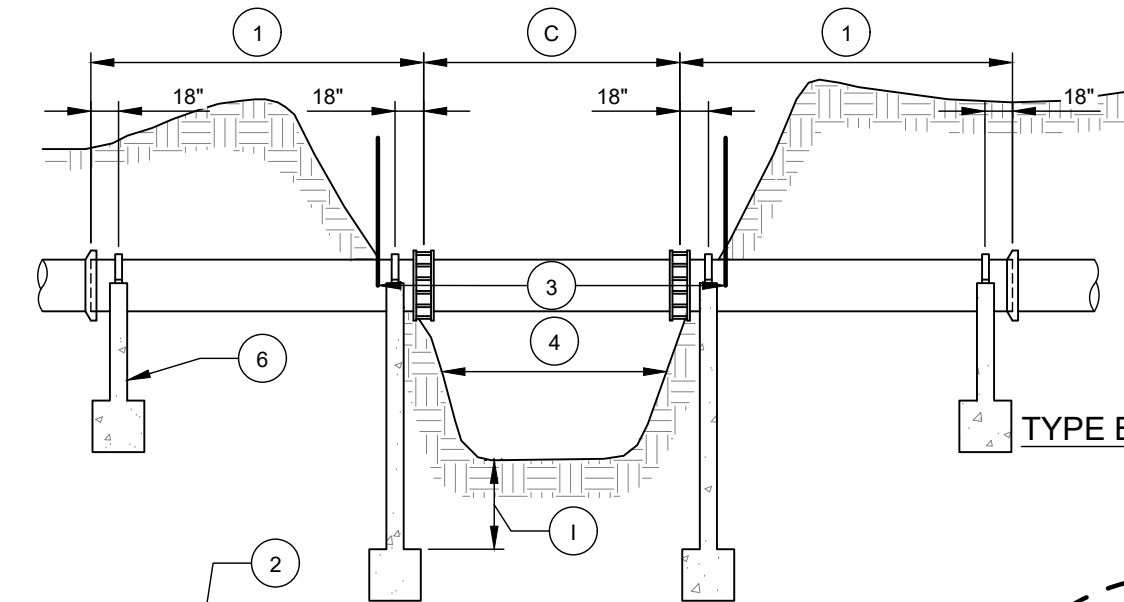
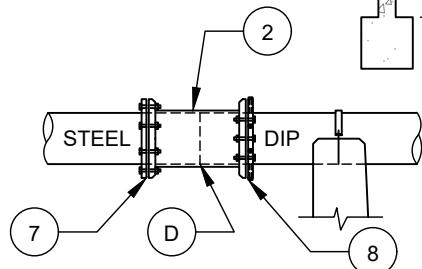


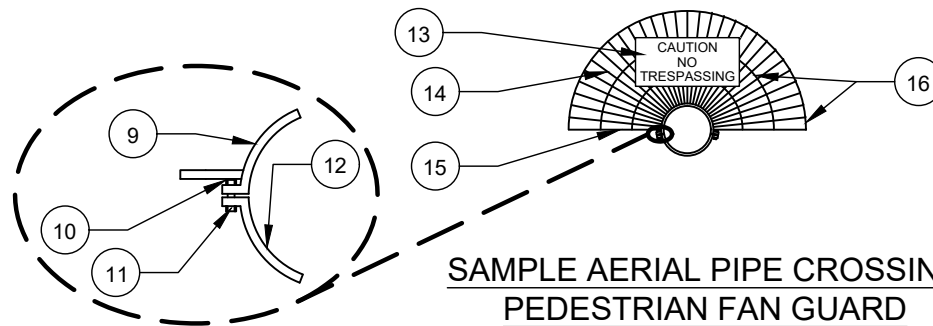
TYPE A CROSSING



TYPE B CROSSING



ENLARGED DETAIL



**SAMPLE AERIAL PIPE CROSSING
PEDESTRIAN FAN GUARD**

NOTES FOR TYPE A CROSSING:

- A. MINIMUM DEPTH IS BASED ON BLOW COUNTS/BEARING CAPACITY AS SPECIFIED.
- B. MAXIMUM HEIGHT FROM PIPE TO UNDISTURBED SOIL IS 20'.

NOTES FOR TYPE A AND B CROSSING:

- C. VARIES (40' MAX. 8" & 10" PIPE) (50' MAX. 12" AND LARGER PIPE) "HIGH STRENGTH" STEEL PIPE WITH LINING/COATING PER SPECIFICATIONS (SEE NOTE E).
- D. END OF STEEL PIPE TO BE CENTERED INSIDE COUPLING.
- E. STEEL PIPE MUST BE SEAMLESS OR STRAIGHT SEAM OR SPIRAL WELD.
- F. TRANSITION COUPLING SHALL BE A LONG PATTERN SOLID SLEEVE AND RESTRAINED ON D.I.P. END.
- G. FOR CREEK CHANNELS LESS THAN 20' IN WIDTH, THE PIPE CAN BE R.J. D.I.P. WITHOUT TRANSITION COUPLINGS.
- H. TERMINATE TRACER WIRE AT PEDESTRIAN GUARD OR PIPE.

NOTES FOR TYPE B CROSSING:

- I. 4' MINIMUM. FOOTING DEPTH SHALL BE TO SUITABLE GRADE AS DETERMINED BY THE ENGINEER, SHALL NOT BE LESS THAN SHOWN (EXCEPT WHERE PIER IS ANCHORED TO SOLID ROCK. TOP OF FOOTING SHALL NOT BE ABOVE TOP OF SOLID ROCK).

NO. DESCRIPTION:

1. FULL JOINT DIP.
2. LONG PATTERN SLEEVE. LENGTH VARIES DEPENDING ON PIPE DIAMETER.
3. PEDESTRIAN FAN GUARD (SEE DET. ON THIS SHEET). INSTALLATION AS PER CLTW.
4. CREEK CHANNEL.
5. STEEL H-PILE PIERS. SEE CLTW STD. DETAIL.
6. REINFORCED CONCRETE PIER. SEE CLTW STD. DETAIL.
7. NON-RESTRAINED JOINT (STANDARD MJ GLAND PACK) WITH OVERSIZE (IPS) TRANSITION GASKET.
8. WEDGE ACTION JOINT RESTRAINT (MEGA-LUG).
9. 3/8" X 3" STEEL BAR.
10. ADEQUATE CLEARANCE FOR BOLTS.
11. 5/8" X 3" BOLTS.
12. O.D. OF PIPE.
13. "NO TRESPASSING" SIGN.
14. 31-5/8" DIAMETER RODS @ 6" O.C.. WELD EACH ROD TO PIPE CLAMP.
15. EPOXY COATING (TYP.).
16. 5/8" DIAMETER ROD WELDED TO END OF EACH RADIAL ROD (TYP.).