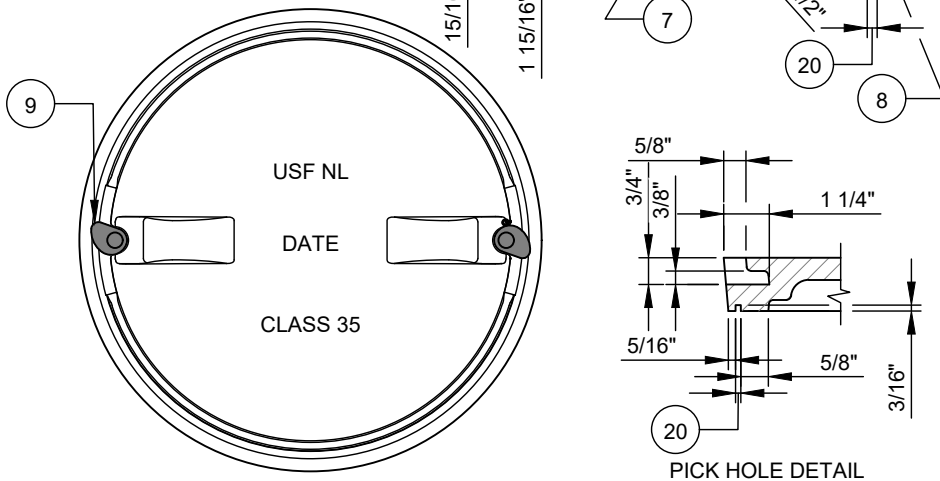
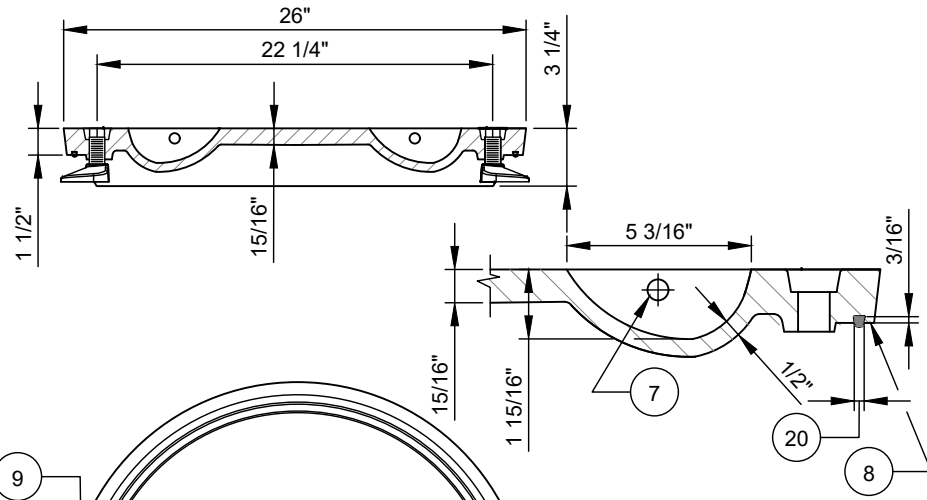
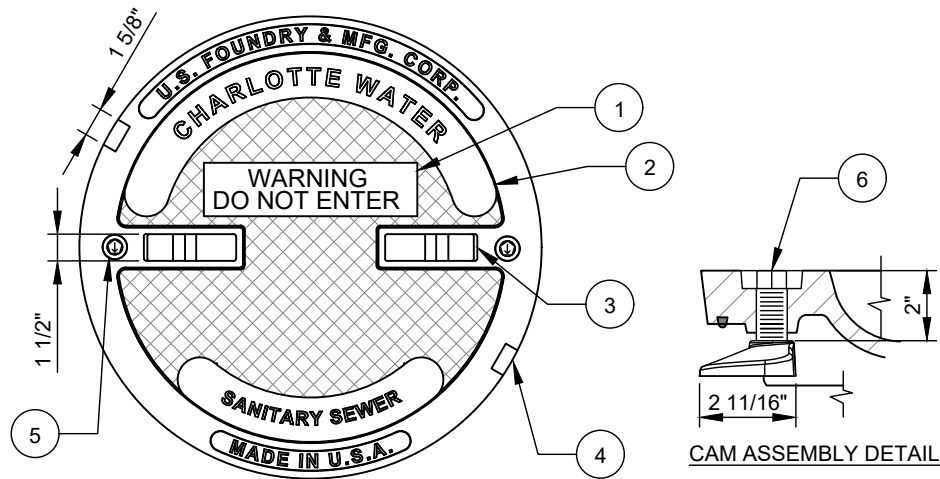
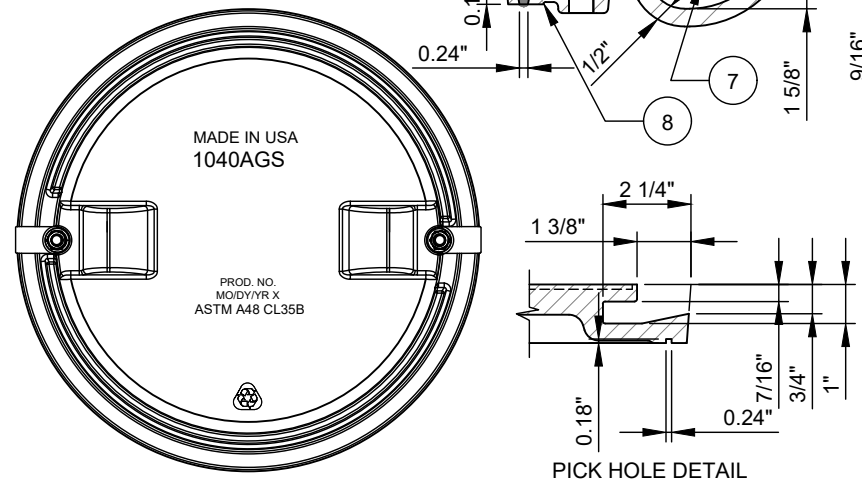
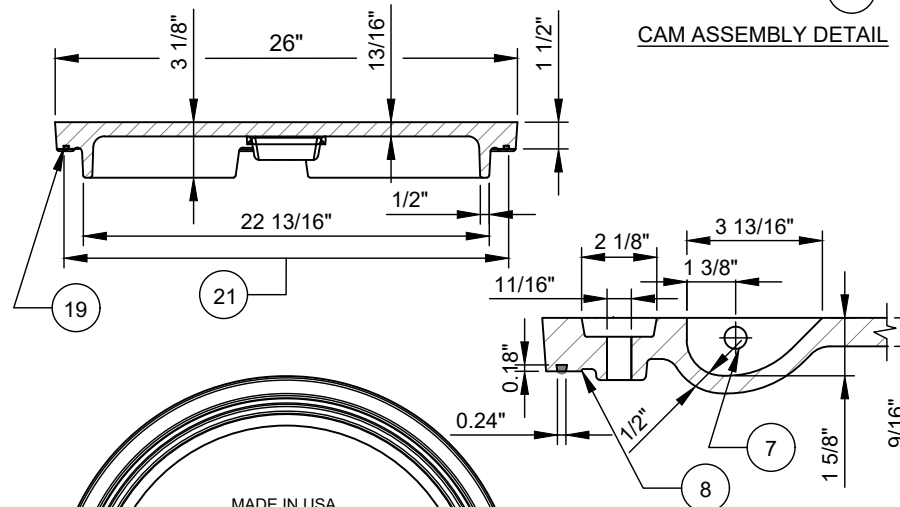
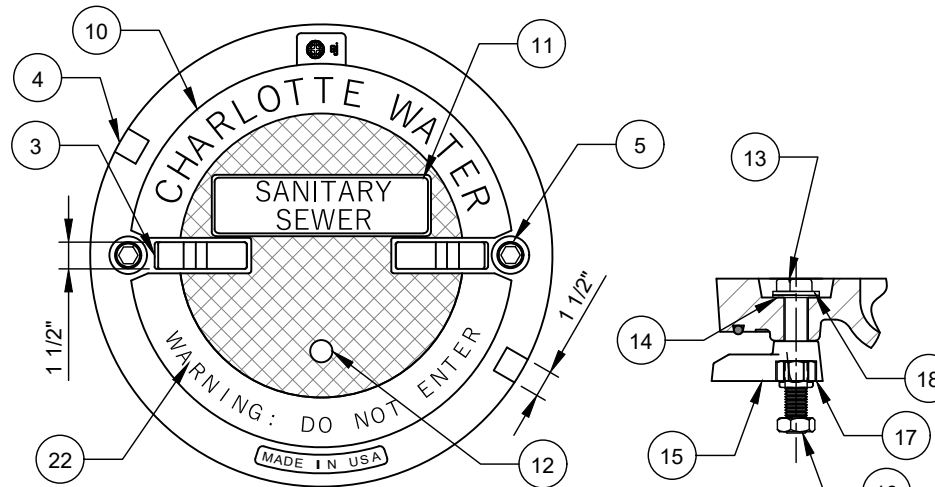


U.S. FOUNDRY & MFG. CORP.



WEIGHT - 150 LB. MIN., 0% MINUS TOLERANCE

EJ (EJ GROUP, INC.)



WEIGHT - 145 LB. MIN., 0% MINUS TOLERANCE

NO. DESCRIPTION:

1. 1 INCH ARIAL TEXT.
2. 5/8" ARIAL STYLE TEXT.
3. (2) - LIFTING BARS.
4. (2) - NON PENETRATING PICK HOLES.
5. CAM LOCK SEE ASSEMBLY DETAIL.
6. USF WEDGE LOC 5/8" HEX HEAD BOLT ALL GRADE S.S. TYPE 304.
7. 5/8" TYPE 304 S.S. ROD.
8. MACHINED SURFACE.
9. 7/8" DIA. CAM LOCK HOLE @ 22" DIA.
10. 1 1/4" SHARP FACE GOTHIC TEXT.
11. 1 INCH SHARP FACE GOTHIC TEXT.
12. 1 1/8" BOSS.
13. BOLT HEX 5/8"-11 X 4" TYPE 304 S.S.
14. WASHER 1/16" X 5/8" X 1 1/2" RUBBER.
15. LOCK LUG.
16. NUT HEX JAM 5/8"-11 TYPE 304 S.S.
17. NUT HEX 5/8"-11 TYPE 304 S.S. NYLK.
18. WASHER 5/8" ID1.50 OD TYPE 304 S.S.
19. 1/4" NEOPRENE GASKET.
20. 3/16" DOVETAIL GROOVE.
21. 25" DIAMETER (O.D. OF GKT GROOVE).
22. 3/4" SHARP FACE GOTHIC TEXT.

NOTES:

- A. LOAD RATING - HEAVY DUTY.
- B. MATERIAL - ASTM A48 - CLASS 35 GRAY IRON.
- C. COATING - UNDIPPED.
- D. COVER SHALL CONFORM TO DIMENSION AND WEIGHT REQUIREMENTS.
- E. COVER SHALL NOT BE OUT OF ROUND.