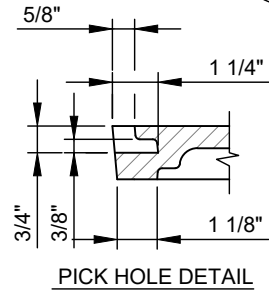
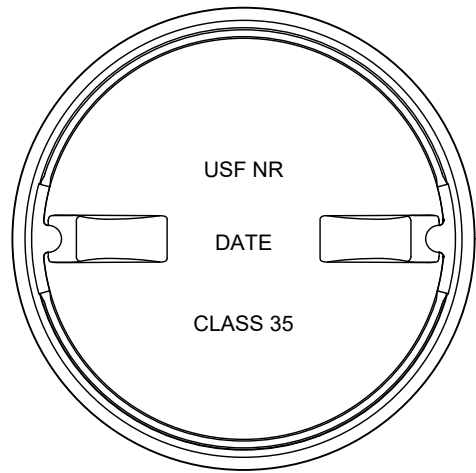
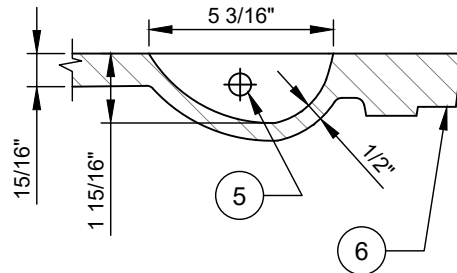
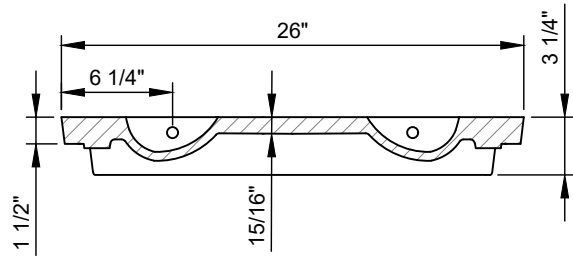
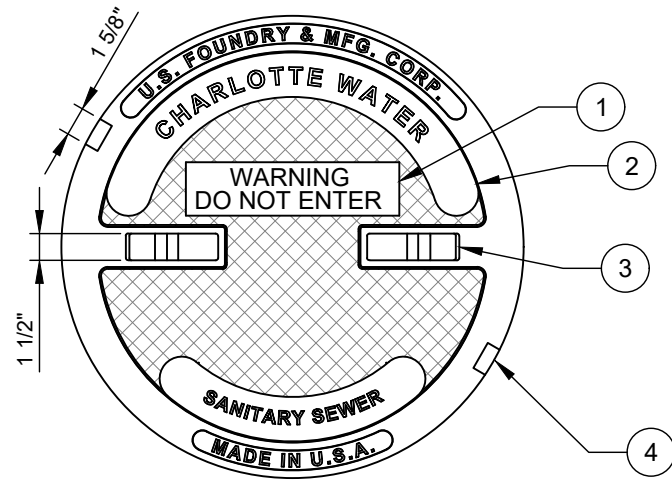
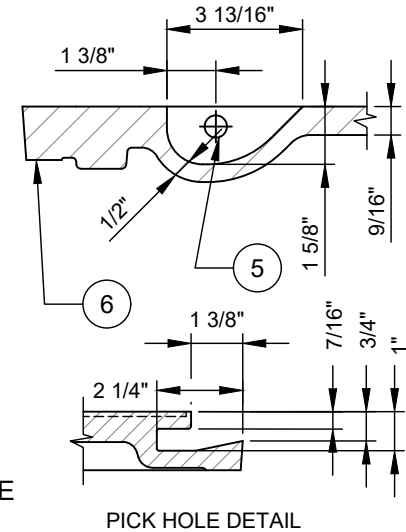
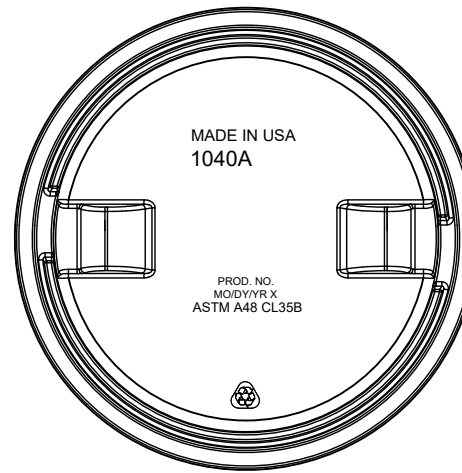
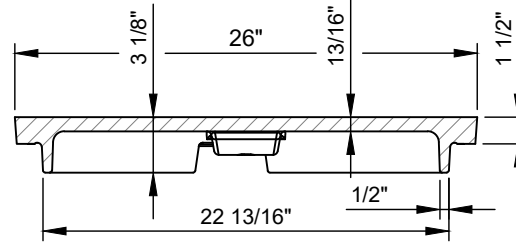
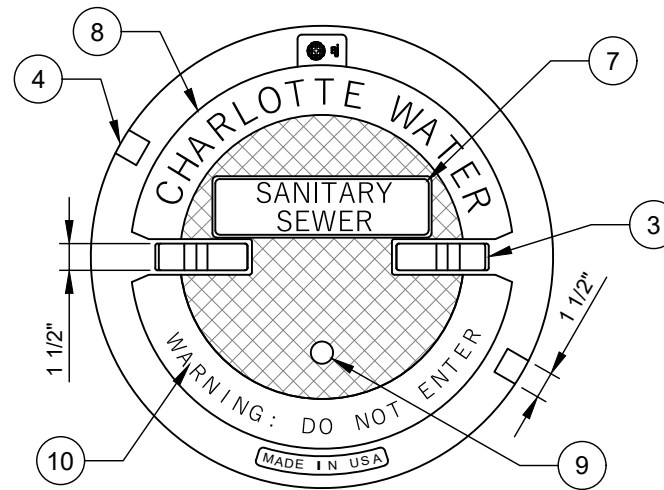


U.S. FOUNDRY & MFG. CORP.



WEIGHT - 150 LB. MIN., 0% MINUS TOLERANCE

EJ (EJ GROUP, INC.)



WEIGHT - 145 LB. MIN., 0% MINUS TOLERANCE

NO. DESCRIPTION:

1. 1 INCH ARIAL TEXT.
2. 5/8" ARIAL STYLE TEXT.
3. (2) - LIFTING BARS.
4. (2) - NON PENETRATING PICK HOLES.
5. 5/8" TYPE 304 S.S. ROD.
6. MACHINED SURFACE.
7. 1 INCH SHARP FACE GOTHIC TEXT.
8. 1 1/4" SHARP FACE GOTHIC TEXT.
9. 1 1/8" BOSS.
10. 3/4" SHARP FACE GOTHIC TEXT.

NOTES:

- A. LOAD RATING - HEAVY DUTY.
- B. MATERIAL - ASTM A48 - CLASS 35 GRAY IRON.
- C. COATING - UNDIPPED.
- D. COVER SHALL CONFORM TO DIMENSION AND WEIGHT REQUIREMENTS.
- E. COVER SHALL NOT BE OUT OF ROUND.

CHARLOTTE WATER

CHARLOTTE WATER  
A CITY OF CHARLOTTE DEPARTMENT  
STANDARD DETAILS  
GRAVITY SEWER

TYPE 2 MANHOLE COVER  
24-INCHES DIAMETER (CLEAR OPENING)  
SOLID - NO VENT HOLE, NO GASKET, NO CAM LOCK

NO SCALE

VERSION 1.0  
DATE 04/2024  
DETAIL 11.3.6