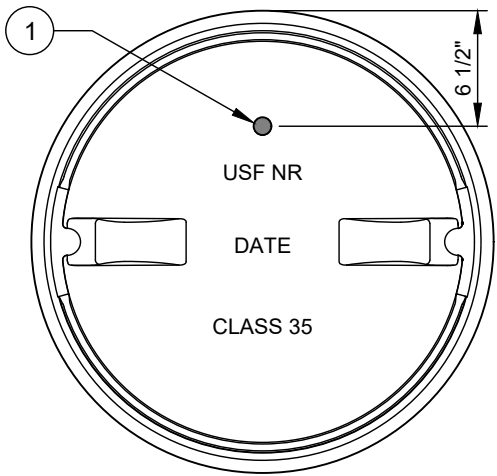
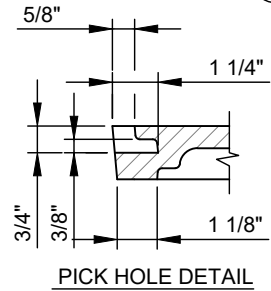
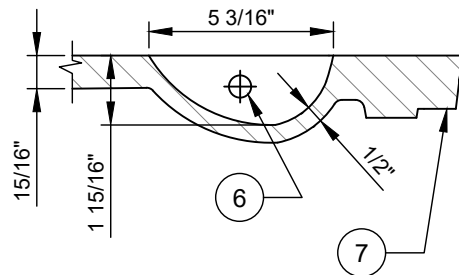
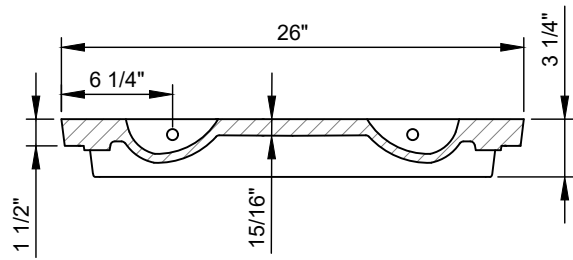
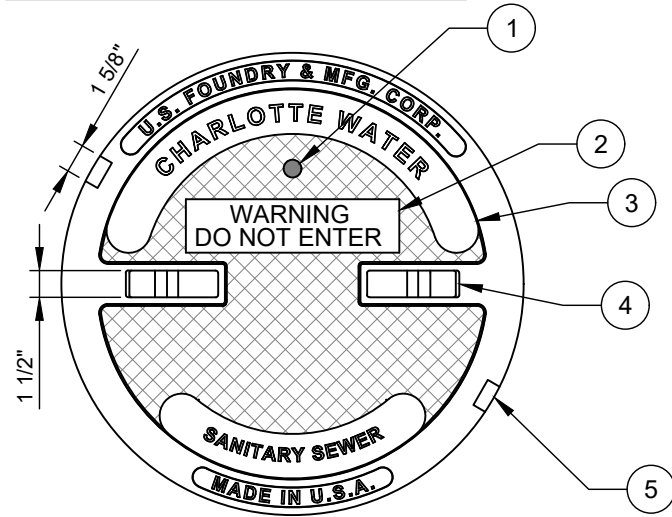
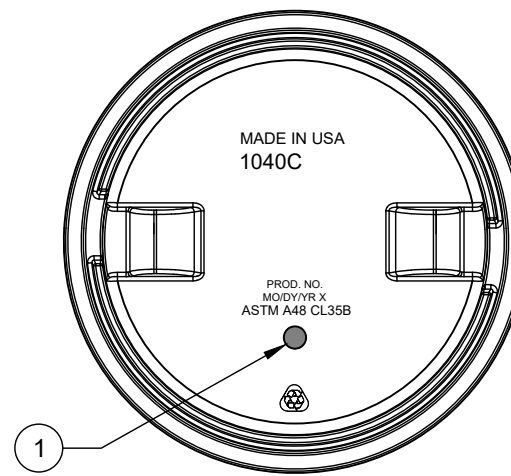
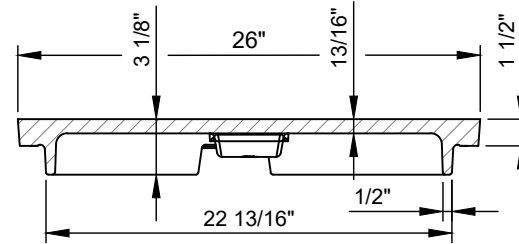
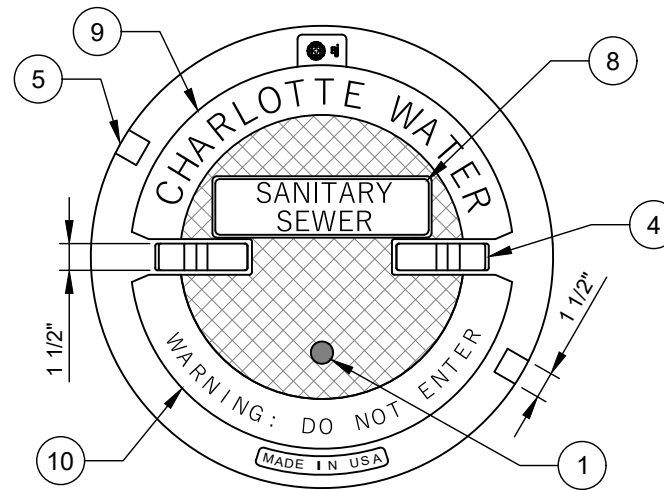


U.S. FOUNDRY & MFG. CORP.



WEIGHT - 150 LB. MIN., 0% MINUS TOLERANCE

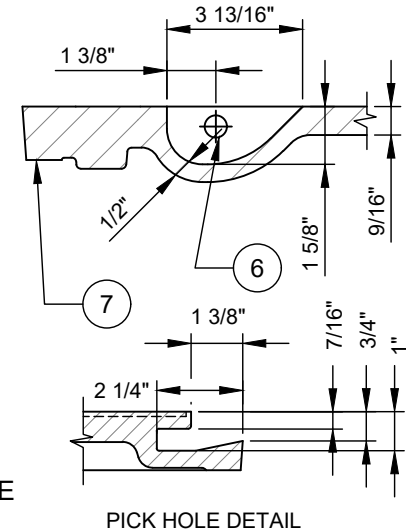
EJ (EJ GROUP, INC.)



WEIGHT - 145 LB. MIN., 0% MINUS TOLERANCE

NO.	DESCRIPTION:
1.	1 INCH DIAMETER VENT HOLE.
2.	1 INCH ARIAL TEXT.
3.	5/8" ARIAL STYLE TEXT.
4.	(2) - LIFTING BARS.
5.	(2) - NON PENETRATING PICK HOLES.
6.	5/8" TYPE 304 S.S. ROD.
7.	MACHINED SURFACE.
8.	1 INCH SHARP FACE GOTHIC TEXT.
9.	1 1/4" SHARP FACE GOTHIC TEXT.
10.	3/4" SHARP FACE GOTHIC TEXT.

NOTES:
A. LOAD RATING - HEAVY DUTY.
B. MATERIAL - ASTM A48 - CLASS 35 GRAY IRON.
C. COATING - UNDIPPED.
D. COVER SHALL CONFORM TO DIMENSION AND WEIGHT REQUIREMENTS.
E. COVER SHALL NOT BE OUT OF ROUND.



PICK HOLE DETAIL

CHARLOTTE WATER
A CITY OF CHARLOTTE DEPARTMENT
STANDARD DETAILS
GRAVITY SEWER

TYPE 1 MANHOLE COVER
24-INCHES DIAMETER (CLEAR OPENING)
VENTED-ONE VENT HOLE, NO GASKET, NO CAM LOCK

NO SCALE
VERSION 1.0
DATE 04/2024
DETAIL 11.3.5