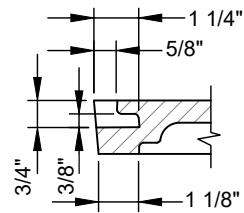
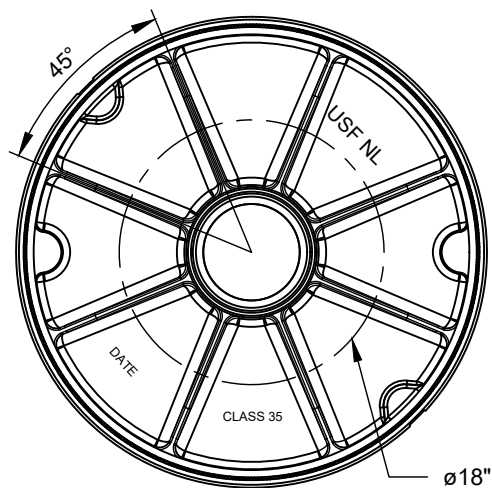
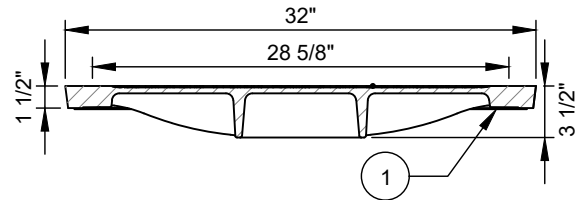
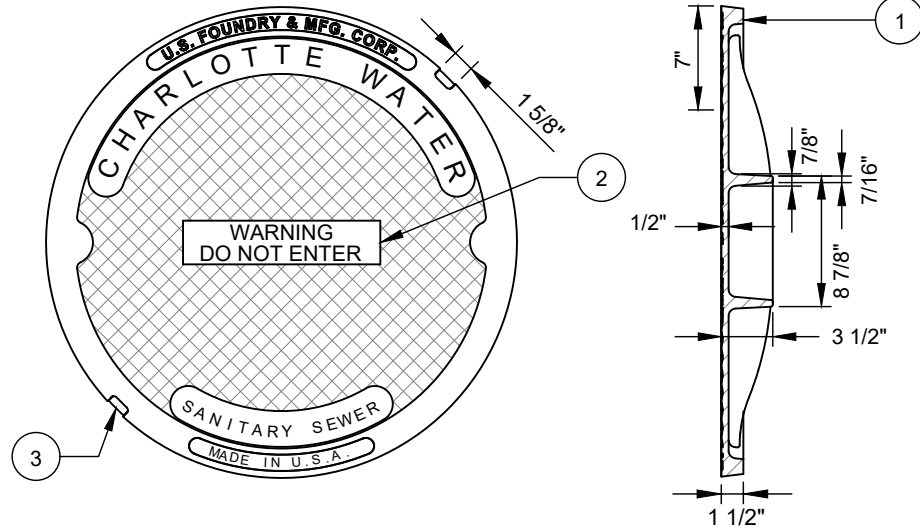


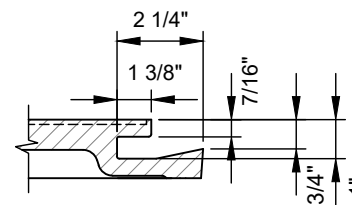
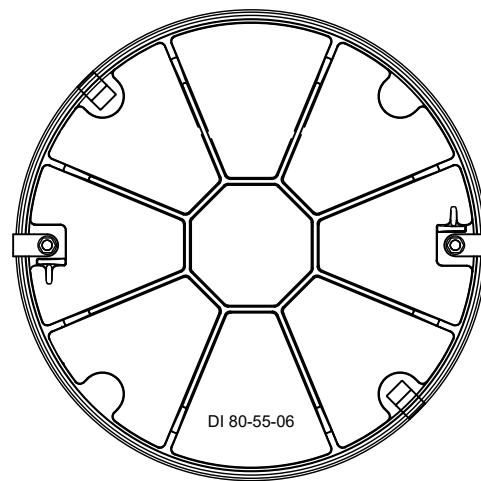
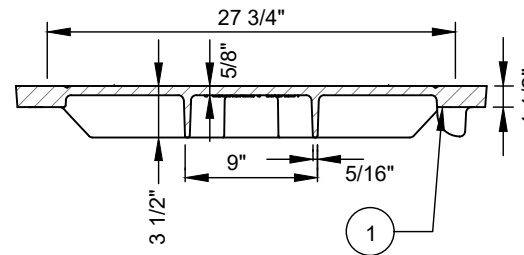
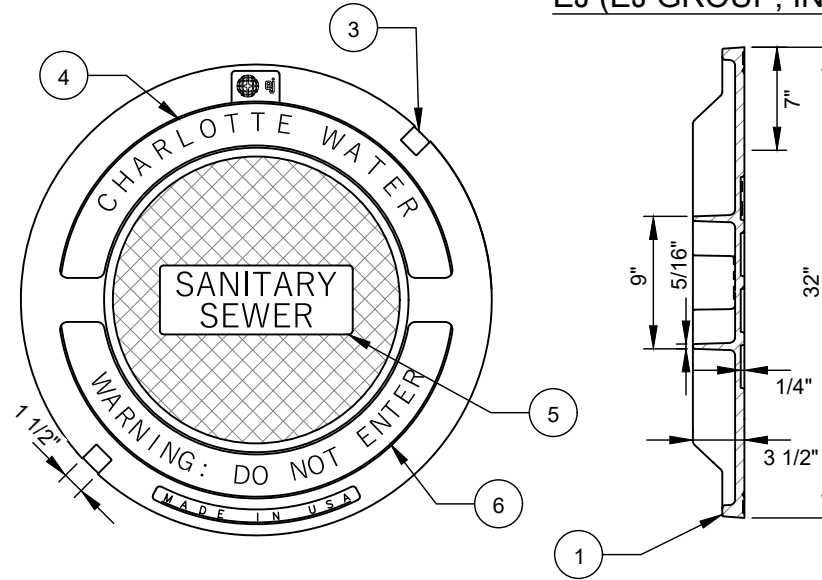
U.S. FOUNDRY & MFG. CORP.



PICK HOLE DETAIL

WEIGHT - 165 LB. MIN., 0% MINUS TOLERANCE
MATERIAL - ASTM A48 CLASS 35 - CAST IRON

EJ (EJ GROUP, INC.)



PICK HOLE DETAIL

WEIGHT - 150 LB. MIN., 0% MINUS TOLERANCE
MATERIAL - ASTM A536 DUCTILE IRON - GRADE 80-55-06

NO.	DESCRIPTION:
1.	MACHINED SURFACE.
2.	1 INCH ARIAL STYLE TEXT TYP.
3.	(2)-NON PENETRATING PICKHOLES.
4.	1 INCH SHARP FACE GOTHIC TEXT.
5.	1 3/4" SHARP FACE GOTHIC TEXT.
6.	1 INCH SHARP FACE GOTHIC TEXT.

NOTES:	
A.	LOAD RATING - HEAVY DUTY.
B.	MATERIAL - DUCTILE IRON OR CAST IRON AS INDICATED IN THE DETAIL.
C.	COATING - UNDIPPED.
D.	COVER SHALL CONFORM TO DIMENSION AND WEIGHT REQUIREMENTS.
E.	COVER SHALL NOT BE OUT OF ROUND.

CHARLOTTE WATER
A CITY OF CHARLOTTE DEPARTMENT
STANDARD DETAILS
GRAVITY SEWER

TYPE 6 MANHOLE COVER
30-INCHES DIAMETER (CLEAR OPENING)
SOLID - NO VENT HOLE, NO GASKET, NO CAM LOCK

NO SCALE
VERSION 1.0
DATE 04/2024
DETAIL 11.3.10