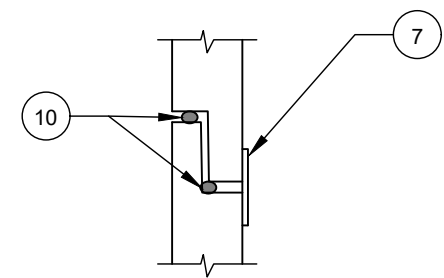


NO. DESCRIPTION:

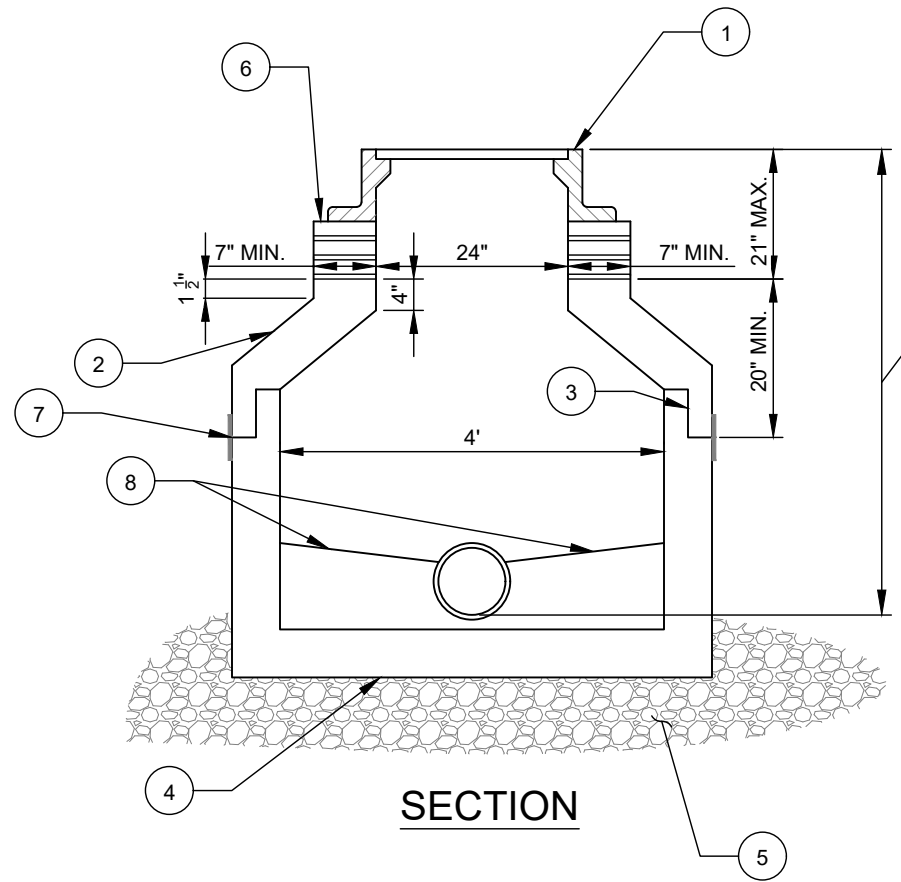
1. CLTW STANDARD FRAME AND COVER.
2. CONCENTRIC CONCRETE CONE SECTION.
3. JOINT.
4. MIN. 6" CONCRETE BASE.
5. 6" MIN. #57 STONE BASE, SUITABLE BEARING CAPACITY AS APPROVED BY GEOTECHNICAL ENGINEER.
6. PRECAST CONCRETE, RUBBER, OR EPP GRADE RINGS PER TECHNICAL SPECIFICATIONS.
7. 6" (MIN.) WIDE BUTYL RUBBER JOINT WRAP REQUIRED ON EXTERIOR OF ALL JOINTS.
8. THE SHELF SHALL SLOPE 1" PER FOOT (MIN.) FROM THE MANHOLE WALL TO THE TROUGH.
9. 5' MAX. (FROM RIM TO INVERT).
10. BUTYL RUBBER JOINT SEALANT-2 FULL CIRCLES EACH JOINT COMPRESSED (TYP.). USED BETWEEN PRECAST SECTIONS AND FRAME.

NOTES:

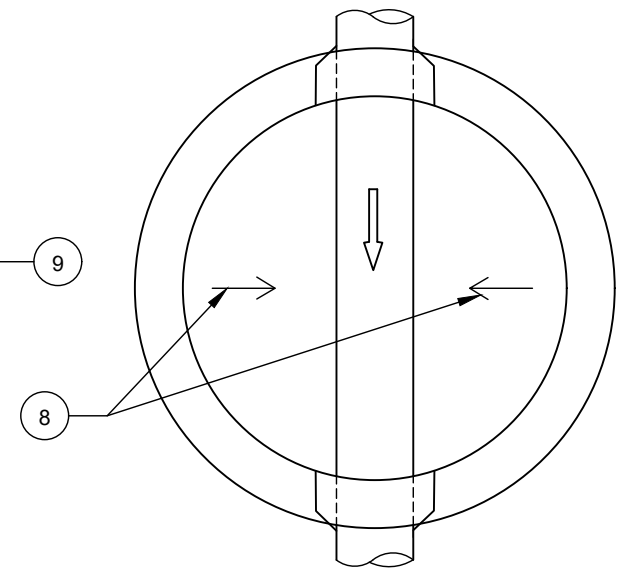
- A. MANHOLE TO CONFORM TO ASTM C478 EXCEPT AS MODIFIED BELOW.
- B. MANHOLE BASE TO BE REINFORCED WITH A MINIMUM AREA OF 0.20 SQ. IN. PER LINEAR FOOT EACH WAY. WALL REINFORCING TO BE A MINIMUM OF 0.12 SQ. IN. PER LINEAR FOOT. EITHER TONGUE OR GROOVE OF JOINTS SHALL HAVE REINFORCING EQUAL IN AREA TO MINIMUM OF WALL SECTION.
- C. ALL JOINTS SHALL CONFORM TO ASTM C443.
- D. ALL PIPE OPENINGS TO BE NO GREATER THAN 4" LARGER THAN O.D. OF PIPE AND ADDITIONALLY REINFORCED WITH A MINIMUM OF 0.20 SQ. IN. OF STEEL AT 90°. ADDITIONAL REINFORCING NOT REQUIRED FOR CORED OPENINGS.
- E. ALL SURFACES SHALL BE SMOOTH, EVEN TEXTURED WITH A MINIMUM OF HONEYCOMB, FINS AND IMPERFECTIONS.
- F. PENETRATING LIFTING HOLES SHALL BE PLUGGED WITH EXPANSION GROUT OR HAVE WATERTIGHT PLASTIC INSERTS.
- G. SEE CLTW 4' DIAMETER MANHOLE STANDARD DETAIL FOR ADDITIONAL REQUIREMENTS.



JOINT DETAIL



SECTION



PLAN