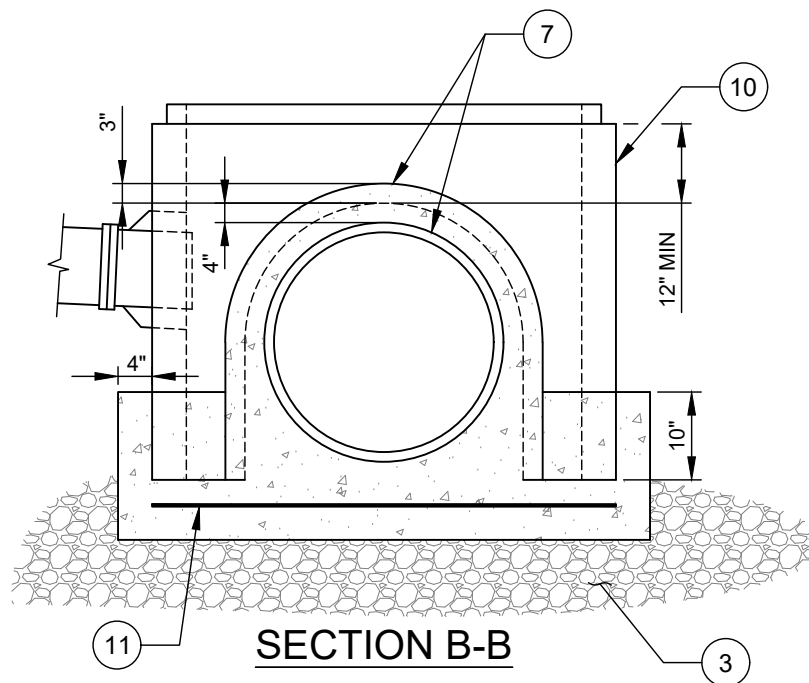


SECTION A-A



SECTION B-B

NO. DESCRIPTION:

1. THE SHELF SHALL SLOPE 1 INCH PER FOOT FROM THE MANHOLE WALL TO THE TROUGH.
2. TOP HALF OF PIPE SHALL BE CUT AND REMOVED FROM MANHOLE WHEN APPROVED BY THE INSPECTOR.
3. 6" MINIMUM #57 STONE BASE, SUITABLE BEARING CAPACITY AS APPROVED BY GEOTECHNICAL ENGINEER.
4. MATCH CROWNS UNLESS THE PIPE IS THE SAME DIAMETER AS THE MAIN LINE PIPE. THEN A DROP OF 0.2' BETWEEN INVERTS WILL BE PROVIDED.
5. 6" (MIN.) WIDE BUTYL RUBBER JOINT WRAP REQUIRED ON EXTERIOR OF ALL JOINTS.
6. EXISTING SEWER PIPE.
7. CONCRETE COLLAR (TYP.).
8. PROPOSED SEWER PIPE OR LATERAL PIPE.
9. FLEXIBLE WATERTIGHT CONNECTOR.
10. SECTION OF PRECAST MANHOLE.
11. #5 REBARS AT 6" ON CENTER EACH WAY.

NOTES:

- A. MANHOLES SHALL ALSO COMPLY WITH CLTW STANDARD DETAILS AS APPLICABLE.
- B. USE 3,600 PSI CONCRETE.
- C. ALL PIPE OPENINGS SHALL BE NO GREATER THAN 4" LARGER THAN OUTSIDE DIAMETER OF PIPE AND SHALL BE ADDITIONALLY REINFORCED WITH A MINIMUM OF 0.20 SQ. IN. OF STEEL AT 90°.
- D. STEPS SHALL BE OVER THE WIDEST SHELF.