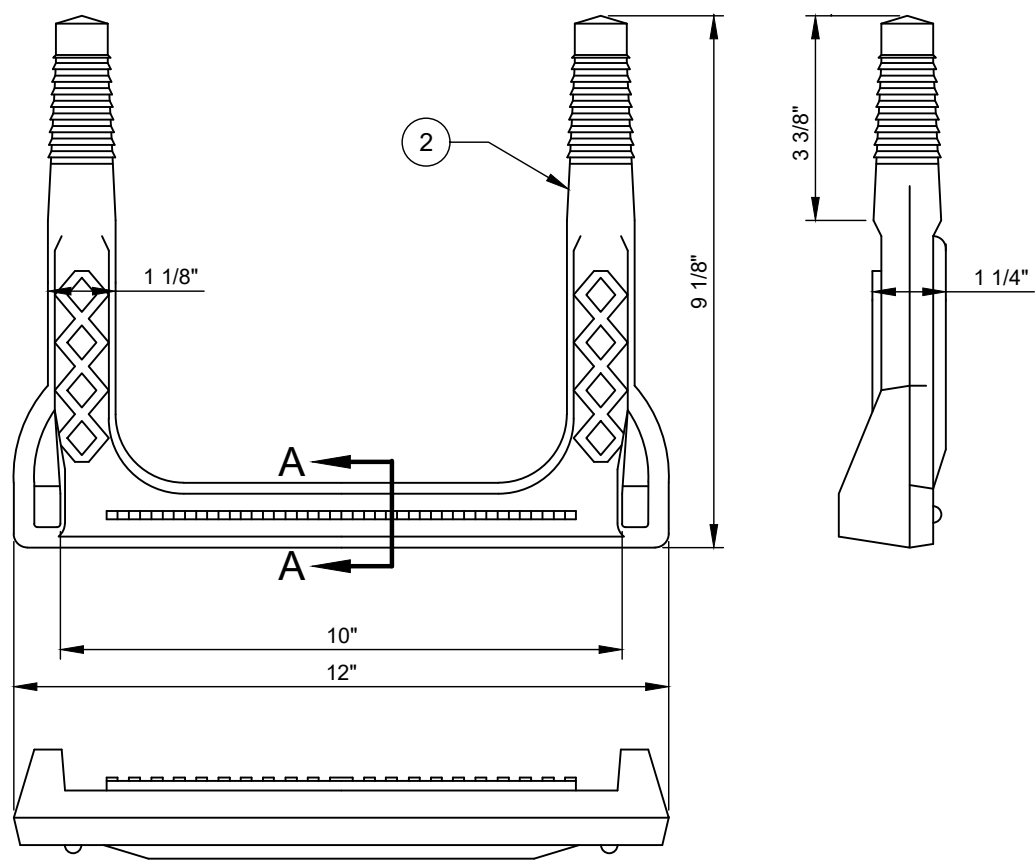
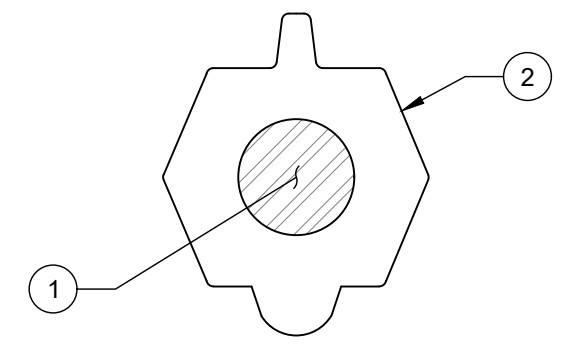


NO.	DESCRIPTION:
1.	1/2" GRADE 60 STEEL REINFORCEMENT.
2.	COPOLYMER POLYPROPYLENE PLASTIC.

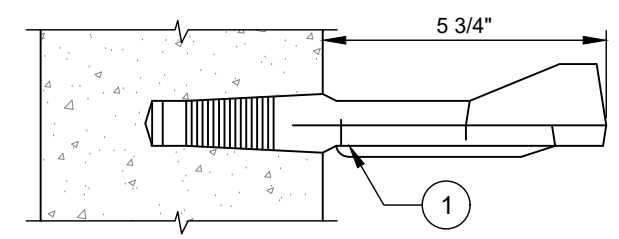
- NOTES:**
- A. MANHOLES STEPS SHALL BE MODEL PS1-PF AS MANUFACTURED BY MA INDUSTRIES, ML-10-NCR BY AMERICAN STEP COMPANY, 93810R BY BOWCO INDUSTRIES, OR APPROVED EQUAL.
  - B. STEPS MAY BE BLACK, ORANGE, OR GLOW IN THE DARK.
  - C. STEPS ARE TO BE DRIVEN INTO TAPERED HOLES IN PRECAST MANHOLE SECTIONS. DO NOT USE AS A GROUTED-IN STEP.
  - D. MIN. RUNG WIDTH IS 10".
  - E. 1,000 LB. PULL OUT TEST REPORT REQUIRED ON EACH STEP.



PLASTIC STEP



SECTION A-A



SIDE VIEW OF STEP IN MANHOLE WALL