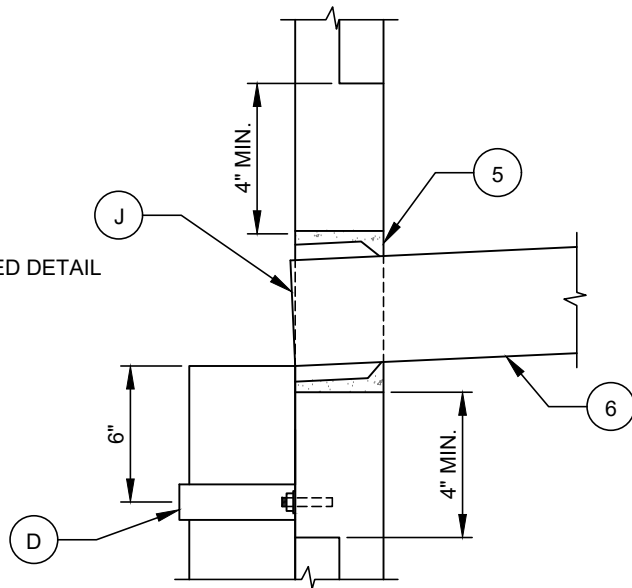
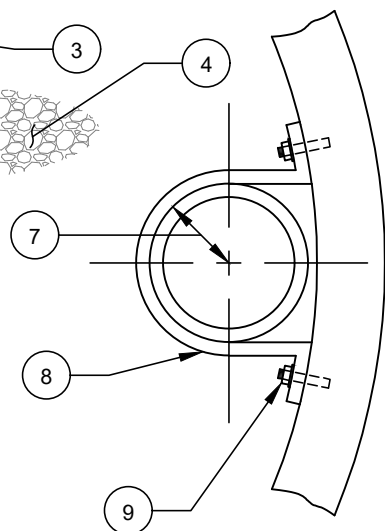


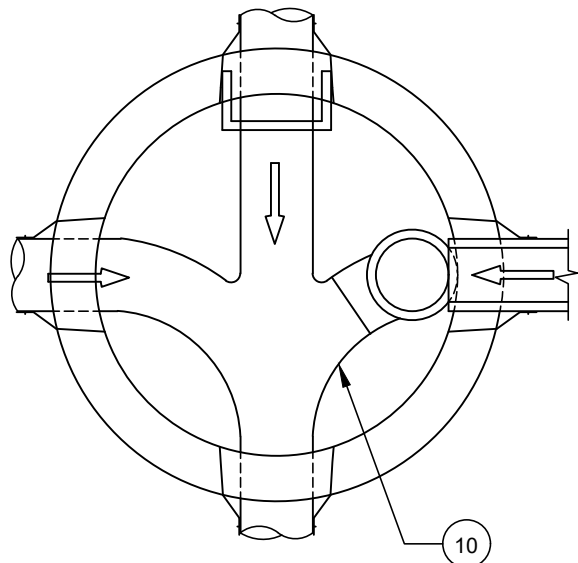
SEE ENLARGED DETAIL



**ENLARGED DETAIL**



**SECTION A-A**



**SECTION B-B**

**NO. DESCRIPTION:**

1. MANHOLE - MIN. 5' DIAMETER.
2. SCH 40 PVC VERTICAL STANDPIPE. SEE NOTE A.
3. SCH 40 PVC 90° BEND. SEE NOTE C.
4. 6" MINIMUM OF #57 STONE BASE, SUITABLE BEARING CAPACITY AS APPROVED BY GEOTECHNICAL ENGINEER.
5. RUBBER MANHOLE/PIPE CONNECTOR BOOT. GROUT IN WITH NON SHRINK GROUT.
6. MINIMUM 18" LINEAR FEET DIP OR TO UNDISTURBED SUPPORT SOIL.
7. R = 1/2 O.D. PIPE BARREL.
8. 1/4" X 2" TYPE 304 STAINLESS STEEL STRAP. STRAP SHALL PULL PIPE TIGHT AGAINST THE MANHOLE WALL.
9. 1/2" DIAMETER X 3" TYPE 316 S.S. ALL THREAD ANCHOR W/ S.S. NUT AND WASHER. USE EPOXY IN CLEANED DRILLED HOLE.
10. RESHAPE INVERT.

**NOTES:**

- A. DROP PIPE AND FITTING SHALL BE ONE PIPE SIZE LARGER THAN INFLUENT PIPE (IE. 4" INFLUENT PIPE REQUIRES 6" DROP PIPE AND FITTINGS).
- B. PVC PIPE SHALL BE SCH 40 DWV PER ASTM D2665. PVC FITTINGS SHALL BE SCH 40 DWV MOLDED FITTINGS. PVC PIPE AND FITTINGS SHALL BE SOLVENT WELD.
- C. BEND SHALL BE BELL X BELL AND SHALL REST ON CUT INTO THE BENCH. GROUT BEND INTO THE TROUGH. MATCH CROWNS UNLESS THE PIPE IS THE SAME DIAMETER. IF SAME DIAMETER, THEN A DROP OF 0.2' ACROSS INVERTS SHALL BE PROVIDED.
- D. LOCATE STRAPS AS SHOWN AT PIPE ENDS. ADD ADDITIONAL STRAPS AS NECESSARY TO MAINTAIN MAXIMUM SPACING OF 5'.
- E. HOLE IN MANHOLE WALL SHALL BE MADE USING A CORING MACHINE. INSTALL WATERTIGHT RUBBER MANHOLE PIPE CONNECTOR BOOT.
- F. CORE HOLE SHALL NOT ENTER CONE SECTION, OR PENETRATE MANHOLE JOINTS. PROVIDE A MINIMUM 4" CLEAR.
- G. STEPS SHALL BE RELOCATED IF THEY CONFLICT WITH THE DROP PIPE.
- H. CONE SECTION SHALL BE ROTATED IF NEEDED TO ALIGN STEPS. MAXIMUM OF 2 INSIDE DROPS IN A MANHOLE, UNLESS APPROVED BY CHARLOTTE WATER.
- I. MAXIMUM DROP HEIGHT SHALL BE 10'.
- J. DIP SHALL END AT THE INSIDE FACE OF THE VERTICAL STANDPIPE.