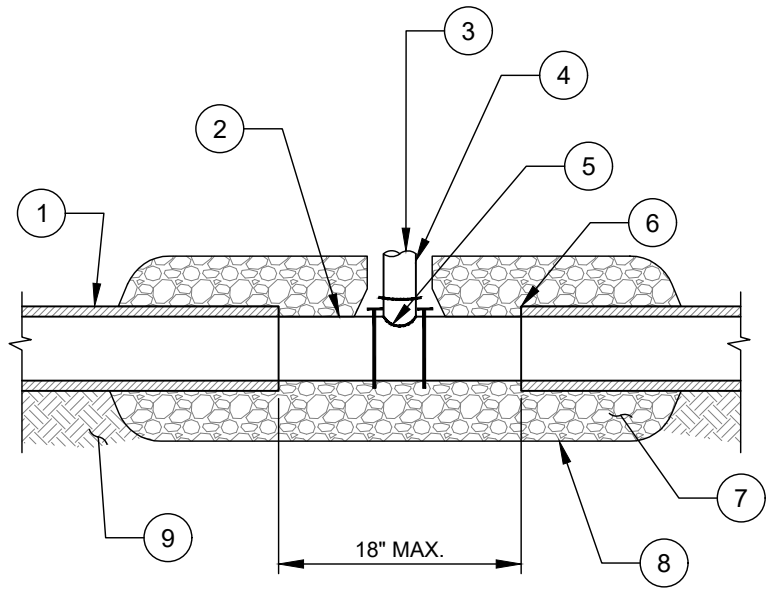


MANUFACTURER:
ROMAC INDUSTRIES, INC. ROMAC
"CB" STRAP-ON SADDLE OR
APPROVED EQUAL

- NOTES:**
- A. REFER TO THIS DETAIL TO CONNECT NEW SERVICE LATERALS AFTER THE SEWERS HAVE BEEN LINED WITH CIPP. THIS DETAIL SHALL ALSO BE USED WHEN RECONNECTING SERVICES FOLLOWING PIPE BURSTING. IN THAT SITUATION, ALL REFERENCES TO CIPP IN THIS DETAIL SHALL BE HDPE. ELECTROFUSE SADDLE MAY BE USED AS AN ALTERNATE TO THE ROMAC SADDLE.
 - B. NEATLY CUT THE EXISTING SEWER WITH A CUTTER SPECIFICALLY DESIGNED FOR CUTTING THAT SPECIFIC PIPE MATERIAL TO EXPOSE THE CIPP. FOR VCP AND CONCRETE SEWERS, USE A CHAIN CUTTER TO NEATLY SCORE THE PIPE AND THEN BREAK THE PIPE AWAY. REGARDLESS OF THE CUTTER USED, USE EXTREME CAUTION TO PREVENT DAMAGE TO THE CIPP. REPAIR ANY DAMAGE AS APPROVED BY THE ENGINEER.
 - C. ANY PROPOSED STRAP-ON SADDLE EQUAL SHALL BE SUBMITTED TO THE ENGINEER FOR REVIEW AND APPROVAL. SADDLE SHALL BE PROVIDED FOR THE SPECIFIC TYPE OF LATERAL PIPE BEING INSTALLED.
 - D. THE FOLLOWING IS APPLICABLE WHERE A LATERAL IS REPLACED WITH A NEW SERVICE (REPLACE-IN-PLACE). CAREFULLY REMOVE THE EXISTING LATERAL TO LIMIT DAMAGE TO THE CIPP, INCREASE THE OPENING IN THE CIPP AS NECESSARY AND TO PROVIDE A CIRCULAR OPENING, BRUSH THE CIPP IN THE OPENING SMOOTH TO REMOVE ALL BURRS, INSTALL STRAP-ON SADDLE, AND REPLACE LATERAL TO THE SPECIFIED LIMITS. WHERE POSSIBLE, IMPROVE THE CONFIGURATION OF THE CONNECTION. A SADDLE IS PREFERABLE TO A TEE.
 - E. IF THE CIPP IS DAMAGED FROM OVERCUTTING THE NEW SERVICE CONNECTION, THEN THE NEXT LARGER SIZE HOLE SHALL BE CUT AND A SERVICE SADDLE WITH A BELL REDUCER SHALL BE INSTALLED FOR CONNECTING BACK TO THE NEW SERVICE DIAMETER.
 - F. SUPPORT THE EXISTING SEWER DURING THE WORK AS NECESSARY.
 - G. DEFECTS IDENTIFIED FROM THE POST-CIPP CCTV INSPECTIONS SHALL BE REPAIRED BY THE CONTRACTOR TO THE SATISFACTION OF THE ENGINEER.



PLAN

NO.	DESCRIPTION:
1.	EXISTING SEWER MAIN.
2.	CURED-IN-PLACE PIPE LINING (CIPP). SEE NOTE A.
3.	INSTALL NEW SERVICE LATERAL TO LIMITS SPECIFIED.
4.	STRAP-ON SADDLE. SEE NOTES A AND C.
5.	CORE HOLE IN EXISTING CIPP. SEE NOTES A AND D.
6.	CUT EXISTING SEWER. SEE NOTE B.
7.	#57 STONE ALL AROUND (MIN. 8" ABOVE AND BELOW PIPE).
8.	EXCAVATE BELOW THE EXISTING SEWER TO COMPLETE THE WORK. SEE NOTE F.
9.	UNDISTURBED EARTH.