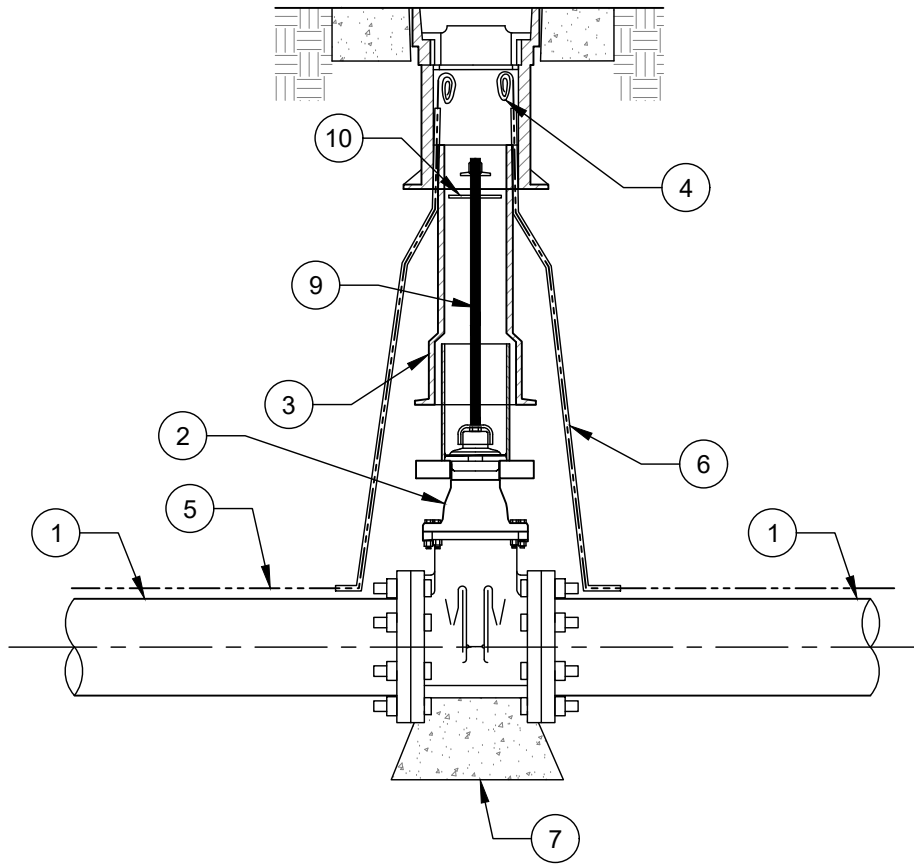


1.5"-12" PIPE

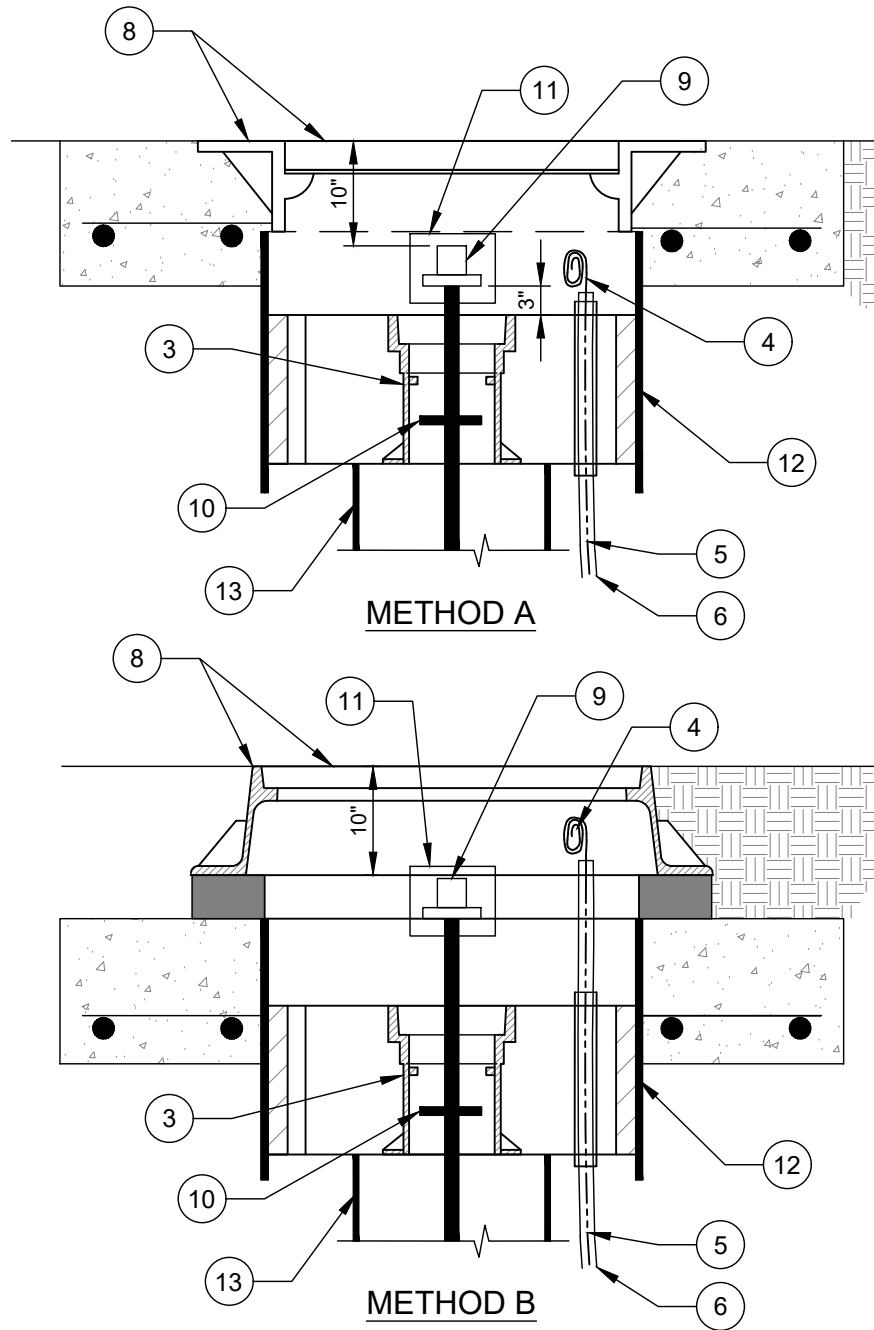


NOTES TO DESIGNER

- A. SEALING ENGINEER IS RESPONSIBLE FOR DESIGN OF PAVEMENT REPAIR AND FOR A DESIGN THAT DOES NOT ALLOW LOADING TRANSFER TO VALVE.
- B. SEALING ENGINEER TO SPECIFY SIZE OF BEARING PAD BASED ON GEOTECHNICAL REPORT OF SOIL CONDITIONS.

16" AND LARGER PIPE

(USE FRAME AND COVER)



NO. DESCRIPTION:

1. WATER MAIN.
2. GATE VALVE (OR BALL VALVE, AS APPLICABLE) FOR 1.5"-2" WATER LINES.
3. VALVE BOX ASSEMBLY - SEE CLTW STANDARD DETAIL.
4. TRACER WIRE TERMINATION WITH 24" NEATLY COILED WIRE.
5. TRACER WIRE - CONTINUOUS AWG #12 GAUGE SOLID COPPER HDPE INSTALLATION TRACER WIRE WITH 30 MILS BLUE INSULATION.
6. ALL VERTICAL WIRE SHALL BE PLACED IN 1/4" OR 3/8" ID CONDUIT SDR 9 PEX TUBING - ASTM F876 (TYP.).
7. CONCRETE BEARING BLOCK FOR 10-INCH AND LARGER GATE VALVES. POLYETHYLENE WRAP BARRIER SHALL BE PRESENT BETWEEN BEARING BLOCK AND VALVE. WRAP SHALL BE MINIMUM TWO LAYERS OF 4 MILS THICK HDCLPE.
8. FRAME AND COVER. REFER TO APPROPRIATE STANDARD DETAILS.
9. EXTENSION STEM ASSEMBLY. SEE APPROPRIATE STANDARD DETAIL.
10. CENTERING COLLAR.
11. VALVE LOCK BOX - FURNISHED BY CLTWATER.
12. 24" PVC PIPE - C905 - DR18, OR DIP - CAST IN.
13. 12" (MIN.) DIP (OR C900 PVC0 RISER PIPE 20" MAXIMUM).

NOTES:

- A. MJ ADAPTER KIT SHALL INCLUDE BOLTS AND NUTS, GRADE 3 OR HIGHER.
- B. CLTW ALLOWS THE INSTALLATION OF DIFFERENT PIPE MATERIALS ON EITHER SIDE OF THE GATE VALVE. INSTALL TRANSITIONS PER APPROPRIATE STANDARD DETAIL.
- C. IF VALVE OPERATING NUT IS MORE THAN 3' BELOW FINISHED GRADE, PROVIDE EXTENSION STEM WITH STANDARD 2" SQUARE OPERATING NUT IN TOP SECTION OF VALVE BOX. SEE STANDARD DETAIL.