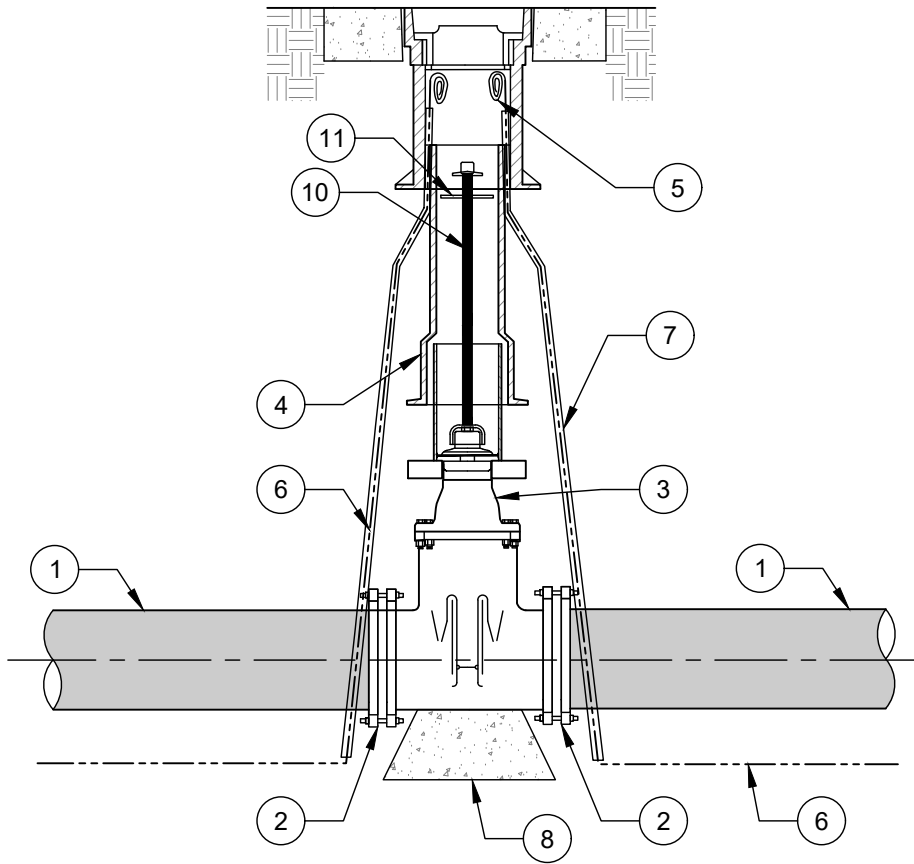


1.5"-12" PIPE

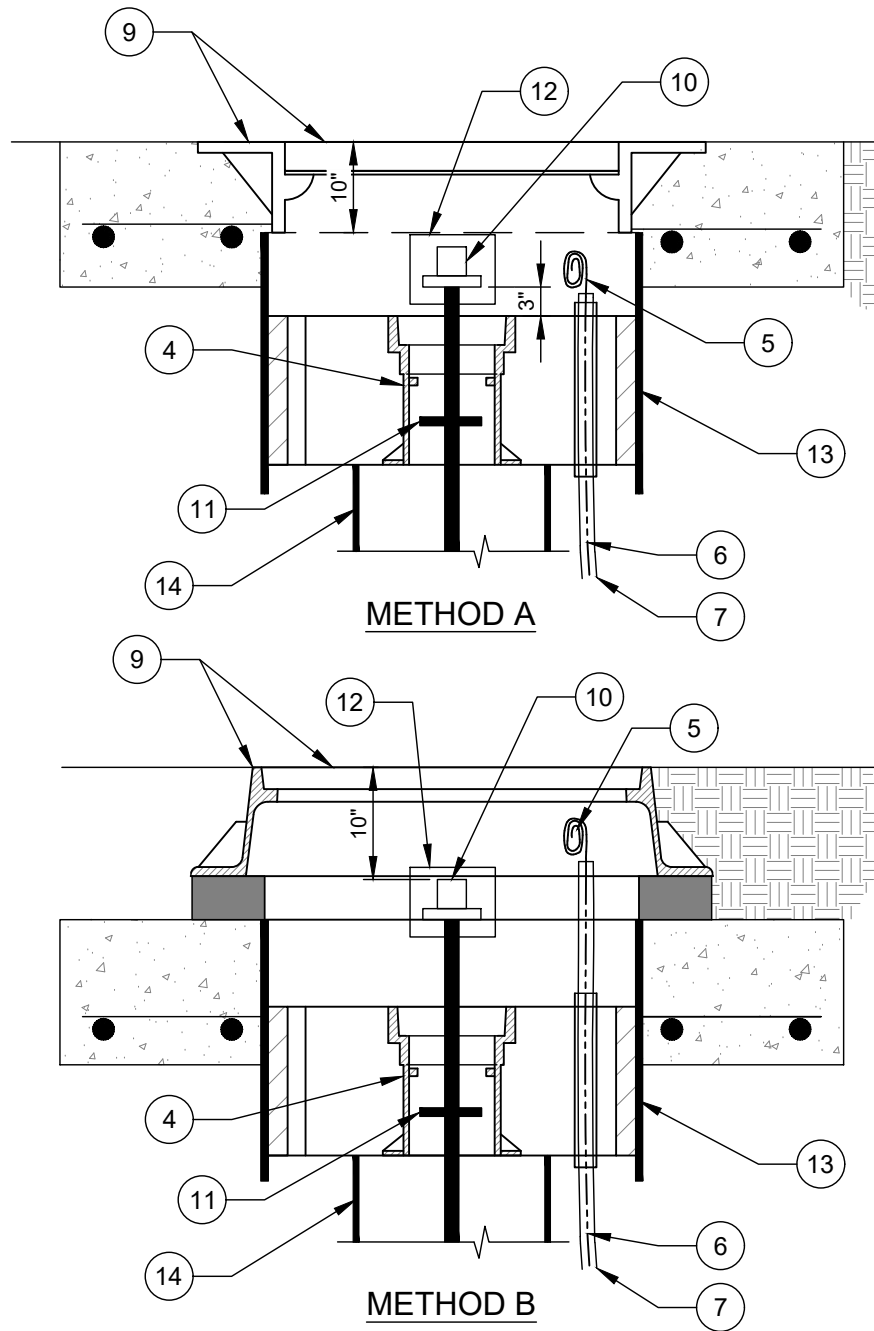


NOTES TO DESIGNER

- A. SEALING ENGINEER IS RESPONSIBLE FOR DESIGN OF PAVEMENT REPAIR AND FOR A DESIGN THAT DOES NOT ALLOW LOADING TRANSFER TO VALVE.
- B. SEALING ENGINEER TO SPECIFY SIZE OF BEARING PAD BASED ON GEOTECHNICAL REPORT OF SOIL CONDITIONS.

16" AND LARGER PIPE

(USE FRAME AND COVER)



NO. DESCRIPTION:

1. HDPE WATER MAIN.
2. BUTT FUSED JOINT OR RESTRAINED MJ ADAPTER WITH STAINLESS STEEL STIFFENER AND ACCESSORY KIT. SEE APPROPRIATE STANDARD DETAIL FOR TRANSITION.
3. GATE VALVE/BALL VALVE.
4. VALVE BOX ASSEMBLY - SEE CLTW STANDARD DETAIL.
5. TRACER WIRE TERMINATION WITH 24" NEATLY COILED WIRE.
6. TRACER WIRE - CONTINUOUS AWG #12 GAUGE SOLID COPPER TRACER WIRE WITH 30 MILS THICK BLUE HDPE INSULATION.
7. ALL VERTICAL WIRE SHALL BE PLACED IN 1/4" OR 3/8" ID CONDUIT SDR 9 PEX TUBING - ASTM F876 (TYP.).
8. CONCRETE BEARING BLOCK FOR 10-INCH AND LARGER GATE VALVES. POLYETHYLENE WRAP BARRIER SHALL BE PRESENT BETWEEN BEARING BLOCK AND VALVE. WRAP SHALL BE MINIMUM TWO LAYERS OF 4 MILS THICK HDCLPE.
9. FRAME AND COVER. REFER TO APPROPRIATE STANDARD DETAILS.
10. EXTENSION STEM ASSEMBLY. SEE APPROPRIATE STANDARD DETAIL.
11. CENTERING COLLAR.
12. VALVE LOCK BOX - FURNISHED BY CLTWATER.
13. 24" PVC PIPE - C900 - DR19, OR DIP - CAST IN.
14. 12" (MIN.) DIP (OR C900 PVC) RISER PIPE 20" MAXIMUM.

NOTES:

- A. MJ ADAPTER KIT SHALL INCLUDE BOLTS AND NUTS, GRADE 3 OR HIGHER AND LONG ENOUGH TO ACCOMMODATE THE ADDED LENGTH OF HDPE FITTING TO ATTACH TO VALVES.
- B. CLTW ALLOWS THE INSTALLATION OF DIFFERENT PIPE MATERIALS ON EITHER SIDE OF THE GATE VALVE. INSTALL TRANSITIONS PER APPROPRIATE STANDARD DETAIL FOR HDPE.
- C. IF VALVE OPERATING NUT IS MORE THAN 3' BELOW FINISHED GRADE, PROVIDE EXTENSION STEM WITH STANDARD 2" SQUARE OPERATING NUT IN TOP SECTION OF VALVE BOX. SEE STANDARD DETAIL.