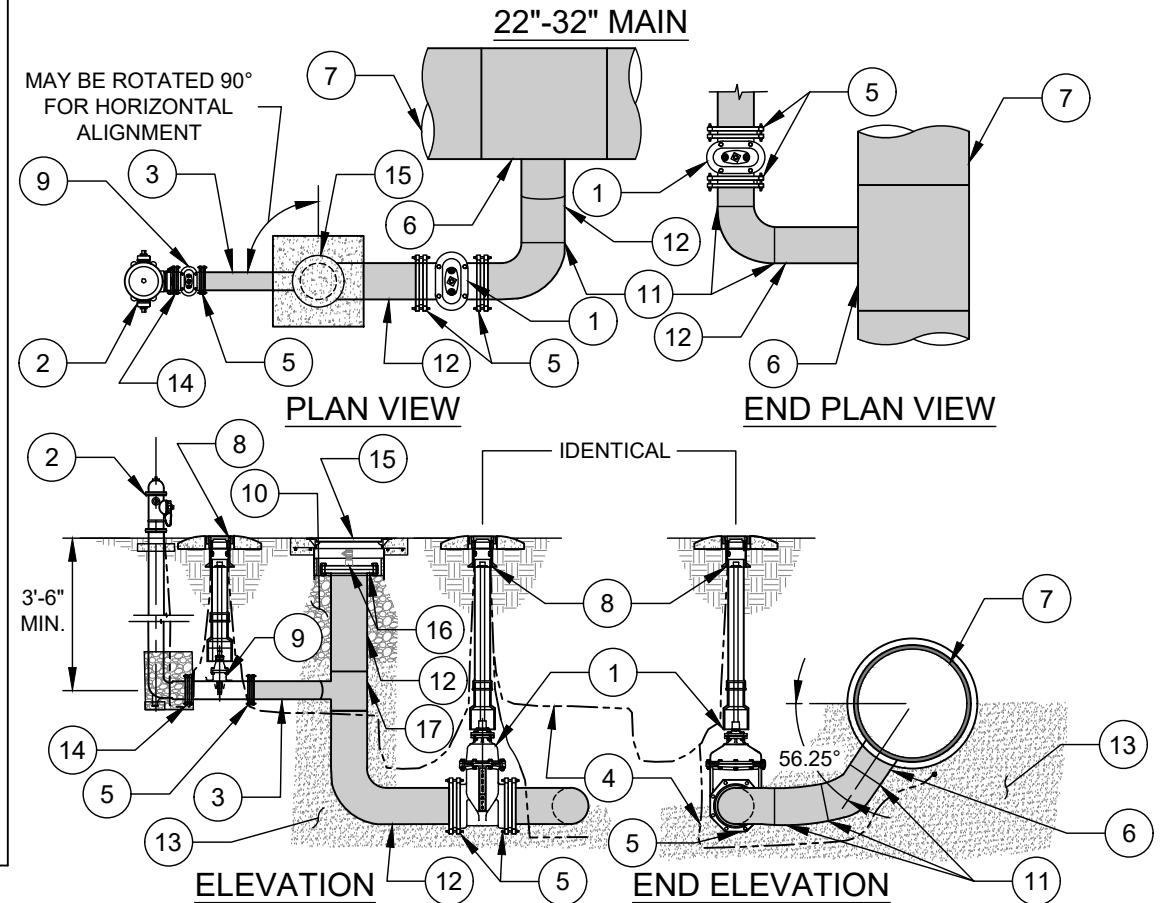
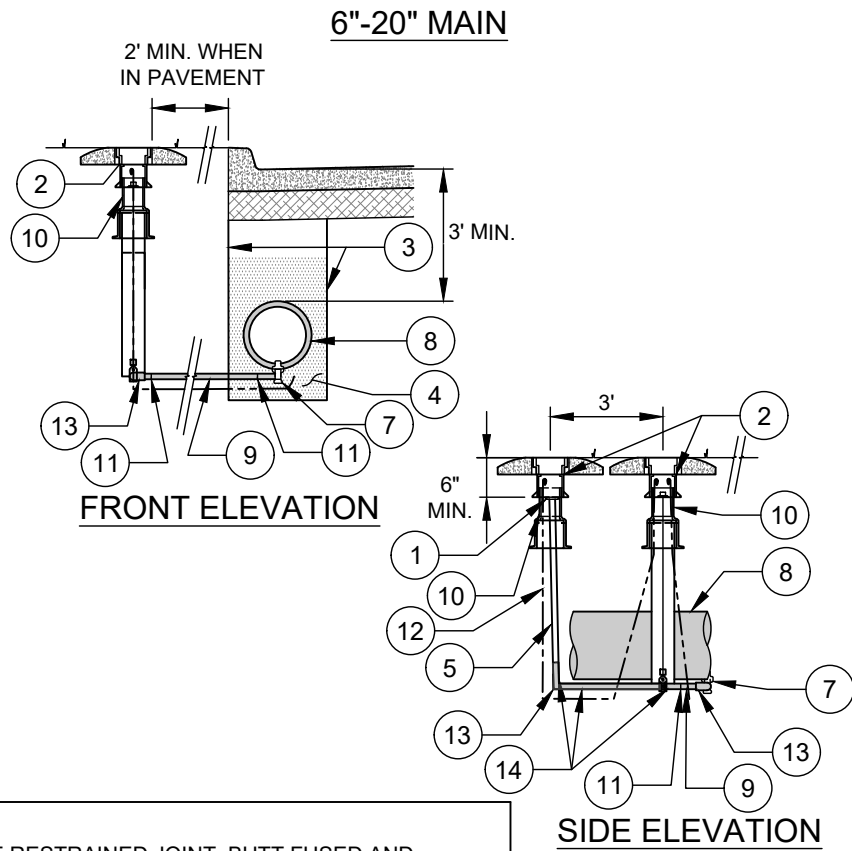


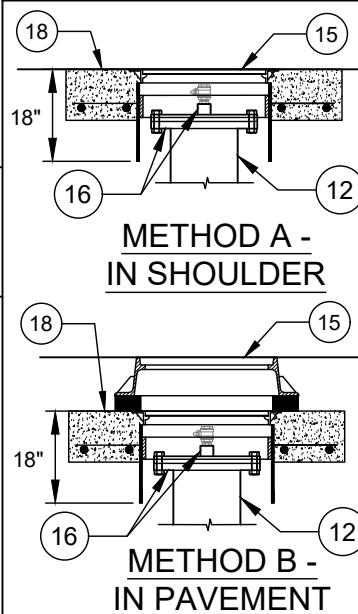
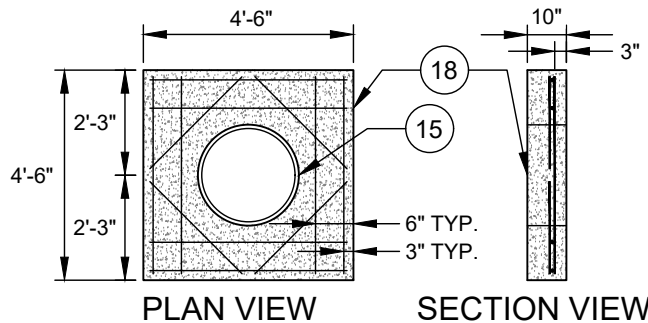
- NO. DESCRIPTION:**
- 2" NPT CAP (HAND TIGHT).
  - VALVE BOX (TOP SECTION) - ASSEMBLY.
  - TRENCH LIMITS.
  - HDPE EMBEDMENT MATERIAL.
  - 2" RED BRASS NIPPLE - SCH 40 - (MNPT X MNPT).
  - 2" GATE VALVE (FNPT X FNPT).
  - HDPE TAPPING TEE BY ELECTROFUSION ONLY.
  - HDPE WATER MAIN.
  - 2" SDR-9 HDPE PIPE (IPS).
  - VALVE BOX ASSEMBLY. SEE STANDARD DETAIL.
  - HDPE BUTT FUSION JOINT.
  - TRACER WIRE-CONTINUOUS AWG #12 GAUGE SOLID COPPER TRACER WIRE WITH 30 MILS THICK BLUE HDPE INSULATION.
  - 2" SDR-9 HDPE 90° BEND.
  - 2" HDPE PLAIN END X S.S. MNPT ADAPTOR.



- NOTES:**
- ALL PIPE, FITTINGS, ETC. SHALL BE RESTRAINED JOINT. BUTT FUSED AND ELECTROFUSED HDPE IS FULLY RESTRAINED.
  - ALL VALVES OPEN RIGHT (CLOCKWISE).
  - SEE CONSTRUCTION PLANS FOR EXACT LOCATIONS OF VALVES, CLTW ACCESS POINT, AND FIRE HYDRANT.
  - HYDRANT EXTENSIONS SHALL BE LIMITED TO 1 EACH PER FIRE HYDRANT.
  - SEE FIRE HYDRANT STD DETAIL FOR INSTALLATION REQUIREMENTS.

- NOTES TO DESIGNER**
- BLOW OFFS TO BE INSTALLED AT LOW POINTS IF REQUIRED BY SEALING ENGINEER.
  - VALVE AND B.O. SHALL NOT BE PLACED IN ROAD DITCH.

**CONCRETE PAD DETAIL**



- NO. DESCRIPTION:**
- 12" GATE VALVE. SEE STANDARD DETAIL.
  - STANDARD FIRE HYDRANT ASSEMBLY PER STANDARD DETAIL.
  - 6" HDPE PIPE.
  - TRACER WIRE - CONTINUOUS AWG #12 GAUGE SOLID COPPER TRACER WIRE WITH 30 MILS THICK BLUE HDPE INSULATION.
  - MALE MJ ADAPTOR WITH STAINLESS STEEL STIFFENER AND ACCESSORY KIT. SEE STANDARD DETAIL FOR TRANSITION DETAIL.
  - HDPE TEE - 12" OUTLET.
  - HDPE WATER MAIN.
  - VALVE BOX ASSEMBLY. SEE STANDARD DETAIL.
  - 6" GATE VALVE. SEE STANDARD DETAIL.
  - #57 WASHED STONE-ENCASEMENT.
  - HDPE FITTING BUTT FUSION JOINT.
  - 12" HDPE PIPE.
  - HDPE EMBEDMENT MATERIAL.
  - FOSTER ADAPTOR.
  - 20.5" CLEAR OPENING MANHOLE FRAME AND COVER.
  - BLIND FLANGE TAPPED WITH A 2" BALL CORPORATION STOP.
  - 12" X 12" X 6" HDPE BUTT FUSED TEE.
  - PRECAST CONCRETE PAD (REINFORCED).