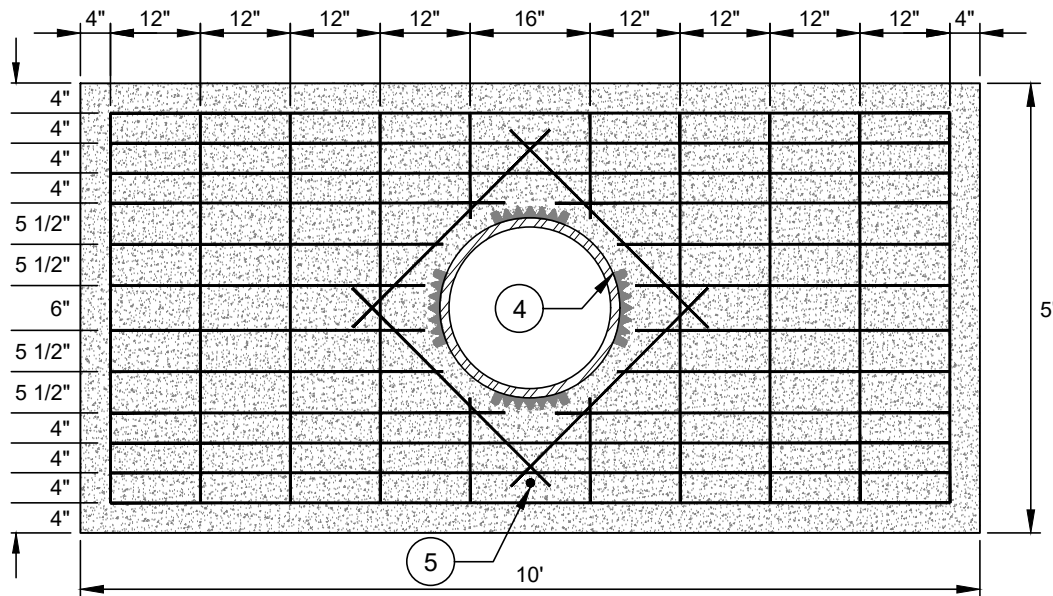
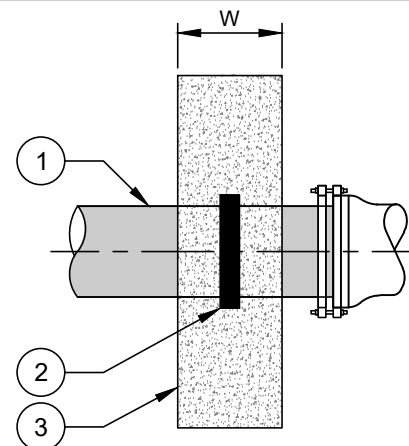


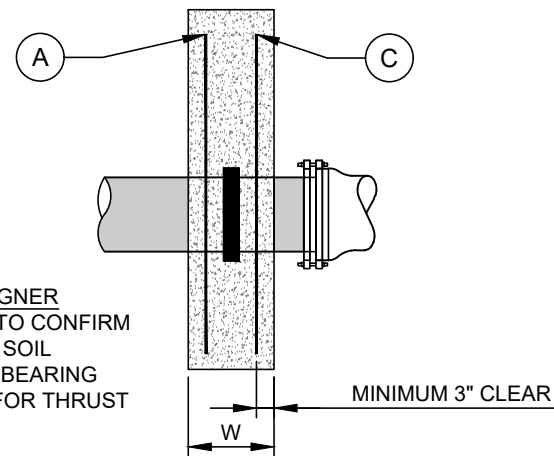
MINIMUM NUMBER OF FLEX RESTRAINTS BY PIPE SIZE	
HDPE NOMINAL PIPE SIZE (INCHES)	NUMBER OF FLEX RESTRAINTS
14	4
16	6
18	7
24	10
32	17



REBAR DETAIL: FRONT VIEW



ELEVATION VIEW



REBAR DETAIL: SIDE VIEW

NOTES TO DESIGNER
A. ENGINEER TO CONFIRM ADEQUATE SOIL PRESSURE BEARING CAPACITY FOR THRUST BLOCK.

- NO. DESCRIPTION:
1. HDPE PIPE.
 2. ELECTROFUSED HDPE FLEX RESTRAINT OR WALL ANCHOR.
 3. CONCRETE WALL BLOCKING - f_c = MINIMUM 3,600 PSI.
 4. FLEX RESTRAINTS FOR HDPE PIPE. SEE TABLE FOR REQUIRED NUMBER OF FLEX RESTRAINTS BY PIPE SIZE. COMPLY WITH MANUFACTURERS INSTRUCTIONS FOR NUMBER OF FLEX RESTRAINTS IF GREATER THAN SHOWN IN TABLE.
 5. AWG #12 GAUGE SOLID COPPER TRACER WIRE WITH BLUE 30 MIL HDPE INSULATION.

- NOTES:
- A. WHEN DIRECTED BY THE SEALING ENGINEER, THE CONCRETE WALL BLOCK SIZE MAY BE ADJUSTED, BASED ON ACTUAL SOIL CLASSIFICATION AND PIPE DIAMETER.
 - B. FLEX RESTRAINTS MUST BE RATED AT 8,000 LBS OF FORCE OR HIGHER.

- REBAR NOTES:
- a. FOR 14" TO 32" PIPE, PLACE REBAR MATS BOTH AT LOCATION "A" AND LOCATION "C" ON THE REBAR DETAIL: SIDE VIEW.

REBAR SCHEDULE			
TYPE	LENGTH (INCHES)	NUMBER REQUIRED FOR ONE MAT	NUMBER REQUIRED FOR TWO MATS
VERTICAL	52	8	16
VERTICAL	10	4	8
HORIZONTAL	112	6	12
HORIZONTAL	48	4	8
DIAGONAL	48	4	8

REBAR DIAMETER SCHEDULE				
HDPE NOMINAL PIPE DIAMETER (INCHES)	BAR SIZE	TOTAL LENGTH OF REBAR (FT)	TOTAL REBAR WEIGHT (LB) ONE MAT	TOTAL REBAR WEIGHT (LB) TWO MATS
14	#5	126	131	262
16	#5	126	131	262
18	#5	126	131	262
20	#5	126	131	262
24	#5	126	131	262
30	#7	126	257	514
32	#7	126	257	514

HDPE NOMINAL PIPE DIAMETER (INCHES)	APPROX. DEAD END THRUST AT 200 PSI WATER PRESSURE (POUNDS)	UNDISTURBED SOIL BEARING AREA (SQUARE FEET)	APPROX. SOIL BEARING LOAD (LB/SQ FT)	W MINIMUM WIDTH (INCHES)	APPROXIMATE CONCRETE VOLUME	
					(CUBIC FEET)	(CUBIC YARD)
14	20,608	30	687	14	58	2.16
16	26,915	30	897	16	67	2.47
18	34,073	30	1,136	16	67	2.47
20	42,063	30	1,402	18	75	2.78
24	60,566	30	2,019	18	75	2.78
30	94,641	30	3,155	22	92	3.40
32	107,678	30	3,589	22	92	3.40