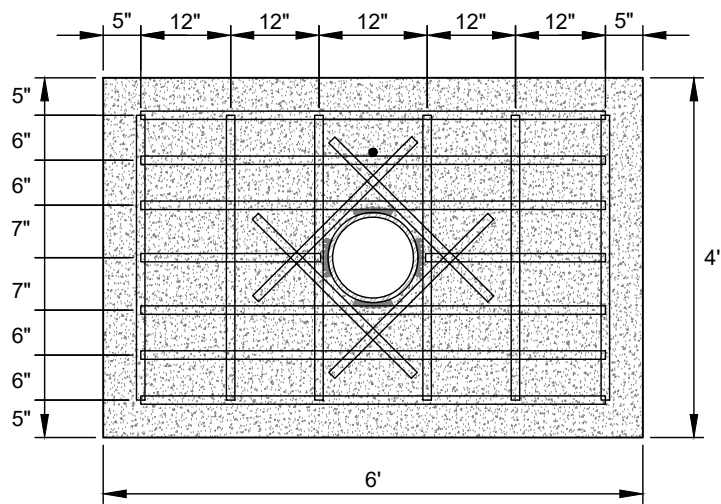
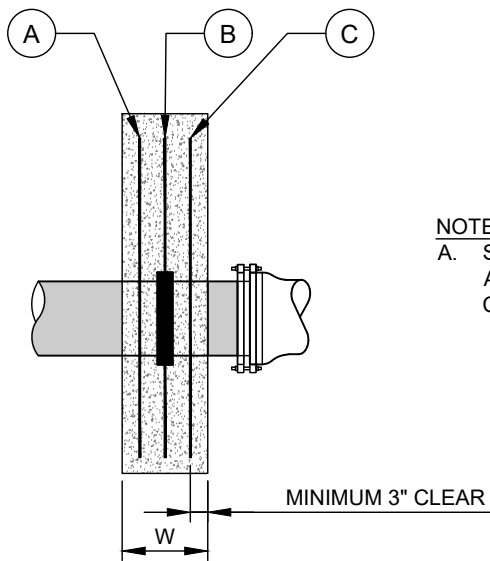


ELEVATION VIEW



REBAR DETAIL: FRONT VIEW



REBAR DETAIL: SIDE VIEW

MINIMUM NUMBER OF FLEX RESTRAINTS BY PIPE SIZE	
HDPE NOMINAL PIPE SIZE (INCHES)	NUMBER OF FLEX RESTRAINTS
4 THROUGH 8	2
10 THROUGH 12	3

NO.	DESCRIPTION:
1.	HDPE PIPE.
2.	ELECTROFUSED HDPE FLEX RESTRAINT OR WALL ANCHOR.
3.	CONCRETE WALL BLOCKING - $f_c$ = MINIMUM 3,600 PSI.
4.	FLEX RESTRAINTS FOR HDPE PIPE. SEE TABLE FOR REQUIRED NUMBER OF FLEX RESTRAINTS BY PIPE SIZE. COMPLY WITH MANUFACTURERS INSTRUCTIONS FOR NUMBER OF FLEX RESTRAINTS IF GREATER THAN SHOWN IN TABLE.
5.	AWG #12 GAUGE SOLID COPPER TRACER WIRE WITH BLUE 30 MILS HDPE INSULATION.

**NOTES:**

A. WHEN DIRECTED BY THE SEALING ENGINEER, THE CONCRETE WALL BLOCK SIZE MAY BE ADJUSTED, BASED ON ACTUAL SOIL CLASSIFICATION AND PIPE DIAMETER.

B. FLEX RESTRAINTS MUST BE RATED AT 8,000 LBS OF FORCE OR HIGHER.

**REBAR NOTES:**

a. FOR 4" TO 10" PIPE, PLACE ONE REBAR MAT AT LOCATION B ON THE REBAR DETAIL: SIDE VIEW.

b. FOR 12" PIPE, PLACE TWO REBAR MATS - ONE AT LOCATION "A" AND ONE AT LOCATION "C" ON THE REBAR DETAIL: SIDE VIEW.

**NOTES TO DESIGNER**  
 A. SEALING ENGINEER TO CONFIRM ADEQUATE SOIL PRESSURE BEARING CAPACITY FOR THRUST BLOCK.

REBAR SCHEDULE			
TYPE	LENGTH (INCHES)	NUMBER REQUIRED FOR ONE MAT	NUMBER REQUIRED FOR TWO MATS
VERTICAL	38	6	12
HORIZONTAL	62	6	12
DIAGONAL	30	4	8
HORIZONTAL	24	2	4

REBAR DIAMETER SCHEDULE				
HDPE NOMINAL PIPE DIAMETER (INCHES)	BAR SIZE	TOTAL REBAR LENGTH (FT)	TOTAL REBAR WEIGHT (LB) ONE MAT	TOTAL REBAR WEIGHT (LB) TWO MATS
4	#5	64	67	134
6	#5	64	67	134
8	#5	64	67	134
10	#5	64	67	134
12	#5	64	67	134

HDPE NOMINAL PIPE DIAMETER (INCHES)	APPROX. DEAD END THRUST AT 200 PSI WATER PRESSURE TOTAL THRUST (POUNDS)	UNDISTURBED SOIL BEARING AREA (SQUARE FEET)	APPROX. SOIL PRESSURE BEARING LOAD (LB/SQ FT)	W MINIMUM WIDTH (INCHES)	APPROXIMATE CONCRETE VOLUME	
					(CUBIC FEET)	(CUBIC YARD)
4	2,130	15	142	10	20	0.74
6	4,616	15	308	10	20	0.74
8	7,823	15	522	12	24	0.89
10	12,153	15	810	12	24	0.89
12	17,094	15	1,140	14	28	1.04