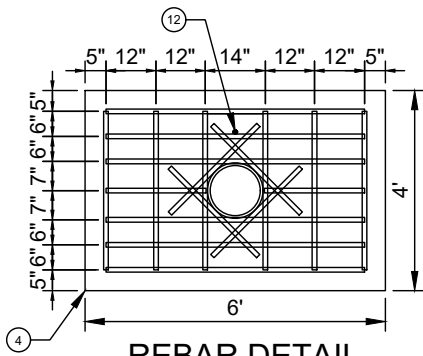
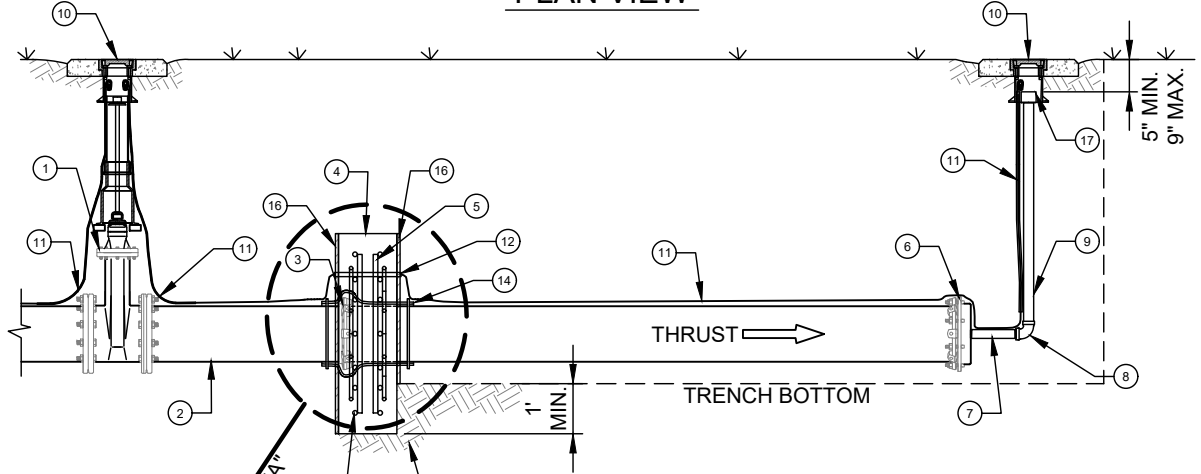


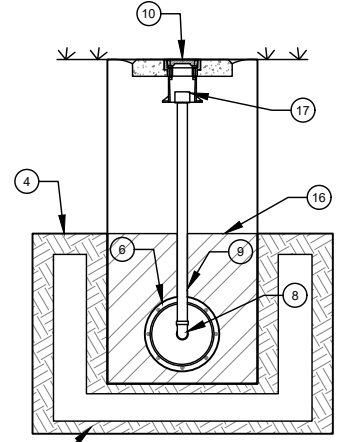
PLAN VIEW



REBAR DETAIL



ELEVATION VIEW



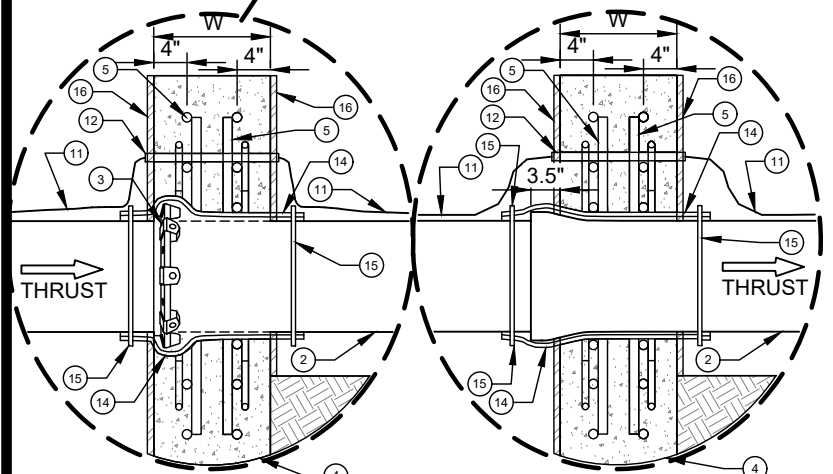
END VIEW

NO. DESCRIPTION:

1. END OF LINE GATE VALVE (MJ X MJ).
2. DIP - (PE X PE) - REMOVE BELL - LENGTH = 19 FT.
3. WEDGE ACTION THRUST RESTRAINT GLAND.
4. CONCRETE WALL BLOCK (f<sub>c</sub> = 3,600 PSI MIN.) 6' X 4' X WIDTH (W).
5. REBARS - GRADE 60 PER ASTM A615 - SEE REBAR SCHEDULES.
6. MJ CAP - WITH WEDGE ACTION RESTRAINT GLAND, TAP 2" THREADED OUTLET (FNPT).
7. 2" RED BRASS (OR STAINLESS STEEL (S.S.)) NIPPLE SCH 40 (MNPT X MNPT) - LENGTH = 12 INCH.
8. 2" RED BRASS (OR S.S.) 90° BEND (FNPT X FNPT).
9. 2" RED BRASS (OR S.S.) NIPPLE SCH 40 (MNPT X MNPT) - LENGTH AS REQUIRED.
10. STANDARD VALVE BOX ASSEMBLY - SEE DETAIL.
11. AWG #12 GAUGE COPPER TRACER WIRE - WITH BLUE INSULATION (30 MILS HDPE) TERMINATE WITH 24" EXCESS WIRE (COILED) IN VALVE BOX (TYP.).
12. 1" SCH 40 PVC ELECTRICAL CONDUIT - LENGTH AS REQUIRED.
13. UNDISTURBED SOIL.
14. HIGH DENSITY CROSS LAMINATED POLYETHYLENE FILM TUBE (HDCLPE) AWWA C105 - 4 MILS EACH X 2 LAYER - 8 MILS TOTAL.
15. HDPE ADHESIVE TAPE OR HDPE ZIP LOCK TIES.
16. PLYWOOD FORM.
17. 2" SCH. 40 RED BRASS OR 2" DUCTILE IRON (FUSION BONDED EPOXY COATED) THREADED COUPLING (FNPT) OR S.S. THREADED COUPLING.

NOTES:

- A. WHEN DIRECTED BY THE ENGINEER, THE CONCRETE WALL BLOCK SIZE MAY BE ADJUSTED, BASED ON ACTUAL SOIL CLASSIFICATION AND PIPE DIAMETER.
- B. FULLY RESTRAINED JOINT PIPE MAY BE USED IN LIEU OF THIS DETAIL AS CALCULATED BY ENGINEER. LENGTH OF RESTRAINT SHALL BE BASED UPON ACTUAL SOIL CONDITIONS. LENGTH OF RESTRAINT SHALL BE CALLED OUT ON PLANS - SEE RESTRAINED JOINT PIPE DETAILS.
- C. ALTERNATE DETAIL "A" (USING A REVERSED BELL) MAY BE USED IN LIEU OF DETAIL "A".



DETAIL "A"

DETAIL "A" (ALT)

APPROX. DEAD END THRUST (DIPRA) AT 200 PSI WATER PRESSURE		UNDISTURBED SOIL BEARING AREA SQUARE FEET	APPROX. SOIL PRESSURE BEARING LOAD (LB/SQ FT)	W (WIDTH) (MINIMUM) INCHES	CONCRETE VOLUME (APPROXIMATE)	
PIPE DIAMETER (INCHES)	TOTAL THRUST (POUNDS)				FT <sup>3</sup>	CY
6	7,478	15	499	10	20	0.74
8	12,866	15	858	12	24	0.89
10	19,354	15	1,290	12	24	0.89
12	27,370	15	1,825	14	28	1.04

REBAR SCHEDULE		
TYPE	LENGTH (INCHES)	NUMBER REQUIRED
VERTICAL	38	6
HORIZONTAL	62	6
HORIZONTAL	24	2
DIAGONAL	30	4

REBAR DIAMETER SCHEDULE				
PIPE DIAMETER	BAR SIZE	TOTAL REBAR LENGTH (FT)	TOTAL REBAR WEIGHT (LB) ONE MAT	TOTAL REBAR WEIGHT (LB) TWO MATS
6"	#5	64	67	134
8"	#5	64	67	134
10"	#5	64	67	134
12"	#5	64	67	134

