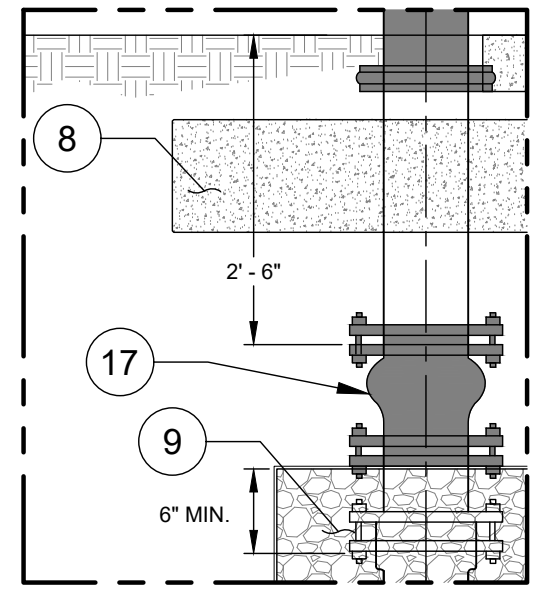


NOTES:

- A. HYDRANT LOCATION: ON ROADS WITH CURB AND GUTTER, USE EXISTING CLTW STANDARD DETAIL FOR FIRE HYDRANTS IN ALL CASES UNLESS OTHERWISE NOTED BY THE ENGINEER.
- B. HYDRANT BURIAL TO BE MINIMUM 3'-6" UNLESS OTHERWISE APPROVED BY THE ENGINEER.
- C. EXTENSIONS REQUIRED AS APPROVED BY THE ENGINEER. NO MORE THAN ONE HYDRANT EXTENSION IS ALLOWED. IF EXTENSION IS USED, DO NOT CAST HYDRANT COLLAR ON EXTENSION JOINT.
- D. ON ROADS WITHOUT SIDE DITCH OR CURB, HYDRANT SHALL BE LOCATED ONE FOOT INSIDE THE ROAD RIGHT OF WAY OR 1 FT OUTSIDE THE DOT CLEAR RECOVERY ZONE.
- E. ON ROADS WITH SIDE DITCH, FIRE HYDRANT SHALL BE LOCATED A MINIMUM OF FOUR FEET BACK OF SIDE DITCH CENTERLINE.



OPTIONAL

NO. DESCRIPTION:

- 1. WATER MAIN.
- 2. DIP WITH MJ RESTRAINED JOINTS.
- 3. FOSTER ADAPTER.
- 4. CONCRETE BLOCK - 8" X 16" SOLID CONCRETE BLOCK.
- 5. RESILIENT SEAT GATE VALVE WITH CONCRETE SUPPORT.
- 6. FOR CONNECTION TO NEW CONSTRUCTION, REFER TO APPROPRIATE STANDARD DETAIL. FOR CONNECTION TO EXISTING MAIN, REFER TO APPROPRIATE STANDARD DETAIL.
- 7. VALVE BOX ASSEMBLY - SEE CLTW STANDARD DETAIL.
- 8. CONCRETE LATERAL THRUST COLLAR. CAST IN PLACE. 3' DIAMETER BY 8" THICK. REINFORCE WITH #4 REBARS.
- 9. MINIMUM 9 CUBIC FEET OF #57 WASHED STONE PROPORTIONALLY AROUND BASE. DO NOT COVER WEEP HOLE. ENCAPSULATE FILTER FABRIC AROUND WASHED STONE.
- 10. STANDARD HYDRANT PER CLTW SPECIFICATIONS.
- 11. SEE CLTW TRACER WIRE STANDARD DETAILS FOR TERMINATION METHOD.
- 12. AWG #12 GAUGE SOLID COPPER TRACER WIRE WITH BLUE 30 MILS HDPE INSULATION.
- 13. ALL VERTICAL WIRE SHALL BE PLACED IN 1/4" OR 3/8" ID CONDUIT SDR 9 PEX TUBING - ASTM F876 (TYP.).
- 14. EXTENSION KIT FROM FIRE HYDRANT MANUFACTURER.
- 15. STREET OR DRIVEWAY.
- 16. CURB/PAVEMENT RADIUS POINT.
- 17. VERTICAL FLANGE SHOE (OPTIONAL).