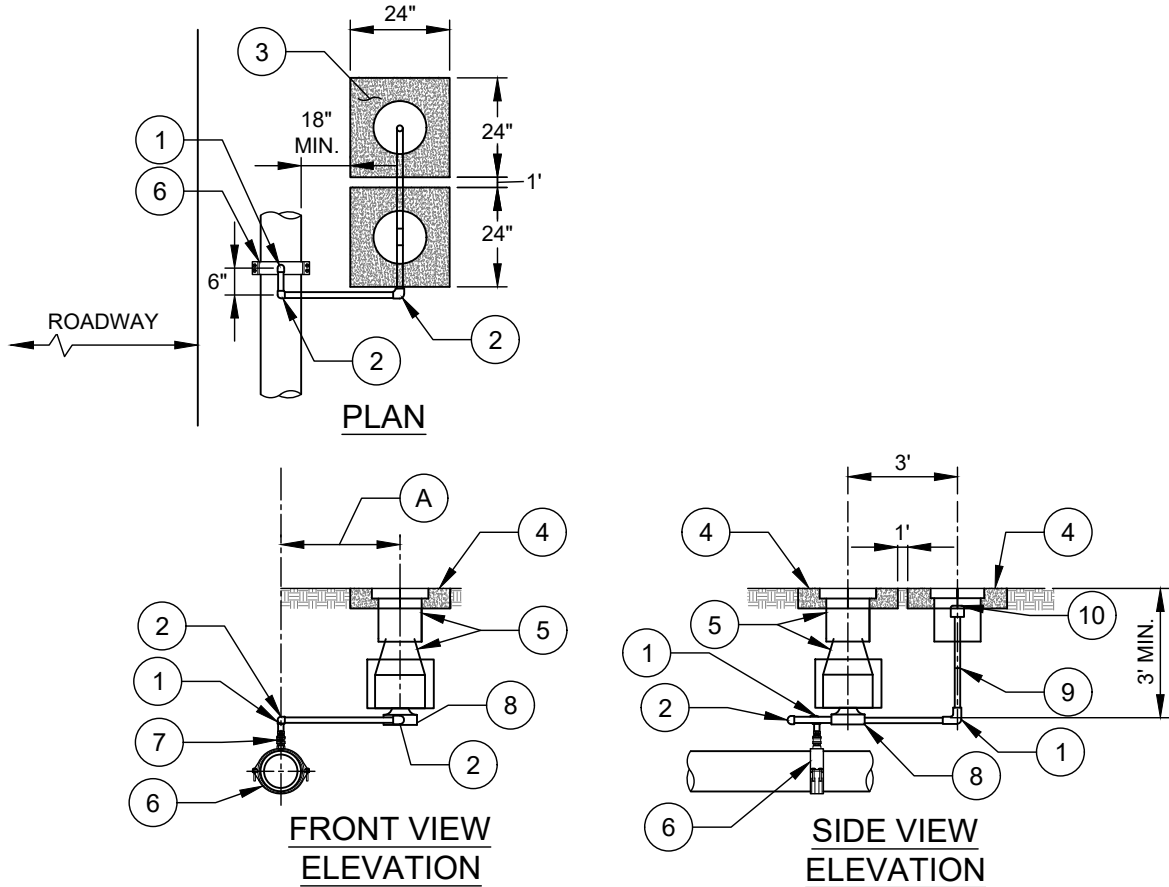


16" AND SMALLER MAIN



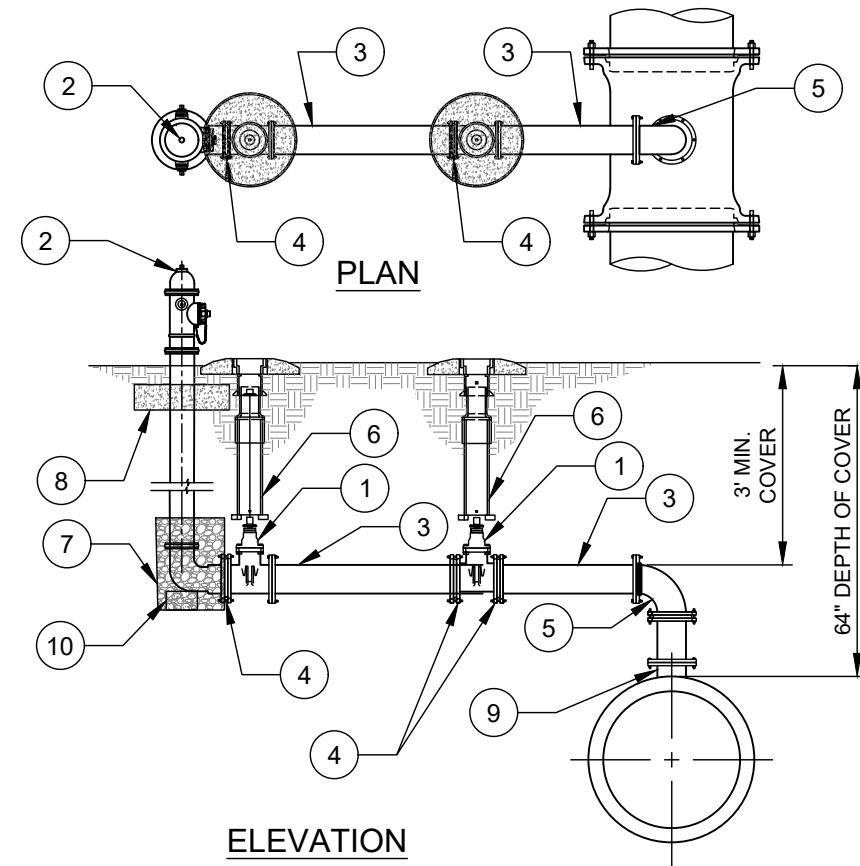
NO. DESCRIPTION:

1. 90° VERTICAL BEND - BRASS OR S.S..
2. 90° HORIZONTAL BEND - BRASS OR S.S..
3. (2)-24" PADS OR PRECAST 24" CIRCULAR PADS.
4. 24" X 24" X 6" CONCRETE PAD VALVE OR 24" DIAMETER PRECAST PAD.
5. VALVE BOX ASSEMBLY. SEE STANDARD DETAIL.
6. 2" SERVICE SADDLE W/ CC TAPER TREAD OUTLET.
7. 2" BALL CORPORATION STOP WITH TEE HEAD OPERATING NUT.
8. 2" GATE VALVE FOR 2" AIR RELEASE.
9. 2" PIPING - SCHEDULE 40 RED BRASS OR STAINLESS STEEL.
10. 2" DUCTILE IRON (FUSION BONDED EPOXY COATED) THREADED COUPLING (FNPT).

NOTES:

- A. ARV TO BE PLACED A MIN. OF 18" OFFSET FROM THE WATER MAIN, AND SHALL BE BOC, IN PLANTING STRIP OR IN ROAD SHOULDER OR SIDEWALK, AND WITH VALVE BOX ASSEMBLIES PARALLEL TO THE ROAD.
- B. AIR RELEASES TO BE INSTALLED AT ALL HIGH POINTS AS DIRECTED BY THE ENGINEER.
- C. AIR RELEASE SHALL NOT BE LOCATED IN ROADWAY PAVEMENT.
- D. ON 16" AND SMALLER PIPE, 2" ASSEMBLY REQUIRED.
- E. ON 24" TO 30" PIPE, USE 6" AIR RELEASE HYDRANT. AT LEAST TWO VALVES REQUIRED - ONE AT TEE AND ONE AT. SEE ASSEMBLY ON RIGHT.
- F. VALVE & B.O. SHALL NOT BE PLACED IN ROAD DITCH.
- G. TRACER WIRE INSTALLED PER CLTW TRACER WIRE DETAIL AS APPLICABLE.

24"-30" MAIN



NO. DESCRIPTION:

1. 6" MJ X MJ GATE VALVE.
2. STANDARD 3 WAY FIRE HYDRANT ASSEMBLY PER STANDARD DETAIL (PAINTED BLUE).
3. 6" RJ DIP.
4. FOSTER ADAPTER.
5. 6" RMJ 90° BEND (VERTICAL).
6. VALVE BOX ASSEMBLY. SEE STANDARD DETAIL.
7. #57 WASHED STONE-ENCASEMENT.
8. CONCRETE HYDRANT COLLAR. CAST IN PLACE. 3' DIAMETER BY 8" THICK. REINFORCE WITH #4 REBARS.
9. 6" SWIVEL OUTLET FIRE HYDRANT TEE.
10. CONCRETE BLOCK - 8" X 16" SOLID CONCRETE BLOCK.

NOTES:

- A. AIR RELEASE HYDRANT SHALL BE PLACED PER THE FIRE HYDRANT STANDARD DETAIL REQUIREMENTS.
- B. AIR RELEASES TO BE INSTALLED AT ALL HIGH POINTS AS DIRECTED BY THE ENGINEER.
- C. ON 24" AND 30" PIPE, USE 6" AIR RELEASE HYDRANT.
- D. TRACER WIRE INSTALLED PER CLTW TRACER WIRE DETAIL AS APPLICABLE.
- E. SEE FIRE HYDRANT STD DETAIL FOR INSTALLATION REQUIREMENTS.
- F. HYDRANT EXTENSIONS SHALL BE LIMITED TO 1 EACH PER HYDRANT.