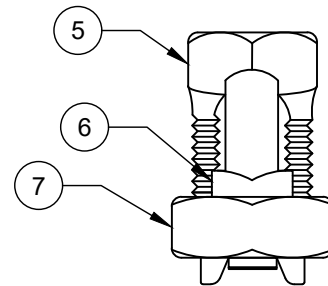
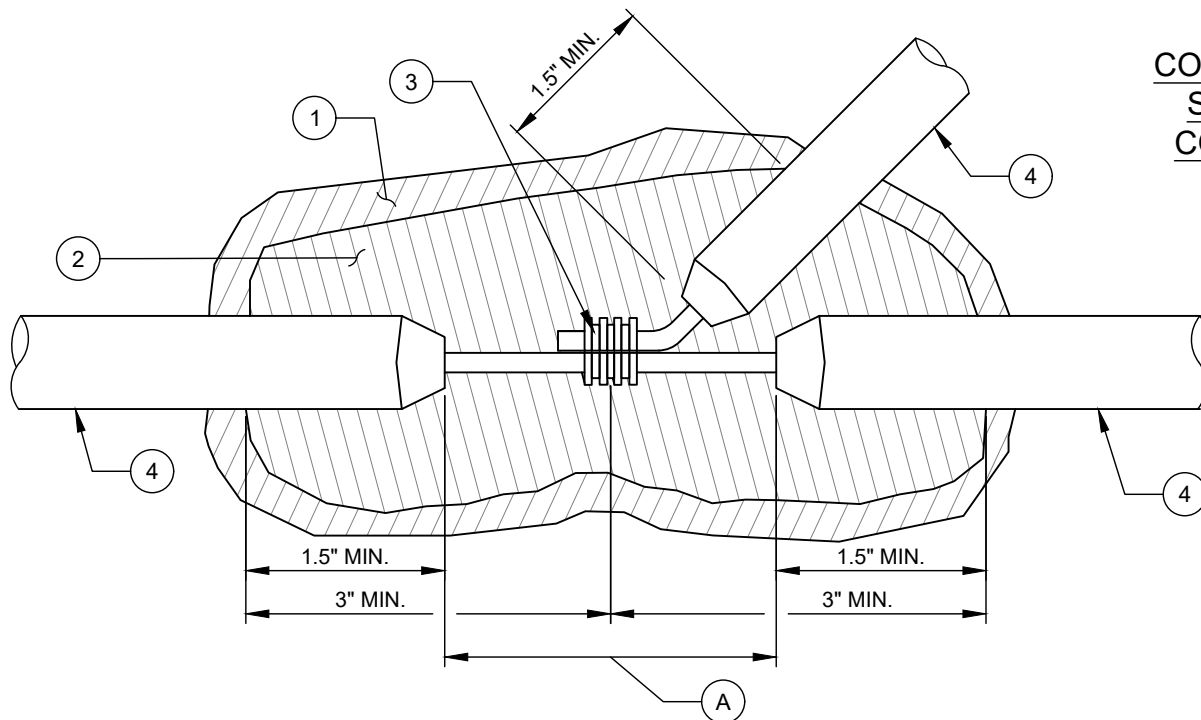


**IN-LINE OR REPAIR SPLICE**



**COPPER ALLOY  
SPLIT BOLT  
CONNECTOR**



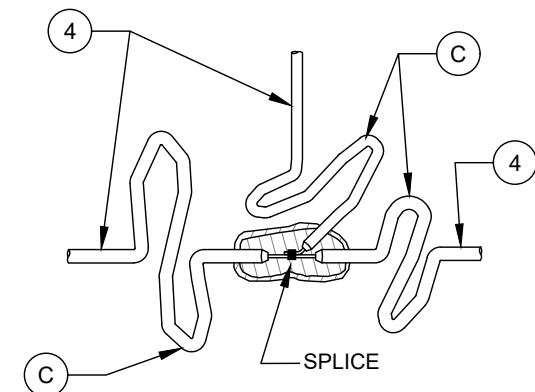
**BRANCH IN-LINE SPLICE FOR SERVICE/LATERAL, TEE,  
CROSS OR AIR RELEASE**

**NO. DESCRIPTION:**

1. 3-LAYERS OF HALF LAPPED VINYL TAPE.
2. 3-LAYERS OF HALF LAPPED RUBBER TAPE.
3. COPPER CRIMP CONNECTOR OR COPPER ALLOY SPLIT BOLT CONNECTOR.
4. SOLID COPPER WITH 30 MILS BLUE HDPE INSULATION (AWG #12 TRACER WIRE).
5. SPLIT BOLT.
6. PRESSURE BAR.
7. HEX NUT.

**NOTES:**

- A. REMOVE MAINLINE TRACER WIRE INSULATION MATERIAL TO EXPOSE COPPER CORE WIRE.
- B. IN LINE SPLICES SHALL BE LIMITED TO THE GREATEST EXTENT POSSIBLE. TRACER WIRE SHALL BE AS CONTINUOUS AS POSSIBLE WITHOUT SPLICES.
- C. SPLICES SHALL INCLUDE 2' OF SLACK WIRE ON EACH SIDE OF EACH SPLICE (SEE DETAIL ON THIS SHEET).
- D. TRACER WIRE PLACEMENT NEXT TO PIPE FOR PIPE MATERIALS OTHER THAN HDPE. TRACER WIRE PLACEMENT IN RELATION TO HDPE PIPE IS UNDER PIPE IN CASE OF WEATHER.



**SPLICES WITH 2' OF  
SLACK WIRE**