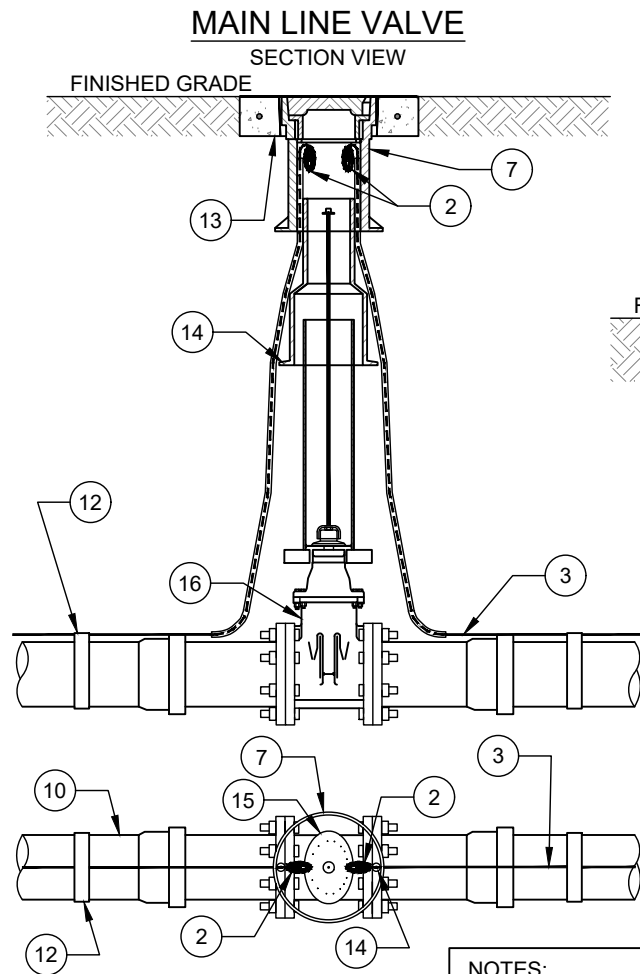
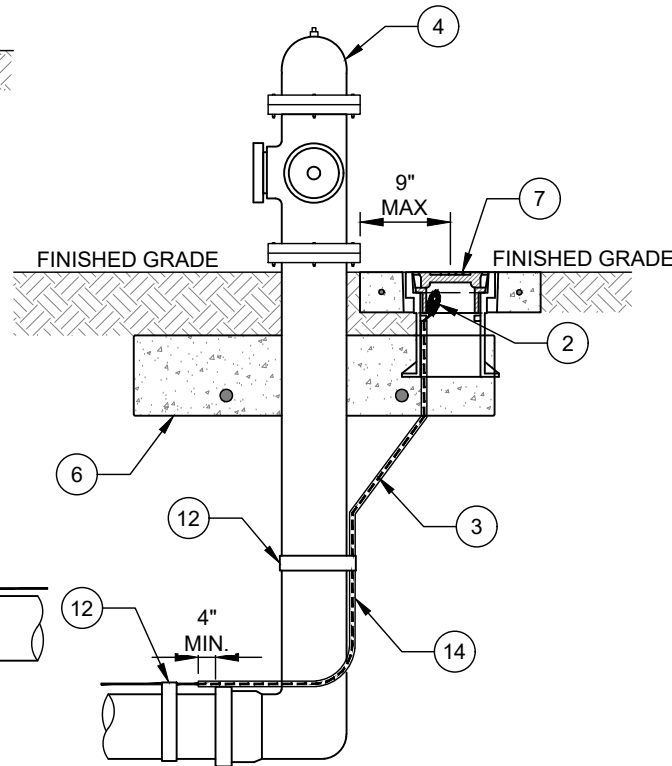


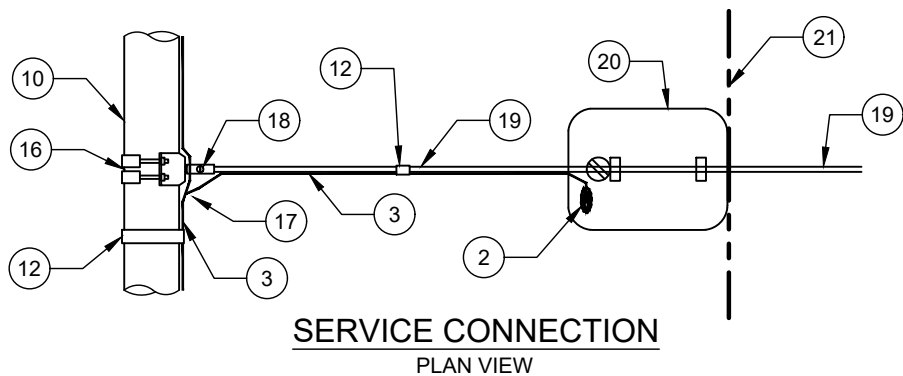
**FIRE HYDRANT**  
PLAN VIEW



**MAIN LINE VALVE**  
PLAN VIEW



**FIRE HYDRANT**  
SECTION VIEW



**SERVICE CONNECTION**  
PLAN VIEW

**NO. DESCRIPTION:**

1. VALVE BOX ASSEMBLY IN CONCRETE PAD (SEE CLTW STD. DETAIL).
2. PROVIDE 24" NEATLY COILED WIRE IN BOX.
3. AWG #12 GAUGE SOLID COPPER TRACER WIRE (TYP.) WITH 30 MILS BLUE HDPE INSULATION.
4. FIRE HYDRANT.
5. FIRE HYDRANT BRANCH.
6. CONCRETE HYDRANT COLLAR. CAST IN PLACE. 3' DIAMETER BY 8" THICK. REINFORCED WITH #4 REBAR.
7. VALVE BOX ASSEMBLY (SEE CLTW STD. DETAIL).
8. GATE VALVE.
9. TEE.
10. WATER MAIN.
11. NO SPLICE (RUN TWO WIRES SEPARATELY).
12. FASTEN TRACER WIRE TO PIPE WITH ZIP TIES OR DUCT TAPE AROUND THE CIRCUMFERENCE OF PIPE AT 10' INTERVALS (TYP.).
13. CONCRETE PAD (SEE CLTW STD. DETAIL).
14. ALL VERTICAL WIRE SHALL BE PLACED IN 1/4" OR 3/8" ID CONDUIT SDR 9 PEX TUBING - ASTM F876 (TYP.).
15. MAIN LINE VALVE.
16. SERVICE SADDLE.
17. SPLICE (SEE CLTW STD. DETAIL).
18. BALL VALVE CORPORATION STOP.
19. WATER SERVICE.
20. METER BOX AND LID (SEE CLTW STD. DETAIL).
21. R/W / PROPERTY LINE.

**NOTES:**

- A. TRACER WIRE SHALL BE AWG #12 GAUGE SOLID COPPER WITH 30 MILS BLUE HDPE INSULATION.
- B. THE TRACER WIRE SHALL BE CONTINUOUS TO THE GREATEST EXTENT POSSIBLE. WHERE SPLICES ARE NECESSITATED IN THE WIRE, THE SPLICES SHALL BE SECURELY BONDED TOGETHER WITH AN APPROVED INDUSTRIAL CONNECTOR TO PROVIDE ELECTRICAL CONTINUITY. CONNECTOR SHALL BE COPPER AND INSULATION SHALL BE REPAIRED AS DETAILED TO SEAL OUT MOISTURE AND CORROSION AND SHALL BE INSTALLED SO AS TO PREVENT ANY UNINSULATED WIRE EXPOSURE. SEE APPROPRIATE STD. DETAIL.
- C. SPLICED CONNECTIONS SHALL BE ALLOWED BETWEEN THE MAIN TRACER WIRE AND THE WATER SERVICE TRACER WIRE.
- D. TRACER WIRE SHALL BE PROTECTED FROM DAMAGE DURING THE EXECUTION OF THE WORK. NO BREAKS OR CUTS IN THE TRACER WIRE OR INSULATION SHALL BE PERMITTED.
- E. PRIOR TO ACCEPTANCE (POST PUNCH LIST) EACH WIRE SEGMENT SHALL PASS A CONDUCTIVITY TEST, WITNESSED BY THE ENGINEER OR ENGINEER'S REPRESENTATIVE.
- F. WHERE 2 OR MORE WIRES ENTER A VALVE BOX ASSEMBLY, (PROVIDE 24" OF NEATLY COILED WIRE) AFTER ACCEPTANCE TESTING, CONNECT ENDS OF ALL WIRES WITH WATER PROOF WIRE CONNECTOR NUT AND 3" BARE #12 PIGTAIL.
- G. SPLICES IN THE PRIMARY TRACER WIRE ALONG THE WATER MAIN SHALL INCLUDE 2' OF SLACK WIRE ON EACH SIDE OF EACH SPLICE.
- H. FOR INSTALLING A NEW SERVICE LINE ON AN EXISTING MAIN WITH TRACER WIRE, ONLY SPLICE TO EXISTING WIRE WITH 2' OF SLACK ON NEW SERVICE LINE.
- I. TRACER WIRE PLACEMENT NEXT TO PIPE FOR PIPE MATERIALS OTHER THAN HDPE. TRACER WIRE PLACEMENT IN RELATION TO HDPE PIPE IS UNDER PIPE IN CASE OF WEATHER.