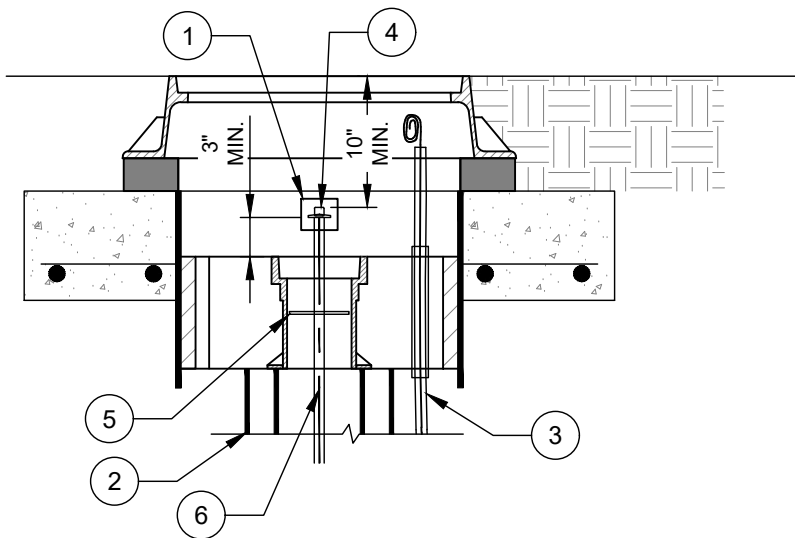
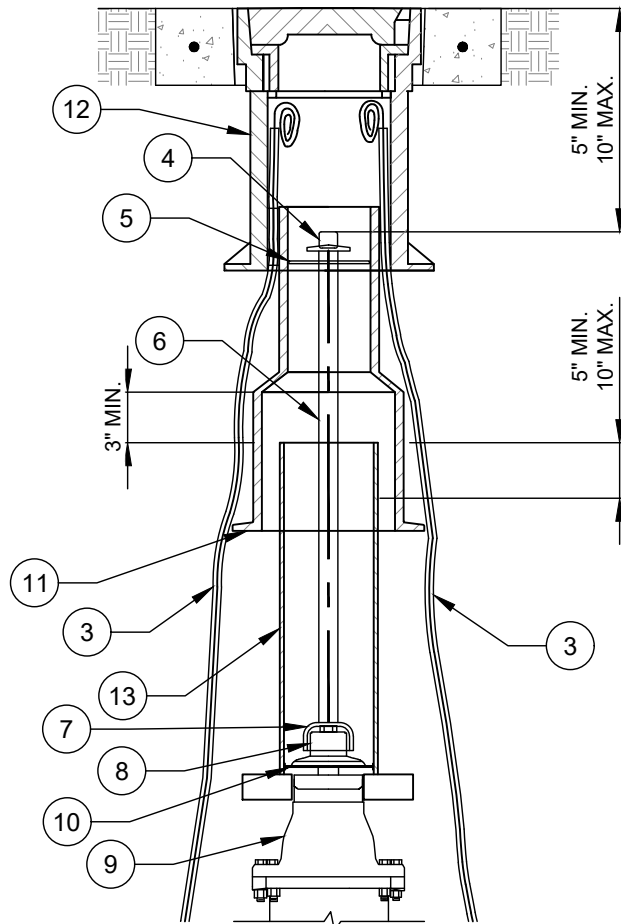


**16" AND LARGER GATE VALVE  
EXTENSION STEMS**



**12" AND SMALLER GATE VALVE  
EXTENSION STEM ASSEMBLY**



**NO. DESCRIPTION:**

1. VALVE LOCK BOX - FURNISHED BY CLTW.
2. 12"-20" DIP STANDPIPE.
3. TRACER WIRE CONDUIT.
4. STANDARD VALVE OPERATING NUT (2" SQUARE OPERATING NUT) PAINTED RED FOR OPEN RIGHT OR BLACK FOR OPEN LEFT, WITH OPEN OPERATION ARROW.
5. ALUMINUM 1/4" S.S. PLATE, 4 1/2" DIAMETER CENTERING COLLAR. LOCATE THE CENTERING COLLAR INTO THE VALVE BOX AS SHOWN.
6. 1 1/4" SQUARE S.S. STEM (LENGTH VARIES, NO JOINTS ALLOWED).
7. STANDARD OR S.S. OPERATING SOCKET WITH FOUR 3/8" SET SCREWS.
8. VALVE OPERATING NUT WITH SET SCREW DIMPLES.
9. VALVE.
10. PLASTIC VALVE CENTERING COLLAR. PLASTIC VALVE CENTERING DISK (EX: PLASTIC POSI-CAP VALVE BOX ALIGNER DISK) REQUIRED TO KEEP VALVE BOX ALIGNED DURING BACK FILLING.
11. BOTTOM SECTION VALVE BOX.
12. TOP SECTION OF VALVE BOX.
13. 6" C900 PVC OR DIP STANDPIPE.

**NOTES:**

- A. EXTENSION REQUIRED IF DEPTH IS GREATER THAN THREE FEET.
- B. EXTENSION MUST BE ONE SOLID PIECE FROM NUT TO COUPLING.