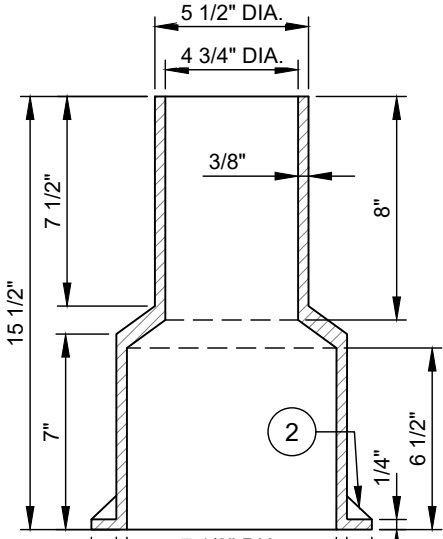
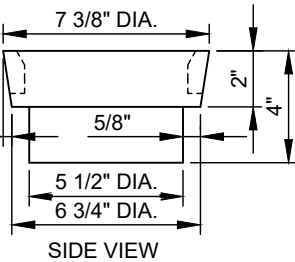


VALVE BOX - TOP SECTION SECTION VIEW

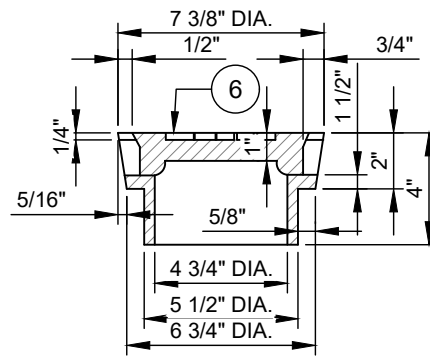


VALVE BOX - BOTTOM SECTION SECTION VIEW

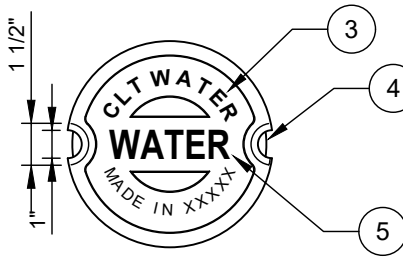
WEIGHT (POUNDS)	MINIMUM
TOP SECTION	31
BOTTOM SECTION	36
COVER	19
TOTAL	86



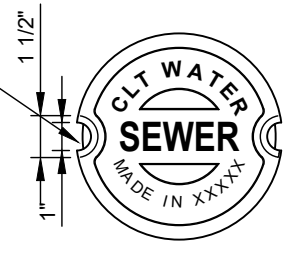
SIDE VIEW



COVER - SECTION VIEW



WATER COVER - TOP VIEW



SEWER COVER - TOP VIEW



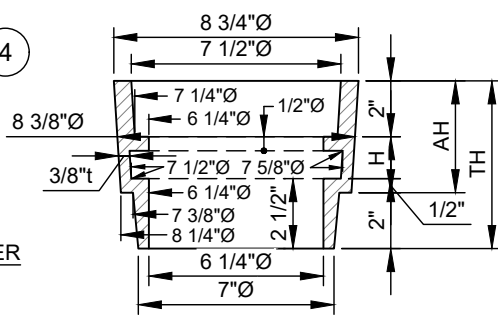
RECLAIMED WATER - TOP VIEW



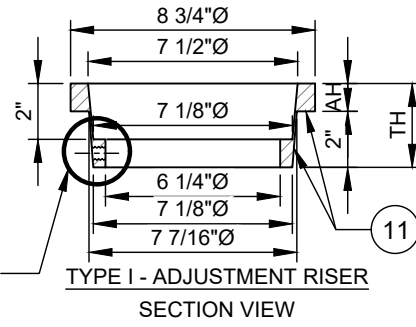
CATHODIC PROTECTION COVER TOP - VIEW



TRACER WIRE TERMINAL POINT COVER TOP - VIEW



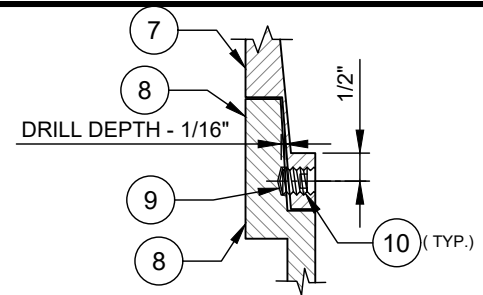
TYPE II - ADJUSTMENT RISER SECTION VIEW



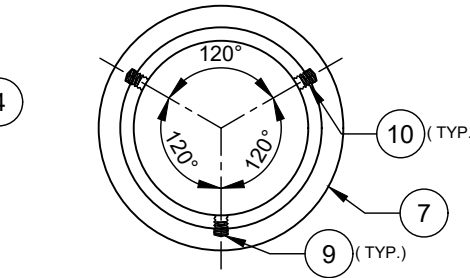
TYPE I - ADJUSTMENT RISER SECTION VIEW

TYPE II - ADJUSTMENT RISER			
TH - TOTAL HEIGHT	AH - ADJUSTMENT HEIGHT	H	MINIMUM WEIGHT - LBS
< 4 1/2"	< 2 1/2"	NOT APPROVED	NOT APPROVED
4 1/2"	2 1/2"	0	16
5"	3"	1/2"	20
6"	4"	1 1/2"	22.5
7"	5"	2 1/2"	25
8"	6"	3 1/2"	27
10"	8"	5 1/2"	32

TYPE I - ADJUSTMENT RISER		
TH - TOTAL HEIGHT	AH - ADJUSTMENT HEIGHT	MIN. WEIGHT LBS
3"	1"	7
3 1/2"	1 1/2"	9
4"	2"	15
> 4"	NOT APPROVED	N/A



TYPE I CROSS SECTION - ASSEMBLY



TYPE I - ADJUSTMENT RISER TOP VIEW

- NO. DESCRIPTION:
- 2 LUGS 3/8" X 1/4".
 - (4) 1/4" RIBS.
 - 3/4" LETTERING (TYP.).
 - (2) PICK HOLES.
 - 1 1/4" RAISED FLUSH LETTERS (TYP.).
 - RECESSED LETTERING.
 - TYPE I ADJUSTMENT RISER.
 - VALVE BOX - TOP SECTION.
 - 1/2" DIAMETER X 1/16" - FIELD DRILL HOLE.
 - 18 - 8 S.S. 3/8"-16 X 3/8" HEX SET SCREW WITH PERMANENT THREAD LOCK (RED) - LOCTITE #271, PERMABOND HM128, OR APPROVED EQUAL.
 - MACHINED SURFACE.
 - 0.44"-1/2" LETTERING (TYP.).

- NOTES:
- LOAD RATING - HEAVY DUTY.
 - FERROUS CASTINGS MATERIAL - ASTM A48 - CLASS 35 GRAY IRON.
 - COATING - UNDIPPED OR ASPHALT VARNISH.
 - WEIGHT - 0% MINUS TOLERANCE.
 - CASTINGS SHALL CONFORM TO DIMENSION AND WEIGHT REQUIREMENTS.
 - TYPE II ADJUSTMENT RISERS MAY BE STACKED.
 - TYPE I ADJUSTMENT RISERS MAY NOT BE STACKED.
 - ADJUSTMENT RINGS ARE NOT APPROVED FOR USE IN NEW CONSTRUCTION.
 - ADJUSTMENT RINGS MAY ONLY BE USED ON RESURFACING PROJECTS AND IS LIMITED TO ONE RISER PER VALVE BOX.