

# 2024-080: Diallo Korka

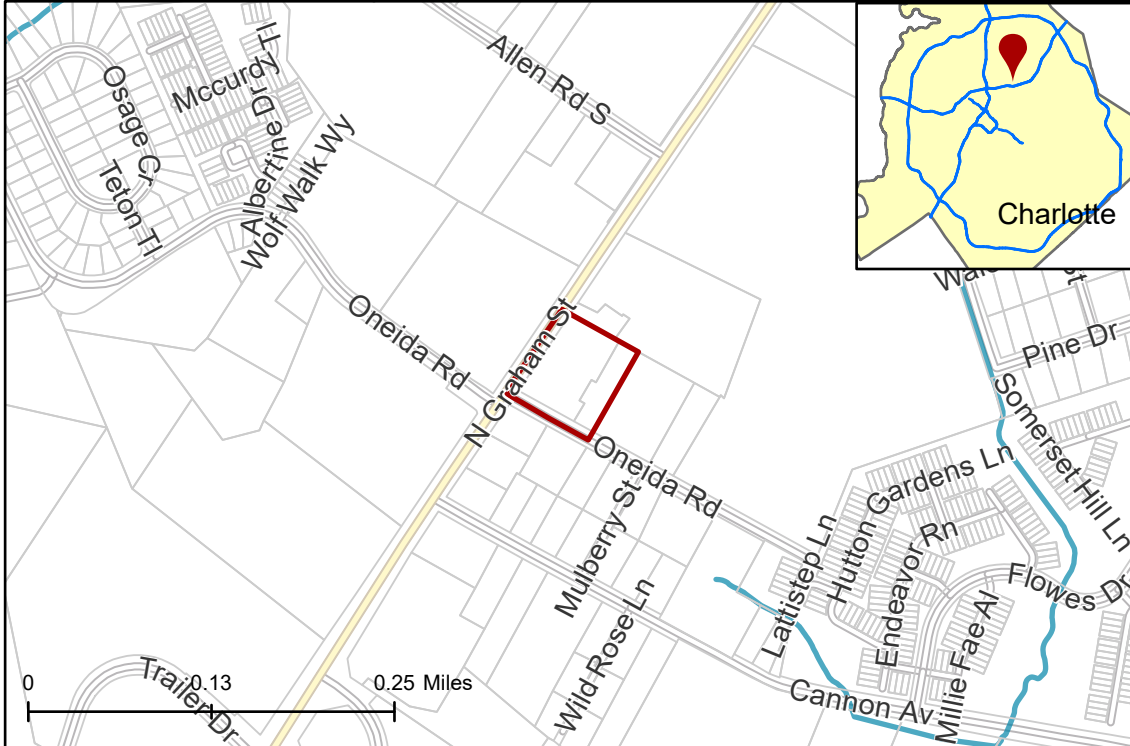
Parcel(s) 04509112, 04509111

**Current Zoning** I-1(CD) (Light Industrial, Conditional)

**Requested Zoning** ML-1 (Manufacturing and Logistics-1)

Approximately 1.658 acres

## Location of Requested Rezoning



## Rezoning Map

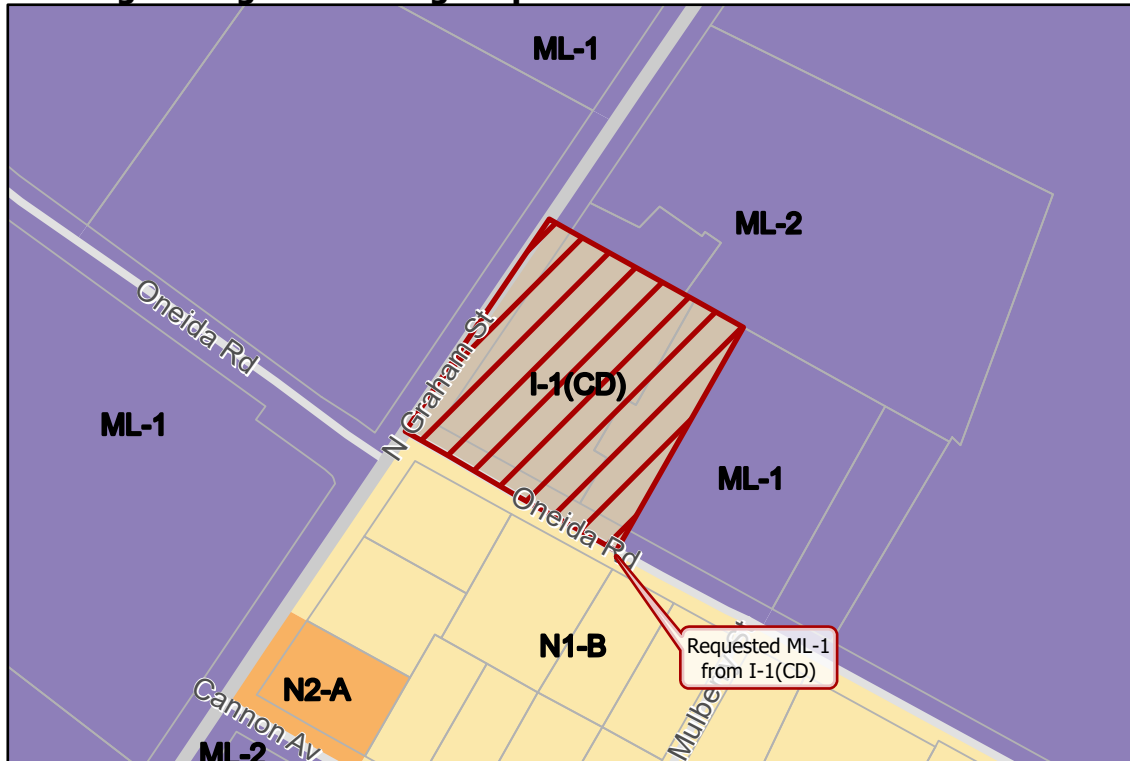


- 2024-080
- Inside City Limits
- Parcel
- Streams

- City Council District
- 1-Danté Anderson



## Existing Zoning & Rezoning Request



- Requested ML-1 from I-1(CD)

## Zoning Classification

- Neighborhood 1
- Neighborhood 2
- Manufacturing & Logistics
- Light Industrial



Map Created 7/29/2024