

2024-048: Equinox Development

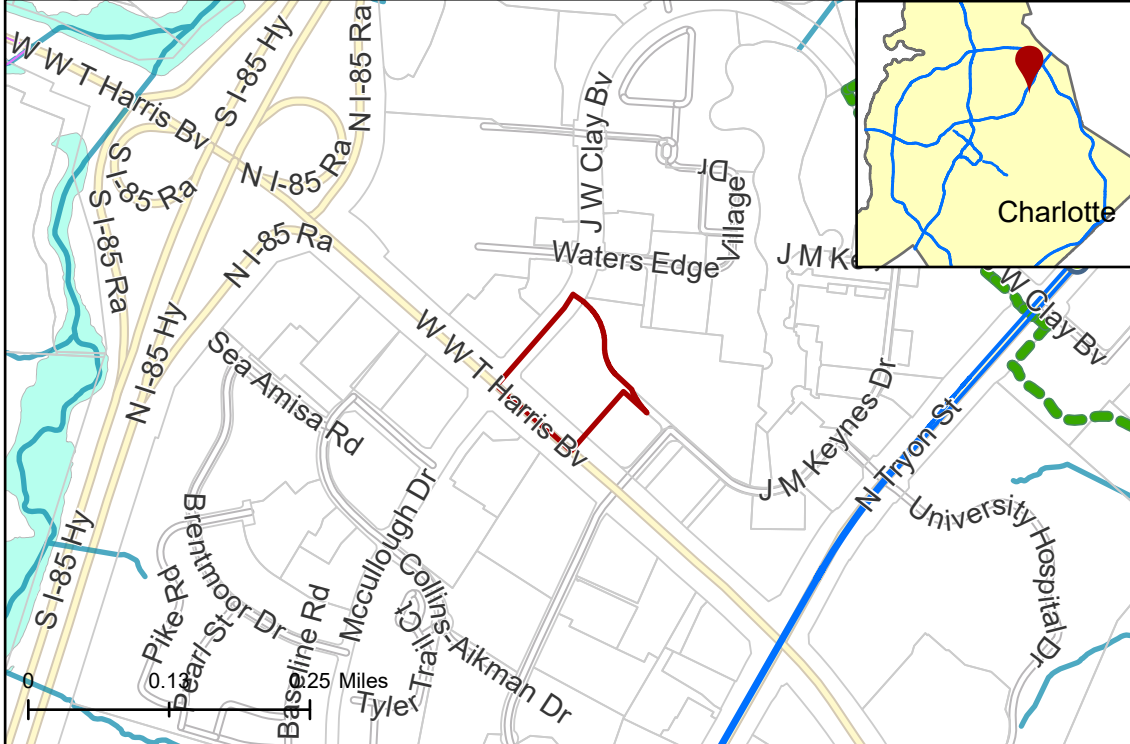
Parcel(s) 04725209

Current Zoning B-1(CD) (Neighborhood Business, Conditional)

Requested Zoning B-1(CD)SPA (Neighborhood Business, Site Plan Amendment, Conditional)

Approximately 3.68 acres

Location of Requested Rezoning



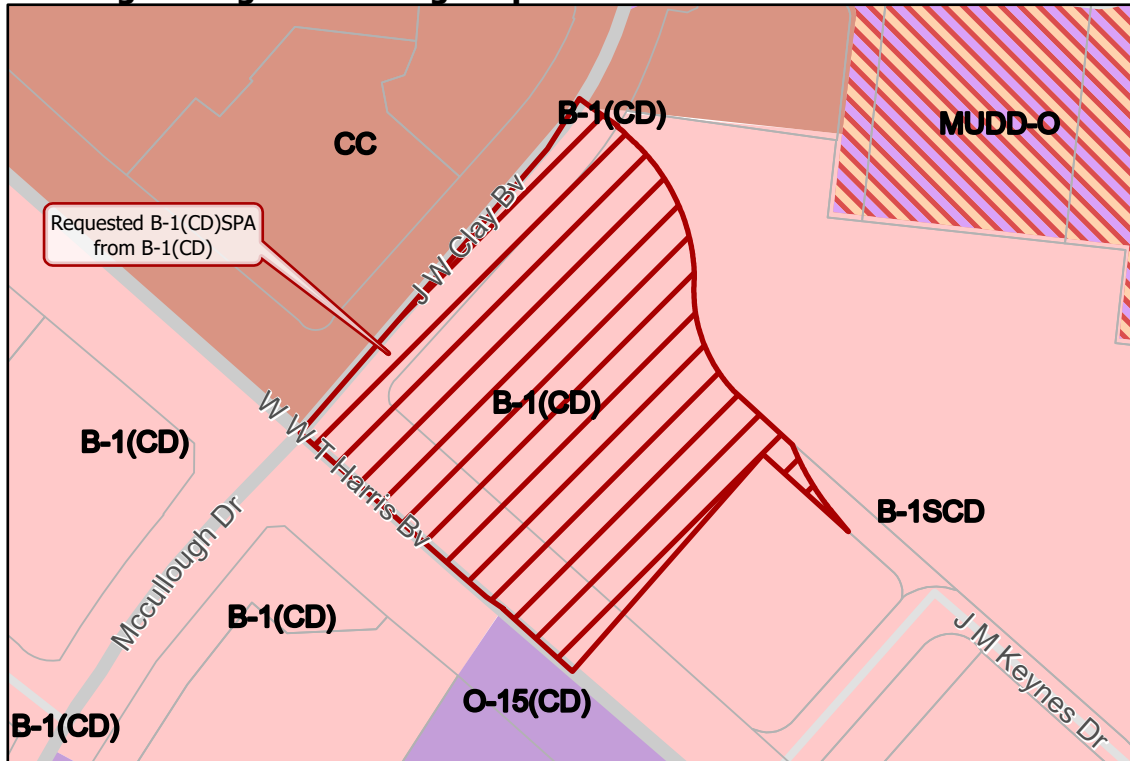
Rezoning Map



- 2024-048
- Inside City Limits
- Parcel
- LYNX Blue Line Station
- LYNX Blue Line
- Greenway
- Streams
- FEMA Flood Plain
- City Council District 4-Reneé Johnson



Existing Zoning & Rezoning Request



- Requested B-1(CD)SPA from B-1(CD)
- Office
- Business
- Commercial Center
- Mixed Use



Map Created 6/4/2024