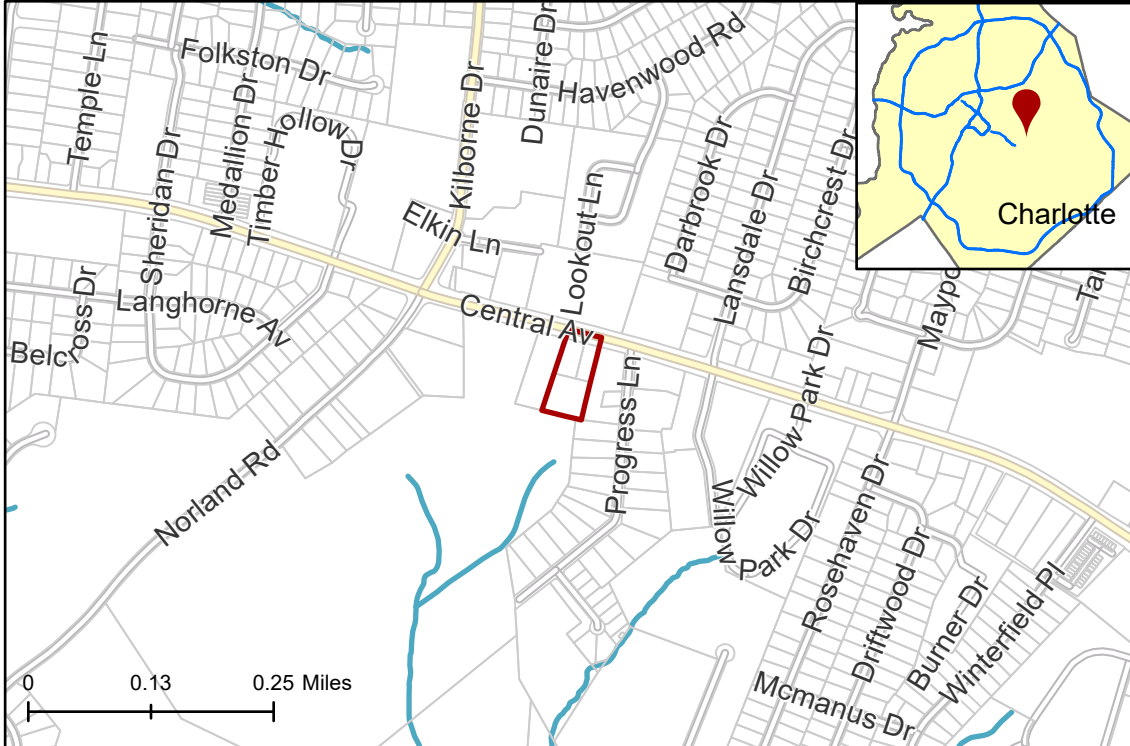


2023-120: Ascent Real Estate Capital, LLC

Requested Zoning O-1(CD) (Office, Conditional)
Requested Zoning N2-B (Neighborhood 2-B)

Approximately 1.9 acres

Location of Requested Rezoning



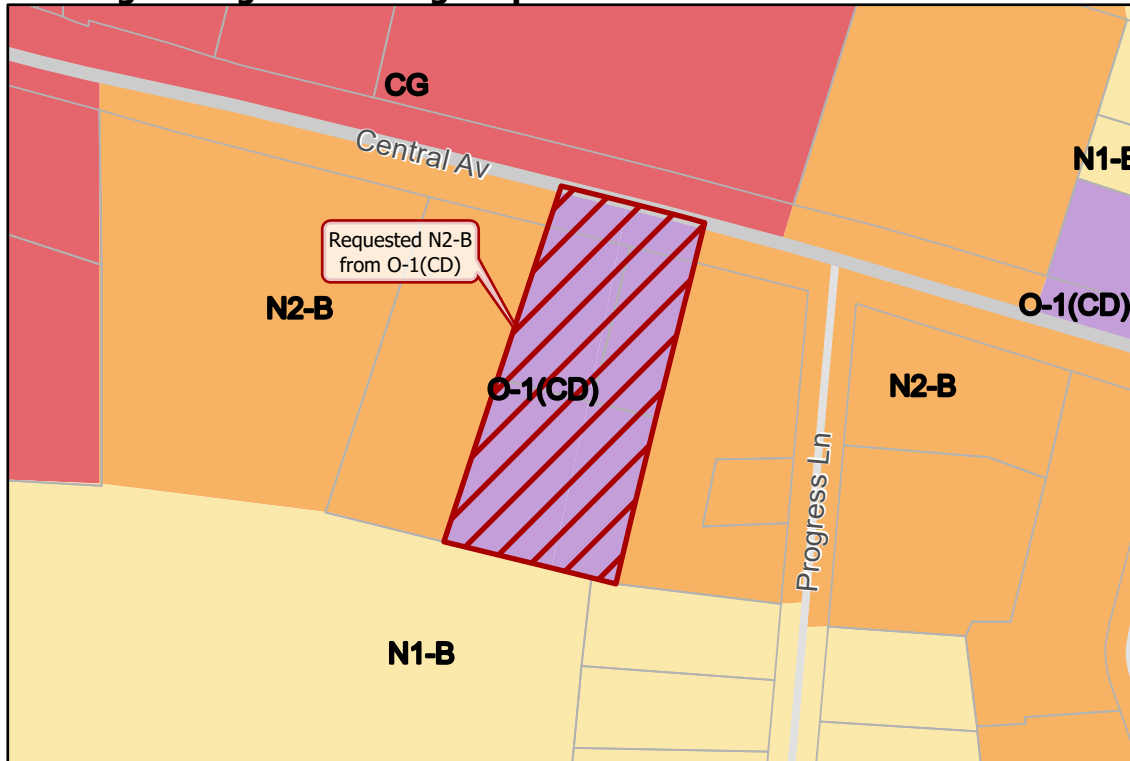
Rezoning Map



- 2023-120
- Inside City Limits
- Parcel
- Streams
- City Council District**
- 5-Marjorie Molina



Existing Zoning & Rezoning Request



- Requested N2-B from O-1(CD)
- Zoning Classification**
- Neighborhood 1
- Neighborhood 2
- Office
- Commercial

Map Created 10/5/2023