

**RESOLUTION AUTHORIZING THE  
CHARLOTTE BUSINESS INCLUSION POLICY**

WHEREAS, the City of Charlotte contracted with Collette Holt & Associates to conduct a disparity study; and,

WHEREAS, the City of Charlotte received the 2022 City of Charlotte Minority and Women Business Enterprise Disparity Study Report ("2022 Disparity Study") from Colette Holt & Associates; and,

WHEREAS, the City of Charlotte accepted and adopted findings and the analyses of the 2022 Disparity Study on September 26, 2022; and,

WHEREAS, the City of Charlotte desires to adopt the Charlotte Business Inclusion Policy to delineate the duties and responsibilities for implementing the 2022 Disparity Study; and,

WHEREAS, the City of Charlotte may contract with minority-owned businesses, women-owned businesses, and small business enterprises pursuant to, but not limited to, North Carolina General Statutes § 143-128.2, North Carolina General Statutes § 143-128.3, North Carolina General Statutes § 143-128.4, Session Law 2002-91, and Session Law 2008-101; and,

WHEREAS, the City Council is convened in a regular meeting and has conducted a public hearing; and,

NOW, THEREFORE, BE IT RESOLVED by the City Council for the City of Charlotte that it hereby adopts the Charlotte Business Inclusion Policy.

THIS THE 10th DAY OF APRIL, 2023.

**CERTIFICATION**

I, Stephanie C. Kelly, City Clerk of the City of Charlotte, North Carolina, DO HEREBY CERTIFY that the foregoing is a true and exact copy of a Resolution adopted by the City Council of the City of Charlotte, North Carolina, in regular session convened on the 10<sup>th</sup> day of April 2023, the reference having been made in Minute Book 157 and recorded in full in Resolution Book 53, Page(s) 692-702.

WITNESS my hand and the corporate seal of the City of Charlotte, North Carolina, this 10<sup>th</sup> day of April 2023.



Stephanie C. Kelly, City Clerk, MMC, NCCMC

**Approved by Charlotte City Council on April 10, 2023**

# **CHARLOTTE BUSINESS INCLUSION PROGRAM POLICY**

## TABLE OF CONTENTS

1.0 Purpose

2.0 Scope

3.0 Policy

4.0 Definitions

5.0 Roles and Responsibilities

6.0 Administrative Procedures Manual

**1.0 Purpose**

The Charlotte Business Inclusion Program seeks to develop and grow Small Business Enterprises in the Relevant Market as well as remediate the effects of discrimination against Minority-Owned Business Enterprises and Women-Owned Business Enterprises in the Relevant Market that have adversely affected the ability of Minority-Owned Business Enterprises and Women-Owned Business Enterprises to participate in City Contracts.

**2.0 Scope.** The Charlotte Business Inclusion Program shall apply to:

- 2.1 Any employee of the City of Charlotte who has the authority to award or recommend for award any Contract.
- 2.2 Any committee established to support the Charlotte Business Inclusion Program.
- 2.3 Any Business Enterprise that registers with the Charlotte Business Inclusion Office, submits a Bid to the City of Charlotte, or has a Contract with the City of Charlotte.
- 2.4 Any Subcontractor who is identified on a Bid to the City of Charlotte or receives funds for work performed on a Contract.
- 2.5 Any Business Enterprise that receives money from the City of Charlotte.

**3.0 Policy**

- 3.1 It is the policy of the City of Charlotte to enhance competition in City Contracts and promote economic growth and development by:
  - 3.1.1 Increasing the utilization of Minority-Owned Business Enterprises, Women-Owned Business Enterprises, and Small Business Enterprises in City Contracts;
  - 3.1.2 Promoting small business start-up, development, and growth;
  - 3.1.3 Monitoring, evaluating, and reporting on participation of any Minority-Owned Business Enterprise, Women-Owned Business Enterprise, and Small Business Enterprise; and,
  - 3.1.4 Monitoring, evaluating, and reporting on compliance with the provisions of the Charlotte Business Inclusion Program.

### 3.2 Enabling Legislation

#### 3.2.1 Minority-Owned Business Enterprise & Women-Owned Business Enterprise.

North Carolina General Statutes Sections 143-128.1, 143-128.2, 143-128.3, 143-128.4, and 143-131 authorizes the City of Charlotte to have a Minority-Owned Business Enterprise and Women-Owned Business Enterprise program for certain Contracts.

#### 3.2.2 Small Business Enterprise

Section 8.88 of the Charlotte City Charter authorizes the City of Charlotte to have a Small Business Enterprise program and to promote the development of small businesses in the Charlotte Metropolitan Statistical Area and those counties outside the Charlotte Metropolitan Statistical Area. The North Carolina General Assembly added Section 8.88 after ratifying Senate Bill 1336 on August 27, 2002, which became Session Law 2002-91. Section 8.88 was subsequently amended to authorize the inclusion of counties outside the Charlotte Metropolitan Statistical Area after ratification of House Bill 2488 on July 15, 2008, by the North Carolina General Assembly, which became Session Law 2008-101.

#### 3.2.3 Economic Development and Community Development

North Carolina General Statutes Section 158-7.1 and Section 160A-456 authorizes the City of Charlotte to engage in economic development and community development activities.

### 3.3 Disparity Study Background.

3.3.1 On January 15, 2021, the City of Charlotte retained Colette Holt and Associates (“Consultant”) to conduct a disparity study (“Disparity Study”) to (i) determine whether disparity exists between the number of Minority-Owned Business Enterprises and Women-Owned Business Enterprises available to perform on City Contracts and the City’s utilization of those Business Enterprises; (ii) determine if there is a legally defensible basis for the use of race-conscious and gender-conscious measures; and (iii) provide data and information that could be used to consider modifications to the Charlotte Business Inclusion Program.

3.3.2 Between January 2021 and June 2022, the Consultant gathered quantitative data and qualitative data from the City and local businesses for the Disparity Study.

- 3.3.3 In June 2022, the Consultant completed the Disparity Study and found that disparities existed between the availability and utilization of Minority-Owned Business Enterprises and Women-Owned Business Enterprises. The Consultant recommended that the City use race-conscious and gender-conscious measures because the utilization of Minority-Owned Business Enterprises and Women-Owned Business Enterprises increased with goals contracts compared to no-goals Contracts.
- 3.3.4 On June 22, 2022, and August 1, 2022, the Consultant presented its report to the Economic Development Committee of the Charlotte City Council. The Jobs & Economic Development Committee approved a recommendation that the Charlotte City Council accept and adopt the findings and recommendations set forth in the Disparity Study.
- 3.3.5 On September 12, 2022, the Consultant presented its report to the Charlotte City Council.
- 3.3.6 On September 26, 2022, the Charlotte City Council adopted the Consultant's report and findings.
- 3.4 Program Findings. In adopting the Disparity Study on September 26, 2022, the Charlotte City Council:
  - 3.4.1 Reaffirmed and accepted the findings and conclusions set forth or referenced in Disparity Study and the appendices to the Disparity Study;
  - 3.4.2 Acknowledged the disparity in all four areas of City Contract categories: Construction; Goods; Professional Services; and Services;
  - 3.4.3 Acknowledged that the use of race-conscious and gender-conscious measures have been effective in increasing the utilization of Minority-Owned Business Enterprises and Women-Owned Business Enterprises;
  - 3.4.4 Found that the City has a compelling interest to remedy the ongoing effects of marketplace discrimination against Minority-Owned Business Enterprises and Women-Owned Business Enterprises and to avoid becoming a passive participant in private sector discrimination;
  - 3.4.5 Proclaimed that the City is fully committed to not only remedying the ongoing effects of marketplace discrimination, but also to using its spending powers in a manner that promotes a robust and inclusive economy that fully utilizes all segments of its business population, regardless of race or gender; and

3.4.6 Based upon an extensive factual predicate, determined that a narrowly tailored combination of race-neutral and gender-neutral remedies and race-conscious and gender-conscious remedies is necessary to serve those compelling interests and needs of the City.

**3.5 Race-Conscious and Gender-Conscious Remedies**

The race-conscious and gender-conscious remedies shall be met by the racial/ethnicity groups and gender groups that were found to have a statistically significant underutilization in the Disparity Study. Race-conscious and gender-conscious remedies will be narrowly tailored to address the documented statistical disparity. Any Contract Goal will be based on the availability of any Minority-Owned Business Enterprise, Woman-Owned Business Enterprise, and Small Business Enterprise.

**3.6 Sunset for Race-Conscious and Gender-Conscious Measures**

Absent an extension by the Charlotte City Council, the race-conscious and gender-conscious measures will expire on January 1, 2028.

**3.7 Severability**

If any provision of the CBI Policy or CBI Program Administrative Procedures Manual or any application thereof is held invalid or unenforceable, such invalidity or unenforceability shall not affect other provisions or applications of the Charlotte Business Inclusion Program which can be given effect without the invalid provisions or applications and the remaining provisions are to be severable and shall remain in full force and effect.

**4.0 Definitions**

All capitalized terms used in the Charlotte Business Inclusion Policy shall be defined and set forth in the CBI Program Administrative Procedures Manual.

**5.0 Program Roles and Responsibilities**

The Charlotte City Council sets forth the following roles and responsibilities in administering and enforcing the Charlotte Business Inclusion Program.

**5.1 City Manager.** Such person shall have the authority to:

5.1.1 Determine the Charlotte Business Inclusion Office's organizational structure;

5.1.2 Evaluate the City's efforts to further the purpose of the Charlotte Business Inclusion Program;

5.1.3 Propose any amendment to the Charlotte Business Inclusion Program Policy;

- 5.1.4 Hear appeals concerning the Business Inclusion Officer's decision;
  - 5.1.5 Direct the Business Inclusion Officer to develop uniform standards for inclusion of the Charlotte Business Inclusion Program into City documents and procedures; and,
  - 5.1.6 Receive advice and input regarding the Charlotte Business Inclusion Program from the Business Inclusion Officer, Department Head, and City Attorney.
- 5.2 **Business Inclusion Officer.** Such person shall have the authority to:
- 5.2.1 Determine the appropriate staffing, operations, training, and outreach for the Charlotte Business Inclusion Office;
  - 5.2.2 Establish stakeholder groups and teams to facilitate the administration and enforcement of the Charlotte Business Inclusion Program.
  - 5.2.3 Administer the daily operation of the Charlotte Business Inclusion Program;
  - 5.2.4 Serve as an ombudsman for concerns by Minority-Owned Business Enterprises, Small Business Enterprises, and Women-Owned Business Enterprises;
  - 5.2.5 Offer programs and supporting services for outreach and business development assistance to Minority-Owned Business Enterprises, Small Business Enterprises, and Women-Owned Business Enterprises;
  - 5.2.6 Develop, amend, and enforce a CBI Program Administrative Procedures Manual. It shall include, but is not limited to, those items set forth in Section 6;
  - 5.2.7 Ensure compliance with federal, state and local requirements;
  - 5.2.8 Maintain data tracking and reporting and publish appropriate reports; and,
  - 5.2.9 Oversee the City's disparity study and set an aspirational goal.
- 5.3 **Department Heads.** Such persons shall have the authority to:
- 5.3.1 Promote the Charlotte Business Inclusion Program and participation by any Minority-Owned Business Enterprise, Women-Owned Business Enterprise, and Small Business Enterprise participation in the Solicitation and Contract activities of their respective Departments;
  - 5.3.2 Develop and implement strategies in furtherance of the Charlotte Business Inclusion Program;



5.3.3 Monitor and report utilization of Minority-Owned Business Enterprises, Women-Owned Business Enterprises, and Small Business Enterprises to the Business Inclusion Officer; and,

5.3.4 Ensure compliance with all federal, state and local requirements.

5.4 **City Attorney.** Such person shall have the authority to:

5.4.1 Advise the Charlotte City Council, City Manager, Department Head, or the Business Inclusion Officer on legal issues related to the Charlotte Business Inclusion Program;

5.4.2 Review any recommendation to reject a Bid for non-compliance with the Charlotte Business Inclusion Program; and

5.4.3 Ensure compliance with federal, state, and local laws.

5.5 **Delegation**

The City Manager, Business Inclusion Officer, Department Head, and City Attorney may designate other individuals to perform any tasks or functions assigned to them.

## 6.0 **Administrative Procedures Manual**

6.1 **Burden of Proof**

The CBI Program Administrative Procedures Manual shall set forth the burden of proof for challenging a decision of the Business Inclusion Officer and shall presume that all Business Enterprises have full knowledge of the Charlotte Business Inclusion Policy and CBI Administrative Procedures Manual.

6.2 **Certification of Small Business Enterprises**

The CBI Program Administrative Procedures Manual shall, at a minimum, address the certification process, duration of the certification, the decertification process, any ownership eligibility or ineligibility, any management and control, restrictions on affiliation, certification renewals, suspension or revocation of the certification, and graduation size standards.

6.3 **Registration of Minority-Owned Business Enterprises and Women-Owned Business Enterprises**

The CBI Program Administrative Procedures Manual shall, at a minimum, address the registration process, the process for removal of the registration, any ownership eligibility or ineligibility, and suspension or revocation of the registration.

6.4 **Commercially Useful Function**

The CBI Program Administrative Procedures Manual shall, at a minimum, address what constitutes a Commercially Useful Function and/or Conduit activity.

6.5 Goals

The CBI Program Administrative Procedures Manual shall, at a minimum, set forth the types of Contract Goals established by the Business Inclusion Officer, the minimum dollar amounts before any Contract Goal can be established, exclusions for state-funded and federally-funded contracts, agreements with third-parties, and self-performance.

6.6 Good Faith Negotiation and Good Faith Efforts

The CBI Program Administrative Procedures Manual shall, at a minimum, address what constitutes Good Faith Negotiation, the documentation necessary to demonstrate Good Faith Negotiation and Good Faith Efforts, all Good Faith Effort categories, the points awarded for each Good Faith Effort category, the process for submitting Good Faith Efforts documentation, and the process for accepting or rejecting Good Faith Efforts.

6.7 Responsibilities After Contract Award

The CBI Program Administrative Procedures Manual shall, at a minimum, address new Contract opportunities, the termination or replacement of Minority-Owned Business Enterprises, Small Business Enterprises, and Women-Owned Business Enterprises on a Contract, and the reduction in work for a Minority-Owned Business Enterprises, Small Business Enterprises, and Women-Owned Business Enterprise.

6.8 Remedies & Liquidated Damages

The CBI Program Administrative Procedures Manual shall, at a minimum, address what is a violation or material breach of the Charlotte Business Inclusion Program, the amount of any liquidated damage, and what rights and remedies that may be exercised by the City of Charlotte.

6.9 Authority to Grant Waivers.

The CBI Program Administrative Procedures Manual shall, at a minimum, address waivers by the Business Inclusion Officer for noncompliance with the Charlotte Business Inclusion Program. Any waiver may be granted by the Business Inclusion Officer without notice to or approval by the Charlotte City Council.

6.10 Standard Review

The CBI Program Administrative Procedures Manual shall, at a minimum, address any applicable deadlines for appealing a decision of the Business Inclusion Officer and the process for any appeal.

6.11 Program Information Technology System Administration

The CBI Program Administrative Procedures Manual shall, at a minimum, address the use of and requirements for a diversity and inclusion enterprise system.

6.12 Program Documentation

The CBI Program Administrative Procedures Manual shall, at a minimum, address the types of forms or documentation that a Business Enterprise may submit, and any requirements for submitting the forms or documentation by a Business Enterprise.

6.13 Small Business Market Strategy

The CBI Program Administrative Procedures Manual may, at a minimum, address the requirements, process, and dollar threshold for small business market strategy.

6.14 Committees.

The CBI Program Administrative Procedures Manual shall, at a minimum, address the composition of any stakeholder group and provide the charge for it. The Charlotte Business Inclusion Advisory Committee may be referenced in the Administrative Manual but only in accordance with the charge mandated by the Charlotte City Council.

6.15 Outreach, Assistance and Business Development

The CBI Program Administrative Procedures Manual shall, at a minimum, address programs and activities to provide outreach and business development assistance to Minority-Owned Business Enterprises, Small Business Enterprises, and Women-Owned Business Enterprise.

RESOLUTION TO CLOSE A PORTION OF UNOPENED FIRST STREET AND A PORTION OF UNOPENED VERNEDALE ROAD IN THE CITY OF CHARLOTTE, MECKLENBURG COUNTY, NORTH CAROLINA

---

---

WHEREAS, pursuant to the provisions of Chapter 160A-299 of the General Statutes of North Carolina, the City Council has caused to be published a Resolution of Intent to close a Portion of Unopened First Street and a Portion of Unopened Vernedale Road which calls for a public hearing on the question; and

WHEREAS, the petitioner has caused a copy of the Resolution of Intent to close a Portion of Unopened First Street and a Portion of Unopened Vernedale Road to be sent by registered or certified mail to all owners of property adjoining said right-of-way and prominently posted a notice of the closing and public hearing in at least two places along said street or alleys, all as required by G.S.160A-299; and

WHEREAS, the city may reserve its right, title, and interest in any utility improvement or easement within a street closed pursuant to G.S.160A-299; and

WHEREAS, the public hearing was held on the 10th day of April, and City Council determined that closing a Portion of Unopened First Street and a Portion of Unopened Vernedale Road is not contrary to the public interest, and that no individual, firm or corporation owning property in the vicinity thereof will be deprived of reasonable means of ingress and egress to their or its property.

NOW, THEREFORE, BE IT RESOLVED by the City Council of the City of Charlotte, North Carolina at its regularly assembled meeting of April 10th, 2023 that the Council hereby orders the closing a Portion of Unopened First Street and a Portion of Unopened Vernedale Road in the City of Charlotte, Mecklenburg County, North Carolina as shown in the map marked "Exhibit A," and is more particularly described by metes and bounds in the document marked "Exhibit B," all of which are attached hereto and made a part hereof.

BE IT FURTHER RESOLVED that a certified copy of this Resolution be filed in the Office of the Register of Deeds for Mecklenburg County, North Carolina.

**CERTIFICATION**

I, Stephanie C. Kelly, City Clerk of the City of Charlotte, North Carolina, DO HEREBY CERTIFY that the foregoing is a true and exact copy of a Resolution adopted by the City Council of the City of Charlotte, North Carolina, in regular session convened on the 10<sup>th</sup> day of April 2023, the reference having been made in Minute Book 157 and recorded in full in Resolution Book 53, Page(s) 703-712.

WITNESS my hand and the corporate seal of the City of Charlotte, North Carolina, this 10<sup>th</sup> day of April 2023.



---

Stephanie C. Kelly, City Clerk, MMC, NCCMC

April 10, 2023

EXHIBIT "A"

Resolution Book 53, Page 705

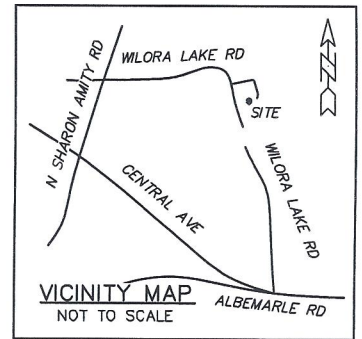
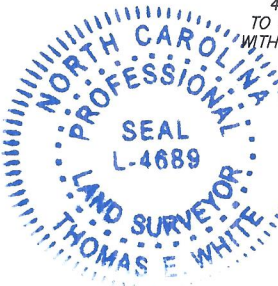
THIS IS TO CERTIFY THAT ON THE 21st DAY OF NOVEMBER 2022, AN ACTUAL SURVEY WAS MADE UNDER MY SUPERVISION OF THE PROPERTY SHOWN ON THIS PLAT, AND THAT THE BOUNDARY LINES AND THE IMPROVEMENTS, IF ANY, ARE AS SHOWN HEREON.

SIGNED

*[Handwritten Signature]*

PROFESSIONAL LAND SURVEYOR

N.C. GRID (NAD83/2011)



~NOW OR FORMERLY~  
WILORA LAKE LLC  
DB 37211/319  
LOT 2, MB 70/352  
PID 10310230

AREA #1  
0.100 AC.  
4,337 SQ.FT.  
TO BE COMBINED  
WITH PID 10310106

AREA #2  
0.034 AC.  
1,502 SQ.FT.  
TO BE COMBINED  
WITH PID 10310230

DRIVESHAFT  
(FOUND)

FIRST STREET  
40' PUBLIC R/W  
(UNIMPROVED/NOT OPEN)  
(MB 6/329)

~NOW OR FORMERLY~  
ROY CASE CLEGG  
DB 9744/931  
PID 10310106

RESERVED  
20' STORM  
DRAINAGE  
EASEMENT

~NOW OR FORMERLY~  
WILORA LAKE LLC  
DB 37211/319  
PID 10310223

AREA #3  
0.071 AC.  
3,074 SQ.FT.  
TO BE COMBINED  
WITH PID 10310223

RESERVED  
20' SANITARY  
SEWER  
EASEMENT

~NOW OR FORMERLY~  
WILORA LAKE LLC  
DB 37211/319  
PID 10310210

CB  
GRATE: 751.67

SDMH  
RIM: 752.88

CB  
GRATE: 752.36  
(OFFSET BOX,  
INV INACCESSIBLE)

WELL

WILORA LAKE RD  
VARIABLE WIDTH PUBLIC R/W

NAIL (FOUND)  
N.C.S.P.C.  
N: 536,283.52  
E: 1,478,091.73  
(NAD83/2011)  
CF: 0.99984160

- SIP ● SET IRON PIN
- EIP ○ EXISTING IRON PIN
- CP ⊗ CALCULATED POINT

REBAR  
(FOUND)

REBAR  
(FOUND)

10F3

# RIGHT OF WAY ABANDONMENT EXHIBIT OF A PORTION OF FIRST STREET

CITY OF CHARLOTTE, MECKLENBURG COUNTY, NORTH CAROLINA

CAROLINA SURVEYORS, INC  
P.O. BOX 267  
PINEVILLE, N.C. 28134  
(704) 889-7601  
FAX: (704) 889-7614  
CERTIFICATE OF AUTHORIZATION  
NC-C-1242 SC: 886



MAP BOOK 6 PAGE 329 DEED BOOK \_\_\_\_\_ PAGE \_\_\_\_\_  
DRAWN BY NB FIELD WORK MB/MM FIELD BOOK # \_\_\_\_\_

CARLSON\2022\BAT\Wilora Lake Road (8 parcels)  
PROJECT: 21-0608

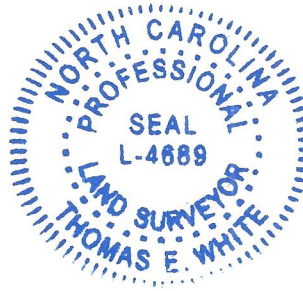
April 10, 2023

EXHIBIT "A"

Resolution Book 53, Page 706  
 THIS SURVEY OR PART OF THE 21st DAY OF NOVEMBER, 2022, AN ACTUAL SURVEY WAS MADE UNDER MY SUPERVISION OF THE PROPERTY SHOWN ON THIS PLAT, AND THAT THE BOUNDARY LINES AND THE IMPROVEMENTS, IF ANY, ARE AS SHOWN HEREON.

*Thomas E. White*  
 SIGNED \_\_\_\_\_  
 PROFESSIONAL LAND SURVEYOR

LINE TABLE		
LINE	BEARING	LENGTH
L1	N69°59'59"E	7.59'
L2	N69°59'59"E	220.27'
L3	S02°37'54"W	21.67'
L4	S02°37'54"W	21.67'
L5	S69°59'59"W	72.40'
L6	S69°59'59"W	168.82'
L7	S69°59'59"W	77.83'
L8	S69°59'59"W	137.35'
L9	S01°54'07"W	239.64'
L10	N69°59'59"E	48.13'



- SIP  SET IRON PIN
- EIP  EXISTING IRON PIN
- CP  CALCULATED POINT
- ▲ STAKE
- GV  GAS VALVE
- WV  WATER VALVE
- MB  MAIL BOX
- WM  WATER METER
- FH  FIRE HYDRANT
- SSMH  SANITARY SEWER MANHOLE
- SDMH  STORM DRAIN MANHOLE
- LOCATED TREE/SHRUB
- LP  LIGHT POLE
- TELECOMMUNICATION BOX
- TELE  TELECOMMUNICATIONS PEDESTAL
- PP  POWER POLE
- BFP  BACK FLOW PREVENTOR
- GW  GUY WIRE
- CB  CATCH BASIN
- DI  DROP INLET
- AC  AIR CONDITIONING
- PM  POWER METER
- x-x-x-x- CHAIN LINK FENCE
- - - - - STORM DRAIN PIPE
- - - - - OVERHEAD ELECTRIC
- s-s- SANITARY SEWER PIPE
- BOUNDARY LINE
- - - - - TIE LINE
- RIGHT OF WAY
- - - - - ADJOINING LINE (NOT SURVEYED)

CURVE TABLE				
CURVE	RADIUS	LENGTH	BEARING	CHORD
C1	283.80'	0.79'	N09°03'27"W	0.79'
C2	42.64'	33.73'	N34°10'42"E	32.85'
C3	40.50'	20.48'	N10°47'58"W	20.26'

SSE LINE TABLE		
LINE	BEARING	LENGTH
S1	N73°20'38"E	210.77'
S2	S02°37'54"W	14.52'
S3	S69°59'59"W	107.99'
S4	S73°20'38"W	119.14'
S5	N69°59'59"E	7.59'

SSE CURVE TABLE				
CURVE	RADIUS	LENGTH	BEARING	CHORD
SC1	42.64'	18.20'	N23°44'58"E	18.07'
SC2	40.50'	6.04'	N00°35'15"W	6.04'

SDE LINE TABLE		
LINE	BEARING	LENGTH
D1	N69°59'59"E	46.00'
D2	N79°21'34"E	92.16'
D3	N67°06'25"E	67.74'
D4	S35°03'01"E	2.44'
D5	N54°14'33"E	10.89'
D6	S02°37'54"W	22.21'
D7	S67°06'25"W	71.45'
D8	S79°21'34"W	138.44'

SDE CURVE TABLE				
CURVE	RADIUS	LENGTH	BEARING	CHORD
DC1	40.50'	12.63'	N16°20'57"W	12.58'

2 of 3



RIGHT OF WAY ABANDONMENT EXHIBIT  
 OF  
 A PORTION OF FIRST STREET

CITY OF CHARLOTTE, MECKLENBURG COUNTY, NORTH CAROLINA

MAP BOOK 6 PAGE 329 DEED BOOK \_\_\_\_\_ PAGE \_\_\_\_\_

DRAWN BY NB FIELD WORK MB/MM FIELD BOOK # \_\_\_\_\_

CAROLINA SURVEYORS, INC  
 P.O. BOX 267  
 PINEVILLE, N.C. 28134  
 (704) 889-7601  
 FAX: (704) 889-7614  
 CERTIFICATE OF AUTHORIZATION  
 NC-C-1242 SC: 886

CARLSON\2022\BAT\Wilora Lake Road (8 parcels)  
 PROJECT: 21-0608

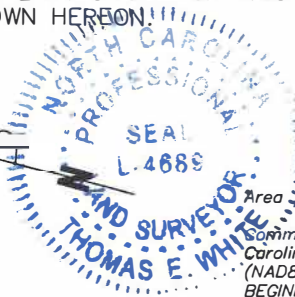
April 10, 2023

EXHIBIT "B"

Resolution Book 53, Page 707

THIS IS TO CERTIFY THAT ON THE 21st DAY OF NOVEMBER 2022, AN ACTUAL SURVEY WAS MADE UNDER MY SUPERVISION OF THE PROPERTY SHOWN ON THIS PLAT, AND THAT THE BOUNDARY LINES AND THE IMPROVEMENTS, IF ANY, ARE AS SHOWN HEREON.

N.C. GRID (NAD83/2011)



SIGNED [Signature] PROFESSIONAL LAND SURVEYOR

NOTES:

- 1. PID 10310106, 10310230, 10310223
- 2. THIS PROPERTY MAY BE SUBJECT TO ADDITIONAL RECORDED OR UNRECORDED EASEMENTS, SETBACKS, BUFFERS, RIGHTS-OF-WAY, IMPERVIOUS AREAS RESTRICTIONS AND/OR RESTRICTIVE COVENANTS, OTHER THAN SHOWN.
- 3. THIS PROPERTY IS LOCATED WITHIN AN AREA HAVING A ZONE DESIGNATION X BY THE FEDERAL EMERGENCY MANAGEMENT AGENCY (FEMA), ON FLOOD INSURANCE RATE MAP (FIRM) NO. 3710457300K, WITH A DATE OF IDENTIFICATION OF 2/19/2014.

ZONE X DEFINITION: "AREAS DETERMINED TO BE OUTSIDE THE 0.2% ANNUAL CHANCE FLOODPLAIN."

- 6. UNDERGROUND UTILITIES ARE NOT SHOWN. ALL UNDERGROUND UTILITIES ARE TO BE ACCURATELY MARKED BY OTHERS PRIOR TO CONSTRUCTION OR EXCAVATION.
- 7. LINES SHOWN REPRESENTING FENCES AND WALLS ARE MEASURED FROM THE APPROXIMATE CENTERLINE AND DO NOT ACCOUNT FOR THE THICKNESS, PLUMBNESS OR MEANDER OF THE FENCE UNLESS OTHERWISE STATED.
- 8. REGARDING LOCATION OF UNIMPROVED PORTION OF VERNEDALE ROAD:

THE SUBJECT PARCEL AND THE PARCELS ADJOINING TO THE SOUTH WERE PART OF THE SAME PARCEL OF LAND RECORDED IN DEED BOOK 928 PAGE 159. THE PARCELS TO THE SOUTH WERE CONVEYED OUT OF THAT TRACT BY DEED RECORDED IN DEED BOOK 1121, PAGE 21. THE SUBJECT PARCELS WERE PART OF A SUBSEQUENT OUTCONVEYANCE RECORDED IN DEED BOOK 1248, PAGE 448. NEITHER OF THE DESCRIPTIONS THEREIN FORM A MATHEMATICALLY CLOSED FIGURE. DEED BOOK 1121, PAGE 21 REFERS TO AN "EASEMENT FOR ROAD AND STREET PURPOSES" RECORDED IN DEED BOOK 1044, PAGE 447. IT APPEARS TO BE THE INTENT OF THESE TWO OUTCONVEYANCES TO FOLLOW THE CENTERLINE OF THIS ROAD AS ESTABLISHED IN DEED BOOK 1044, PAGE 447. THE CENTERLINE AS DESCRIBED IN THIS DEED CAN BE POSITIONED WITH A HIGHER LEVEL OF CERTAINTY THAN THE DESCRIPTIONS OF THE TWO OUTCONVEYANCES. IT IS THE OPINION OF THIS SURVEY THAT THE DESCRIPTIONS OF THE PARCELS TO THE SOUTH HAVE CARRIED FORWARD AN INCORRECT POSITION OF THE CENTERLINE OF THIS ROAD, AND AS A MATTER OF SURVEY, THE POSITION OF THE CENTERLINE OF THIS ROAD SHOWN HEREON AS "PER DB 1044/447" IS THE ORIGINALLY INTENDED POSITION.

Area #1:

Commencing at an existing nail in Wilora Lake Rd, said nail having North Carolina State Plane Coordinates of N:536,283.52 E:1,478,091.73 (NAD83/2011, CF: 0.99984160); thence four (4) calls to the point of BEGINNING: (1) with a bearing of N 01°54'07" E and a distance of 239.64' to a point; (2) with a curve to the left having a radius of 283.80' and an arc length of 0.79', and being chorded by a bearing of N 09°03'27" W and a distance of 0.79' to a point; (3) with a curve to the left having a radius of 42.64' and an arc length of 33.73', and being chorded by a bearing of N 34°10'42" E and a distance of 32.85' to a point; (4) with a bearing of N 69°59'59" E and a distance of 7.59' to a point, being the point of BEGINNING; thence with a curve to the left having a radius of 40.50' and an arc length of 20.48', and being chorded by a bearing of N 10°47'58" W, and a distance of 20.26' to a point on the existing northerly margin of the right of way of First St as shown on Map Book 6, Page 329; thence following the margin thereof with a bearing of N 69°59'59" E and a distance of 220.27' to a point; thence with a bearing of S 02°37'54" W and a distance of 21.67' to a point in the centerline of the right of way of First Street; thence following said centerline with a bearing of S 69°59'59" W and a distance of 77.83' to a point; thence continuing with said centerline with a bearing of S 69°59'59" W and a distance of 137.35' to a point; being the point of BEGINNING, having an area of 0.100 acres, more or less, as shown on a survey by Carolina Surveyors, Inc.

Area #2:

Commencing at an existing nail in Wilora Lake Rd, said nail having North Carolina State Plane Coordinates of N:536,283.52 E:1,478,091.73 (NAD83/2011, CF: 0.99984160); thence five (5) calls to the point of BEGINNING: (1) with a bearing of N 01°54'07" E and a distance of 239.64' to a point; (2) with a curve to the left having a radius of 283.80' and an arc length of 0.79', and being chorded by a bearing of N 09°03'27" W and a distance of 0.79' to a point; (3) with a curve to the left having a radius of 42.64' and an arc length of 33.73', and being chorded by a bearing of N 34°10'42" E and a distance of 32.85' to a point; (4) with a bearing of N 69°59'59" E and a distance of 7.59' to a point; (5) with a bearing of N 69°59'59" E and a distance of 137.35' to a point in the centerline of the right of way of First Street, being the point of BEGINNING; thence following said centerline with a bearing of N 69°59'59" E and a distance of 77.83' to a point; thence with a bearing of S 02°37'54" W and a distance of 21.67' to a point on the southerly margin of the right of way of First Street; thence following the margin thereof with a bearing of S 69°59'59" W and a distance of 72.40' to an existing driveshaft; thence with a bearing of N 11°43'58" W and a distance of 20.21' to a point; being the point of BEGINNING, having an area of 0.034 acres, more or less, as shown on a survey by Carolina Surveyors, Inc.

Area #3:

Commencing at an existing nail in Wilora Lake Rd, said nail having North Carolina State Plane Coordinates of N:536,283.52 E:1,478,091.73 (NAD83/2011, CF: 0.99984160); thence with a bearing of N 01°54'07" E and a distance of 239.64' to a point on the southerly margin of the right of way of First Street as shown on Map Book 6, Page 329, said point being the point of BEGINNING, thence with a curve to the left having a radius of 283.80' and an arc length of 0.79', and being chorded by a bearing of N 09°03'27" W and a distance of 0.79' to a point; thence with a curve to the left having a radius of 42.64' and an arc length of 33.73', and being chorded by a bearing of N 34°10'42" E and a distance of 32.85' to a point in the centerline of the right of way of First Street; thence following the centerline thereof two (2) calls: (1) with a bearing of N 69°59'59" E and a distance of 7.59' to a point; (2) with a bearing of N 69°59'59" E and a distance of 137.35' to a point; thence with a bearing of S 11°43'58" E and a distance of 20.21' to an existing driveshaft on the southerly margin of the right of way of First Street; thence following the margin of said right of way with a bearing of S 69°59'59" W and a distance of 168.82' to a point; being the point of BEGINNING, having an area of 0.071 acres, more or less, as shown on a survey by Carolina Surveyors, Inc.

3 of 3

RIGHT OF WAY ABANDONMENT EXHIBIT OF A PORTION OF FIRST STREET

CAROLINA SURVEYORS, INC P.O. BOX 267 PINEVILLE, N.C. 28134 (704) 889-7601 FAX: (704) 889-7614 CERTIFICATE OF AUTHORIZATION NC:C-1242 SC:886



SCALE N/A

MAP BOOK 6 PAGE 329 DEED BOOK PAGE

DRAWN BY NB FIELD WORK MB/MM FIELD BOOK #

CARLSON\2022\BAT\Wilora Lake Road (8 parcels) PROJECT: 21-0608



April 10, 2023

EXHIBIT "A"

Resolution Book 53, Page 708

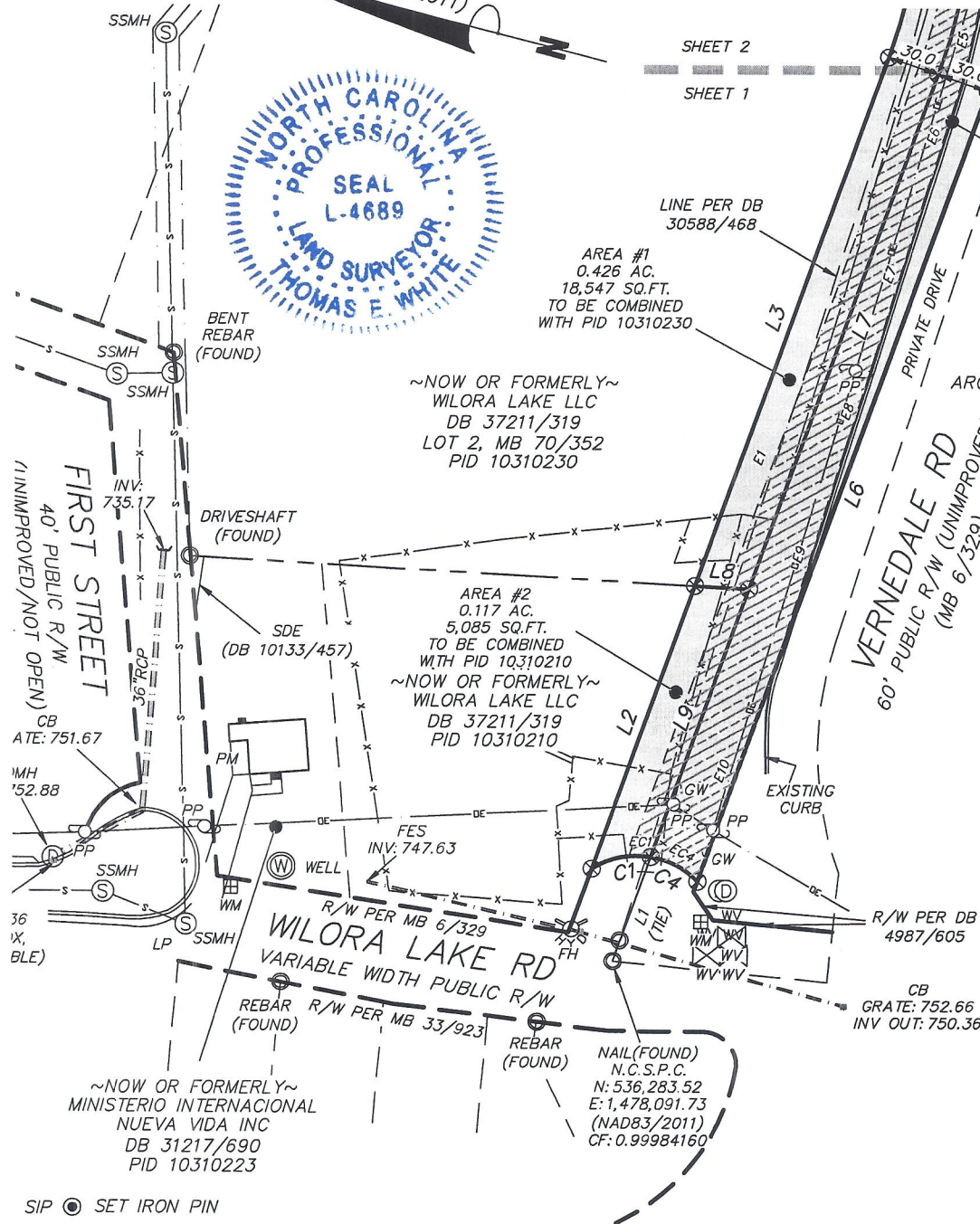
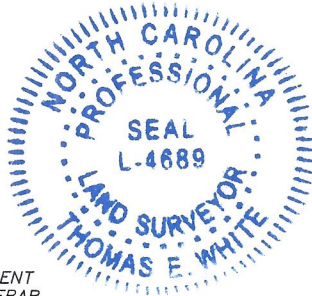
THIS IS TO CERTIFY THAT ON THE 21st DAY OF NOVEMBER 2022, AN ACTUAL SURVEY WAS MADE UNDER MY SUPERVISION OF THE PROPERTY SHOWN ON THIS PLAT, AND THAT THE BOUNDARY LINES AND THE IMPROVEMENTS, IF ANY, ARE AS SHOWN HEREON.

REVISED 3/2/23 FOR SIDEWALK & UTILITY EASEMENT

SIGNED \_\_\_\_\_ PROFESSIONAL LAND SURVEYOR

*Thomas E. White*

N.C. GRID (NAD83/2011)



AREA #3  
0.555 AC.  
24,166 SQ.FT.  
TO BE COMBINED  
WITH PID 10312113

AREA #1  
0.426 AC.  
18,547 SQ.FT.  
TO BE COMBINED  
WITH PID 10310230

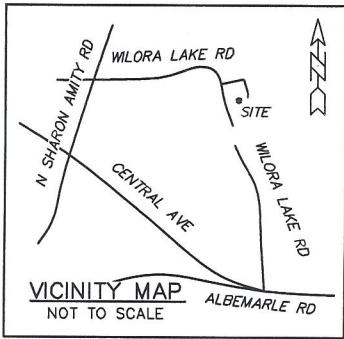
~NOW OR FORMERLY~  
WILORA LAKE LLC  
DB 37211/319  
LOT 2, MB 70/352  
PID 10310230

~NOW OR FORMERLY~  
ARC WILORA ASSISTED LIVING LLC  
DB 26652/340  
PID 10312111

AREA #2  
0.117 AC.  
5,085 SQ.FT.  
TO BE COMBINED  
WITH PID 10310210  
~NOW OR FORMERLY~  
WILORA LAKE LLC  
DB 37211/319  
PID 10310210

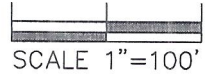
SIDEWALK &  
UTILITY EASEMENT  
TO BE RETAINED  
(28,753 SQ.FT.  
0.660 AC.)

- SIP ● SET IRON PIN
- EIP ○ EXISTING IRON PIN
- CP ⊗ CALCULATED POINT



- SIP ● SET IRON PIN
- EIP ○ EXISTING IRON PIN
- CP ⊗ CALCULATED POINT

SHEET 1 of 5



# RIGHT OF WAY ABANDONMENT EXHIBIT OF A PORTION OF VERNEDALE ROAD

CITY OF CHARLOTTE, MECKLENBURG COUNTY, NORTH CAROLINA

CAROLINA SURVEYORS, INC  
P.O. BOX 267  
PINEVILLE, N.C. 28134  
(704) 889-7601  
FAX: (704) 889-7614  
CERTIFICATE OF AUTHORIZATION  
NC-C-1242 SC: 886

MAP BOOK 6 PAGE 329 DEED BOOK \_\_\_\_\_ PAGE \_\_\_\_\_  
DRAWN BY NB FIELD WORK MB/MM FIELD BOOK # \_\_\_\_\_

CARLSON\2022\BAT\Wilora Lake Road (8 parcels)  
PROJECT: 21-0608

April 10, 2023

EXHIBIT "A"

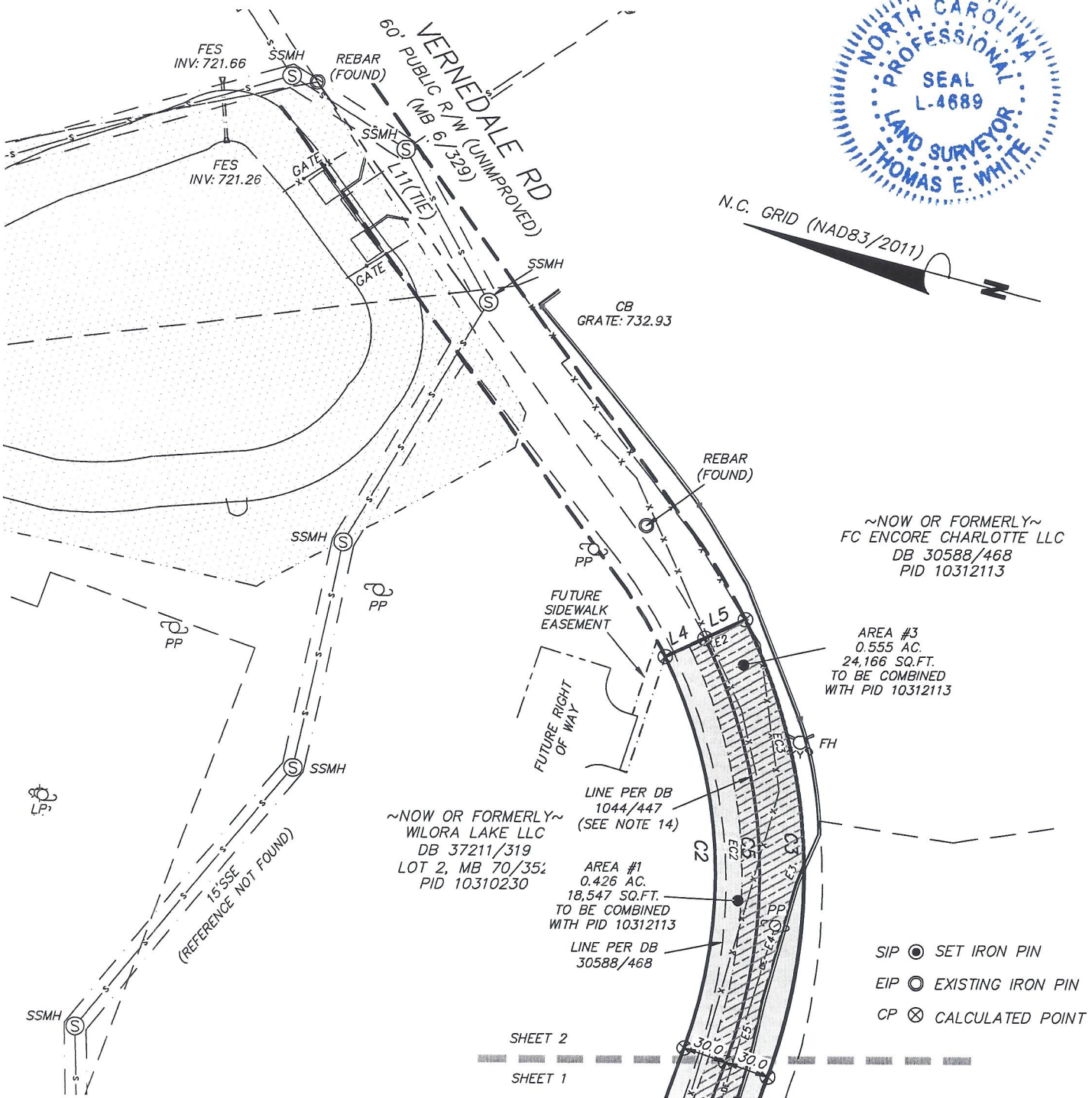
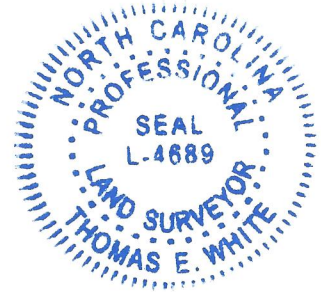
Resolution Book 53, Page 709

THIS IS TO CERTIFY THAT ON THE 21st DAY OF NOVEMBER 2022, AN ACTUAL SURVEY WAS MADE UNDER MY SUPERVISION OF THE PROPERTY SHOWN ON THIS PLAT, AND THAT THE BOUNDARY LINES AND THE IMPROVEMENTS, IF ANY, ARE AS SHOWN HEREON.

REVISED 3/2/23 FOR SIDEWALK & UTILITY EASEMENT

SIGNED \_\_\_\_\_  
PROFESSIONAL LAND SURVEYOR

*J. E. J.*



~NOW OR FORMERLY~  
FC ENCORE CHARLOTTE LLC  
DB 30588/468  
PID 10312113

AREA #3  
0.555 AC.  
24,166 SQ.FT.  
TO BE COMBINED  
WITH PID 10312113

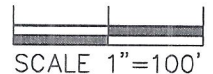
~NOW OR FORMERLY~  
WILORA LAKE LLC  
DB 37211/319  
LOT 2, MB 70/352  
PID 10310230

AREA #1  
0.426 AC.  
18,547 SQ.FT.  
TO BE COMBINED  
WITH PID 10312113

- SIP ● SET IRON PIN
- EIP ○ EXISTING IRON PIN
- CP ⊗ CALCULATED POINT

SHEET 2  
SHEET 1

SHEET 2 of 5



### RIGHT OF WAY ABANDONMENT EXHIBIT OF A PORTION OF VERNEDALE ROAD CITY OF CHARLOTTE, MECKLENBURG COUNTY, NORTH CAROLINA

CAROLINA SURVEYORS, INC  
P.O. BOX 267  
PINEVILLE, N.C. 28134  
(704) 889-7601  
FAX: (704) 889-7614  
CERTIFICATE OF AUTHORIZATION  
NC-C-1242 SC: 886

MAP BOOK 6 PAGE 329 DEED BOOK \_\_\_\_\_ PAGE \_\_\_\_\_  
DRAWN BY NB FIELD WORK MB/MM FIELD BOOK # \_\_\_\_\_

CARLSON\2022\BAT\Wilora Lake Road (8 parcels)  
PROJECT: 21-0608

April 10, 2023

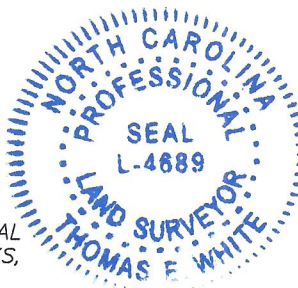
EXHIBIT "A"

Resolution Book 53, Page 710

THIS IS TO CERTIFY THAT ON THE 21st DAY OF NOVEMBER 2022, AN ACTUAL SURVEY WAS MADE UNDER MY SUPERVISION OF THE PROPERTY SHOWN ON THIS PLAT, AND THAT THE BOUNDARY LINES AND THE IMPROVEMENTS, IF ANY, ARE AS SHOWN HEREON.

REVISED 3/2/23 FOR SIDEWALK & UTILITY EASEMENT

SIGNED [Signature] PROFESSIONAL LAND SURVEYOR



NOTES:

- 1. PID 10310230, 10312113, 10310210
2. THIS PROPERTY MAY BE SUBJECT TO ADDITIONAL RECORDED OR UNRECORDED EASEMENTS, SETBACKS, BUFFERS, RIGHTS-OF-WAY, IMPERVIOUS AREAS RESTRICTIONS AND/OR RESTRICTIVE COVENANTS, OTHER THAN SHOWN.
3. THIS PROPERTY IS LOCATED WITHIN AN AREA HAVING A ZONE DESIGNATION X BY THE FEDERAL EMERGENCY MANAGEMENT AGENCY (FEMA), ON FLOOD INSURANCE RATE MAP (FIRM) NO. 3710457300K, WITH A DATE OF IDENTIFICATION OF 2/19/2014.
ZONE X DEFINITION: "AREAS DETERMINED TO BE OUTSIDE THE 0.2% ANNUAL CHANCE FLOODPLAIN."
6. UNDERGROUND UTILITIES ARE NOT SHOWN. ALL UNDERGROUND UTILITIES ARE TO BE ACCURATELY MARKED BY OTHERS PRIOR TO CONSTRUCTION OR EXCAVATION.
7. LINES SHOWN REPRESENTING FENCES AND WALLS ARE MEASURED FROM THE APPROXIMATE CENTERLINE AND DO NOT ACCOUNT FOR THE THICKNESS, PLUMBNESS OR MEANDER OF THE FENCE UNLESS OTHERWISE STATED.
8. REGARDING LOCATION OF UNIMPROVED PORTION OF VERNEDALE ROAD:

THE SUBJECT PARCEL AND THE PARCELS ADJOINING TO THE SOUTH WERE PART OF THE SAME PARCEL OF LAND RECORDED IN DEED BOOK 928 PAGE 159. THE PARCELS TO THE SOUTH WERE CONVEYED OUT OF THAT TRACT BY DEED RECORDED IN DEED BOOK 1121, PAGE 21. THE SUBJECT PARCELS WERE PART OF A SUBSEQUENT OUTCONVEYANCE RECORDED IN DEED BOOK 1248, PAGE 448. NEITHER OF THE DESCRIPTIONS THEREIN FORM A MATHEMATICALLY CLOSED FIGURE. DEED BOOK 1121, PAGE 21 REFERS TO AN "EASEMENT FOR ROAD AND STREET PURPOSES" RECORDED IN DEED BOOK 1044, PAGE 447. IT APPEARS TO BE THE INTENT OF THESE TWO OUTCONVEYANCES TO FOLLOW THE CENTERLINE OF THIS ROAD AS ESTABLISHED IN DEED BOOK 1044, PAGE 447. THE CENTERLINE AS DESCRIBED IN THIS DEED CAN BE POSITIONED WITH A HIGHER LEVEL OF CERTAINTY THAN THE DESCRIPTIONS OF THE TWO OUTCONVEYANCES. IT IS THE OPINION OF THIS SURVEY THAT THE DESCRIPTIONS OF THE PARCELS TO THE SOUTH HAVE CARRIED FORWARD AN INCORRECT POSITION OF THE CENTERLINE OF THIS ROAD, AND AS A MATTER OF SURVEY, THE POSITION OF THE CENTERLINE OF THIS ROAD SHOWN HEREON AS "PER DB 1044/447" IS THE ORIGINALLY INTENDED POSITION.

- SIP SET IRON PIN
EIP EXISTING IRON PIN
CP CALCULATED POINT
STAKE
GV GAS VALVE
WV WATER VALVE
MB MAIL BOX
WM WATER METER
FH FIRE HYDRANT
SSMH SANITARY SEWER MANHOLE
SDMH STORM DRAIN MANHOLE
LOCATED TREE/SHRUB
LP LIGHT POLE
TELECOMMUNICATION BOX
TELE TELECOMMUNICATIONS PEDESTAL
PP POWER POLE
BFP BACK FLOW PREVENTOR
GW GUY WIRE
CB CATCH BASIN
DI DROP INLET
AC AIR CONDITIONING
PM POWER METER
CHAIN LINK FENCE
STORM DRAIN PIPE
OVERHEAD ELECTRIC
SANITARY SEWER PIPE
BOUNDARY LINE
TIE LINE
RIGHT OF WAY
ADJOINING LINE (NOT SURVEYED)

SHEET 3 of 5



SCALE N/A

RIGHT OF WAY ABANDONMENT EXHIBIT OF A PORTION OF VERNEDALE ROAD

CITY OF CHARLOTTE, MECKLENBURG COUNTY, NORTH CAROLINA

MAP BOOK 6 PAGE 329 DEED BOOK PAGE DRAWN BY NB FIELD WORK MB/MM FIELD BOOK #

CAROLINA SURVEYORS, INC P.O. BOX 267 PINEVILLE, N.C. 28134 (704) 889-7601 FAX: (704) 889-7614 CERTIFICATE OF AUTHORIZATION NC-C-1242 SC:886

CARLSON\2022\BAT\Wilora Lake Road (8 parcels) PROJECT: 21-0608

THIS IS TO CERTIFY THAT ON THE 21st DAY OF NOVEMBER 2022, AN ACTUAL SURVEY WAS MADE UNDER MY SUPERVISION OF THE PROPERTY SHOWN ON THIS PLAT, AND THAT THE BOUNDARY LINES AND THE IMPROVEMENTS, IF ANY, ARE AS SHOWN HEREON.

REVISED 3/2/23 FOR SIDEWALK & UTILITY EASEMENT

SIGNED [Signature] PROFESSIONAL LAND SURVEYOR



Area #1

Commencing at an existing nail in Wilora Lake Rd, said nail having North Carolina State Plane Coordinates of N: 536,283.52 E: 1,478,091.73 (NAD83/2011, CF: 0.99984160); thence two (2) calls to the point of beginning: (1) with a bearing of S 85°34'31" E and a distance of 65.34' to a point in the centerline of the right of way of Vernedale Rd as described in Deed Book 1044, Page 447; (2) following said centerline with a bearing of S 85°34'31" E and a distance of 167.42' to a point; being the point of BEGINNING; thence with a bearing of N 11°43'58" W and a distance of 31.23' to a point on the northerly margin of the right of way of Vernedale Road; thence following the northerly margin thereof two (2) calls: (1) with a bearing of S 85°34'31" E and a distance of 330.21' to a point; (2) with a curve to the left having a radius of 357.22' and an arc length of 280.59', and being chorded by a bearing of N 71°55'23" E and a distance of 273.43' to a point; thence with a bearing of S 40°34'45" E and a distance of 30.00' to a point in the centerline of the right of way of Vernedale Road; thence following said centerline two (2) calls: (1) with a curve to the right having a radius of 387.22' and an arc length of 304.15', and being chorded by a bearing of S 71°55'23" W and a distance of 296.39' to a point; (2) with a bearing of N 85°34'31" W and a distance of 321.52' to a point; being the point of BEGINNING, having an area of 0.426 acres, more or less, as shown on a survey by Carolina Surveyors, Inc.

Table with 3 columns: LINE, BEARING, LENGTH. Rows L1 through L9.

Table with 5 columns: CURVE, RADIUS, LENGTH, BEARING, CHORD. Rows C1 through C5.

Area #2

Commencing at an existing nail in Wilora Lake Rd, said nail having North Carolina State Plane Coordinates of N: 536,283.52 E: 1,478,091.73 (NAD83/2011, CF: 0.99984160), thence with a bearing of S 85°34'31" E and a distance of 65.34' to a point in the centerline of the right of way of Vernedale Rd as described in Deed Book 1044, Page 447, and said point being the point of BEGINNING; thence with a curve to the left having a radius of 47.91' and an arc length of 35.82', and being chorded by a bearing of N 26°33'25" W and a distance of 34.99' to a point on the northerly margin of the right of way of Vernedale Road; thence following said margin with a bearing of S 85°34'31" E and a distance of 176.74' to a point; thence with a bearing of S 11°43'58" E and a distance of 31.23' to a point in the centerline of the right of way of Vernedale Road; thence following said centerline with a bearing of N 85°34'31" W and a distance of 167.42' to a point; being the point of BEGINNING, having an area of 0.117 acres, more or less, as shown on a survey by Carolina Surveyors, Inc.

Area #3:

Commencing at an existing nail in Wilora Lake Rd, said nail having North Carolina State Plane Coordinates of N: 536,283.52 E: 1,478,091.73 (NAD83/2011, CF: 0.99984160), thence with a bearing of S 85°34'31" E and a distance of 65.34' to a point in the centerline of the right of way of Vernedale Rd as described in Deed Book 1044, Page 447, and said point being the point of BEGINNING; thence following the centerline of said right of way two (2) calls: (1) with a bearing of S 85°34'31" E and a distance of 488.93' to a point; (2) with a curve to the left having a radius of 387.22' and an arc length of 304.15', and being chorded by a bearing of N 71°55'23" E and a distance of 296.39' to a point; thence with a bearing of S 40°34'45" E and a distance of 30.00' to a point on the southerly margin of the right of way of Vernedale Road; thence following the margin thereof two (2) calls: (1) with a curve to the right having a radius of 417.22' and an arc length of 327.72', and being chorded by a bearing of S 71°55'23" W and a distance of 319.36' to a point; (2) with a bearing of N 85°34'31" W and a distance of 493.64' to a point; thence with a curve to the left having a radius of 47.91' and an arc length of 30.90', and being chorded by a bearing of N 13°20'20" E and a distance of 30.37'; being the point of BEGINNING, having an area of 0.555 acres, more or less, as shown on a survey by Carolina Surveyors, Inc.

SHEET 4 of 5

RIGHT OF WAY ABANDONMENT EXHIBIT OF A PORTION OF VERNEDALE ROAD

CAROLINA SURVEYORS, INC P.O. BOX 267 PINEVILLE, N.C. 28134 (704) 889-7601 FAX: (704) 889-7614 CERTIFICATE OF AUTHORIZATION NC C-1242 SC: 886



SCALE N/A

CITY OF CHARLOTTE, MECKLENBURG COUNTY, NORTH CAROLINA

MAP BOOK 6 PAGE 329 DEED BOOK PAGE

DRAWN BY NB FIELD WORK MB/MM FIELD BOOK #

CARLSON\2022\BAT\Wilora Lake Road (8 parcels) PROJECT: 21-0608

April 10, 2023

EXHIBIT "B"

Resolution Book 53, Page 712

THIS IS TO CERTIFY THAT, ON THE 21st DAY OF NOVEMBER 2022, AN ACTUAL SURVEY WAS MADE UNDER MY SUPERVISION OF THE PROPERTY SHOWN ON THIS PLAT, AND THAT THE BOUNDARY LINES AND THE IMPROVEMENTS, IF ANY, ARE AS SHOWN HEREON.

REVISED 3/2/23 FOR SIDEWALK & UTILITY EASEMENT

SIGNED

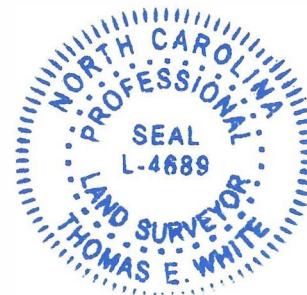
PROFESSIONAL LAND SURVEYOR

Sidewalk & Utility Easement

Commencing at an existing nail in Wilora Lake Rd, said nail having North Carolina State Plane Coordinates of N: 536,283.52 E: 1,478,091.73 (NAD83/2011, CF: 0.99984160); thence two (2) calls to the point of beginning: (1) with a bearing of S 85°34'31" E and a distance of 65.34' to a point in the centerline of the right of way of Vernedale Rd as described in Deed Book 1044, Page 447; thence with a curve to the left having a radius of 47.91' and an arc length of 12.59', and being chorded by a bearing of N 12°39'59" W, and a distance of 12.55' to a point; thence with a bearing of S 85°34'31" E and a distance of 492.62' to a point; thence with a curve to the left having a radius of 375.22' and an arc length of 294.73', and being chorded by a bearing of N 71°55'23" E, and a distance of 287.21' to a point; thence with a bearing of S 40°34'45" E and a distance of 42.00' to a point; thence with a curve to the right having a radius of 417.22' and an arc length of 176.53', and being chorded by a bearing of S 61°32'31" W, and a distance of 175.21' to a point; thence with a bearing of N 83°03'06" W and a distance of 14.78' to a point; thence with a bearing of N 89°42'37" W and a distance of 84.50' to a point; thence with a bearing of S 87°24'12" W and a distance of 48.56' to a point; thence with a bearing of N 88°08'39" W and a distance of 66.20' to a point; thence with a bearing of N 88°04'53" W and a distance of 106.15' to a point; thence with a bearing of N 87°55'18" W and a distance of 52.13' to a point; thence with a bearing of N 88°04'11" W and a distance of 137.23' to a point; thence with a bearing of N 85°34'31" W and a distance of 132.94' to a point; thence with a curve to the left having a radius of 47.91' and an arc length of 30.90', and being chorded by a bearing of N 13°20'20" E, and a distance of 30.37'; being the point of BEGINNING, having an area of 0.660 acres more or less, as shown on a survey by Carolina Surveyors, Inc.

EASEMENT LINE TABLE		
LINE	BEARING	LENGTH
E1	S85°34'31"E	492.62'
E2	S40°34'45"E	42.00'
E3	N83°03'06"W	14.78'
E4	N89°42'37"W	84.50'
E5	S87°24'12"W	48.56'
E6	N88°08'39"W	66.20'
E7	N88°04'53"W	106.15'
E8	N87°55'18"W	52.13'
E9	N88°04'11"W	137.23'
E10	N85°34'31"W	132.94'

EASEMENT CURVE TABLE				
CURVE	RADIUS	LENGTH	BEARING	CHORD
EC1	47.91'	12.59'	N12°39'59"W	12.55'
EC2	375.22'	294.73'	N71°55'23"E	287.21'
EC3	417.22'	176.53'	S61°32'31"W	175.21'
EC4	47.91'	30.90'	N13°20'20"E	30.37'



SHEET 5 of 5



SCALE N/A

RIGHT OF WAY ABANDONMENT EXHIBIT OF A PORTION OF VERNEDALE ROAD

CITY OF CHARLOTTE, MECKLENBURG COUNTY, NORTH CAROLINA

MAP BOOK 6 PAGE 329 DEED BOOK PAGE DRAWN BY NB FIELD WORK MB/MM FIELD BOOK #

CAROLINA SURVEYORS, INC P.O. BOX 267 PINEVILLE, N.C. 28134 (704) 889-7601 FAX: (704) 889-7614 CERTIFICATE OF AUTHORIZATION NC.C-1242 SC:886

CARLSON\2022\BAT\Wilora Lake Road (8 parcels) PROJECT: 21-0608

RESOLUTION TO CLOSE an Alleyway off Buchanan Street IN THE CITY OF CHARLOTTE, MECKLENBURG COUNTY, NORTH CAROLINA

---

WHEREAS, pursuant to the provisions of Chapter 160A-299 of the General Statutes of North Carolina, the City Council has caused to be published a Resolution of Intent to close an Alleyway off Buchanan Street which calls for a public hearing on the question; and

WHEREAS, the petitioner has caused a copy of the Resolution of Intent to close an Alleyway off Buchanan Street to be sent by registered or certified mail to all owners of property adjoining said right-of-way and prominently posted a notice of the closing and public hearing in at least two places along said street or alleys, all as required by G.S.160A-299; and

WHEREAS, the city may reserve its right, title, and interest in any utility improvement or easement within a street closed pursuant to G.S.160A-299; and

WHEREAS, an easement shall be reserved in favor of the City of Charlotte over, upon, and under the area petitioned to be abandoned to access (ingress, egress, and regress), maintain, install, protect, operate, add to, modify, and replace Storm Water facilities, the existing facilities are noted on the attached map marked "Exhibit A"; and

WHEREAS, an easement shall be reserved in favor of AT&T over, upon, and under the area petitioned to be abandoned to access (ingress, egress, and regress), maintain, install, protect, operate, add to, modify, and replace AT&T facilities, the existing facilities are noted on the attached map marked "Exhibit A"; and

WHEREAS, an easement shall be reserved in favor of Duke Energy over, upon, and under the area petitioned to be abandoned to access (ingress, egress, and regress), maintain, install, protect, operate, add to, modify, and replace Duke Energy facilities, the existing facilities are noted on the attached map marked "Exhibit A"; and

WHEREAS, the public hearing was held on the 10th day of April 2023, and City Council determined that closing an Alleyway off Buchanan Street is not contrary to the public interest, and that no individual, firm or corporation owning property in the vicinity thereof will be deprived of reasonable means of ingress and egress to their or its property.

NOW, THEREFORE, BE IT RESOLVED by the City Council of the City of Charlotte, North Carolina at its regularly assembled meeting of February 27, 2023, that the Council hereby orders the closing an Alleyway off Buchanan Street in the City of Charlotte, Mecklenburg County, North Carolina as shown in the map marked "Exhibit A," and is more particularly described by metes and bounds in the document marked "Exhibit B" and "Exhibit C" all of which are attached hereto and made a part hereof.

BE IT FURTHER RESOLVED that a certified copy of this Resolution be filed in the Office of the Register of Deeds for Mecklenburg County, North Carolina.

**CERTIFICATION**

I, Stephanie C. Kelly, City Clerk of the City of Charlotte, North Carolina, DO HEREBY CERTIFY that the foregoing is a true and exact copy of a Resolution adopted by the City Council of the City of Charlotte, North Carolina, in regular session convened on the 10<sup>th</sup> day of April 2023, the reference having been made in Minute Book 157 and recorded in full in Resolution Book 53, Page(s) 713-716.

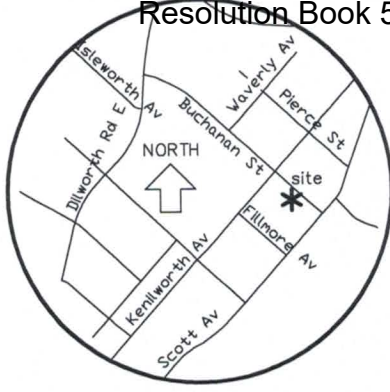
WITNESS my hand and the corporate seal of the City of Charlotte, North Carolina, this 10<sup>th</sup> day of April 2023.



*Stephanie C. Kelly*

---

Stephanie C. Kelly, City Clerk, MMC, NCCMC



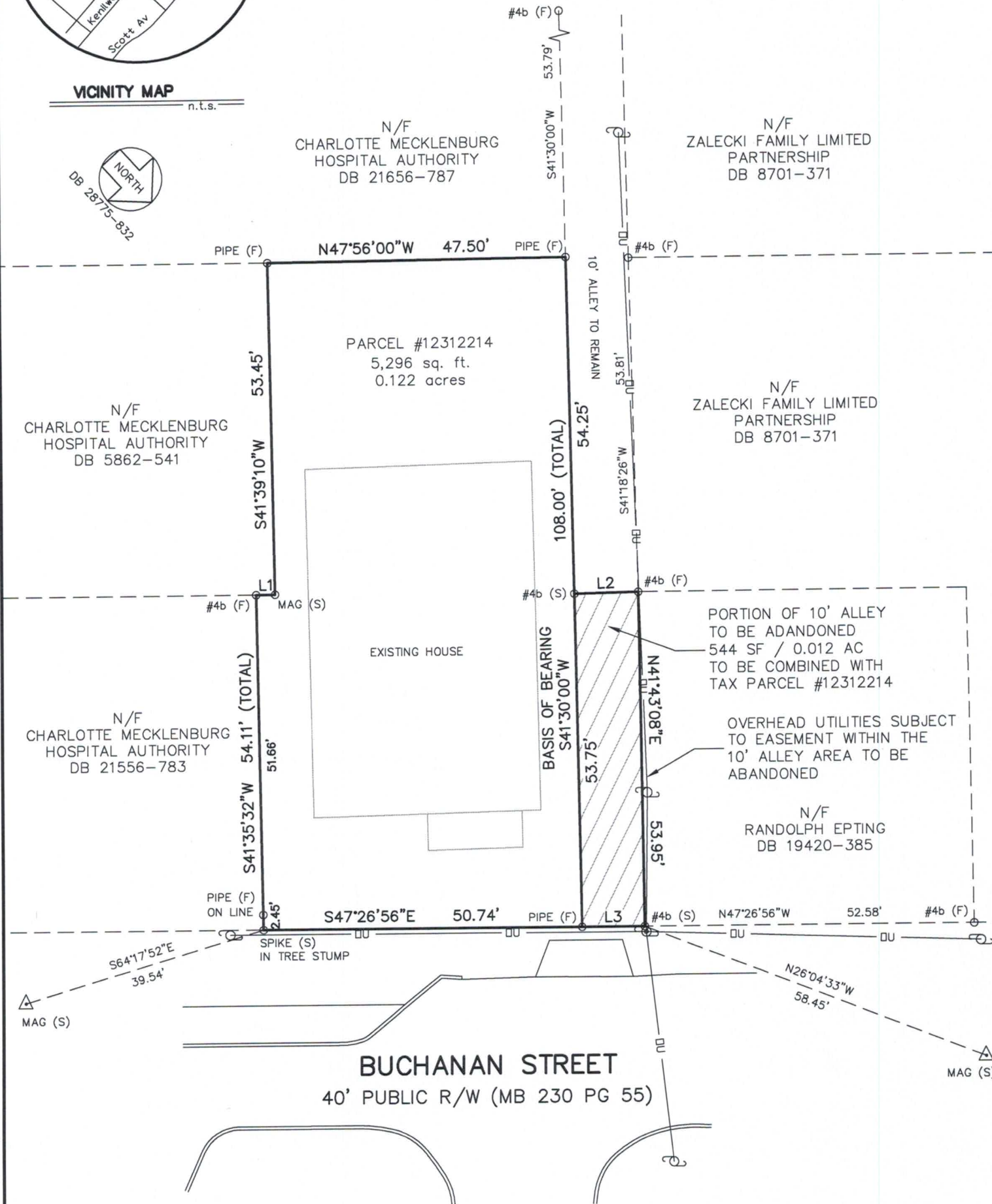
VICINITY MAP  
 n.t.s.



- O PROPERTY CORNER
- (F) FOUND
- (S) SET
- #4b No. 4 REBAR
- #5b No. 5 REBAR
- MAG SURVEY NAIL
- N/F NOW OR FORMERLY
- R/W RIGHT OF WAY
- OU- OVERHEAD UTILITIES
- X- FENCE
- U UTILITY POLE

LINE		
LINE	BEARING	LENGTH
L1	N48°05'26"W	3.00
L2	N48°36'38"W	10.21
L3	S47°26'56"E	10.00

F.E.M.A. - F.I.R.M. INFORMATION  
 COMMUNITY NUMBER: 370159 MAP NUMBER: 3710454300L  
 EFFECTIVE DATE: 09/02/2015 ZONE: X (OUT)



THIS PROPERTY MAY BE SUBJECT TO EASEMENTS AND/OR RIGHTS-OF-WAY EITHER RECORDED OR IMPLIED.  
 OTHER IMPROVEMENTS EXIST ON THE SUBJECT PROPERTY NOT SHOWN HEREON.

0" 1" SCALE: 1" = 20'

**Lucas-Forman Incorporated**  
 Land Surveying  
 Planning & Engineering  
 N.C. License C-1215  
 4000 Stuart Andrew Boulevard  
 Charlotte, North Carolina 28217  
 P.O. Box 11386 28220-1386  
 (704) 527-6626 Fax 527-9640

**EXHIBIT A - ALLEY ABANDONMENT**  
 of  
**1316 BUCHANAN STREET**  
 CHARLOTTE, MECKLENBURG COUNTY, N.C.

LOT P7 & 8 BLOCK 4 MAPBOOK 230 PAGE 55  
 SUBDIVISION EAST DILWORTH  
 DEED REFERENCE: 28775-832  
 for  
 HECTOR MACDONALD

SURVEYED: M.M. AVERY DATE: 03/28/2023 REV.  
 DRAWN: J.T. EASTERWOOD JOB# 23033

SEAL

NORTH CAROLINA  
 PROFESSIONAL  
 LAND SURVEYOR  
 ARTHUR F. FORMAN  
 SEAL  
 L-3141



Resolution to Close An Alleyway off of Buchanan Street

EXHIBIT B - LEGAL DESCRIPTION

Being located in the City of Charlotte, Mecklenburg County, North Carolina and being more particularly described as follows:

Alley Abandonment of Portion of 10' Alley as shown on Map Book 230 Page 55.

Beginning at a found pipe in the southwest margin of Buchanan Street (40' Public Right-Of-Way as shown on Map Book 230 Page 55 in the Mecklenburg Public Registry) and being the common corner of Hector MacDonald (Deed Book 28775 Page 832) and a 10' alley; Thence from said beginning point with the common line Hector MacDonald and said 10' alley S 41-30-00 W 53.75 feet to a rebar set; Thence crossing said 10' alley N 48-36-38 W 10.21 feet to a found rebar being the common corner with Zalecki Family Limited Partnership (Deed Book 8701 Page 371) and Randolph Epting (Deed Book 19420 Page 385); Thence with common line of Randolph Epting and said 10' alley N 41-43-08 E 53.95 feet to a rebar set in the southwest margin of Buchanan Street; Thence with the margin of Buchanan Street S 47-26-56 E 10.00 feet to the point and place of beginning containing 544 square feet / 0.012 acres and being all as shown on the Exhibit A – Alley Abandonment by Arthur F. Forman (L-3141) dated 03/28/2023.

**RESOLUTION APPROVING AN INTERLOCAL AGREEMENT BETWEEN THE CITY OF CHARLOTTE AND MECKLENBURG COUNTY FOR A TAX INCREMENT REIMBURSEMENT FOR DEVELOPMENT OF EASTLAND**

**WHEREAS**, C4 Development, LLC, (the “Developer”) is proposing to redevelop the old Eastland Mall site in the City of Charlotte (the “City”) to include physical infrastructure such as structured parking, public streets, curb and gutter, sidewalks, traffic control and other associated facilities; and

**WHEREAS**, significant infrastructure improvements are needed to support the project, and in order to make the project financially viable, the Developer has requested a public/private partnership to fund an amount not to exceed \$11,000,000 in public improvements which will be reimbursed by the City and Mecklenburg County (“County”) by way of a twenty year, 45% tax increment grant (“TIG”); and

**WHEREAS**, the County approved its participation in the public/private partnership at its \_\_\_\_\_ meeting of the Board of County Commissions; and

**WHEREAS**, under Article 20 of Chapter 160A of the North Carolina General Statutes, as amended, cities and counties are authorized to jointly enter into interlocal cooperation undertakings with other local governments for the joint exercise of any power, function, public enterprise, right, privilege, or immunity of local governments in North Carolina; and

**WHEREAS**, the City has the authority to construct and improve streets (G.S. 160A-296(a)(3)), the City and County have the authority to enter into infrastructure reimbursement agreements with private developers and property owners (SL-2001-329; G.S. 153A-451) and the City has the authority to finance such infrastructure (G.S. 160A-20); and

**WHEREAS**, the City will enter into an Infrastructure Reimbursement Agreement with the Developer pursuant to which the City will acquire and pay for certain Public Improvements for the project; and

**WHEREAS**, the County will participate in funding the Public Improvements pursuant to an Interlocal Agreement by making TIG payments to the City.

**NOW THEREFORE, BE IT RESOLVED** by the City Council of the City of Charlotte, that the Council does hereby approve an Interlocal Agreement with Mecklenburg County for a tax increment grant and authorized the City Manager to negotiate and execute a contract for the same.

ADOPTED the 10th day of April, 2023

**CERTIFICATION**

I, Stephanie C. Kelly, City Clerk of the City of Charlotte, North Carolina, DO HEREBY CERTIFY that the foregoing is a true and exact copy of a Resolution adopted by the City Council of the City of Charlotte, North Carolina, in regular session convened on the 10<sup>th</sup> day of April 2023, the reference having been made in Minute Book 157 and recorded in full in Resolution Book 53, Page(s) 716A-716G.

WITNESS my hand and the corporate seal of the City of Charlotte, North Carolina, this 10<sup>th</sup> day of April 2023.



---

Stephanie C. Kelly, City Clerk, MMC, NCCMC

**EASTLAND INFRASTRUCTURE REIMBURSEMENT  
INTERLOCAL AGREEMENT**

This Interlocal Agreement, made \_\_\_\_, 2023 (“Agreement”), by and between the **CITY OF CHARLOTTE**, a municipal corporation organized under the laws of the State of North Carolina (the “City”) and **THE COUNTY OF MECKLENBURG**, a political subdivision of the State of North Carolina ( “County”).

**WITNESSETH:**

**WHEREAS**, the City has contemporaneously with this Agreement entered into a Tax Increment Grant Infrastructure Reimbursement Agreement with Developer, which agreement contains and sets forth recitals which are incorporated herein by reference;

**WHEREAS**, under Article 20 of Chapter 160A of the North Carolina General Statutes, as amended, cities and counties are authorized to enter into interlocal cooperation undertakings with other local governments for the joint exercise of any power, function, public enterprise, right, privilege, or immunity of local governments in North Carolina;

**WHEREAS**, the City has the authority to construct streets and roads (G.S. 160A-296(a)(3)), the City and the County have the authority to enter into infrastructure reimbursement agreements with developers and property owners (SL 2001-329; G.S. 153A-451), and the City has the authority to finance such infrastructure (G.S. 160A-20);

**WHEREAS**, the parties hereto desire to set forth their agreement herein;

**NOW, THEREFORE**, in consideration of the mutual covenants and agreements set forth herein, the parties agree as follows:

**ARTICLE I**

The following terms have the meanings as set forth herein, unless the context otherwise requires:

“*Agreement*” means this Interlocal Agreement between the City and the County, and any amendment or supplement thereto.

“*Baseline Tax (City)*” refers to the total real and personal ad valorem taxes assessed by the City against the Increment District for the Baseline Tax Year.

“*Baseline Tax (County)*” refers to the total real and personal ad valorem taxes assessed by the County against the Increment District for the Baseline Tax Year.

“*Baseline Tax Year*” refers to the City’s and County’s 2021 Fiscal Year (i.e. the period from July 1, 2021 to June 30, 2022) in connection with which the valuation of the Increment District for tax purposes was established as of January 1, 2021.

“*Developer*” means C4 Development, LLC, a North Carolina limited liability company (together with its designated affiliates, successors and assigns).

“*Fiscal Year*” means the fiscal year of the City and County which extends from July 1 to June 30<sup>th</sup> of the immediately following calendar year. For example, fiscal year 2022 extends from July 1, 2021 to June 30, 2022.

“*Increment District*” shall mean the area and properties depicted and identified on Exhibit A to the Infrastructure Reimbursement Agreement to the extent that such properties are located within the City and the County.

“*Incremental Tax Increase Amount (City)*” means, as to each Fiscal Year after the Baseline Tax Year, the amount by which (i) the total real and personal ad valorem taxes levied by the City on the Increment District for such Fiscal Year and collected by February 1 of the Fiscal Year (including any delinquent taxes collected for a prior fiscal year) exceed (ii) the Baseline Tax (City).

“*Incremental Tax Increase Amount (County)*” shall mean, as to the Fiscal Year after the Baseline Tax Year, the amount by which (i) the total real and personal ad valorem taxes levied by the County on the Increment District for such Fiscal Year and collected by February 1 of the Fiscal Year (including delinquent taxes collected for a prior fiscal year) exceed (ii) the Baseline Tax (County).

“*Infrastructure Reimbursement Agreement*” means the agreement between the City and Developer that requires the Developer to construct certain Public Improvements and the City to fund a portion of such improvements.

“*Installment*” means each annual payment of principal and interest due and payable pursuant to City’s infrastructure reimbursement agreement with Developer.

“*Installment Commencement Notice*” means written notice given by Developer to the City of Developer’s desire for the City to commence paying to the Developer the Installments.

“*Interlocal Act*” means Section 160A-460 et seq. of the General Statutes of North Carolina, as amended.

“*Public Improvements*” means those roadway, streetscape, sidewalk, landscaping, irrigation, signage, traffic signal facilities, parking and other similar improvements for the benefit of the City described in Exhibit B attached to the Infrastructure Reimbursement Agreement.

“*Tax Increment Payment*” means a payment determined by some percentage of incremental taxes from within the Increment District pursuant to an Infrastructure Reimbursement Agreement.

## ARTICLE II

Under the laws of the State of North Carolina, the City has the authority to build and otherwise improve streets (G.S. 160A-296(a)(3)), the City and the County have the authority to reimburse property owners and developers for the design and construction of municipal infrastructure including streets (SL 2001-329; G.S. 153A-451). The City and the County are entering into this Agreement under the Interlocal Act to cooperate in the design, construction, and financing of the Public Improvements contemplated in the Infrastructure Reimbursement Agreement.

## ARTICLE III

### REIMBURSEMENT FOR THE INFRASTRUCTURE IMPROVEMENTS

3.1 *Reimbursement.* The City will be responsible for acquiring the Public Improvements from the Developer pursuant to the terms of the Infrastructure Reimbursement Agreement. Other than as provided in this Interlocal Agreement, the County will have no obligation to pay for the acquisition or financing of the Public Improvements.

3.2 *County incremental tax contribution.*

- a. The County shall make annual payments to the City on or before March 1 beginning in the calendar year that immediately follows the delivery by the Developer to the City of the Installment Commencement Notice.
- b. Annual payments shall be an amount equal to 45% of the Incremental Tax Increase Amount (County).
- c. The County's payment obligations shall terminate upon the earlier of: (i) payment by the City to the Developer of all outstanding principal and interest pursuant to the Infrastructure Reimbursement Agreement; or (ii) the twentieth (20<sup>th</sup>) annual payment.
- d. In the year in which a payment by the City to Developer pursuant to the Infrastructure Reimbursement Agreement will satisfy the City's repayment obligation, the County's payment to the City shall be that percentage of Incremental Tax Increase Amount (County) that together with the same percentage of Incremental Tax Increase Amount (City) will be sufficient to satisfy the City's repayment obligation to Developer.

3.3. *Method of payment.* The County shall make all payments pursuant to this Agreement directly to the City and payments shall not be made in whole or in part as a set off to other obligations of the City to the County or the County to the City. Interest for late payments by the County shall accrue at a rate equal to the interest rate established for the City's reimbursement of Developer pursuant to the Infrastructure Reimbursement Agreement. In the event of an overpayment to Developer that results in Developer's repayment of any portion of an annual payment, the City shall refund the County's portion of the overpayment within thirty (30) days of receiving the Developer's repayment.

ARTICLE IV  
DURATION

This Agreement will terminate when the City's obligations under the Infrastructure Reimbursement Agreement are satisfied or said agreement is earlier terminated.

ARTICLE V  
MISCELLANEOUS

5.1. Amendment. This Agreement may be amended through a supplement approved in writing by the City and the County.

5.2. Severability. If any section of this Agreement is deemed to be illegal or otherwise unenforceable, it is the intent of the parties hereto that all other provisions of this Agreement shall remain in full force and effect.

5.3. Governing Law. This Agreement is to be governed by and interpreted in accordance with the laws of the State of North Carolina.

5.4. Time is of the essence. Time is of the essence in this Agreement.

5.5. Execution in Multiple Counterparts. This Agreement may be executed in multiple counterparts, each of which constitutes a completed document.

5.6. Effective Date. This Agreement takes effect on its execution by the City and the County.

IN WITNESS WHEREOF, the City Manager of the City and the County Manager of the County have each executed this Interlocal Agreement to evidence the agreement of the parties hereto and the City Clerk and the Clerk of the Board of County Commissioners have affixed the seal of the City and the County, as applicable to this Interlocal Agreement.

**CITY OF CHARLOTTE**

**COUNTY OF MECKLENBURG**

\_\_\_\_\_  
Attest:

\_\_\_\_\_  
Attest:

\_\_\_\_\_  
City Clerk

\_\_\_\_\_  
Clerk to Board of County Commissioners

(SEAL)

(SEAL)

This instrument has been pre-audited  
in the manner required by the “Local  
Government Budget and Fiscal  
Control Act.”

No Pre-Audit Required.

\_\_\_\_\_  
County Finance Director

\_\_\_\_\_  
City Finance Director

APPROVED AS TO FORM

\_\_\_\_\_  
County Attorney



**RESOLUTION AUTHORIZING A RIGHT OF FIRST REFUSAL  
501 E. TRADE STREET**

---

**WHEREAS**, the City of Charlotte (“City”) owns that certain parcel of real property located at a 501 E. Trade Street, bounded by Davidson Street, E. 5<sup>th</sup> Street, Caldwell Street and E. Trade Street (Tax Parcel No. 223-481-02), hereinafter referred to as the “Gravel Lot”;

**WHEREAS**, City proposes to convey to Charlotte Arena Operations, LLC, a Delaware limited liability company (“CAO”), a right of first refusal (“ROFR”) to purchase the Gravel Lot upon the hereinbelow material terms; and

**WHEREAS**, pursuant to §8.22 of the City of Charlotte Charter, notice of the proposed ROFR was advertised at least ten (10) days prior to the adoption of this Resolution.

**NOW THEREFORE, BE IT RESOLVED** by the City Council for the City of Charlotte, that it hereby authorizes conveyance of a right of first refusal to purchase the Gravel Lot, to CAO upon the following material terms:

A) The term of the ROFR shall commence on the date a temporary certificate of occupancy is issued for the Performance Enhancement Center planned in connection with the City’s Arena Renovation Project (“ROFR Period”);

B) Prior to entering into any purchase agreement for the Gravel Lot during the ROFR Period, the City shall first offer, by written notice to CAO (the “ROFR Notice”), to sell the Gravel Lot to CAO upon the same material terms, provisions and conditions, including without limitation the gross purchase price, development purpose and timeline, and all such other material terms and conditions of the sale, as set forth in an offer by the City to sell the Gravel Lot to a third party or a bona fide third party offer which the City is willing to accept (each a “Third-Party Offer”) for the Gravel Lot. CAO shall have until thirty (30) days after receipt of the ROFR Notice (the “Election Period”), to provide the City with written notice of its election to purchase the Gravel Lot on the same material terms, provisions, and conditions as the Third-Party Offer (the “ROFR Election Notice”). Notwithstanding the foregoing, so long as CAO’s proposed development purpose set forth in the ROFR Election Notice will attain substantially the same assessed value, density, and overall economic impact and equivalent value to the City in achieving the City’s economic development objectives as the development purpose set forth in the Third-Party Offer, as reasonably approved by the City, such provision shall be considered the same as the development purpose set forth in the Third-Party Offer. If CAO elects not to exercise the ROFR, or CAO fails to provide the ROFR Election Notice to the City within the Election Period, time being of the essence, CAO shall

be deemed to have waived the ROFR with respect to such Third-Party Offer and the City may sell the Gravel Lot on terms not materially less favorable to the City than the terms set forth in said Third-Party Offer. If CAO elects not to exercise the ROFR and the Gravel Lot is sold on terms the same or not materially less favorable to the City as those set forth in and pursuant to such Third-Party Offer, CAO's ROFR shall be deemed null and void. If the City does not enter into a sale transaction on the same or not materially less favorable terms as those set forth in such Third-Party Offer within 270 days after the expiration of the Offer Period, but the City still desires to sell the Gravel Lot pursuant to such Third-Party Offer, the City shall again deliver to CAO a ROFR Notice, and CAO's right to exercise the ROFR pursuant to a ROFR Election Notice delivered within the Election Period shall be renewed with respect thereto, consistent with the terms set forth herein;

C) If CAO timely issues the ROFR Election Notice, CAO and the City shall exclusively negotiate in good faith and with due diligence to reach an agreement for the sale and purchase of the Gravel Lot ("Purchase Agreement") consistent with the terms of the ROFR Election Notice. If the City and CAO are unable in good faith to agree to the terms of such Purchase Agreement within sixty (60) days following CAO's election to purchase the Gravel Lot (the "Purchase Agreement Negotiation Period"), then the City may sell the Gravel Lot on terms not materially more favorable than the terms set forth in said Third-Party Offer to a third-party and CAO's ROFR Election Notice shall be deemed null and void; provided, however, that so long as CAO is using good faith efforts to diligently negotiate the Purchase Agreement, the Purchase Agreement Negotiation Period will be extended to allow the Parties to exchange at least four (4) drafts of the same. If the City does not enter into a sale transaction on the same or not materially less favorable terms as those set forth in such Third-Party Offer within 270 days after the expiration of the Purchase Agreement Negotiation Period, but the City still desires to sell the Gravel Lot pursuant to the terms of such Third-Party Offer, the City shall again deliver to CAO a ROFR Notice, and CAO's right to exercise the ROFR pursuant to a ROFR Election Notice delivered within the Election Period shall be renewed with respect thereto, consistent with the terms set forth herein; and

D) The ROFR is contingent upon the execution of a Restated Use and Operating Agreement between the parties, and shall be further subject to the terms and conditions contained therein.

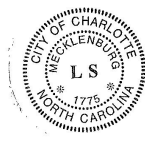
The City Manager, or his designee, is authorized to execute all documents necessary to complete the above described transaction in accordance with the terms and conditions hereof.

THIS THE 10<sup>th</sup> DAY OF APRIL 2023.

**CERTIFICATION**

I, Stephanie C. Kelly, City Clerk of the City of Charlotte, North Carolina, DO HEREBY CERTIFY that the foregoing is a true and exact copy of a Resolution adopted by the City Council of the City of Charlotte, North Carolina, in regular session convened on the 10<sup>th</sup> day of April 2023, the reference having been made in Minute Book 157 and recorded in full in Resolution Book 53, Page(s) 717-719.

WITNESS my hand and the corporate seal of the City of Charlotte, North Carolina, this 10<sup>th</sup> day of April 2023.



A handwritten signature in cursive script that reads 'Stephanie C. Kelly'. The signature is written in black ink and is positioned above a horizontal line.

Stephanie C. Kelly, City Clerk, MMC, NCCMC

RESOLUTION PASSED BY THE CITY COUNCIL OF THE CITY OF CHARLOTTE, NORTH CAROLINA ON  
APRIL 10, 2023

A motion was made by Councilmember Mitchell and seconded by Councilmember Anderson for the adoption of the following Resolution and upon being put to a vote was duly adopted:

WHEREAS, the Charlotte Regional Transportation Planning Organization (CRTPO) allocated discretionary funds (STBG-DA) for transportation improvements on the I-277 Rail Trail Bridge (Morehead St. to LYNX Brooklyn Village Avenue light rail station) (the “Project”), and

WHEREAS, A Municipal Agreement between the City and the State will provide up to \$1,903,000 in state funding to the Project, and

WHEREAS, the Municipal Agreement specifies construction costs are eligible for funds, and

WHEREAS, the formant and cost sharing philosophy is consistent with past Municipal Agreements.

NOW, THEREFORE, BE IT RESOLVED that a Municipal Agreement with the North Carolina Department of Transportation for the City to receive \$1,903,000 for transportation improvements to the Project is hereby formally adopted by City Council of the City of Charlotte, and the City Manager and Clerk of this Municipality are hereby empowered to sign and execute the Agreement with the aforementioned groups.

**CERTIFICATION**

I, Stephanie C. Kelly, City Clerk of the City of Charlotte, North Carolina, DO HEREBY CERTIFY that the foregoing is a true and exact copy of a Resolution adopted by the City Council of the City of Charlotte, North Carolina, in regular session convened on the 10<sup>th</sup> day of April 2023, the reference having been made in Minute Book 157 and recorded in full in Resolution Book 53, Page(s) 720-720 \_\_\_\_.

WITNESS my hand and the corporate seal of the City of Charlotte, North Carolina, this 10<sup>th</sup> day of April 2023.



A handwritten signature in cursive script that reads "Stephanie C. Kelly".

---

Stephanie C. Kelly, City Clerk, MMC, NCCMC

**RESOLUTION PASSED BY THE CITY COUNCIL OF THE  
CITY OF CHARLOTTE, NORTH CAROLINA ON APRIL 10, 2023**

A motion was made by Councilmember Mayfield and seconded by Councilmember Anderson for the adoption of the following Resolution, and upon being put to a vote was duly adopted:

WHEREAS, the North Carolina Department of Transportation (NCDOT) has a proposed project programmed for the intersection of Lancaster Highway and Providence Road West (the “Project”),

WHEREAS, the City of Charlotte has agreed to participate in the cost of the project for a fixed amount of \$2,500,000,

WHEREAS, a Municipal Agreement between the City and the NCDOT will provide \$2,500,000 in city funding to the Project,

WHEREAS, the format and cost sharing philosophy is consistent with past municipal agreements.

NOW, THEREFORE, BE IT RESOLVED that a Municipal Agreement with the North Carolina Department of Transportation for the City to contribute \$2,500,000 to the NCDOT for transportation improvements at the Lancaster Highway and Providence Road West intersection is hereby formally adopted by City Council of the City of Charlotte, and the City Manager and Clerk of this Municipality are hereby empowered to sign and execute the Agreement.

**CERTIFICATION**

I, Stephanie C. Kelly, City Clerk of the City of Charlotte, North Carolina, DO HEREBY CERTIFY that the foregoing is a true and exact copy of a Resolution adopted by the City Council of the City of Charlotte, North Carolina, in regular session convened on the 10<sup>th</sup> day of April 2023, the reference having been made in Minute Book 157 and recorded in full in Resolution Book 53, Page(s) 721-721\_\_\_\_\_.

WITNESS my hand and the corporate seal of the City of Charlotte, North Carolina, this 10<sup>th</sup> day of April 2023.



*Stephanie C. Kelly*

Stephanie C. Kelly, City Clerk, MMC, NCCMC

**RESOLUTION PASSED BY THE CITY COUNCIL OF THE CITY OF CHARLOTTE,  
NORTH CAROLINA ON APRIL 10, 2023**

A motion was made by Councilmember Driggs and seconded by Councilmember Molina for the adoption of the following Resolution, and upon being put to a vote was duly adopted:

- WHEREAS, the City of Charlotte will reimburse the North Carolina Department of Transportation (NCDOT) for the relocation, adjustment, and improvement of Charlotte Water owned water and sanitary sewer infrastructure located within the NCDOT highway improvements project (Project C-5621), located along US 21 and Catawba Avenue in the Town of Cornelius; and
- WHEREAS, Charlotte Water will reimburse the NCDOT for actual costs of the project estimated to be \$1,521,489; and
- WHEREAS, Charlotte Water has programmed funding for said water and sanitary sewer construction; and,
- WHEREAS, under the proposed Agreement and subject to the Agreement provisions, the City of Charlotte shall reimburse the NCDOT for actual construction costs at the conclusion of the project.

**NOW, THEREFORE, BE IT RESOLVED BY THE CITY COUNCIL OF THE CITY OF CHARLOTTE:**

That the Municipal Agreement between the North Carolina Department of Transportation and the City of Charlotte and Charlotte Water, is hereby formally approved by the City Council of the City of Charlotte and that the Director of Charlotte Water and Clerk of the City of Charlotte are hereby empowered to sign and execute the Municipal Agreement with the North Carolina Department of Transportation.

Adopted this the 10<sup>th</sup> day of April, 2023 in Charlotte, North Carolina.

**CERTIFICATION**

I, Stephanie C. Kelly, City Clerk of the City of Charlotte, North Carolina, DO HEREBY CERTIFY that the foregoing is a true and exact copy of a Resolution adopted by the City Council of the City of Charlotte, North Carolina, in regular session convened on the 10<sup>th</sup> day of April 2023, the reference having been made in Minute Book 157 and recorded in full in Resolution Book 53, Page(s) 722-722\_\_\_\_\_.

WITNESS my hand and the corporate seal of the City of Charlotte, North Carolina, this 10<sup>th</sup> day of April 2023.



*Stephanie C. Kelly*

Stephanie C. Kelly, City Clerk, MMC, NCCMC

**CHARLOTTE CITY COUNCIL**

**Resolution Authorizing Sale of Personal Property by Public Auction**

Whereas, North Carolina General Statute 160A-270(b) allows the City Council to sell personal property at public auction upon adoption of a resolution authorizing the appropriate official to dispose of the property at public auction and;

Whereas, the City Manager has recommended that the property listed on the attached (Exhibit A) be declared as surplus and sold at public auction; now therefore,

Be it resolved, by the Charlotte City Council that the City Manager or his designee is authorized to sell by public auction on April 22, 2023 at 9am the surplus property described on (Exhibit A), located at the City's Asset Recovery and Disposal facility, 5550 Wilkinson Blvd, Charlotte, North Carolina, as per the terms and conditions specified in the Auctioneer Services contract approved by City Council and in accordance with General Statute 160A-270(b). The terms of the sale shall be net cash. The City Manager or his designee is directed to publish at least once and not less than ten days before the date of the auction, a copy of this resolution or a notice summarizing its content as required by North Carolina General Statute 160A-270(b).

Adopted on this 10th day of April, 2023

**CERTIFICATION**

I, Stephanie C. Kelly, City Clerk of the City of Charlotte, North Carolina, DO HEREBY CERTIFY that the foregoing is a true and exact copy of a Resolution adopted by the City Council of the City of Charlotte, North Carolina, in regular session convened on the 10<sup>th</sup> day of April 2023, the reference having been made in Minute Book 157 and recorded in full in Resolution Book 53, Page(s) 723-734.

WITNESS my hand and the corporate seal of the City of Charlotte, North Carolina, this 10<sup>th</sup> day of April 2023.



Stephanie C. Kelly, City Clerk, MMC, NCCMC

EQUIP #	YEAR	MAKE	MODEL	DESCRIPTION	METER READING	METER TYPE	Notes
BMB202	2014	FORD	E-250 VAN	CARGO VAN	123276	MILEAGE	**
BMB203	2014	FORD	E-250 VAN	CARGO VAN	122430	MILEAGE	**
BMB204	2014	FORD	E-250 VAN	CARGO VAN	119657	MILEAGE	**
BMJ205	1988	FORD	F-350	UTILITY TRUCK	34039	MILEAGE	**
BMU117	2007	CHEVROLET	C-1500	PICKUP TRUCK	93893	MILEAGE	**
CTA016R	2002	FORD	TAURUS SW	MID SIZE STATION WAGON	42752	MILEAGE	**
CTA018	2002	FORD	TAURUS SW	MID SIZE STATION WAGON	102379	MILEAGE	**
CTA120	2005	DODGE	DURANGO	MID SIZE SUV	114720	MILEAGE	**
CTA136	2012	CHEVROLET	F-150	MID SIZE SEDAN	137299	MILEAGE	**
CTU100	2013	FORD	F-150	PICKUP TRUCK	161649	MILEAGE	**
EDA001	2012	NISSAN	LEAF	SMALL SEDAN ELECTRIC PLUG-IN	26156	MILEAGE	**
F74224	2003	SPARTAN	105	FIRE LADDER TRUCK	205848	MILEAGE	**
F74224L84	2003	SMEAL	105	FIRE LADDER BODY	469	HOURL	**
F75941	2006	SPARTAN	RESERVE ENGINE 87	FIRE PUMPER TRUCK	173897	MILEAGE	**
F75944	2006	SPARTAN	RESERVE ENGINE 88	FIRE PUMPER TRUCK	175078	MILEAGE	**
F76768	2007	SPARTAN	RESERVE ENGINE 89	FIRE PUMPER TRUCK	186234	MILEAGE	**
F76640	2009	SPARTAN	RESERVE ENGINE 80	FIRE PUMPER TRUCK	218563	MILEAGE	**
F83790	2018	SPARTAN	LADDER 2	FIRE LADDER TRUCK	62170	MILEAGE	**
F86658	2019	SPARTAN	LADDER 27	FIRE LADDER TRUCK	42532	MILEAGE	**
FDA102	2016	CHEVROLET	TAHOE	FULL SIZE SUV	122302	MILEAGE	**
FDA108	2017	CHEVROLET	IMPALA	MID SIZE SEDAN	92115	MILEAGE	**
FDA115	2016	CHEVROLET	TAHOE	FULL SIZE SUV	105580	MILEAGE	**
FDA224	2013	CHEVROLET	IMPALA	MID SIZE SEDAN	82211	MILEAGE	**
FDA231	2015	CHEVROLET	IMPALA	MID SIZE SEDAN	97375	MILEAGE	**
FDA237	2015	CHEVROLET	IMPALA	MID SIZE SEDAN	82151	MILEAGE	**
FDB078	2004	CHEVROLET	P-42	STEP VAN	31052	MILEAGE	**
FDH625R	1994	CATERPILLAR	446B	WHEELED LOADER/BACKHOE	5119	HOURL	**
FDU102	2005	CHEVROLET	K-3500 C/C	PICKUP TRUCK	73647	MILEAGE	**
FDU111	2009	CHEVROLET	C-3500 C/C	PICKUP TRUCK	190088	MILEAGE	**
FDU112	2010	CHEVROLET	C-3500 C/C	PICKUP TRUCK	157021	MILEAGE	**
FMU296	1999	FREIGHTLINER	FL60	UTILITY TRUCK	62480	MILEAGE	**
FMU105	2011	FORD	F-150	PICKUP TRUCK	66225	MILEAGE	**
LMA155	2014	CHEVROLET	EQUINOX	COMPACT SUV	92875	MILEAGE	**
LMA156	2015	CHEVROLET	EQUINOX	MID SIZE SUV	102486	MILEAGE	**
LMD700	2010	FORD	F-750	CRANE TRUCK	79714	MILEAGE	**
LMU200	2010	FORD	F-250	PICKUP TRUCK	75916	MILEAGE	**
LMU455	2001	FORD	F-150	PICKUP TRUCK	78865	MILEAGE	**
LMU467	2004	FORD	F-150 EXT	PICKUP TRUCK	89022	MILEAGE	**
LMZ073	2012	VERMEER	BC1000XL	WOOD CHIPPER	2298	HOURL	**
NDA090	2013	CHEVROLET	IMPALA	MID SIZE SEDAN	103950	MILEAGE	**
NDU110	2013	FORD	F-150	PICKUP TRUCK	125494	MILEAGE	**
NDU112	2014	FORD	F-150	PICKUP TRUCK	92306	MILEAGE	**
NDU113	2014	FORD	F-150	PICKUP TRUCK	120140	MILEAGE	**
NDU126	2016	FORD	F-150	PICKUP TRUCK	108467	MILEAGE	**
NFY002	1996	HUDSON	HSE16	FLAT BED TRAILER	N/A	MILEAGE	**
NFY003	1996	HUDSON	HSE16	FLAT BED TRAILER	N/A	MILEAGE	**



NEY004	1996	HUDSON	HSE16	FLAT BED TRAILER	N/A	MILEAGE	**
PDA002	2014	FORD	TAURUS INTR	MID SIZE SEDAN	106810	MILEAGE	**
PDA006	2017	CHEVROLET	CAPRICE	FULL SIZE SEDAN	98687	MILEAGE	**
PDA012	2018	FORD	EXPLORER INTR	MID SIZE SUV	114131	MILEAGE	** wrecked
PDA014	2014	FORD	TAURUS INTR	MID SIZE SEDAN	104619	MILEAGE	**
PDA016	2015	FORD	EXPLORER INTR	MID SIZE SUV	147601	MILEAGE	** wrecked
PDA018	2017	FORD	EXPLORER INTR	MID SIZE SUV	151009	MILEAGE	**
PDA021	2008	CHEVROLET	SUBURBAN	FULL SIZE SUV	97229	MILEAGE	**
PDA022	2018	FORD	EXPLORER INTR	MID SIZE SUV	111520	MILEAGE	**
PDA030	2016	CHEVROLET	CAPRICE	FULL SIZE SEDAN	102306	MILEAGE	**
PDA032	2017	FORD	EXPLORER INTR	MID SIZE SUV	113174	MILEAGE	**
PDA034	2014	CHEVROLET	CAPRICE	FULL SIZE SEDAN	84233	MILEAGE	** wrecked
PDA038	2019	FORD	EXPLORER INTR	FULL SIZE SUV	18804	MILEAGE	** wrecked
PDA043	2017	FORD	EXPLORER INTR	MID SIZE SUV	95795	MILEAGE	**
PDA044	2018	FORD	EXPLORER INTR	MID SIZE SUV	88575	MILEAGE	**
PDA049	2014	CHEVROLET	CAPRICE	FULL SIZE SEDAN	126109	MILEAGE	**
PDA059	2013	CHEVROLET	CAPRICE	FULL SIZE SEDAN	108304	MILEAGE	** wrecked
PDA063	2017	FORD	EXPLORER INTR	MID SIZE SUV	90604	MILEAGE	**
PDA069	2017	FORD	EXPLORER INTR	MID SIZE SUV	121947	MILEAGE	**
PDA072	2017	FORD	EXPLORER INTR	MID SIZE SUV	103302	MILEAGE	**
PDA082	2017	FORD	EXPLORER INTR	MID SIZE SUV	100824	MILEAGE	**
PDA085	2017	FORD	EXPLORER INTR	MID SIZE SUV	73654	MILEAGE	**
PDA094	2013	CHEVROLET	CAPRICE	FULL SIZE SEDAN	143189	MILEAGE	**
PDA097	2014	CHEVROLET	CAPRICE	FULL SIZE SEDAN	75366	MILEAGE	**
PDA098	2014	CHEVROLET	CAPRICE	FULL SIZE SEDAN	122750	MILEAGE	**
PDA1017	2019	FORD	EXPLORER INTR	FULL SIZE SUV	35299	MILEAGE	** wrecked
PDA1031	2019	FORD	EXPLORER INTR	FULL SIZE SUV	44153	MILEAGE	** wrecked
PDA1056	2020	FORD	EXPLORER INTR	MID SIZE SUV	15737	MILEAGE	** wrecked
PDA106	2017	FORD	EXPLORER INTR	MID SIZE SUV	102343	MILEAGE	**
PDA1074	2020	FORD	EXPLORER INTR	MID SIZE SUV	26370	MILEAGE	** wrecked
PDA1101	2020	FORD	EXPLORER INTR	MID SIZE SUV	22541	MILEAGE	** wrecked
PDA1114	2020	FORD	EXPLORER INTR	MID SIZE SUV	30720	MILEAGE	** wrecked
PDA1121	2020	FORD	EXPLORER INTR	MID SIZE SUV	16053	MILEAGE	** wrecked
PDA115	2014	CHEVROLET	CAPRICE	FULL SIZE SEDAN	94408	MILEAGE	**
PDA1156	2020	FORD	EXPLORER INTR	MID SIZE SUV	66320	MILEAGE	** wrecked
PDA117	2017	FORD	EXPLORER INTR	MID SIZE SUV	114808	MILEAGE	**
PDA1170	2021	FORD	EXPLORER INTR	MID SIZE SUV	8985	MILEAGE	** wrecked
PDA1178	2021	FORD	EXPLORER INTR	MID SIZE SUV	32531	MILEAGE	** wrecked
PDA1194	2021	FORD	EXPLORER INTR	MID SIZE SUV	31859	MILEAGE	** wrecked
PDA1197	2021	FORD	EXPLORER INTR	MID SIZE SUV	12782	MILEAGE	** wrecked
PDA126	2017	FORD	EXPLORER INTR	MID SIZE SUV	108120	MILEAGE	**
PDA128	2014	CHEVROLET	CAPRICE	FULL SIZE SEDAN	102578	MILEAGE	**
PDA130	2015	FORD	EXPLORER INTR	MID SIZE SUV	97422	MILEAGE	**
PDA138	2015	FORD	EXPLORER INTR	MID SIZE SUV	126104	MILEAGE	**
PDA139	2017	FORD	EXPLORER INTR	MID SIZE SUV	101047	MILEAGE	**
PDA140	2017	FORD	EXPLORER INTR	MID SIZE SUV	117453	MILEAGE	** wrecked
PDA141	2009	CHEVROLET	IMPALA	MID SIZE SEDAN	120609	MILEAGE	**

PDA143	2013	CHEVROLET	CAPRICE	FULL SIZE SEDAN	104952	MILEAGE	**
PDA148	2017	FORD	EXPLORER INTR	MID SIZE SUV	104732	MILEAGE	**
PDA149	2017	FORD	EXPLORER INTR	MID SIZE SUV	99665	MILEAGE	**
PDA152	2014	CHEVROLET	CAPRICE	FULL SIZE SEDAN	113585	MILEAGE	**
PDA157	2014	CHEVROLET	CAPRICE	FULL SIZE SEDAN	118749	MILEAGE	**
PDA160	2014	CHEVROLET	CAPRICE	FULL SIZE SEDAN	116099	MILEAGE	**
PDA161	2014	CHEVROLET	CAPRICE	FULL SIZE SEDAN	68664	MILEAGE	**
PDA167	2018	FORD	EXPLORER INTR	MID SIZE SUV	116725	MILEAGE	**
PDA174	2015	FORD	EXPLORER INTR	MID SIZE SUV	94568	MILEAGE	**
PDA179	2017	FORD	EXPLORER INTR	MID SIZE SUV	150334	MILEAGE	**
PDA185	2014	CHEVROLET	CAPRICE	FULL SIZE SEDAN	126040	MILEAGE	**
PDA188	2012	CHEVROLET	TAHOE	FULL SIZE SUV	173849	MILEAGE	**
PDA192	2017	FORD	EXPLORER INTR	MID SIZE SUV	80619	MILEAGE	**
PDA200	2017	FORD	EXPLORER INTR	MID SIZE SUV	100527	MILEAGE	**
PDA207	2018	FORD	EXPLORER INTR	MID SIZE SUV	103949	MILEAGE	** wrecked
PDA214	2015	FORD	EXPLORER INTR	MID SIZE SUV	133392	MILEAGE	**
PDA226	2014	FORD	EXPLORER INTR	MID SIZE SUV	155175	MILEAGE	**
PDA237	2017	FORD	EXPLORER INTR	MID SIZE SUV	99975	MILEAGE	**
PDA242	2018	FORD	EXPLORER INTR	MID SIZE SUV	124291	MILEAGE	**
PDA250	2014	CHEVROLET	CAPRICE	FULL SIZE SEDAN	112618	MILEAGE	** wrecked
PDA254	2010	FORD	CROWN VICTORIA	FULL SIZE SEDAN	117846	MILEAGE	**
PDA268	2012	CHEVROLET	CAPRICE	FULL SIZE SEDAN	117592	MILEAGE	**
PDA271	2017	FORD	EXPLORER INTR	MID SIZE SUV	112924	MILEAGE	**
PDA280	2018	FORD	EXPLORER INTR	MID SIZE SUV	102780	MILEAGE	**
PDA281	2017	FORD	EXPLORER INTR	MID SIZE SUV	111739	MILEAGE	**
PDA287	2017	FORD	EXPLORER INTR	MID SIZE SUV	100533	MILEAGE	**
PDA293	2013	CHEVROLET	CAPRICE	FULL SIZE SEDAN	101306	MILEAGE	**
PDA300	2014	CHEVROLET	CAPRICE	FULL SIZE SEDAN	135571	MILEAGE	**
PDA303	2017	FORD	EXPLORER INTR	MID SIZE SUV	99043	MILEAGE	**
PDA315	2017	FORD	EXPLORER INTR	MID SIZE SUV	128212	MILEAGE	**
PDA318	2018	FORD	EXPLORER INTR	MID SIZE SUV	95997	MILEAGE	** wrecked
PDA319	2012	CHEVROLET	TAHOE	FULL SIZE SUV	106986	MILEAGE	**
PDA333	2014	CHEVROLET	CAPRICE	FULL SIZE SEDAN	108934	MILEAGE	**
PDA345	2017	FORD	EXPLORER INTR	MID SIZE SUV	109876	MILEAGE	**
PDA347	2013	CHEVROLET	CAPRICE	FULL SIZE SEDAN	108128	MILEAGE	**
PDA354	2014	CHEVROLET	CAPRICE	FULL SIZE SEDAN	129713	MILEAGE	**
PDA370	2017	FORD	EXPLORER INTR	MID SIZE SUV	108233	MILEAGE	**
PDA387	2017	FORD	EXPLORER INTR	MID SIZE SUV	115466	MILEAGE	**
PDA390	2012	DODGE	CHARGER	FULL SIZE SEDAN	108240	MILEAGE	**
PDA401	2014	FORD	EXPLORER INTR	MID SIZE SUV	142651	MILEAGE	**
PDA405	2014	FORD	TAURUS INTR	MID SIZE SEDAN	410407	MILEAGE	**
PDA421	2017	FORD	EXPLORER INTR	MID SIZE SUV	86389	MILEAGE	** wrecked
PDA423	2013	CHEVROLET	CAPRICE	FULL SIZE SEDAN	117380	MILEAGE	**
PDA429	2014	FORD	EXPLORER INTR	MID SIZE SUV	110622	MILEAGE	**
PDA436	2013	CHEVROLET	CAPRICE	FULL SIZE SEDAN	123345	MILEAGE	**
PDA439	2017	FORD	EXPLORER INTR	MID SIZE SUV	89871	MILEAGE	**
PDA441	2017	FORD	EXPLORER INTR	MID SIZE SUV	131754	MILEAGE	**

PDA443	2019	FORD	EXPLORER INTR	MID SIZE SUV	90628	MILEAGE	** wrecked
PDA454	2015	FORD	EXPLORER INTR	MID SIZE SUV	127186	MILEAGE	
PDA462	2017	FORD	EXPLORER INTR	MID SIZE SUV	91447	MILEAGE	
PDA469	2019	FORD	EXPLORER INTR	MID SIZE SUV	91097	MILEAGE	**
PDA471	2014	FORD	EXPLORER INTR	MID SIZE SUV	95907	MILEAGE	**
PDA472	2017	FORD	EXPLORER INTR	MID SIZE SUV	97340	MILEAGE	**
PDA475	2014	FORD	EXPLORER INTR	MID SIZE SUV	138438	MILEAGE	
PDA476	2014	CHEVROLET	CAPRICE	FULL SIZE SEDAN	107171	MILEAGE	**
PDA479	2017	CHEVROLET	CAPRICE	FULL SIZE SEDAN	102445	MILEAGE	
PDA480	2015	FORD	EXPLORER INTR	MID SIZE SUV	70721	MILEAGE	** wrecked
PDA481	2014	FORD	EXPLORER INTR	MID SIZE SUV	103787	MILEAGE	**
PDA485	2014	CHEVROLET	CAPRICE	FULL SIZE SEDAN	99326	MILEAGE	**
PDA487	2014	CHEVROLET	CAPRICE	FULL SIZE SEDAN	99164	MILEAGE	**
PDA488	2011	FORD	CROWN VICTORIA	FULL SIZE SEDAN	131958	MILEAGE	
PDA493	2017	CHEVROLET	CAPRICE	FULL SIZE SEDAN	95242	MILEAGE	
PDA495	2016	CHEVROLET	CAPRICE	FULL SIZE SEDAN	65709	MILEAGE	
PDA509	2014	CHEVROLET	CAPRICE	FULL SIZE SEDAN	101194	MILEAGE	**
PDA515	2015	FORD	EXPLORER INTR	MID SIZE SUV	128873	MILEAGE	
PDA526	2017	FORD	EXPLORER INTR	MID SIZE SUV	134763	MILEAGE	
PDA5334	2009	CHEVROLET	MALIBU	MID SIZE SEDAN	126697	MILEAGE	** wrecked
PDA537	2019	FORD	EXPLORER INTR	MID SIZE SUV	100345	MILEAGE	**
PDA5395	2012	CHEVROLET	IMPALA	FULL SIZE SEDAN	145338	MILEAGE	**
PDA5397	2012	CHEVROLET	IMPALA	FULL SIZE SEDAN	151063	MILEAGE	**
PDA5399	2012	CHEVROLET	IMPALA	FULL SIZE SEDAN	144408	MILEAGE	**
PDA5415	2012	CHEVROLET	IMPALA	MID SIZE SEDAN	98755	MILEAGE	**
PDA5426	2012	CHEVROLET	IMPALA	MID SIZE SEDAN	131744	MILEAGE	
PDA543	2016	CHEVROLET	CAPRICE	FULL SIZE SEDAN	107657	MILEAGE	
PDA5444	2013	CHEVROLET	IMPALA	MID SIZE SEDAN	137509	MILEAGE	**
PDA5446	2013	CHEVROLET	IMPALA	MID SIZE SEDAN	126967	MILEAGE	**
PDA5449	2013	CHEVROLET	IMPALA	MID SIZE SEDAN	135419	MILEAGE	**
PDA5452	2013	CHEVROLET	IMPALA	MID SIZE SEDAN	124326	MILEAGE	**
PDA5453	2013	CHEVROLET	IMPALA	MID SIZE SEDAN	158918	MILEAGE	**
PDA546	2016	CHEVROLET	CAPRICE	FULL SIZE SEDAN	100889	MILEAGE	
PDA5463	2013	CHEVROLET	IMPALA	MID SIZE SEDAN	157166	MILEAGE	**
PDA547	2017	FORD	EXPLORER INTR	MID SIZE SUV	102707	MILEAGE	
PDA5476	2013	FORD	EXPLORER INTR	MID SIZE SUV	110291	MILEAGE	**
PDA5477	2014	FORD	EXPLORER INTR	MID SIZE SUV	178761	MILEAGE	
PDA5480	2013	CHEVROLET	IMPALA	MID SIZE SEDAN	165836	MILEAGE	
PDA5488	2014	FORD	EXPLORER INTR	MID SIZE SUV	135608	MILEAGE	
PDA5491	2014	FORD	EXPLORER INTR	MID SIZE SUV	114992	MILEAGE	
PDA5493	2014	CHEVROLET	IMPALA	MID SIZE SEDAN	126338	MILEAGE	**
PDA5499	2014	CHEVROLET	IMPALA	MID SIZE SEDAN	119430	MILEAGE	**
PDA5505	2014	CHEVROLET	IMPALA	MID SIZE SEDAN	145701	MILEAGE	**
PDA551	2014	CHEVROLET	CAPRICE	FULL SIZE SEDAN	103487	MILEAGE	
PDA5515	2013	CHEVROLET	IMPALA	MID SIZE SEDAN	132079	MILEAGE	
PDA5518	2014	CHEVROLET	IMPALA	MID SIZE SEDAN	119790	MILEAGE	**
PDA5519	2014	CHEVROLET	IMPALA	MID SIZE SEDAN	122877	MILEAGE	**

PDA552	2013	CHEVROLET	CAPRICE	FULL SIZE SEDAN	136516	MILEAGE	**
PDA5531	2014	FORD	EXPLORER INTR	MID SIZE SUV	126907	MILEAGE	**
PDA5536	2014	FORD	EXPLORER INTR	MID SIZE SUV	128051	MILEAGE	**
PDA5542	2015	FORD	EXPLORER INTR	MID SIZE SUV	128179	MILEAGE	**
PDA5545	2014	CHEVROLET	CAPRICE	FULL SIZE SEDAN	121300	MILEAGE	**
PDA5551	2015	FORD	EXPLORER INTR	MID SIZE SUV	123279	MILEAGE	**
PDA5557	2015	CHEVROLET	IMPALA	MID SIZE SEDAN	116664	MILEAGE	**
PDA5562	2015	CHEVROLET	IMPALA	MID SIZE SEDAN	112980	MILEAGE	**
PDA5566	2015	CHEVROLET	IMPALA	MID SIZE SEDAN	108053	MILEAGE	**
PDA5582	2015	CHEVROLET	IMPALA	MID SIZE SEDAN	140336	MILEAGE	**
PDA5585	2015	CHEVROLET	IMPALA	MID SIZE SEDAN	116870	MILEAGE	**
PDA5586	2016	CHEVROLET	IMPALA	FULL SIZE SEDAN	127674	MILEAGE	**
PDA5595	2016	CHEVROLET	IMPALA	MID SIZE SEDAN	163489	MILEAGE	**
PDA5597	2016	CHEVROLET	IMPALA	MID SIZE SEDAN	102518	MILEAGE	**
PDA5618	2014	CHEVROLET	CAPRICE	FULL SIZE SEDAN	129524	MILEAGE	**
PDA5626	2016	CHEVROLET	IMPALA	MID SIZE SEDAN	111800	MILEAGE	**
PDA563	2014	CHEVROLET	CAPRICE	FULL SIZE SEDAN	125654	MILEAGE	**
PDA566	2016	FORD	EXPLORER INTR	MID SIZE SUV	89150	MILEAGE	**
PDA568	2013	CHEVROLET	CAPRICE	FULL SIZE SEDAN	122046	MILEAGE	**
PDA5703	2017	CHEVROLET	EQUINOX	COMPACT SUV	116644	MILEAGE	**
PDA5753	2018	FORD	EXPLORER INTR	MID SIZE SUV	89974	MILEAGE	**
PDA5756	2018	FORD	EXPLORER INTR	MID SIZE SUV	84978	MILEAGE	**
PDA5770	2018	CHEVROLET	EQUINOX	MID SIZE SUV	80953	MILEAGE	**
PDA5834	2018	FORD	EXPLORER INTR	MID SIZE SUV	15810	MILEAGE	**
PDA5850	2019	CHEVROLET	EQUINOX	MID SIZE SUV	36577	MILEAGE	**
PDA591	2017	FORD	EXPLORER INTR	MID SIZE SUV	139936	MILEAGE	**
PDA609	2017	FORD	EXPLORER INTR	MID SIZE SUV	109462	MILEAGE	**
PDA614	2015	FORD	EXPLORER INTR	MID SIZE SUV	134931	MILEAGE	**
PDA615	2017	FORD	EXPLORER INTR	MID SIZE SUV	111021	MILEAGE	**
PDA617	2017	FORD	EXPLORER INTR	MID SIZE SUV	104061	MILEAGE	**
PDA622	2017	CHEVROLET	CAPRICE	FULL SIZE SEDAN	96902	MILEAGE	**
PDA6238	2019	FORD	FUSION	MID SIZE SEDAN	27736	MILEAGE	**
PDA629	2016	FORD	EXPLORER INTR	MID SIZE SUV	104744	MILEAGE	**
PDA636	2015	FORD	EXPLORER INTR	MID SIZE SUV	115318	MILEAGE	**
PDA649	2016	FORD	EXPLORER INTR	MID SIZE SUV	118124	MILEAGE	**
PDA659	2017	CHEVROLET	CAPRICE	FULL SIZE SEDAN	83901	MILEAGE	**
PDA663	2016	FORD	EXPLORER INTR	MID SIZE SUV	116647	MILEAGE	**
PDA669	2016	CHEVROLET	CAPRICE	FULL SIZE SEDAN	117787	MILEAGE	**
PDA676	2015	FORD	EXPLORER INTR	MID SIZE SUV	120369	MILEAGE	**
PDA677	2016	CHEVROLET	CAPRICE	FULL SIZE SEDAN	75773	MILEAGE	**
PDA683	2017	FORD	EXPLORER INTR	MID SIZE SUV	130775	MILEAGE	**
PDA683	2012	CHEVROLET	CAPRICE	FULL SIZE SEDAN	103510	MILEAGE	**
PDA684	2016	FORD	EXPLORER INTR	MID SIZE SUV	88899	MILEAGE	**
PDA695	2017	CHEVROLET	CAPRICE	FULL SIZE SEDAN	117999	MILEAGE	**
PDA696	2011	DODGE	CHARGER	FULL SIZE SEDAN	123996	MILEAGE	**
PDA697	2017	FORD	EXPLORER INTR	MID SIZE SUV	113313	MILEAGE	**
PDA714	2014	FORD	EXPLORER INTR	MID SIZE SUV	110329	MILEAGE	**

PDA715	2014	FORD	EXPLORER INTR	MID SIZE SUV	101974	MILEAGE	** wrecked
PDA717	2019	FORD	EXPLORER INTR	MID SIZE SUV	64132	MILEAGE	**
PDA721	2016	FORD	EXPLORER INTR	MID SIZE SUV	116461	MILEAGE	**
PDA726	2016	FORD	EXPLORER INTR	MID SIZE SUV	119401	MILEAGE	**
PDA732	2017	FORD	EXPLORER INTR	MID SIZE SUV	112876	MILEAGE	**
PDA734	2017	FORD	EXPLORER INTR	MID SIZE SUV	97535	MILEAGE	**
PDA761	2017	FORD	EXPLORER INTR	MID SIZE SUV	137572	MILEAGE	** wrecked
PDA771	2014	FORD	EXPLORER INTR	MID SIZE SUV	68250	MILEAGE	** wrecked
PDA773	2011	FORD	CROWN VICTORIA	FULL SIZE SEDAN	135181	MILEAGE	**
PDA779	2012	CHEVROLET	CAPRICE	FULL SIZE SEDAN	104661	MILEAGE	
PDA783	2017	FORD	EXPLORER INTR	MID SIZE SUV	159926	MILEAGE	
PDA792	2014	FORD	EXPLORER INTR	MID SIZE SUV	172148	MILEAGE	
PDA796	2016	FORD	EXPLORER INTR	MID SIZE SUV	112682	MILEAGE	**
PDA803	2017	FORD	EXPLORER INTR	MID SIZE SUV	111254	MILEAGE	
PDA818	2017	FORD	EXPLORER INTR	MID SIZE SUV	140212	MILEAGE	
PDA825	2017	FORD	EXPLORER INTR	MID SIZE SUV	126751	MILEAGE	
PDA831	2016	FORD	EXPLORER INTR	MID SIZE SUV	108163	MILEAGE	**
PDA835	2016	FORD	EXPLORER INTR	MID SIZE SUV	113584	MILEAGE	
PDA837	2010	FORD	CROWN VICTORIA	FULL SIZE SEDAN	141927	MILEAGE	**
PDA838	2017	FORD	EXPLORER INTR	MID SIZE SUV	103851	MILEAGE	
PDA842	2016	FORD	EXPLORER INTR	MID SIZE SUV	116052	MILEAGE	**
PDA861	2017	FORD	EXPLORER INTR	MID SIZE SUV	129298	MILEAGE	**
PDA881	2013	CHEVROLET	CAPRICE	FULL SIZE SEDAN	54229	MILEAGE	** wrecked
PDA882	2013	CHEVROLET	CAPRICE	FULL SIZE SEDAN	97632	MILEAGE	**
PDA886	2013	CHEVROLET	CAPRICE	FULL SIZE SEDAN	115573	MILEAGE	**
PDA892	2017	FORD	EXPLORER INTR	MID SIZE SUV	101876	MILEAGE	**
PDA894	2013	CHEVROLET	CAPRICE	FULL SIZE SEDAN	97281	MILEAGE	**
PDA901	2019	FORD	EXPLORER INTR	MID SIZE SUV	106860	MILEAGE	**
PDA906	2016	CHEVROLET	CAPRICE	FULL SIZE SEDAN	88337	MILEAGE	
PDA912	2016	CHEVROLET	CAPRICE	FULL SIZE SEDAN	105927	MILEAGE	
PDA918	2017	FORD	EXPLORER INTR	MID SIZE SUV	103999	MILEAGE	**
PDA924	2017	FORD	EXPLORER INTR	MID SIZE SUV	96324	MILEAGE	**
PDA925	2014	CHEVROLET	CAPRICE	FULL SIZE SEDAN	105120	MILEAGE	**
PDA927	2017	FORD	EXPLORER INTR	MID SIZE SUV	115859	MILEAGE	**
PDA935	2017	FORD	EXPLORER INTR	MID SIZE SUV	95979	MILEAGE	**
PDA936	2017	FORD	EXPLORER INTR	MID SIZE SUV	96119	MILEAGE	**
PDA945	2019	FORD	EXPLORER INTR	MID SIZE SUV	93800	MILEAGE	**
PDA947	2017	FORD	EXPLORER INTR	MID SIZE SUV	158465	MILEAGE	**
PDA951	2011	FORD	CROWN VICTORIA	FULL SIZE SEDAN	132712	MILEAGE	**
PDA963	2017	FORD	EXPLORER INTR	MID SIZE SUV	130487	MILEAGE	
PDA965	2014	CHEVROLET	CAPRICE	FULL SIZE SEDAN	106623	MILEAGE	**
PDA966	2015	FORD	EXPLORER INTR	MID SIZE SUV	101293	MILEAGE	**
PDA967	2014	CHEVROLET	CAPRICE	FULL SIZE SEDAN	94245	MILEAGE	
PDA984	2017	FORD	EXPLORER INTR	MID SIZE SUV	124499	MILEAGE	
PDA986	2016	CHEVROLET	TAHOE	FULL SIZE SUV	115852	MILEAGE	
PDA987	2016	CHEVROLET	TAHOE	FULL SIZE SUV	101309	MILEAGE	**
PDA991	2017	FORD	EXPLORER INTR	MID SIZE SUV	114229	MILEAGE	**

PDA998	2017	FORD	EXPLORER INTR	MID SIZE SUV	116970	MILEAGE	**
PDB102	2013	CHEVROLET	G-2500	CARGO VAN	110925	MILEAGE	**
PDB103	2013	CHEVROLET	G-2500	CARGO VAN	98645	MILEAGE	**
PDZ108	2012	KAWASAKI	MULE	UTILITY CART	2349	HOURL	**
SMA107	2006	CHEVROLET	IMPALA	MID SIZE SEDAN	58833	MILEAGE	**
SMD326	2004	INTERNATIONAL	4300 SBA	DUMP TRUCK	183438	MILEAGE	**
SMD473	2001	FREIGHTLINER	FL80	DUMP TRUCK	104922	MILEAGE	**
SMD513	2005	INTERNATIONAL	4400	DUMP TRUCK	130630	MILEAGE	**
SMD526	2006	INTERNATIONAL	4400	DUMP TRUCK	110827	MILEAGE	**
SMD528	2006	INTERNATIONAL	4400	DUMP TRUCK	123990	MILEAGE	**
SMD535	2006	FORD	F-650 C/C	DUMP TRUCK	133977	MILEAGE	**
SMD536	2006	FORD	F-650 C/C	DUMP TRUCK	197364	MILEAGE	**
SMD537	2006	FORD	F-650 C/C	DUMP TRUCK	183963	MILEAGE	**
SMD538	2006	FORD	F-650 C/C	DUMP TRUCK	124824	MILEAGE	**
SMD540	2008	INTERNATIONAL	4400	DUMP TRUCK	82077	MILEAGE	**
SMD541	2008	FORD	F-650 C/C	DUMP TRUCK	95725	MILEAGE	**
SMD542	2008	FORD	F-650 C/C	DUMP TRUCK	100688	MILEAGE	**
SMD544	2008	FORD	F-650 C/C	DUMP TRUCK	97084	MILEAGE	**
SMD705	2011	FORD	F-750	DUMP TRUCK	125805	MILEAGE	**
SMD800	2010	FREIGHTLINER	M2106	DUMP TRUCK	92270	MILEAGE	**
SMD801	2010	FREIGHTLINER	M2106	DUMP TRUCK	96607	MILEAGE	**
SMD802	2010	FREIGHTLINER	M2106	DUMP TRUCK	87207	MILEAGE	**
SMD803	2010	FREIGHTLINER	M2106	DUMP TRUCK	83673	MILEAGE	**
SMD804	2011	FREIGHTLINER	M2106	DUMP TRUCK	73936	MILEAGE	**
SMJ400	2011	FORD	F-450 C/C	UTILITY TRUCK	119256	MILEAGE	**
SMJ402	2014	FORD	F-450 C/C	UTILITY TRUCK	76808	MILEAGE	**
SMR534	2007	MULTIQUIP	V304EH	WALK BEHIND ROLLER	N/A	HOURL	**
SMR814	2008	JCB	VTM280	RIDING ROLLER	400	HOURL	**
SMU118	2009	FORD	F-450 C/C	UTILITY TRUCK	146054	MILEAGE	**
SMU188	2001	FORD	F-350 C/C	UTILITY TRUCK	214362	MILEAGE	**
SMU191	2005	FORD	F-350 C/C	UTILITY TRUCK	175466	MILEAGE	**
SMU194	2005	FORD	F-450 C/C	UTILITY TRUCK	146817	MILEAGE	**
SMU197	2005	FORD	F-350 C/C	UTILITY TRUCK	195009	MILEAGE	**
SMY501	2001	HUDSON	HS 14	FLAT BED TRAILER	N/A	N/A	**
SMZ921R	1996	MASTCRAFT	S-8HX-6	FORKLIFT	3,441	HOURL	**
SNP839	2012	AUTOCAR	XPEDITOR	AUTOMATED REFUSE TRUCK	182461	MILEAGE	**
SNP850	2013	CRANE CARRIER	LET2-40	REARLOADER REFUSE TRUCK	140183	MILEAGE	**
SNP860	2013	CRANE CARRIER	LET2-40	REARLOADER REFUSE TRUCK	153959	MILEAGE	**
SNP862	2013	CRANE CARRIER	LET2-40	REARLOADER REFUSE TRUCK	170316	MILEAGE	**
SNP863	2013	CRANE CARRIER	LET2-40	REARLOADER REFUSE TRUCK	169599	MILEAGE	**
SNP864	2013	CRANE CARRIER	LET2-40	REARLOADER REFUSE TRUCK	150173	MILEAGE	**
SNP869	2016	AUTOCAR	ACX64	AUTOMATED REFUSE TRUCK	137834	MILEAGE	**
SNP890	2016	AUTOCAR	ACX64	AUTOMATED REFUSE TRUCK	119239	MILEAGE	**
SNP891	2016	AUTOCAR	ACX64	AUTOMATED REFUSE TRUCK	129705	MILEAGE	**
SNP893	2016	AUTOCAR	ACX64	AUTOMATED REFUSE TRUCK	123181	MILEAGE	**
SNP895	2016	AUTOCAR	ACX64	AUTOMATED REFUSE TRUCK	132119	MILEAGE	**
SNP896	2016	AUTOCAR	ACX64	AUTOMATED REFUSE TRUCK	147314	MILEAGE	**

SNP905	2017	AUTOCAR	ACX64	AUTOMATED REFUSE TRUCK	116767	MILEAGE	**
SNU120	2020	FORD	F-150 C/C	PICKUP TRUCK	16322	MILEAGE	** Wrecked
SSP801	2012	CRANE CARRIER	LET2-40	REARLOADER REFUSE TRUCK	150243	MILEAGE	**
SSP802	2012	CRANE CARRIER	LET2-40	REARLOADER REFUSE TRUCK	147928	MILEAGE	**
SSS701	2009	ISUZU	FTR	VACUUM STREET SWEEPER TRUCK	66245	MILEAGE	**
SSS704	2009	ISUZU	FTR	VACUUM STREET SWEEPER TRUCK	69032	MILEAGE	**
SSS705	2009	ISUZU	FVR	VACUUM STREET SWEEPER TRUCK	63965	MILEAGE	**
SSU049	2010	FORD	F-250	UTILITY TRUCK	193254	MILEAGE	**
SSU053	2014	FORD	F-150 C/C	PICKUP TRUCK	124540	MILEAGE	**
TEA025	2007	FORD	ESCAPE HYBRID	COMPACT SUV HYBRID	39081	MILEAGE	**
TEB352	2012	DODGE	GRAND CARAVAN	MINIVAN	202400	MILEAGE	**
TMU005	2006	CHEVROLET	C-3500 EXT	PICKUP TRUCK	110427	MILEAGE	**
TMU100	2012	FORD	F-150	PICKUP TRUCK	107731	MILEAGE	**
TOJ300	2010	FORD	F-350 C/C	UTILITY TRUCK	122450	MILEAGE	**
TOJ502	2006	FORD	F-550	BUCKET TRUCK	112594	MILEAGE	**
TOJ505	2009	CHEVROLET	C-7500	PUBLIC WORKS TRUCK	60517	MILEAGE	**
TOU200	2011	FORD	F-250	PICKUP TRUCK	88120	MILEAGE	**
TOU203	2011	FORD	F-250	PICKUP TRUCK	81428	MILEAGE	**
TOZ936	2014	RELIABLE EQUIPMENT	REL-HPU-2000	SMALL TOOL	0	hour	**
TOZ939	2017	HUSQVARNA	FS-3500	CONCRETE SAW	287	hour	**
TPU103	2012	CHEVROLET	COLORADO	PICKUP TRUCK	81980	MILEAGE	**
TSA059	2008	FORD	ESCAPE HYBRID	COMPACT SUV HYBRID	59047	MILEAGE	**
TSJ200	2014	FORD	F-250	UTILITY TRUCK	147912	MILEAGE	**
TSJ418R	2006	CHEVROLET	K-2500 EXT	UTILITY TRUCK	157340	MILEAGE	**
WAA010	2012	NISSAN	LEAF	SMALL SEDAN ELECTRIC PLUG-IN	12704	MILEAGE	**
WAU127R	2012	FORD	F-150	PICKUP TRUCK	90714	MILEAGE	**
WCU116	2013	FORD	F-150	PICKUP TRUCK	126144	MILEAGE	**
WCU118	2013	FORD	F-150	PICKUP TRUCK	149353	MILEAGE	**
WCU120	2013	FORD	F-150	PICKUP TRUCK	111245	MILEAGE	**
WCU186	2014	FORD	F-150	PICKUP TRUCK	120559	MILEAGE	**
WDC208	2002	SULLIVAN	250 CFM	TRAILER MOUNTED COMPRESSOR	705	hour	**
WDD914	2009	FORD	F-650	DUMP TRUCK	111920	MILEAGE	**
WDH615	1999	KUBOTA	L235	WHEELED LOADER/BACKHOE	915	hour	**
WDJ408	2010	FORD	F-450 C/C	UTILITY TRUCK	197854	MILEAGE	**
WDJ844	2002	INTERNATIONAL	4700	UTILITY TRUCK	9322	MILEAGE	**
WDU100	2013	FORD	F-150 EXT	PICKUP TRUCK	121758	MILEAGE	**
WDU101	2014	FORD	F-150 EXT	PICKUP TRUCK	136916	MILEAGE	**
WDU102	2014	FORD	F-150	PICKUP TRUCK	137474	MILEAGE	**
WDU103	2014	FORD	F-150	PICKUP TRUCK	108505	MILEAGE	**
WDU133	2016	FORD	F-150 EXT	PICKUP TRUCK	104978	MILEAGE	**
WDU140	2016	FORD	F-150 EXT	PICKUP TRUCK	105615	MILEAGE	**
WDU816	2008	FORD	F-150	PICKUP TRUCK	104760	MILEAGE	**
WDY638	2006	HUDSON	HTD18D	FLAT BED TRAILER	N/A	N/A	**
WEA058	2004	CHEVROLET	SUBURBAN	FULL SIZE SUV	124855	MILEAGE	**
WEU108	2014	FORD	F-150 EXT	PICKUP TRUCK	150046	MILEAGE	**
WEU135	2013	FORD	F-150	PICKUP TRUCK	184261	MILEAGE	**
WEU164	2013	FORD	F-150 EXT	PICKUP TRUCK	122835	MILEAGE	**

WFT501N	1985	FORD	555CP2	UTILITY TRACTOR	3345	HOUR	**
WFU002	2008	FORD	F-150 EXT	PICKUP TRUCK	98275	MILEAGE	**
WSB007	2003	CHEVROLET	G-1500 (CHEV)	CARGO VAN	103363	MILEAGE	**
WSJ203	2014	FORD	F-250 EXT	UTILITY TRUCK	148806	MILEAGE	**
WSJ502	2010	FORD	F-550	UTILITY TRUCK	166719	MILEAGE	**
WSJ883	2009	INTERNATIONAL	7400	SEWER JETTER TRUCK	79919	MILEAGE	**
WSU007	2016	FORD	F-150 EXT	PICKUP TRUCK	116182	MILEAGE	**
WSU100	2014	FORD	F-150	PICKUP TRUCK	145427	MILEAGE	**
WSU102	2014	FORD	F-150	PICKUP TRUCK	114216	MILEAGE	**
WSU103	2014	FORD	F-150	PICKUP TRUCK	92831	MILEAGE	**
WSU108	2014	FORD	F-150 EXT	PICKUP TRUCK	121692	MILEAGE	**
WSZ303	2007	GRYRO-TRAC	GT13	RIDING MOWER	510	HOUR	**
WWH895	1998	JOHN DEERE	310E	WHEELED LOADER/BACKHOE	3113	HOUR	**
WWJ307	2005	FORD	F-450	UTILITY TRUCK	54671	MILEAGE	**
WWT505	1994	FORD	555E (FORD)	UTILITY TRACTOR	3159	HOUR	**
WWU056	2004	FORD	F-150	PICKUP TRUCK	71485	MILEAGE	**
WWU121	2013	FORD	F-150	PICKUP TRUCK	85340	MILEAGE	**
WWZ005	2005	JCB	940 RTFL	FORKLIFT	2169	HOUR	**

**Footnotes:**  
 Various other small tools and equipment.  
 Some on the list (\*\*\*) are "scheduled for decommission", but may not make the delivery deadline. Vehicles that do not make the delivery deadline will be included in the next rolling stock auction Exhibit - A listing for approval to dispose.  
 This list of vehicles and equipment are no longer necessary for the conduct of City business due to age, mileage, repair, or accident.  
 The vehicles/equipment on this list (excluding Airport and CATS) are provided by City Fleet Management. They manage when vehicles and equipment go to surplus for disposal.



**NORTH CAROLINA**

**MECKLENBURG COUNTY**

**DELEGATION OF AUTHORITY**

**TO TRANSFER TITLES**

Rex E. Dye and/or Marcy Mars are hereby authorized to execute on behalf of City of Charlotte such documents as may be necessary to evidence the transfer of titles for the specific vehicles declared as surplus by the City Manager upon the sale of said vehicles at the date and time set forth below:

Date: April 22, 2023 at 9am

Location: 5550 Wilkinson Blvd, Charlotte, North Carolina 28208

This is the \_\_\_\_\_ day of \_\_\_\_\_, 2023.

Signature: \_\_\_\_\_

Title: \_\_\_\_\_

**Virtual Rolling Stock Auction: 4/22/2023**

With the success of our virtual only live on-line auctions over the past year, we will continue to have a live, on-line only auctions:

- No live on-site preview or auction.
- On-line auction process will be performed at the Rogers Auction Company office.

The auction process - With a virtual auction only (no live on-site auction bidders):

- The virtual auction can be found at [www.rogersauctiongroup.com](http://www.rogersauctiongroup.com).
- Pictures and videos for each surplus asset will be on the auction website several weeks before the auction date (for review, questions, and pre-bidding).
- The auction will start a 9am on 4/22/2023.
- The bidding will be (on-line only) and each item will be auctioned in real time (live auction).
- Bidders will be bidding on-line against each other and the auctioneer will auction each item live.
- The winning bidder will pay Rogers Auction Company (electronic payment only).
- Bidders will have one week after auction to pick up their item (same as live on-site process).
- Rogers auction company will pay the City via Automated Clearing House (ACH) payment (just like they do for on-line items sold during our live on-site auctions).

**RESOLUTION FIXING DATE OF PUBLIC HEARING ON QUESTION  
OF ANNEXATION PURSUANT TO G.S. 160A-31  
MT. HOLLY RIVERSIDE AREA ANNEXATION**

WHEREAS, a petition requesting annexation of the area described herein has been received; and

WHEREAS, the City Council has by resolution directed the City Clerk to investigate the sufficiency of the petition; and

WHEREAS, certification by the City Clerk as to the sufficiency of the petition has been made;

NOW, THEREFORE, BE IT RESOLVED by the City Council of the City of Charlotte, North Carolina that:

Section 1. A public hearing on the question of annexation of the area described herein will be held during a meeting at the Charlotte-Mecklenburg Government Center at 6:30 p.m. on April 24, 2023.

Section 2. The area proposed for annexation is described as follows:

**LEGAL DESCRIPTION**

All that tract or parcel of land, lying and being in the City of Charlotte E.T.J., Paw Creek Township, Mecklenburg County, North Carolina containing 4,379,845 square feet or 100.547 acres, more or less and being more particularly described as follows (basis of bearing is the North Carolina State Plane Coordinate System NAD 83(2011):

Commencing at NGS Monument 'Clariant', said monument having North Carolina State Plane Coordinates (NAD 83(2011) combined scale factor: 0.99984613) N:569,478.12 sFT, E: 1,405,574.13 sFT; thence, along a tie line N76°13'14"W a distance of 166.68 feet to a point marked by a 5/8" rebar found on the northeast right of way line of Mount Holly Road (N.C. Highway 27, Variable Width Public Right of Way), said point having North Carolina State Plane Coordinates N: 569,517.69 sFT, E: 1,405,412.28 sFT, said point being the Point of Beginning for this tract of land; thence, along the northeast right of way line of Mount Holly Road the following nine (9) courses: 1.S86°38'36"W a distance of 48.08 feet to a point marked by a 5/8" rebar found;2.S85°40'42"W a distance of 3.20 feet to a point marked by a 5/8" rebar found;3.N85°26'55"W a distance of 1,347.01 feet to a point marked by a 1/2" rebar set;4.N85°28'09"W a distance of 135.32 feet to a point marked by a 1/2" rebar set;5.along a curve to the left an arc distance of 140.91 feet to a point marked by R/W monument found (rebar with cap), said curve having a radius of 5,599.65 feet, a chord bearing of N86°11'32"W, and a chord distance of 140.91 feet;6.S01023'12"E a distance of 3.68 feet to a point marked by a 1" open top pipe;7.along a curve to the left an arc distance of 160.63 feet to a point marked by a R/W monument found (aluminum disk), said curve having a radius of 2,000.00 feet, a chord bearing of N87°11'12"W and a chord distance of 160.59 feet;8.N02°17'36"E a distance of 5.97 feet to a point marked by a R/W monument (aluminum disk);9. along a curve to the left an arc distance of 104.07 feet to a point marked by a 5/8" rebar found, said curve having a radius of 4,880.00 feet, a chord bearing of S89°27'08"W and a chord distance of 104.06 feet; thence, leaving the northeast right of way line of Mount Holly Road along the common boundary line with Caromont Health, Inc.

(deed recorded in Deed Book 30773, Page 563, Mecklenburg County Register of Deeds) the following five (5) courses: 1. N00°39'05"W a distance of 239.92 feet to a point marked by a 1/2" rebar found; 2. S89°25'55"W a distance of 180.37 feet to a point marked by a 1/2" rebar found; 3. N00°35'50"W a distance of 163.22 feet to a point marked by a 1/2" rebar found; 4. N47°33'53"W a distance of 272.80 feet to a point marked by a 1/2" rebar found; 5. S89°53'40"W a distance of 165.51 feet to a point marked by a 1/2" rebar found on the top of the east bank of the Catawba River; thence, along the east bank of the Catawba River the following thirty-four (34) courses: 1. N28°37'09"W a distance of 45.11 feet to a point; 2. N24°58'36"E a distance of 45.53 feet to a point; 3. N17°31'51"E a distance of 85.25 feet to a point; 4. N19°54'26"E a distance of 53.80 feet to a point; 5. N17°51'21"E a distance of 63.56 feet to a point; 6. N08°29'14"E a distance of 94.14 feet to a point; 7. N16°18'21"E a distance of 19.83 feet to a point; 8. N06°32'12"E a distance of 102.96 feet to a point; 9. N07°07'06"E a distance of 50.51 feet to a point; 10. N06°42'20"E a distance of 38.25 feet to a point; 11. N04°55'48"E a distance of 63.98 feet to a point; 12. N12°03'20"E a distance of 64.35 feet to a point; 13. N07°07'16"W a distance of 38.79 feet to a point; 14. N02°42'31"W a distance of 51.02 feet to a point; 15. N04°34'11"E a distance of 62.07 feet to a point; 16. N01°02'30"E a distance of 37.88 feet to a point; 17. N04°41'22"E a distance of 46.24 feet to a point; 18. N19°25'04"E a distance of 74.83 feet to a point; 19. N21°47'30"E a distance of 59.46 feet to a point; 20. N01°04'20"W a distance of 149.94 feet to a point; 21. N20°24'52"W a distance of 16.13 feet to a point; 22. N10°28'23"W a distance of 39.29 feet to a point; 23. N19°37'11"E a distance of 73.95 feet to a point; 24. N23°00'20"E a distance of 100.77 feet to a point; 25. N28°56'34"E a distance of 58.39 feet to a point; 26. N14°36'45"E a distance of 36.26 feet to a point; 27. N21°26'51"E a distance of 82.81 feet to a point; 28. N23°16'25"E a distance of 81.13 feet to a point; 29. N30°13'18"E a distance of 57.32 feet to a point; 30. N36°58'31"E a distance of 53.51 feet to a point; 31. N55°30'27"E a distance of 83.31 feet to a point; 32. N37°30'08"E a distance of 90.99 feet to a point; 33. N39°55'52"E a distance of 54.58 feet to a point; 34. N21°07'26"E a distance of 26.73 feet to a point marked by a 5/8" rebar found; thence, leaving the east bank of the Catawba River along the southwest boundary of Catawba Plantation Phase 6 Subdivision (Map recorded in Map Book 50 Page 385 and Map Book 54 Page 27) S55°46'46"E a distance of 1,894.90 feet to a point marked by a 5/8" rebar found; thence, continuing along the southwest boundary of Catawba Plantation Phase 6 S47°02'15"E a distance of 728.36 feet to a point marked by a concrete monument found; thence continuing along the southwest boundary of Catawba Plantation Phase 6 Subdivision S46°37'45"E a distance of 32.29 feet to a point in the center of a branch; thence, along the centerline of the branch which is the common boundary with Duke Energy Carolinas, LLC (Deed Book 26951, Page 257) the following seventy-five (75) courses: 1. S72°17'36"W a distance of 13.46 feet to a point; 2. N87°53'05"W a distance of 16.69 feet to a point; 3. S78°12'27"W a distance of 11.32 feet to a point; 4. S50°51'36"W a distance of 12.92 feet to a point; 5. S60°14'34"W a distance of 15.03 feet to a point; 6. S41°42'29"W a distance of 9.64 feet to a point; 7. S08°06'04"W a distance of 8.11 feet to a point; 8. S40°56'09"W a distance of 10.09 feet to a point; 9. S77°25'42"W a distance of 14.63 feet to a point; 10. S51°57'29"W a distance of 9.43 feet to a point; 11. S42°30'44"W a distance of 14.94 feet to a point; 12. S61°25'26"W a distance of 13.35 feet to a point; 13. N83°28'05"W a distance of 6.93 feet to a point; 14. S80°37'07"W a distance of 8.26 feet to a point; 15. S66°00'29"W a distance of 11.70 feet to a point; 16. S51°43'18"W a distance of 3.96 feet to a point; 17. S20°37'48"W a distance of 5.45 feet to a point; 18. S16°23'16"E a distance of 7.19 feet to a point; 19. S10°22'01"E a distance of 7.92 feet to a point; 20. S21°44'26"E a distance of 4.19 feet to a point; 21. S02°23'07"E a distance of 8.89 feet to a point; 22. S19°28'12"W a distance of 5.41 feet to a point; 23. S41°45'58"W a distance of 4.02 feet to a point; 24. S89°22'01"W a distance of 11.95 feet to a point; 25. N75°15'17"W a distance of 14.45 feet to a point; 26. S71°40'20"W a distance of 10.99 feet to a point; 27. N80°31'53"W a distance of 10.52 feet to a point; 28. N17°01'32"W a distance of 5.08 feet to a point; 29. N73°03'29"W a distance of 14.65 feet to a point; 30. N56°55'01"W a

distance of 12.83 feet to a point;31.S64°24'50"W a distance of 20.31 feet to a point; 32.S27°37'24"W a distance of 3.20 feet to a point;33. S73°56'49"W a distance of 7.68 feet to a point;34.S63°02'32"W a distance of 5.02 feet to a point;35.S29°24'23"W a distance of 6.42 feet to a point;36. S60°34'08"W a distance of 4.35 feet to a point;37.N86°39'28"W a distance of 6.12 feet to a point; 38.N58°35' 13"W a distance of 5.23 feet to a point;39.N81°18' 07"W a distance of 5.53 feet to a point;40.S69°20' 17"W a distance of 21.44 feet to a point;41.N79°05'12"W a distance of 5.89 feet to a point;42.S45°00'21"W a distance of 6.81 feet to a point;43. S62°31' 16"W a distance of 6.95 feet to a point;44.S82°17'02"W a distance of 7.38 feet to a point;45.N60°56'29"W a distance of 4.03 feet to a point;46.S39°02'51"W a distance of 5.52 feet to a point;47.N68°33 '32"W a distance of 8.06 feet to a point;48.S86°01 '06"W a distance of 5.39 feet to a point;49.S75°45'50"W a distance of 9.73 feet to a point;50.S86°36' 44"W a distance of 6.67 feet to a point;51. S48°14'29"W a distance of 6.47 feet to a point;52.S88°18' 17"W a distance of 14.40 feet to a point;53.S72°13'20"W a distance of 4.82 feet to a point;54. S50°43'16"W a distance of 8.40 feet to a point;55.N85°53'41"W a distance of 9.08 feet to a point;56.S71°49'38"W a distance of 6.77 feet to a point;57.S20°48'01"W a distance of 3.43 feet to a point;58.S61°33'00"W a distance of 6.76 feet to a point;59.S40°02'11"W a distance of 5.66 feet to a point;60.S53°25'08"W a distance of 5.59 feet to a point;61.S69°29'02"W a distance of 3.86 feet to a point;62.S37°03'59"W a distance of 8.51 feet to a point;63.S69°16'24"W a distance of 7.03 feet to a point;64. S02°57'00"W a distance of 20.85 feet to a point;65.S23°09'22"W a distance of 6.90 feet to a point;66.S04°34'52"W a distance of 16.36 feet to a point;67.S54°58'48"W a distance of 6.86 feet to a point;68.N89°41 '05"W a distance of 11.27 feet to a point; 69.S46°08'33"W a distance of 2.23 feet to a point;70.S18°32'09"E a distance of 3.05 feet to a point;71.S64°17'53"W a distance of 9.02 feet to a point;72.S84°28'41"W a distance of 4.93 feet to a point;73.S43°07'55"W a distance of 8.94 feet to a point;74.S51°01 '57"W a distance of 5.67 feet to a point;75.S49°21'57"W a distance of 17.44 feet to a point; thence, leaving the centerline of the branch and continuing along the common boundary with Duke Energy Carolinas, LLC the following three (3) courses: 1. S03°09'31"W a distance of 481.37 feet (passing a 1/2" rebar found at 20.45 feet) to a point marked by a 1/2" rebar found;2.S86°52' 17"E a distance of 353.45 feet to a point marked by a 1/2" rebar found;3.S03°08'09"W a distance of 325.95 feet to a point marked by a 1/2" rebar found on the northeast right of way line of Mount Holly Road, said point being the Point of Beginning.

Section 3. Notice of the public hearing shall be published in the *Mecklenburg Times*, a newspaper having general circulation in the City of Charlotte, at least ten (10) days prior to the date of the public hearing.

**CERTIFICATION**

I, Stephanie C. Kelly, City Clerk of the City of Charlotte, North Carolina, DO HEREBY CERTIFY that the foregoing is a true and exact copy of a Resolution adopted by the City Council of the City of Charlotte, North Carolina, in regular session convened on the 10<sup>th</sup> day of April 2023, the reference having been made in Minute Book 157 and recorded in full in Resolution Book 53, Page(s) 735-737.

WITNESS my hand and the corporate seal of the City of Charlotte, North Carolina, this 10<sup>th</sup> day of April 2023.



*Stephanie C. Kelly*

Stephanie C. Kelly, City Clerk, MMC, NCCMC

RESOLUTION DECLARING INTENT TO ABANDON AND CLOSE A PORTION OF DUPREE STREET RIGHT-OF-WAY in the City of Charlotte, Mecklenburg County, North Carolina.

Whereas, Grady Norton has filed a petition to close a Portion of Dupree Street Right-of-Way in the City of Charlotte; and

Whereas, a Portion of Dupree Street Right-of-Way containing 18,834 square feet or 0.432 acres as shown in the map marked "Exhibit A" and are more particularly described by metes and bounds in the document marked "Exhibit B" all of which are available for inspection in the office of the City Clerk, CMGC, Charlotte, North Carolina; and

Whereas, the procedure for closing streets and alleys as outlined in North Carolina General Statutes, Section 160A-299, requires that City Council first adopt a resolution declaring its intent to close the street and calling a public hearing on the question; said statute further requires that the resolution shall be published once a week for two successive weeks prior to the hearing, and a copy thereof be sent by registered or certified mail to all owners of property adjoining the street as shown on the county tax records, and a notice of the closing and public hearing shall be prominently posted in at least two places along said street or alley.

Now, therefore, be it resolved, by the City Council of the City of Charlotte, at its regularly scheduled session of April 10, 2023, that it intends to close a Portion of Dupree Street Right-of-Way and that said right-of-way (or portion thereof) is more particularly described on a map. The public will take notice that, pursuant 160A-299 of the General Statutes of North Carolina, the City Council of the City of Charlotte has called a public hearing on the closure of a Portion of Dupree Street Right-of-Way, to be conducted at 6:30 p.m., or as soon thereafter as practicable, on Monday, the 8 day of May 2023 at the Charlotte-Mecklenburg Government Center, 600 East Fourth Street; Charlotte, North Carolina 28202. All interested parties are invited to present comments at the public hearing regarding the closure of a Portion of Dupree Street Right-of-Way. To speak at the public hearing, please all the City Clerk's office at 704-336-2248 or sign up online at <https://charlottenc.gov/CityClerk/Pages/Speak.aspx>, or sign up in-person with the City Clerk prior to the start of the public hearing. Anyone requiring special accommodations or information in an alternative format, please email [charlotteada@charlottenc.gov](mailto:charlotteada@charlottenc.gov) or call 704-336-5271.


The City Clerk is hereby directed to publish a copy of this resolution in the Mecklenburg Times once a week for two successive weeks preceding the date fixed here for such hearing as required by N.C.G.S. 160A-299.

**CERTIFICATION**

I, Stephanie C. Kelly, City Clerk of the City of Charlotte, North Carolina, DO HEREBY CERTIFY that the foregoing is a true and exact copy of a Resolution adopted by the City Council of the City of Charlotte, North Carolina, in regular session convened on the 10<sup>th</sup> day of April 2023, the reference having been made in Minute Book 157 and recorded in full in Resolution Book 53, Page(s) 738.

WITNESS my hand and the corporate seal of the City of Charlotte, North Carolina, this 10<sup>th</sup> day of April 2023.



  
Stephanie C. Kelly, City Clerk, MMC, NCCMC

RESOLUTION DECLARING INTENT TO ABANDON AND CLOSE A PORTION OF GREENSBORO STREET AND A PORTION OF RALEIGH STREET RIGHT-OF-WAY in the City of Charlotte, Mecklenburg County, North Carolina.

Whereas, Anthony Kuhn has filed a petition to close a portion of Greensboro Street and Raleigh Street in the City of Charlotte; and

Whereas, a Portion of Greensboro Street and a Portion of Raleigh Street containing 6,136 square feet or 0.1409 acres as shown in the map marked "Exhibit A" and are more particularly described by metes and bounds in the document marked "Exhibit B" all of which are available for inspection in the office of the City Clerk, CMGC, Charlotte, North Carolina; and

Whereas, the procedure for closing streets and alleys as outlined in North Carolina General Statutes, Section 160A-299, requires that City Council first adopt a resolution declaring its intent to close the street and calling a public hearing on the question; said statute further requires that the resolution shall be published once a week for two successive weeks prior to the hearing, and a copy thereof be sent by registered or certified mail to all owners of property adjoining the street as shown on the county tax records, and a notice of the closing and public hearing shall be prominently posted in at least two places along said street or alley.

Now, therefore, be it resolved, by the City Council of the City of Charlotte, at its regularly scheduled session of April 10, 2023, that it intends to close a Portion of Greensboro Street and a Portion of Raleigh Street and that said right-of-way (or portion thereof) is more particularly described on a map. The public will take notice that, pursuant 160A-299 of the General Statutes of North Carolina, the City Council of the City of Charlotte has called a public hearing on the closure of a portion of Greensboro Street and a Portion of Raleigh Street, to be conducted at 6:30 p.m., or as soon thereafter as practicable, on Monday, the 8th day of May 2023 at the Charlotte-Mecklenburg Government Center, 600 East Fourth Street; Charlotte, North Carolina 28202. All interested parties are invited to present comments at the public hearing regarding the closure of a Portion of Greensboro Street and a Portion of Raleigh Street. To speak at the public hearing, please all the City Clerk's office at 704-336-2248 or sign up online at <https://charlottenc.gov/CityClerk/Pages/Speak.aspx>, or sign up in-person with the City Clerk prior to the start of the public hearing. Anyone requiring special accommodations or information in an alternative format, please email [charlotteada@charlottenc.gov](mailto:charlotteada@charlottenc.gov) or call 704-336-5271.

The City Clerk is hereby directed to publish a copy of this resolution in the Mecklenburg Times once a week for two successive weeks preceding the date fixed here for such hearing as required by N.C.G.S. 160A-299.

**CERTIFICATION**

I, Stephanie C. Kelly, City Clerk of the City of Charlotte, North Carolina, DO HEREBY CERTIFY that the foregoing is a true and exact copy of a Resolution adopted by the City Council of the City of Charlotte, North Carolina, in regular session convened on the 10<sup>th</sup> day of April 2023, the reference having been made in Minute Book 157 and recorded in full in Resolution Book 53, Page(s) 739.

WITNESS my hand and the corporate seal of the City of Charlotte, North Carolina, this 10<sup>th</sup> day of April 2023.



*Stephanie C. Kelly*

Stephanie C. Kelly, City Clerk, MMC, NCCMC

**A RESOLUTION AUTHORIZING THE REFUND OF PROPERTY TAXES**

Reference is made to the schedule of "Taxpayers and Refunds Requested" attached to the Docket for consideration of the City Council. On the basis of that schedule, which is incorporated herein, the following facts are found:

1. The City-County Tax Collector has collected property taxes from the taxpayers set out on the list attached to the Docket.
2. The City-County Tax Collector has certified that those taxpayers have made proper demand in writing for refund of the amounts set out on the schedule within the required time limits.
3. The amounts listed on the schedule were collected through either a clerical or assessment error.

NOW, THEREFORE, BE RESOLVED by the City Council of the City of Charlotte, North Carolina, in regular session assembled this 10th day of April that those taxpayers listed on the schedule of "Taxpayers and Refunds Requested" be refunded in the amounts therein set up and that the schedule and this resolution be spread upon the minutes of this meeting.

**CERTIFICATION**

I, Stephanie C. Kelly, City Clerk of the City of Charlotte, North Carolina, DO HEREBY CERTIFY that the foregoing is a true and exact copy of a Resolution adopted by the City Council of the City of Charlotte, North Carolina, in regular session convened on the 10<sup>th</sup> day of April 2023, the reference having been made in Minute Book 157 and recorded in full in Resolution Book 53, Page(s) 740-741.

WITNESS my hand and the corporate seal of the City of Charlotte, North Carolina, this 10<sup>th</sup> day of April 2023.



*Stephanie C. Kelly*

Stephanie C. Kelly, City Clerk, MMC, NCCMC



**Taxpayers and Refunds Requested**

BLANCHARD TERMINAL COMPANY LLC	108.05
NAVIGATOR GROUP LLC THE	41.79
TREFFEISEN MEDIA LLC	17.60
UNITED RENTALS (NORTH AMERICA) INC 0001-1071	31,706.39
UNITED RENTALS NORTH AMERICA INC 0001 1262	46,973.05
UNITED RENTALS NORTH AMERICA INC 0001 2163	19.02
UPCHURCH PARTNERSHIP	108.14
VOWELL, PENNY	5.49
VOWELL, PENNY	8.19
VOWELL, PENNY	13.97
VOWELL, PENNY	16.35
VOWELL, PENNY	27.11
VOWELL, PENNY	41.35
VOWELL, PENNY	47.61
VOWELL, PENNY	78.55
VOWELL, PENNY	104.81
VOWELL, PENNY	119.93
VOWELL, PENNY	177.63
VOWELL, PENNY	195.16
VOWELL, PENNY	295.29
VOWELL, PENNY	480.95
VOWELL, PENNY	1,129.05
VOWELL, PENNY	2,029.33
VOWELL, PENNY	2,093.07
VOWELL, PENNY	3,782.30
VOWELL, PENNY	78,938.43
	<u>\$ 168,558.61</u>

A RESOLUTION AUTHORIZING CONDEMNATION PROCEEDINGS  
FOR THE ACQUISITION OF CERTAIN REAL PROPERTY

WHEREAS, the City Council of the City of Charlotte finds as a fact that it is necessary to acquire certain property as indicated below for the **CLARKE CREEK BASIN PS & FM** Project; and

WHEREAS, the City either in good faith has undertaken to negotiate for the purchase of this property but has been unable to reach an agreement with the owners for the purchase price or, after reasonable diligence, has been unable to negotiate a purchase price;

NOW, THEREFORE, BE IT RESOLVED by the City Council of The City of Charlotte that condemnation proceedings are hereby authorized to be instituted against the property indicated below, under the authority and procedures of the laws of the State of North Carolina:

PROPERTY DESCRIPTION:

Amount necessary for the **CLARKE CREEK BASIN PS & FM** Project estimated to be:

**622 sq. ft. (0.01 ac.) in Permanent Sewer Easement**  
**118 sq. ft. (0.00 ac.) in Temporary Construction Easement**

and any additional property or interest as the City may determine to complete the Project as it relates to **Tax Parcel No. 019-341-05**; said property currently owned by **Michael L. Tinsley and Tracy W. Tinsley** and or their owners' successors in interest.

ESTIMATED JUST COMPENSATION:

Such estimated just compensation as may be determined based upon the takings required by the final construction plans.

IT IS FURTHER RESOLVED that the estimated just compensation for the property is hereby authorized to be deposited in the Office of the Clerk of Superior Court, Mecklenburg County, North Carolina, together with the filing of the Complaint and Declaration of Taking.

**CERTIFICATION**

I, Stephanie C. Kelly, City Clerk of the City of Charlotte, North Carolina, DO HEREBY CERTIFY that the foregoing is a true and exact copy of a Resolution adopted by the City Council of the City of Charlotte, North Carolina, in regular session convened on the 10<sup>th</sup> day of April 2023, the reference having been made in Minute Book 157 and recorded in full in Resolution Book 53, Page(s) 742.

WITNESS my hand and the corporate seal of the City of Charlotte, North Carolina, this 10<sup>th</sup> day of April 2023.



*Stephanie C. Kelly*

Stephanie C. Kelly, City Clerk, MMC, NCCMC

A RESOLUTION AUTHORIZING CONDEMNATION PROCEEDINGS  
FOR THE ACQUISITION OF CERTAIN REAL PROPERTY

WHEREAS, the City Council of the City of Charlotte finds as a fact that it is necessary to acquire certain property as indicated below for the **CLARKE CREEK BASIN PS & FM** Project; and

WHEREAS, the City either in good faith has undertaken to negotiate for the purchase of this property but has been unable to reach an agreement with the owners for the purchase price or, after reasonable diligence, has been unable to negotiate a purchase price;

NOW, THEREFORE, BE IT RESOLVED by the City Council of The City of Charlotte that condemnation proceedings are hereby authorized to be instituted against the property indicated below, under the authority and procedures of the laws of the State of North Carolina:

PROPERTY DESCRIPTION:

Amount necessary for the **CLARKE CREEK BASIN PS & FM** Project estimated to be:

**45,739 sq. ft. (1.05 ac.) in Permanent Sewer Easement**  
**29,072 sq. ft. (0.67 ac.) in Temporary Construction Easement**

and any additional property or interest as the City may determine to complete the Project as it relates to **Tax Parcel No. 019-341-03 & 019-341-04**; said property currently owned by **Robert Gene Baucom and Gail B. Long** and or their owners' successors in interest.

ESTIMATED JUST COMPENSATION:

Such estimated just compensation as may be determined based upon the takings required by the final construction plans.

IT IS FURTHER RESOLVED that the estimated just compensation for the property is hereby authorized to be deposited in the Office of the Clerk of Superior Court, Mecklenburg County, North Carolina, together with the filing of the Complaint and Declaration of Taking.

CERTIFICATION

I, Stephanie C. Kelly, City Clerk of the City of Charlotte, North Carolina, DO HEREBY CERTIFY that the foregoing is a true and exact copy of a Resolution adopted by the City Council of the City of Charlotte, North Carolina, in regular session convened on the 10<sup>th</sup> day of April 2023, the reference having been made in Minute Book 157 and recorded in full in Resolution Book 53, Page(s) 743.

WITNESS my hand and the corporate seal of the City of Charlotte, North Carolina, this 10<sup>th</sup> day of April 2023.



  
\_\_\_\_\_  
Stephanie C. Kelly, City Clerk, MMC, NCCMC

A RESOLUTION AUTHORIZING CONDEMNATION PROCEEDINGS  
FOR THE ACQUISITION OF CERTAIN REAL PROPERTY

WHEREAS, the City Council of the City of Charlotte finds as a fact that it is necessary to acquire certain property as indicated below for the **CLARKE CREEK BASIN PS & FM** Project; and

WHEREAS, the City either in good faith has undertaken to negotiate for the purchase of this property but has been unable to reach an agreement with the owners for the purchase price or, after reasonable diligence, has been unable to negotiate a purchase price;

NOW, THEREFORE, BE IT RESOLVED by the City Council of The City of Charlotte that condemnation proceedings are hereby authorized to be instituted against the property indicated below, under the authority and procedures of the laws of the State of North Carolina:

PROPERTY DESCRIPTION:

Amount necessary for the **CLARKE CREEK BASIN PS & FM** Project estimated to be:

**34,423 sq. ft. (0.79 ac.) in Permanent Sewer Easement**  
**22,027 sq. ft. (0.51 ac.) in Temporary Construction Easement**

and any additional property or interest as the City may determine to complete the Project as it relates to **Tax Parcel No. 019-111-07**; said property currently owned by **Gloria E. Johnston and Judith Johnston** and or their owners' successors in interest.

ESTIMATED JUST COMPENSATION:

Such estimated just compensation as may be determined based upon the takings required by the final construction plans.

IT IS FURTHER RESOLVED that the estimated just compensation for the property is hereby authorized to be deposited in the Office of the Clerk of Superior Court, Mecklenburg County, North Carolina, together with the filing of the Complaint and Declaration of Taking.

**CERTIFICATION**

I, Stephanie C. Kelly, City Clerk of the City of Charlotte, North Carolina, DO HEREBY CERTIFY that the foregoing is a true and exact copy of a Resolution adopted by the City Council of the City of Charlotte, North Carolina, in regular session convened on the 10<sup>th</sup> day of April 2023, the reference having been made in Minute Book 157 and recorded in full in Resolution Book 53, Page(s) 744.

WITNESS my hand and the corporate seal of the City of Charlotte, North Carolina, this 10<sup>th</sup> day of April 2023.



A handwritten signature in cursive script that reads 'Stephanie C. Kelly'.

Stephanie C. Kelly, City Clerk, MMC, NCCMC

A RESOLUTION AUTHORIZING CONDEMNATION PROCEEDINGS  
FOR THE ACQUISITION OF CERTAIN REAL PROPERTY

WHEREAS, the City Council of the City of Charlotte finds as a fact that it is necessary to acquire certain property as indicated below for **PROSPERITY CHURCH ROAD (OLD RIDGE TO BENFIELD)**; and

WHEREAS, the City either in good faith has undertaken to negotiate for the purchase of this property but has been unable to reach an agreement with the owners for the purchase price or, after reasonable diligence, has been unable to negotiate a purchase price;

NOW, THEREFORE, BE IT RESOLVED by the City Council of The City of Charlotte that condemnation proceedings are hereby authorized to be instituted against the property indicated below, under the authority and procedures of the laws of the State of North Carolina:

PROPERTY DESCRIPTION:

Amount necessary for the **PROSPERITY CHURCH ROAD (OLD RIDGE TO BENFIELD)** and estimated to be:

268 sq. ft. (0.006 ac.) **Fee Simple**  
359sq. ft. (0.008 ac.) **Temporary Construction Easement**

and any additional property or interest as the City may determine to complete the Project as it relates to Tax Parcel No. 027-561-04 said property currently owned by **RK POINTE AT PROSPERITY VILLAGE DST**, or their owners' successors in interest.

ESTIMATED JUST COMPENSATION:

Such estimated just compensation as may be determined based upon the takings required by the final construction plans.

IT IS FURTHER RESOLVED that the estimated just compensation for the property is hereby authorized to be deposited in the Office of the Clerk of Superior Court, Mecklenburg County, North Carolina, together with the filing of the Complaint and Declaration of Taking.

CERTIFICATION

I, Stephanie C. Kelly, City Clerk of the City of Charlotte, North Carolina, DO HEREBY CERTIFY that the foregoing is a true and exact copy of a Resolution adopted by the City Council of the City of Charlotte, North Carolina, in regular session convened on the 10<sup>th</sup> day of April 2023, the reference having been made in Minute Book 157 and recorded in full in Resolution Book 53, Page(s) 745.

WITNESS my hand and the corporate seal of the City of Charlotte, North Carolina, this 10<sup>th</sup> day of April 2023.



*Stephanie C. Kelly*

Stephanie C. Kelly, City Clerk, MMC, NCCMC