



---

# **Charlotte Water Interbasin Transfer (IBT) Modification Request**

**PLEASE WAIT FOR THE MEETING TO BEGIN**

# Agenda

## ▶ **Introductions**

- Angela Charles, Director Charlotte Water

## ▶ **IBT Program Overview**

- Harold Brady, North Carolina Department of Environmental Quality, Division of Water Resources

## ▶ **Charlotte Water IBT Modification Request**

- Ron Hargrove, Deputy Director Charlotte Water

## ▶ **Questions/Comments**



## **IBT Program Overview**

Public Meetings for  
Requested Charlotte Water IBT Modification  
May 8, 9, 15, & June TBD, 2024  
Harold Brady, Division of Water Resources



# *Outline*

- I. Interbasin Transfer (IBT) Definition
- II. Statutory Requirements
- III. IBT Process
- IV. EMC Decision Considerations



# *IBT Definition & Purpose*

- The withdrawal of surface water from one river basin and discharge of all or any part of the water in a river basin different from the origin.
- The purpose of the Interbasin Transfer Law is to ensure it is good public policy to move water from one river basin into another.



# *Statutory Thresholds*

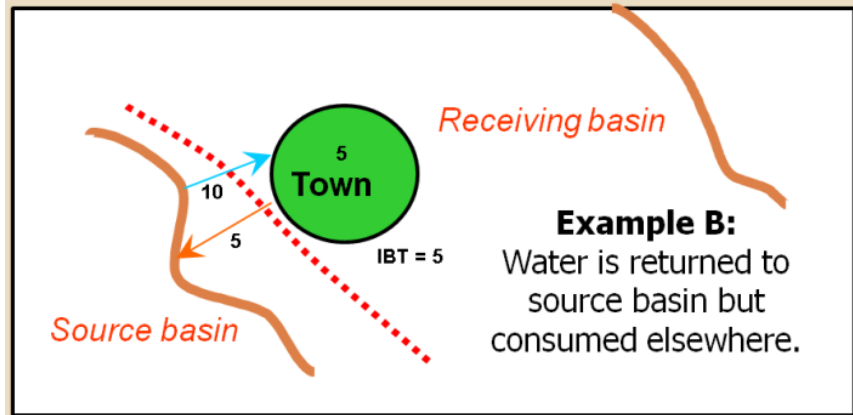
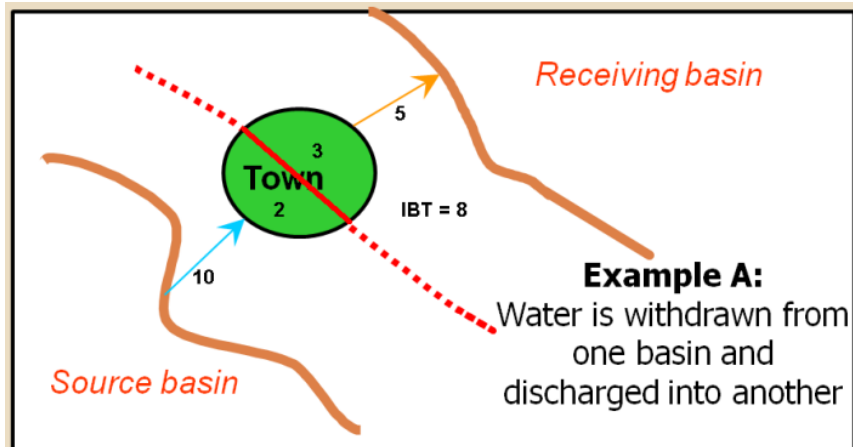
## **§ 143-215.22L Regulation of surface water transfers.**

- (a) Certificate Required. - No person, without first obtaining a certificate from the Commission, may:
1. Initiate a transfer of 2,000,000 gallons of water or more per day, calculated as a daily average of a calendar month and not to exceed 3,000,000 gallons per day in any one day, from one river basin to another.
  2. Increase the amount of an existing transfer of water from one river basin to another by twenty-five percent (25%) or more above the average daily amount transferred during the year ending 1 July 1993 if the total transfer including the increase is 2,000,000 gallons or more per day.
  3. Increase an existing transfer of water from one river basin to another above the amount approved by the Commission in a certificate issued under G.S. 162A-7 prior to 1 July 1993.



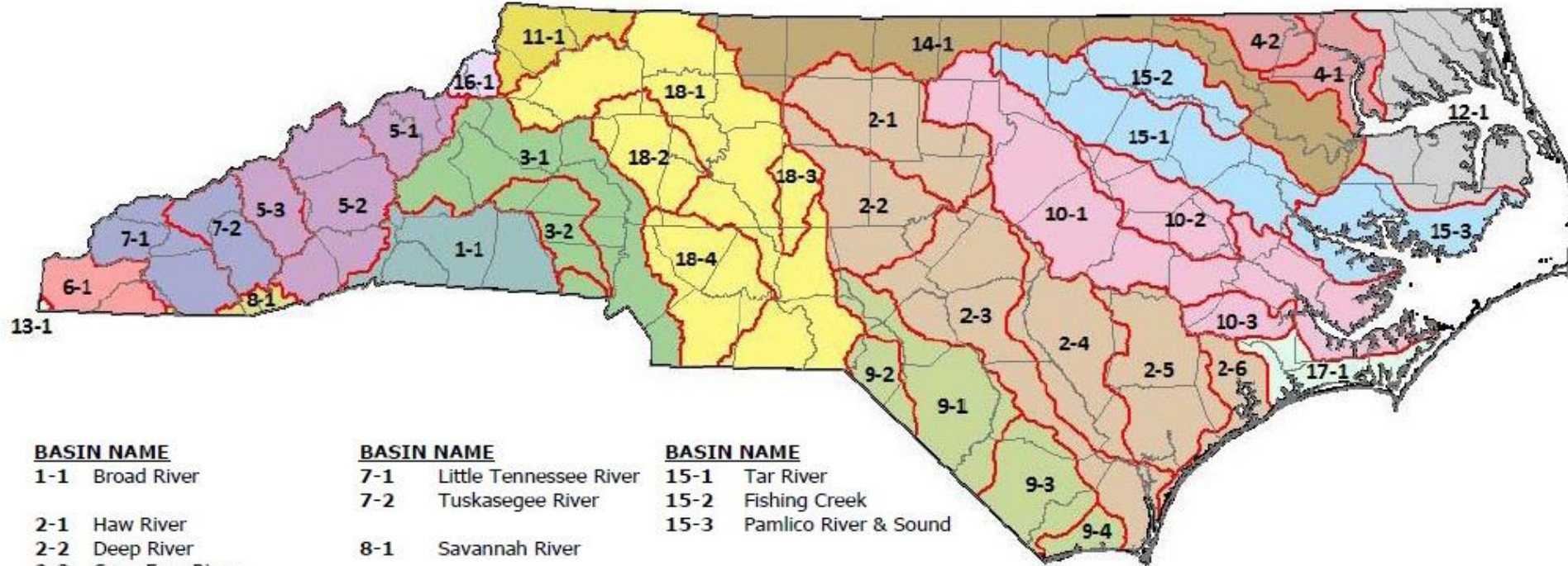
# What is an Interbasin Transfer?

- Transfer = Withdrawal – Return
  - Net Transfer, Not Gross



The amount of a transfer is determined by the amount of water moved from the source basin to the receiving basin, less the amount of water returned to the source basin and consumptive use in the source basin.

# Designated Interbasin Transfer River Basins As defined in G.S. §143-215.22G



**BASIN NAME**

- 1-1 Broad River
- 2-1 Haw River
- 2-2 Deep River
- 2-3 Cape Fear River
- 2-4 South River
- 2-5 Northeast Cape Fear River
- 2-6 New River
- 3-1 Catawba River
- 3-2 South Fork Catawba River
- 4-1 Chowan River
- 4-2 Meherrin River
- 5-1 Nolichucky River
- 5-2 French Broad River
- 5-3 Pigeon River
- 6-1 Hiwassee River

**BASIN NAME**

- 7-1 Little Tennessee River
- 7-2 Tuskasegee River
- 8-1 Savannah River
- 9-1 Lumber River
- 9-2 Big Shoe Heel Creek
- 9-3 Waccamaw River
- 9-4 Shallotte River
- 10-1 Neuse River
- 10-2 Contentnea Creek
- 10-3 Trent River
- 11-1 New River
- 12-1 Albemarle Sound
- 13-1 Ocoee River
- 14-1 Roanoke River

**BASIN NAME**

- 15-1 Tar River
- 15-2 Fishing Creek
- 15-3 Pamlico River & Sound
- 16-1 Watauga River
- 17-1 White Oak River
- 18-1 Yadkin River
- 18-2 South Yadkin River
- 18-3 Uwharrie River
- 18-4 Rocky River





# *Water Transfers in North Carolina*

- Over 130 public water systems with surface water transfers
- 80% are under 1 MGD
- Nine IBT Certificates have been issued
- One previous IBT Certificate Modification has been granted
- Grandfathered allowance for systems that were transferring over 2 MGD prior to July 1993
- Handful of water systems transferring between 1-2 MGD



# *Transfers Regulated by IBT Certificate*

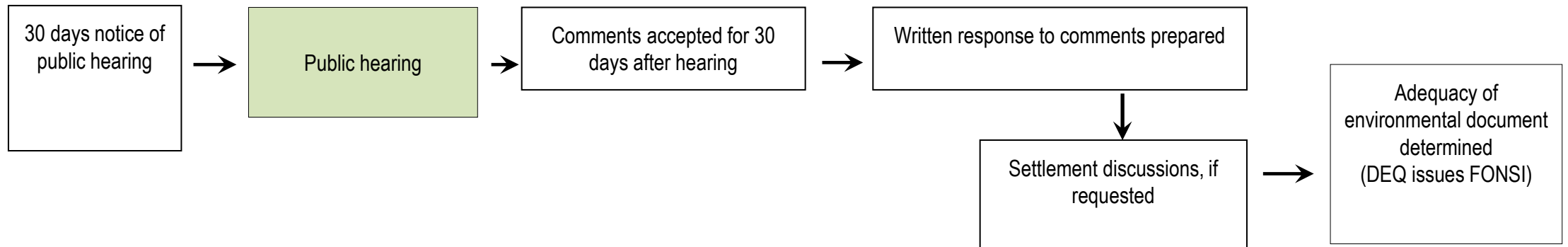
|    | System/Certificate Holder(s)  | Year | Amount                           | Source Basin(s)    | Receiving Basin(s)                             |
|----|---|------|----------------------------------|--------------------|--|
| 1. | Piedmont Triad Regional Water Authority   | 1991 | 30.5 MGD                         | Deep River         | Haw River, Yadkin River                        |
| 2. | Charlotte Water   | 2002 | 33 MGD                           | Catawba            | Rocky River                                    |
| 3. | Cities of Concord and Kannapolis  | 2007 | 10 MGD/<br>10 MGD                | Catawba/<br>Yadkin | Rocky River                                    |
| 4. | Greenville Utilities Commission, the Towns of Farmville and Winterville, and Greene Co.               | 2010 | 8.3 MGD/<br>4.0 MGD              | Tar River          | Contentnea Creek/<br>Neuse River               |
| 5. | Brunswick County  | 2013 | 17 MGD                           | Cape Fear          | Shalotte and Waccamaw                          |
| 6. | Towns of Cary and Apex  | 2015 | 31.0 MGD/<br>2.0 MGD             | Haw River          | Neuse River/<br>Cape Fear River                |
| 7. | Kerr Lake Regional Water System   | 2015 | 10.7 MGD/<br>1.7 MGD/<br>1.8 MGD | Roanoke            | Tar River/<br>Fishing Creek/<br>Neuse River    |
| 8. | Union County and Town of Wingate  | 2017 | 23.0 MGD                         | Yadkin River       | Rocky River                                    |
| 9. | Pender County Utilities and Towns of Burgaw, Topsail Beach, Surf City and Wallace and Utilities, Inc. | 2018 | 14.5 MGD                         | Cape Fear          | South River, New River,<br>Northeast Cape Fear |



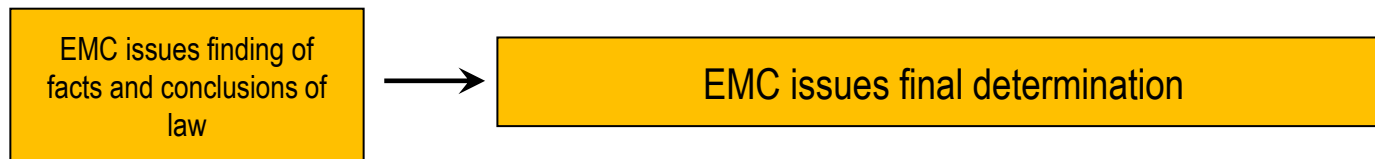
# ***IBT Process § 143-215.22L(v)***

I. Applicant submits Notice of Intent to file a request for modification.

II. Applicant submits draft environmental document (EA)



III. EMC issues final determination



# *EMC Decision Considerations*

- The EMC may grant a Petition in whole or in part, or deny it, and may require mitigation measures to minimize detrimental effects.
- In making this determination, the EMC is required to specifically consider:



# *Findings of Fact - §143-215.22L*

The EMC shall specifically consider:

1. The necessity, reasonableness, and proposed uses of water transferred.
2. Present and reasonably foreseeable detrimental effects on the source basin.
3. Cumulative effects on the source major river basin of any water transfer or consumptive water use currently authorized or projected in a Local Water Supply Plan.
4. Present and reasonably foreseeable beneficial and detrimental effects on the receiving basin.
5. The availability of reasonable alternatives to the proposed transfer.
6. Use of impoundment storage capacity, if applicable.
7. Purposes and water storage allocations in a US Army Corps of Engineers multipurpose reservoir.
8. Whether the service area of the applicant is within both the source and receiving basin.
9. Any other facts or circumstances reasonably necessary.



# *Conditions/Limitations on IBT Certificate*

Specific conditions required by statute:

- Submittal for Division approval
  - Water Conservation Plan
  - Drought Management Plan
  - Compliance and Monitoring Plan
- Quarterly Monitoring Reports
- Ability to reopen, amend, and modify, if necessary
- No selling of transferred water to water systems that are not co-applicants on the Certificate

EMC may impose additional conditions as necessary



# *Contact Information*

Harold Brady

Division of Water Resources

919-707-9005

[harold.m.brady@deq.nc.gov](mailto:harold.m.brady@deq.nc.gov)

DWR Charlotte Water IBT website:

<https://www.deq.nc.gov/about/divisions/water-resources/water-planning/water-supply-planning/interbasin-transfer-certification/charlotte-water>





---

# **Charlotte Water Interbasin Transfer (IBT) Modification Request**

**PUBLIC MEETINGS, MAY 8, 9, 15 & JUNE TBD, 2024**

**SUBMIT QUESTIONS & COMMENTS TO: [IBTProject@charlottenc.gov](mailto:IBTProject@charlottenc.gov)**



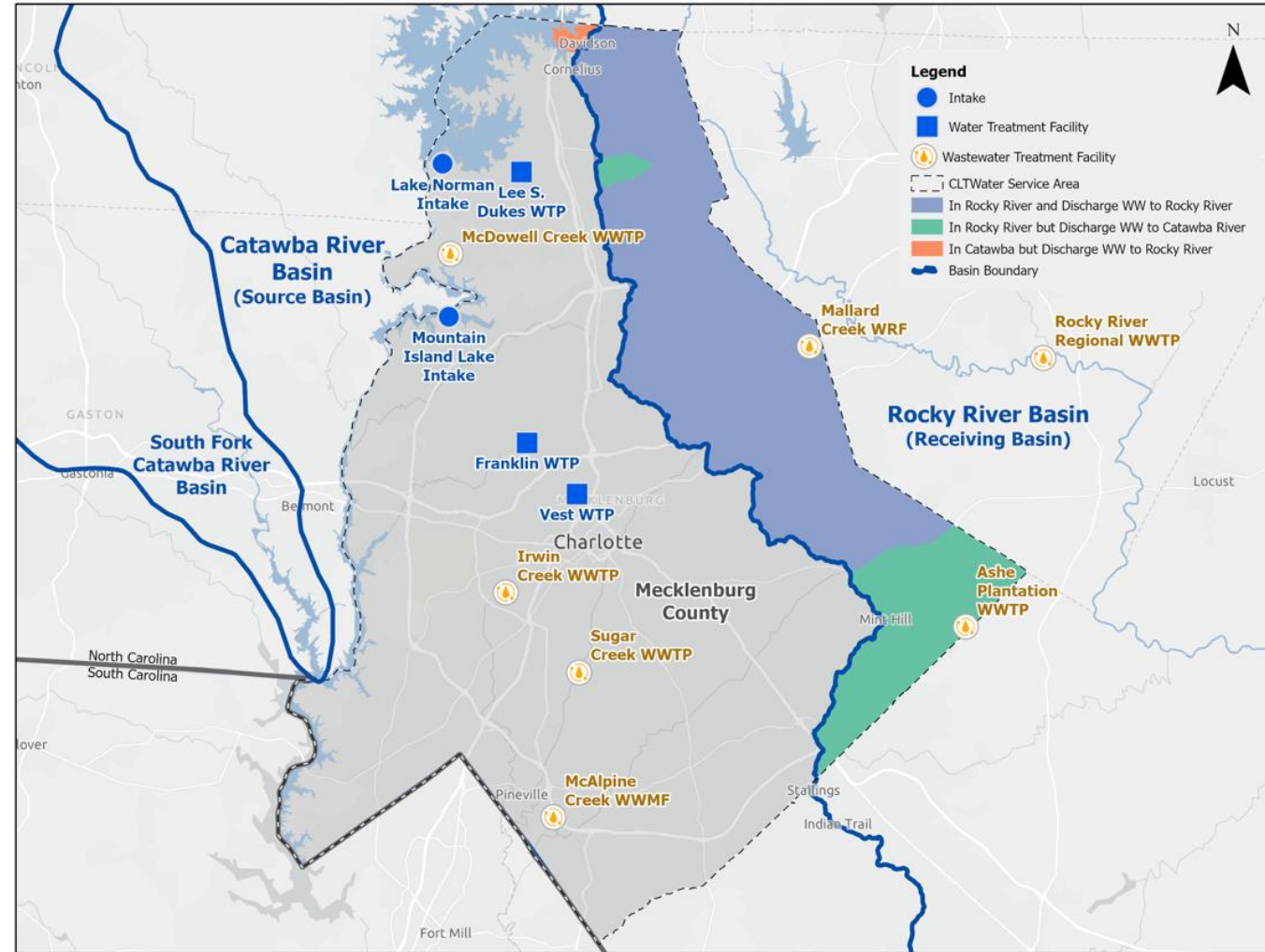
# Presentation Outline

- ▶ **About Charlotte Water**
- ▶ **What is an IBT?**
- ▶ **Why is an IBT modification needed now?**
- ▶ **What is the IBT modification process and schedule?**
- ▶ **What alternatives are being considered?**
- ▶ **How can I comment and participate in the process?**
- ▶ **Questions**

# About Charlotte Water

# About Charlotte Water

- ▶ **Service Area includes Mecklenburg County and surrounding counties with customers in both Catawba & Rocky River Basins**
- ▶ **Largest public water and wastewater utility in NC**
- ▶ **Population Served – 1,145,392**



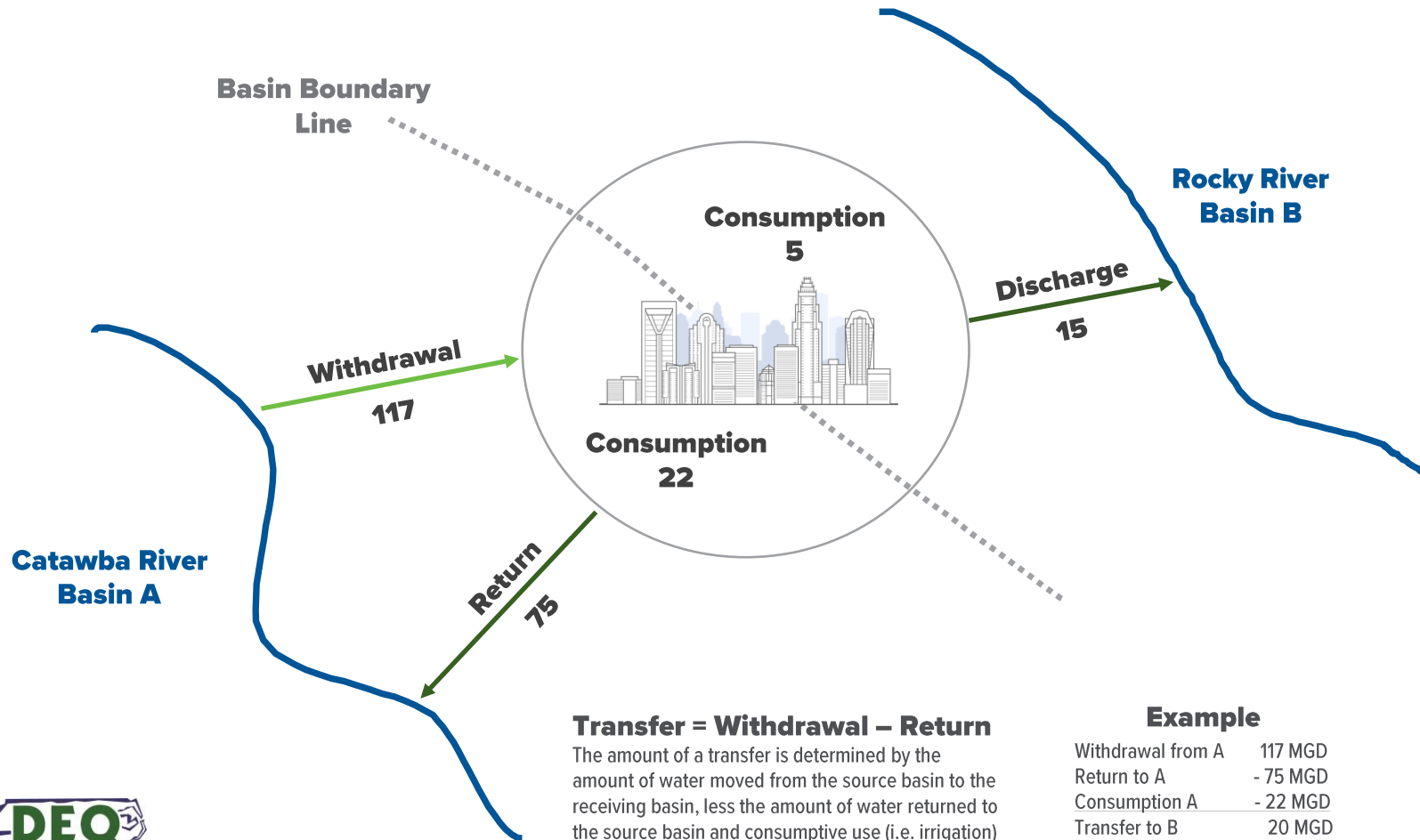
# Proactive Planning

- ▶ **2002 – Initial IBT of 33 MGD Peak Day**
- ▶ **Now planning for next 30 years before the limit is exceeded**
- ▶ **Long-term Partner with Catawba Water and Water Management Group and Other Stakeholders**
- ▶ **Local and Regional Conservation and Drought Planning**

As projected, the original IBT supports Charlotte Water's system through approximately 2030. Additional water through the modification process is timely.

# **What is an Interbasin Transfer (IBT)?**

# What is an Interbasin Transfer (IBT)?



### Transfer = Withdrawal – Return

The amount of a transfer is determined by the amount of water moved from the source basin to the receiving basin, less the amount of water returned to the source basin and consumptive use (i.e. irrigation) in the source basin.

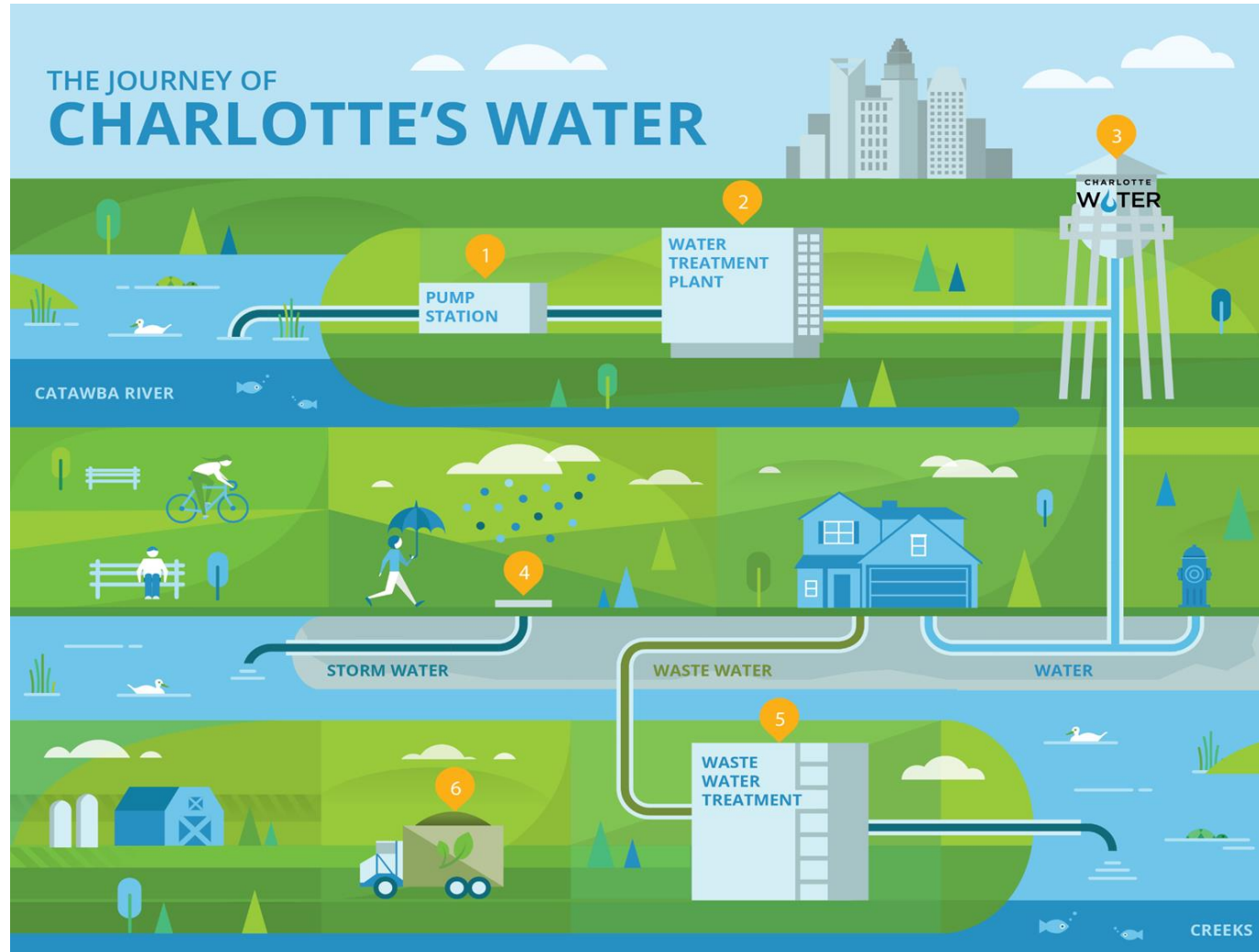
### Example

|                      |               |
|----------------------|---------------|
| Withdrawal from A    | 117 MGD       |
| Return to A          | - 75 MGD      |
| Consumption A        | - 22 MGD      |
| <b>Transfer to B</b> | <b>20 MGD</b> |

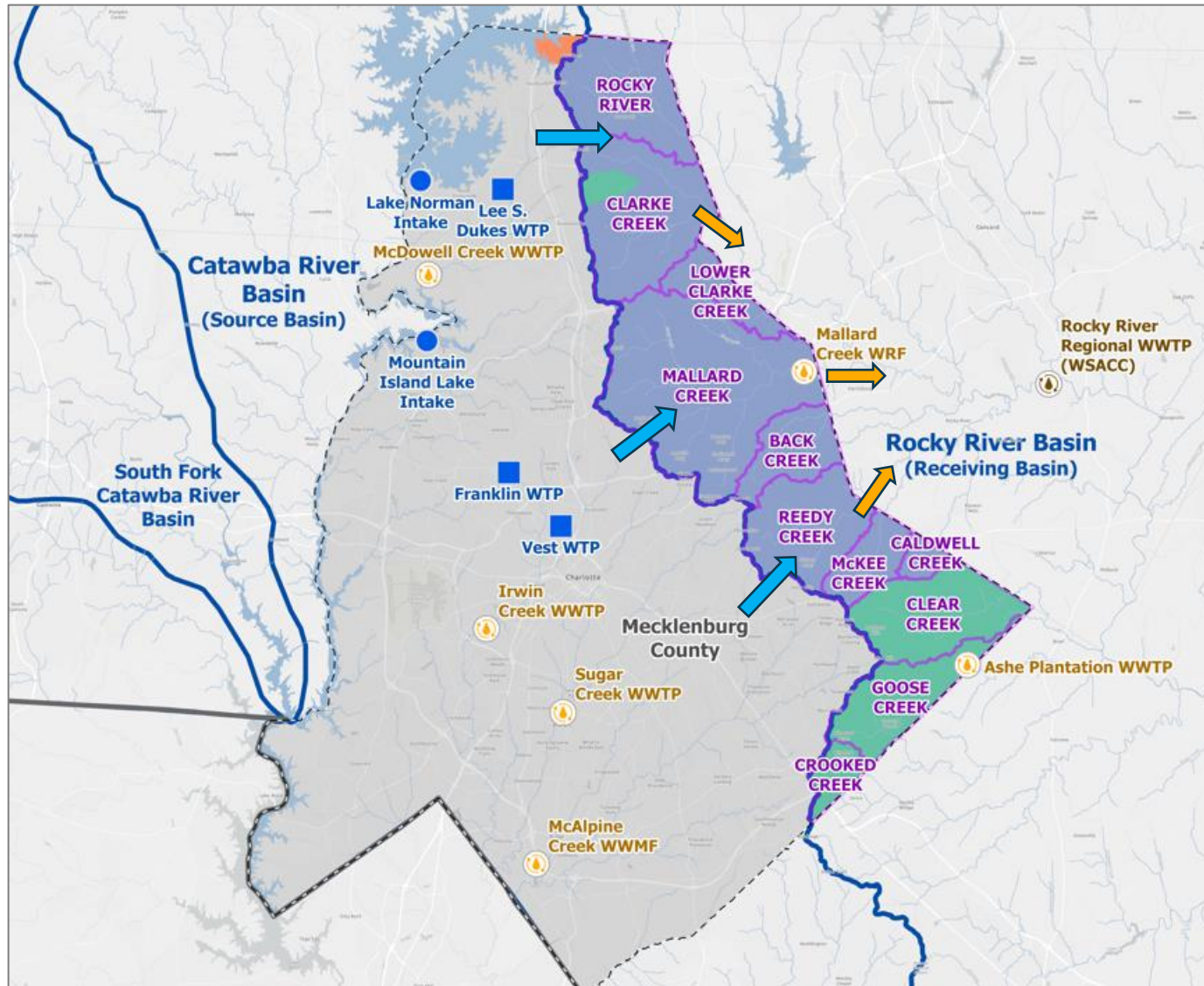
An IBT is a withdrawal, diversion or pumping of water from one source river basin to another river basin. The water from the source basin is treated and distributed to customers for everyday water usage, then collected and treated at wastewater treatment plants before portions are discharged to the receiving basin, resulting in the interbasin transfer.



# Charlotte's Water Cycle



# What is an IBT?



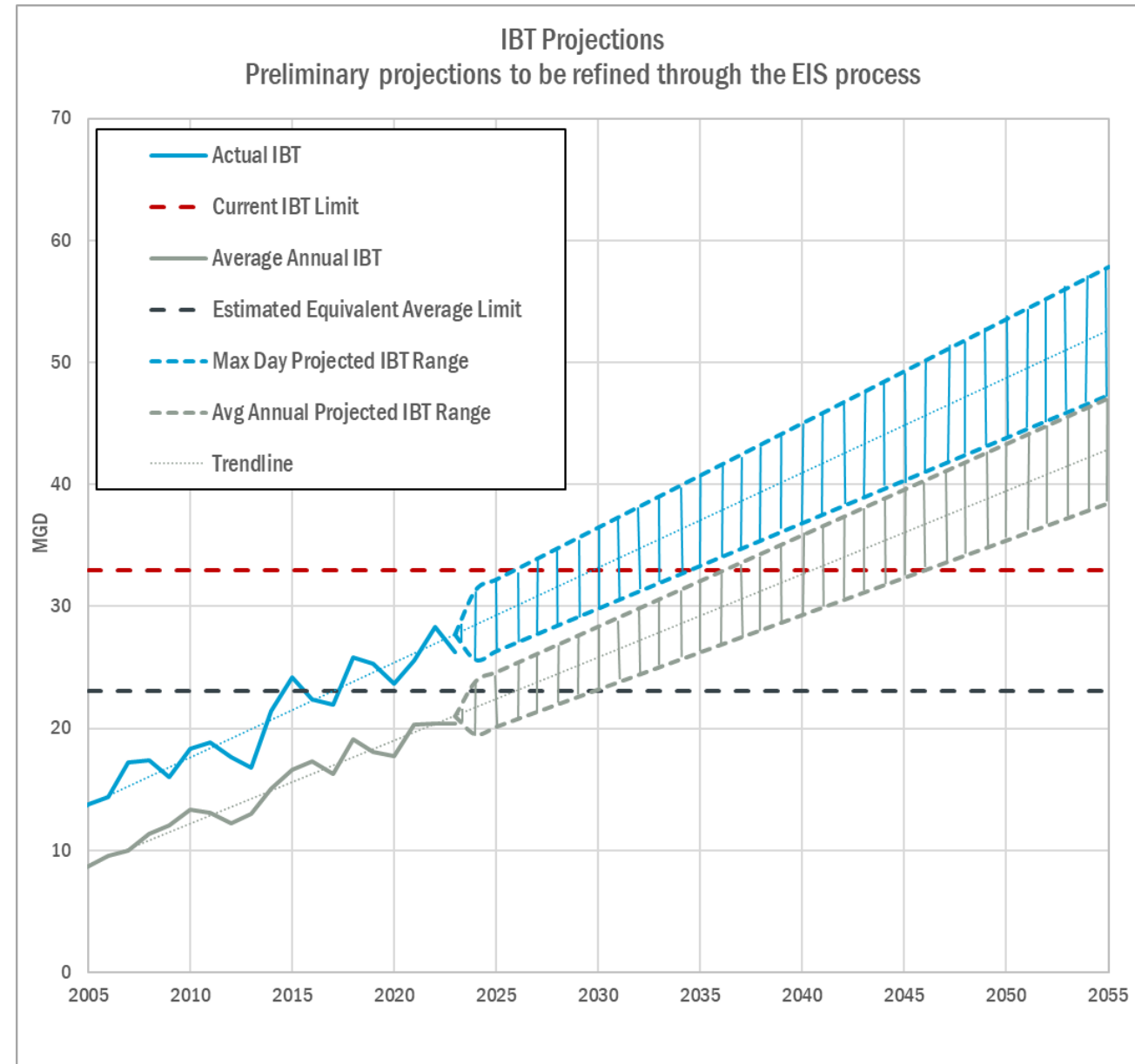
An IBT is a withdrawal, diversion or pumping of water from one source river basin to another river basin. The water from the source basin is treated and distributed to customers for everyday water usage, then collected and treated at wastewater treatment plants before portions are discharged to the receiving basin, resulting in the interbasin transfer.



# **Why is an IBT Modification needed now?**

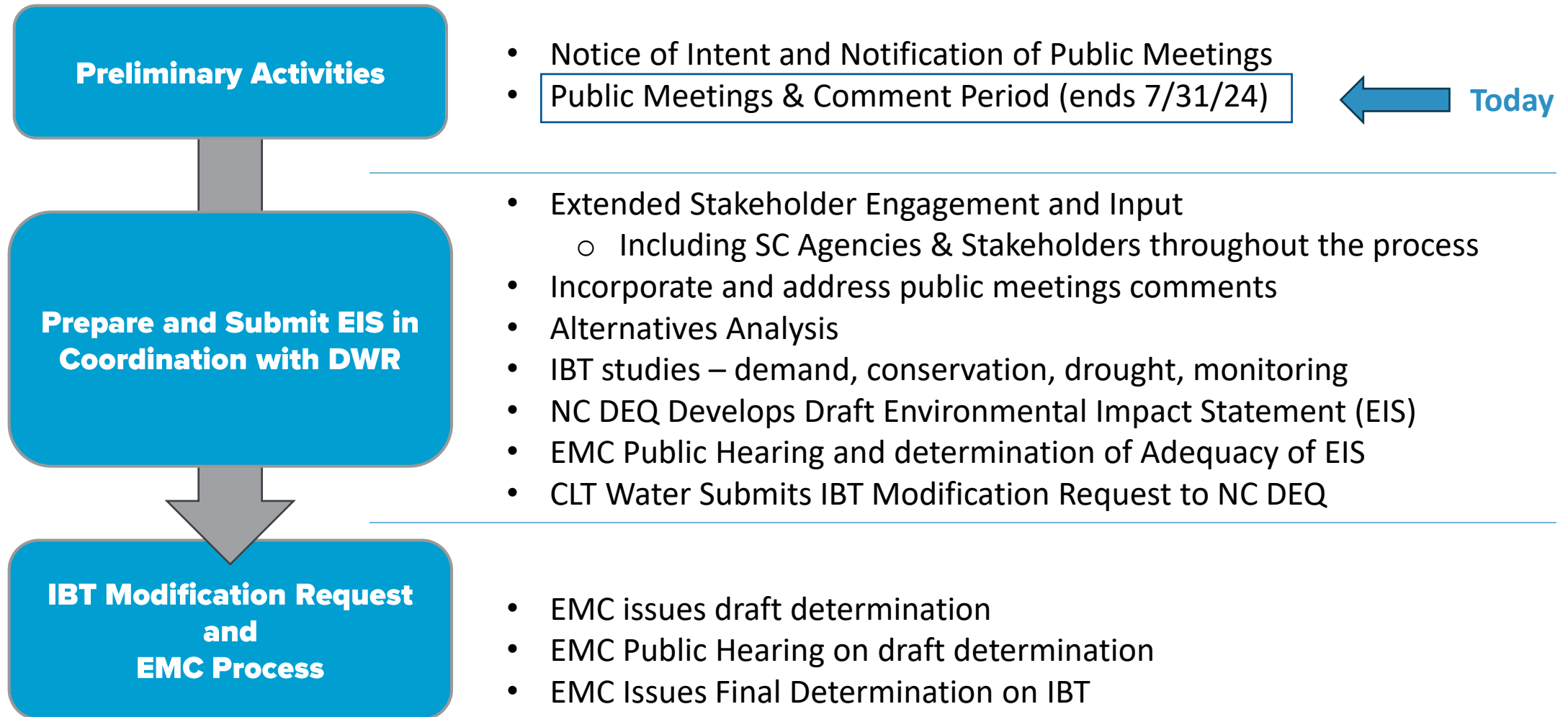
# Why is an IBT Needed?

- ▶ **2002 IBT Certification limit is 33 MGD Peak Day**
- ▶ **Currently at 79% of limit**
- ▶ **Based on population projections, current IBT will be exceeded between 2028-2030 as previously planned**

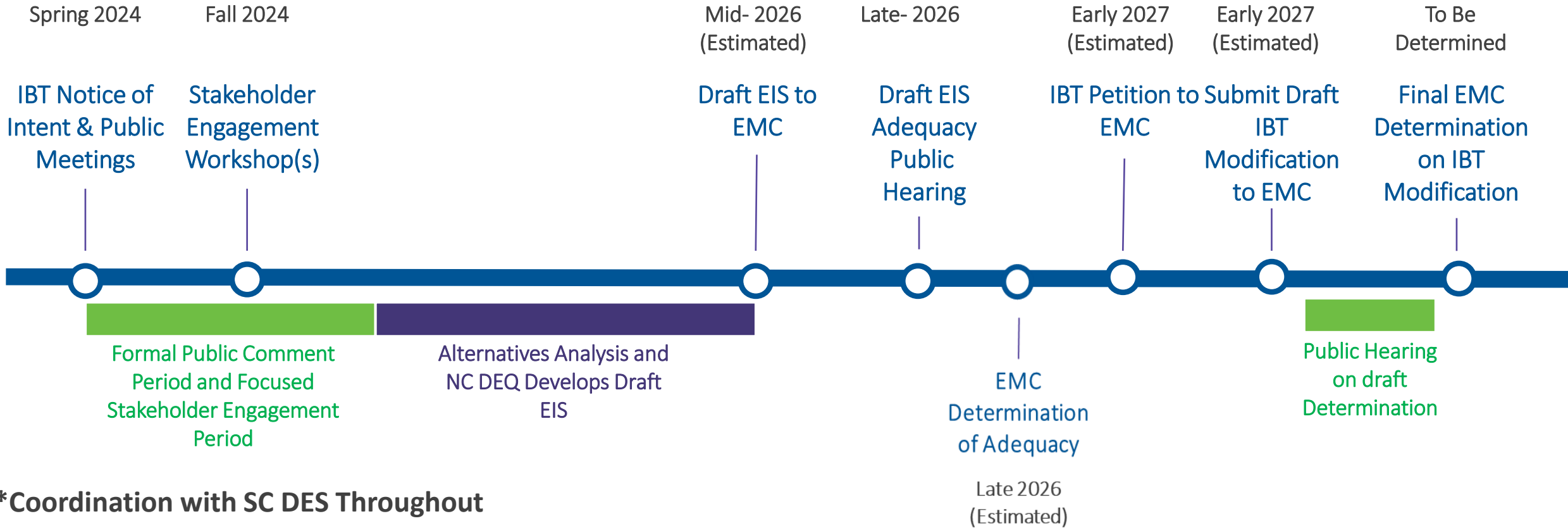


# **What is the IBT modification process and schedule?**

# IBT Modification and EIS Development Process



# IBT Modification Preliminary Schedule\*



**\*Coordination with SC DES Throughout**

**Acronyms:**

- EIS – Environmental Impact Statement
- IBT – Interbasin Transfer
- NC EMC – NC Environmental Management Commission
- NC DEQ – NC Department of Environmental Quality

# IBT Notification Map

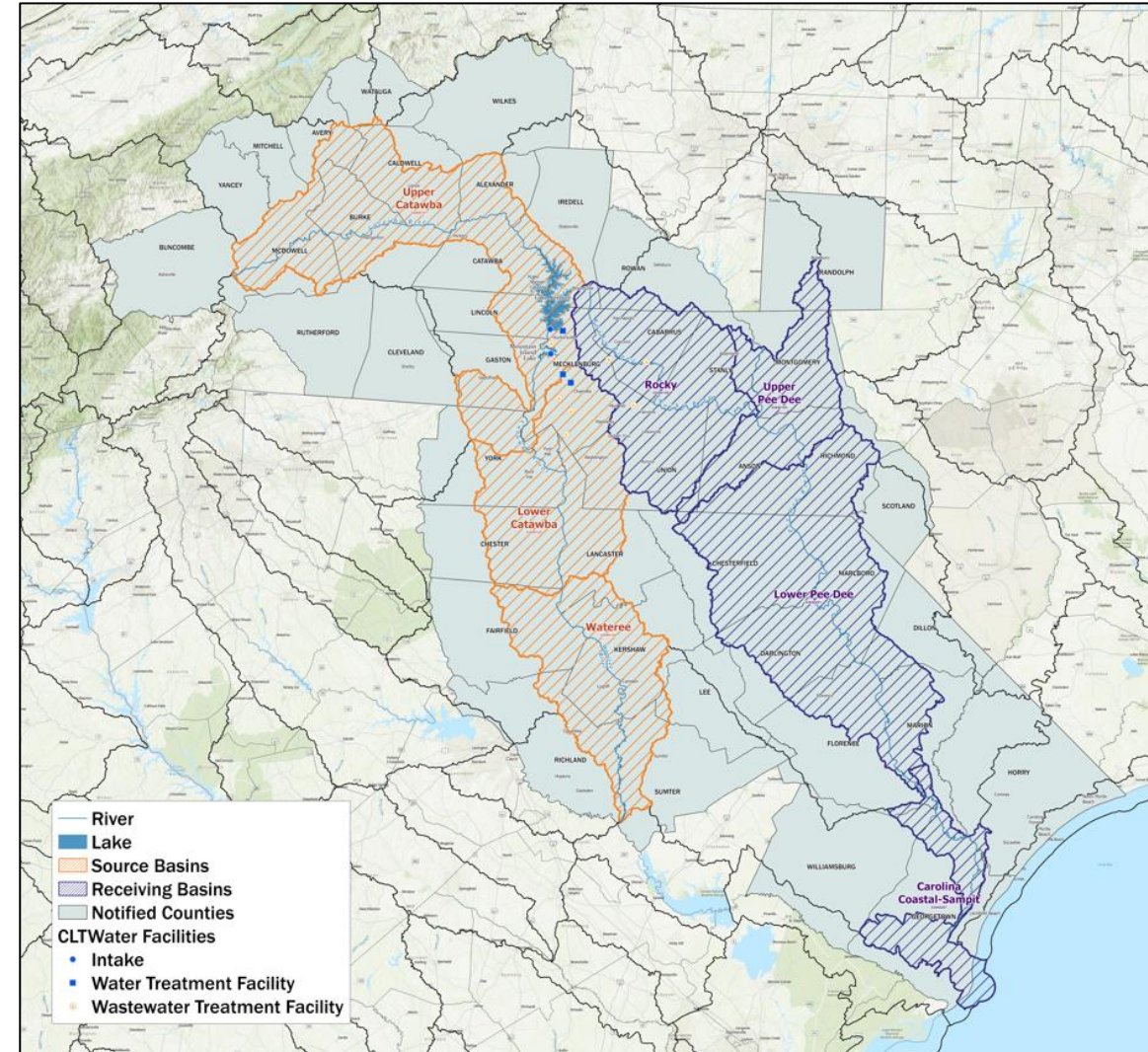
## ▶ Notification Requirements – Counties/Cities in Key HUC8 Watersheds

- Governing body of each local government
- Public water supply systems
- Registered water withdrawal/transfers
- IBT Certification holders
- NPDES permit holders

## ▶ NC-SC Settlement Agreement Notification List

## ▶ Other Identified Stakeholders

- NGOs, Non-Profits, COGs, Tribal Governments, Industries, etc.



# **What alternatives are being considered?**

# Preliminary Alternatives

## ▶ **Alternative Categories Being Considered**

- Pump wastewater back to the Catawba Basin
- Water reuse options
- New water sources in the Yadkin Basin
- Increase existing IBT through modification

## ▶ **Alternatives Evaluation Criteria**

- Capital costs
- Schedule
- O&M costs
- Benefits/risks
- Environmental factors
- Construction feasibility

## ▶ **Actionable alternatives raised during scoping will be considered**

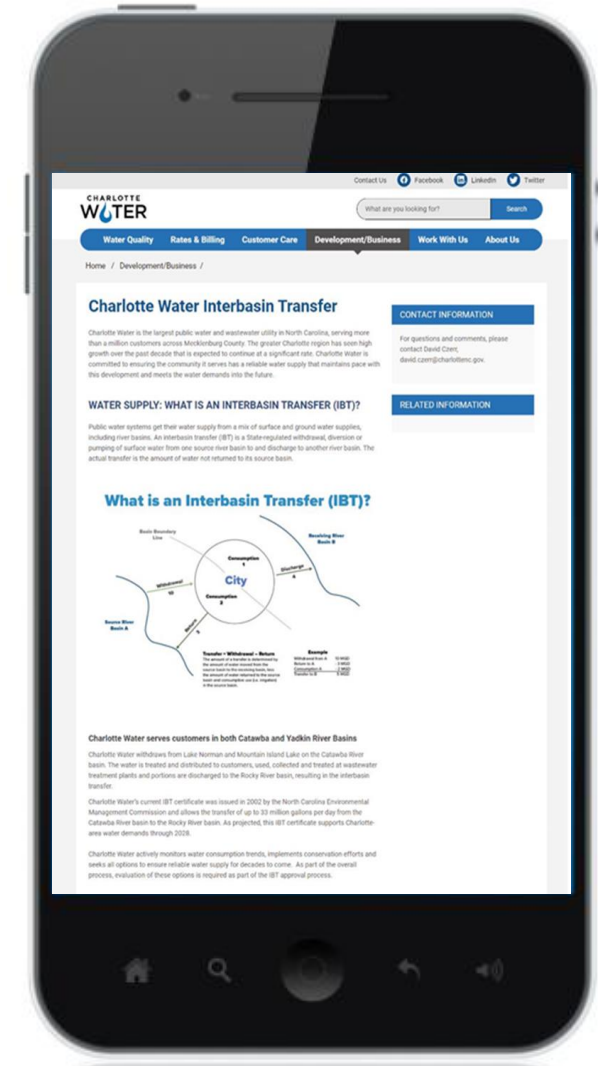
## ▶ **Further refinement during EIS**



**How can I comment and participate in the process?**

# Ways you can learn and participate

- ▶ **Attend public meetings**
- ▶ **To learn more visit: [CharlotteWaterIBT.org](https://CharlotteWaterIBT.org)**
- ▶ **Email comments to: [IBTProject@CharlotteNC.gov](mailto:IBTProject@CharlotteNC.gov)**
- ▶ **Comment on the Draft EIS during the public hearing for determination of adequacy by Environmental Management Commission**
- ▶ **Comment during the Environmental Management Commission hearing on draft IBT determination**



# Public Meetings

▶ **Meeting #1 – Hickory, NC**

*Wednesday, May 8, 5:30-7:00 pm  
Ridgeview Branch Library  
Z. Anne Hoyle Community Room  
706 1<sup>st</sup> St. SW, Hickory, NC 28602*

▶ **Meeting #2 – Charlotte, NC**

*Thursday, May 9, 6:00-7:30 pm  
Charlotte Water  
4100 W. Tyvola Rd, Charlotte, NC 28208*

▶ **Meeting #3 – Albemarle, NC**

*Wednesday, May 15, 5:30-7:00 pm  
EE Waddell Community Center  
Banquet Room  
621 Wall St., Albemarle, NC 28001*

▶ **Meeting #4 – South Carolina**

*TBD*

▶ **Meeting #5 – South Carolina**

*TBD*

For virtual Teams meeting information or to submit a comment/question, visit the Charlotte Water IBT website at:  
**[CharlotteWaterIBT.org](https://CharlotteWaterIBT.org)**

# Questions or Comments?





Translation of this document is available by calling 311 or 704-336-7600.

La traducción de este documento está disponible llamando al 311 o al 704-336-7600.

Bản dịch của tài liệu này có sẵn bằng cách gọi 311 hoặc 704-336-7600.

La traduction de ce document est disponible en appelant le 311 ou le 704-336-7600.

如需本文件的翻译，请致电 311 或 704-336-7600。

311 أو 704-336-7600 ترجمة هذه الوثيقة متاحة عن طريق الاتصال بالرقم