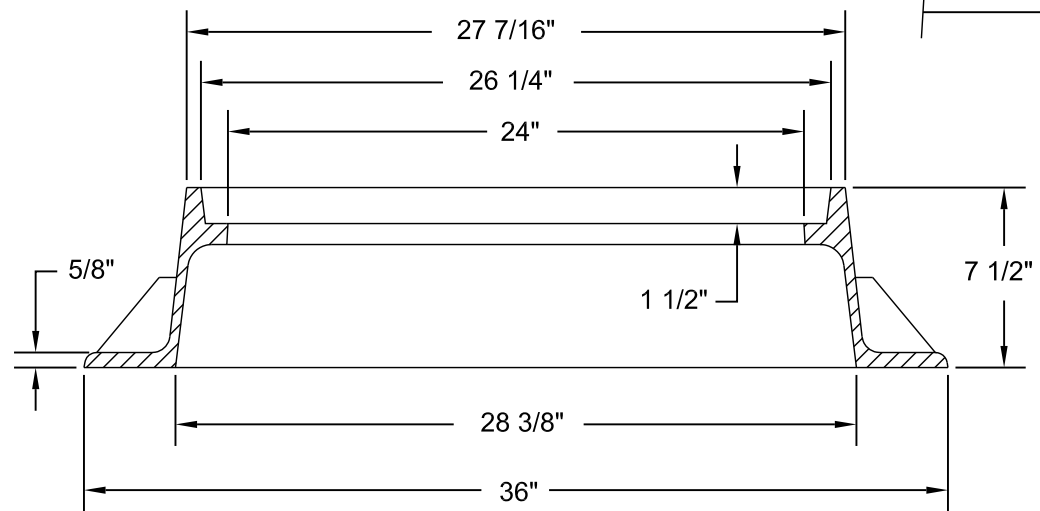
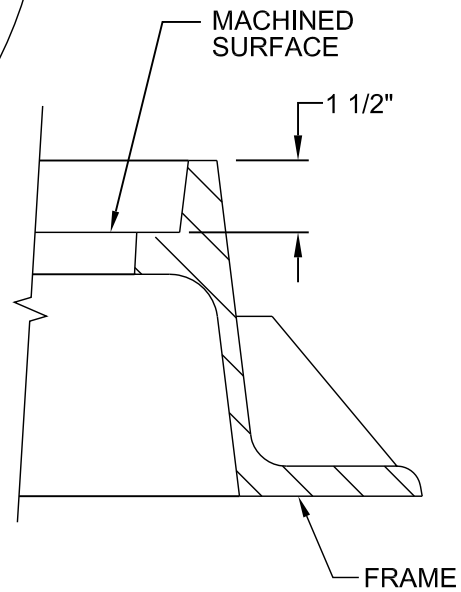
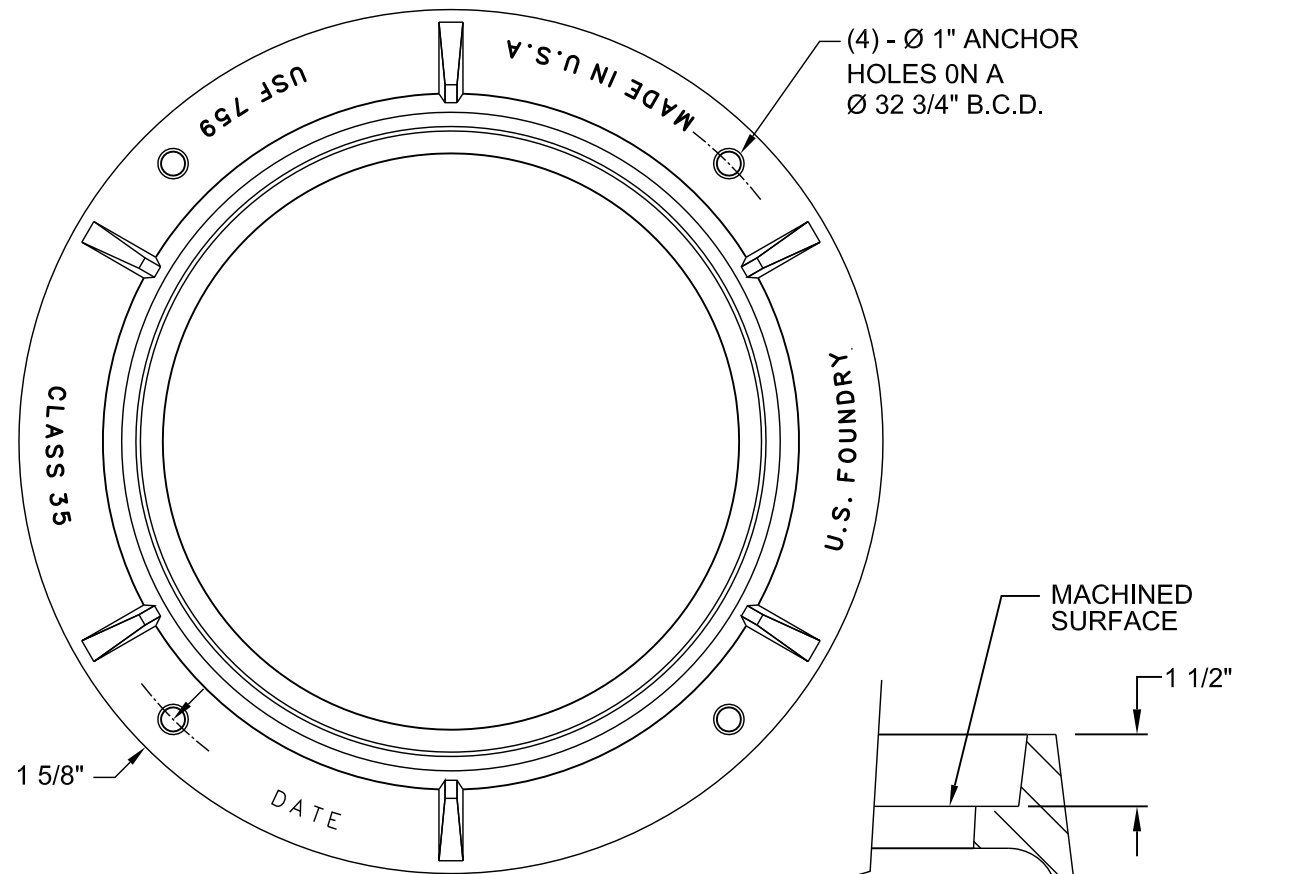


U.S. FOUNDRY & MFG. CORP.



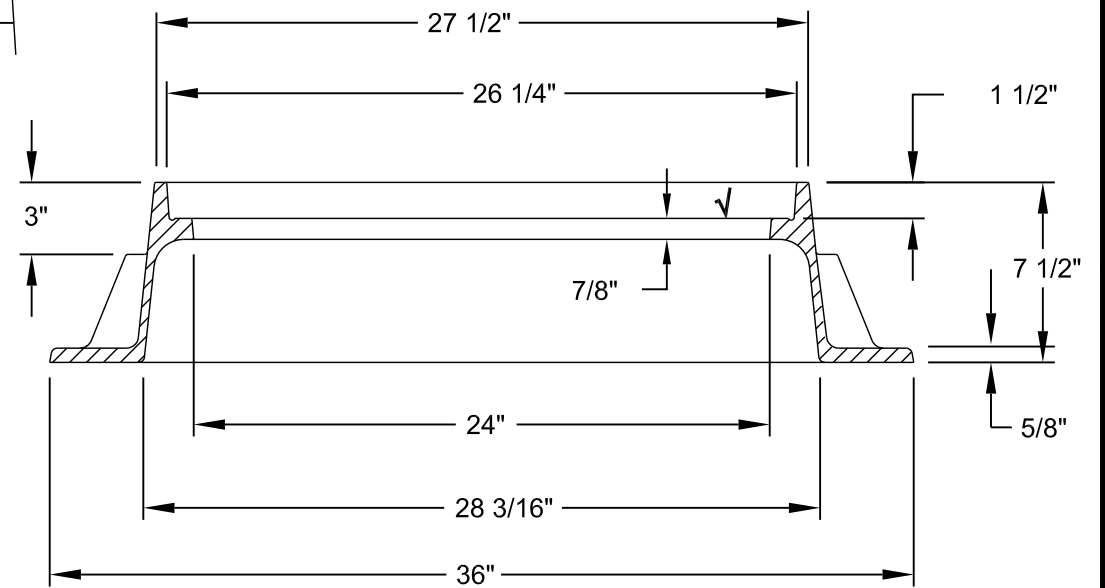
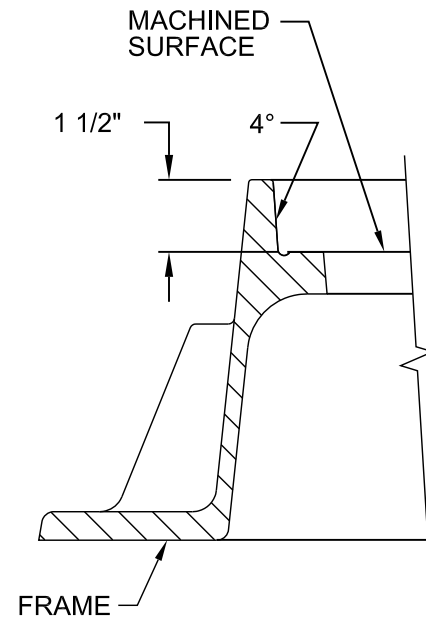
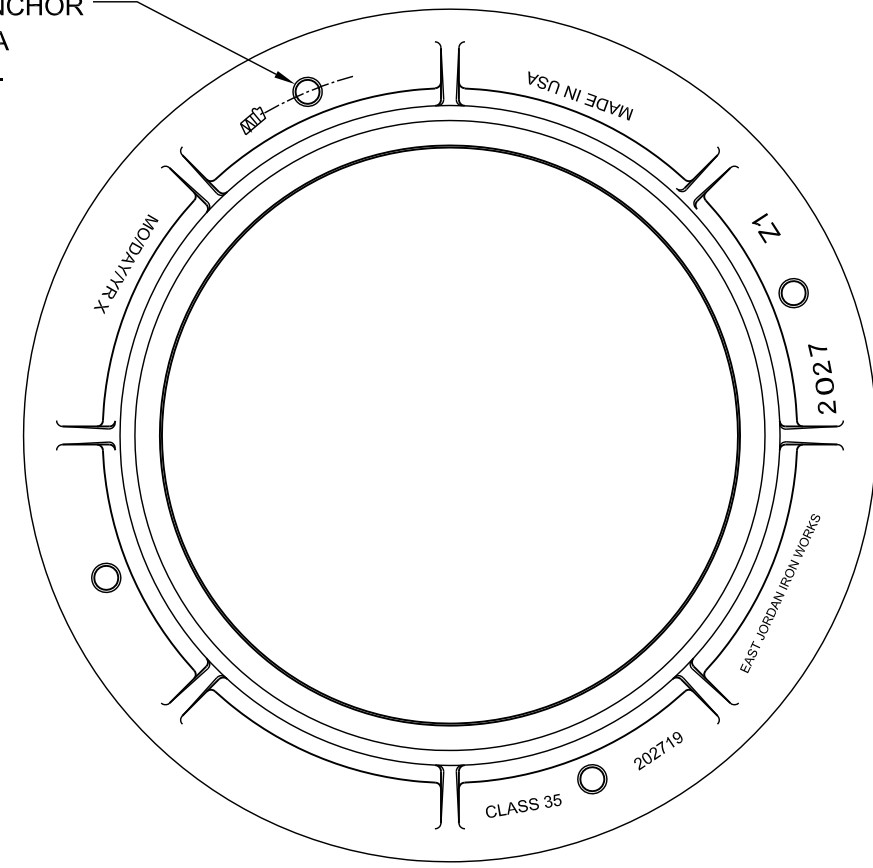
WEIGHT - 170 LB. MIN. , 0% MINUS TOLERANCE

**NOTES:**

LOAD RATING - HEAVY DUTY  
 MATERIAL - ASTM A48 - CLASS 35 GRAY IRON  
 COATING - UNDIPPED

EAST JORDAN IRON WORKS

(4) - Ø 1" ANCHOR HOLES ON A Ø 31" B.C.D.



**FRAME SECTION**

WEIGHT - 173 LB. MIN. , 0% MINUS TOLERANCE

NO SCALE

STANDARD NO.	F
VERSION NO.	V1.1
VERSION DATE	8.18.2009

**TYPE A MANHOLE FRAME**  
**24-INCHES DIAMETER (CLEAR OPENING)**  
**7 1/2-INCHES TALL**

CHARLOTTE-MECKLENBURG UTILITIES  
 STANDARD DETAILS  
 GRAVITY SEWER



USE WITH TYPE 1, 2, OR 3 COVER  
 FRAME SHALL CONFORM TO DIMENSION AND WEIGHT REQUIREMENTS.  
 FRAME SHALL NOT BE OUT OF ROUND.