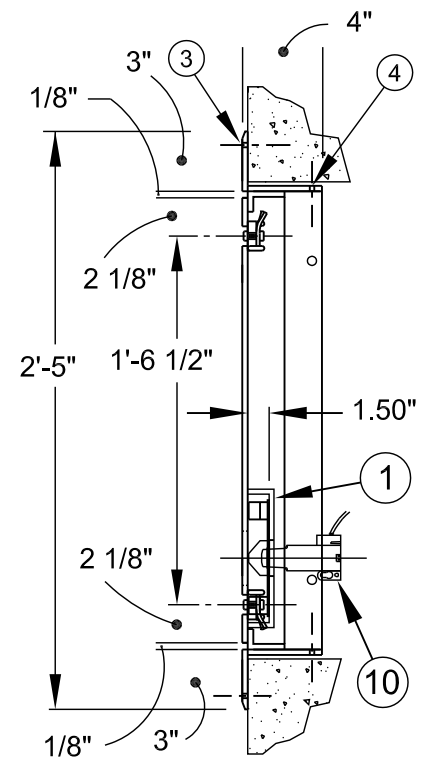
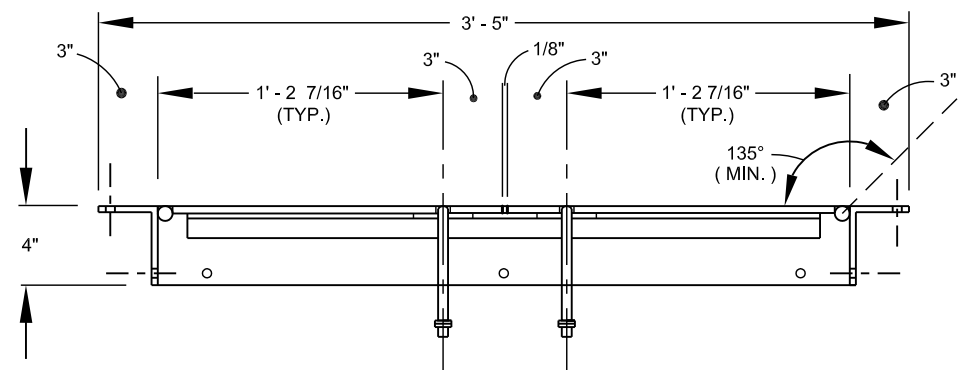


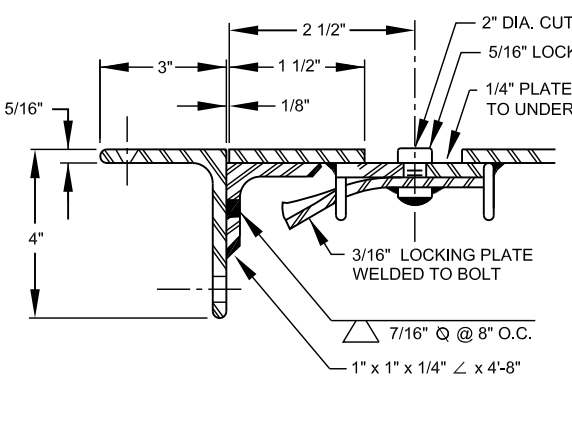
PLAN



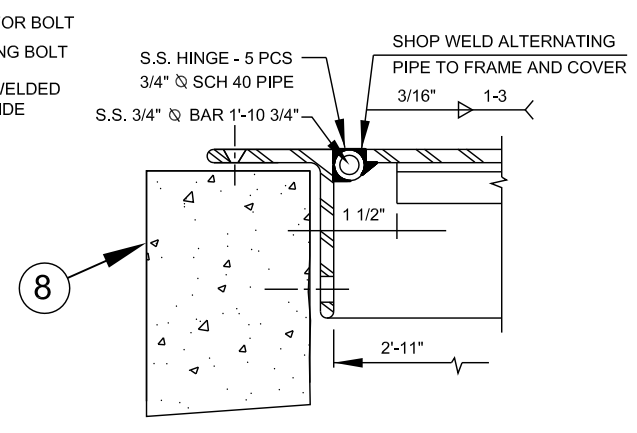
SECTION SIDE



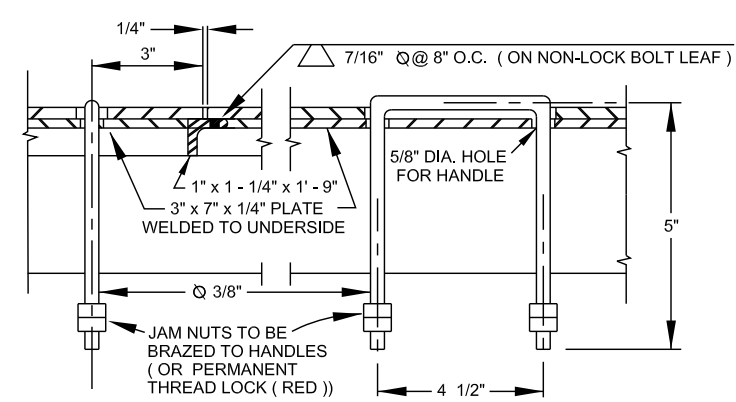
SECTION FRONT



DETAIL A - LOCKING BOLT (2)

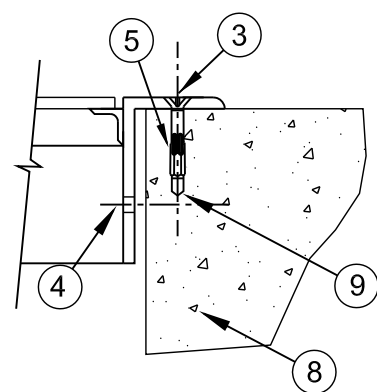


DETAIL B HINGE

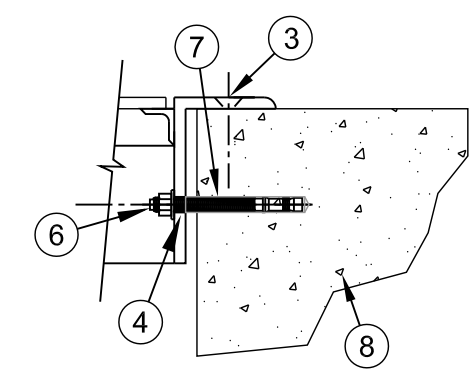


DETAIL C HANDLE (2)

DETAIL D HANDLE



ANCHOR DETAIL
OPTION 1



ANCHOR DETAIL
OPTION 2

NO. DESCRIPTION

1. ERT TRANSMITTER SUPPORT BRACKET. (SEE STANDARD DETAIL)
2. 2 - INCH LETTERING MILLED INTO DOOR LEAF.
3. 7/16 - INCH DIA. DRILLED HOLE (COUNTERSINK) 10 EACH
4. 9/16 - INCH DIAMETER DRILLED HOLE (10 EACH)
5. 3/8 - INCH DIA. x 2 - 7/8 INCH STAINLESS STEEL ANCHOR. (REDHEAD DYNABOLT # SFS - 3826 OR HILTI HLC SLEEVE ANCHOR # HLC - FPH 3/8 - INCH x 2 - 7/8 INCH STAINLESS STEEL OR APPROVED EQUAL)
6. 1/2 - INCH DIAMETER x 4 - 1/2 - INCH DRIVE-IN EXPANSION ANCHOR OR EPOXY ADHESIVE ANCHOR - (RED HEAD, HILTI OR APPROVED EQUAL)
7. 1/2 - INCH DIAMETER DRILLED HOLE IN CONCRETE.
8. CONCRETE VAULT OR PEDESTRIAN SIDEWALK.
9. 3/8 - INCH DIA. DRILLED HOLE - IN CONCRETE.
10. WATER METER ERT TRANSMITTER.
11. RECESSED PADLOCK ASSEMBLY (STANDARD SIZE) WITH STAPLE/SPRING LOADED HINGED LID.
12. PADLOCK TO BE FURNISHED BY CMUD.

DESIGN REQUIREMENTS

- A. MATERIAL - STRUCTURAL STEEL - ASTM A-36.
- B. LIVE LOAD - 300 LBS / SQ. FT. - PEDESTRIAN LOADING. MAXIMUM DEFLECTION 1/150 TH. OF SPAN.
- C. DOOR LEAF - 3/8 - INCH THICK DIAMOND PLATE.
- D. HINGES SHALL BE SET SO DOORS OPEN 135° TO 180° BEYOND FULL CLOSE.
- E. HINGE (PIPE AND BAR) - TYPE 304 STAINLESS STEEL.

NOTE:

- a. FRAME SHALL BE FURNISHED WITH ANCHOR HOLES NO. 3 AND NO. 4.
- b. CONTRACTOR SHALL ANCHOR FRAME USING ANCHOR HOLES NO. 3 OR NO. 4 - AS APPROVED. (OPTION ONE OR OPTION TWO)
- c. FRAME AND COVER TO BE SHOP COATED WITH ZINC CHROMATE PRIMER AND ONE BLACK ENAMEL. FIELD APPLY ONE COAT OF COMPATIBLE BLACK ENAMEL AT FINAL INSPECTION.
- d. FRAME DIMENSIONS SHALL ALLOW FOR CLOSE FIT INSIDE VAULT AS SHOWN AT TOP OF VAULT WALLS.

WARNING NOTE:

THIS DOOR IS NOT TO BE USED IN OR ADJACENT TO DRIVEWAYS OR ANY AREA SUBJECT TO VEHICLE WHEEL LOADS, OR ANY LOAD GREATER THAN 300 PSF.

NO SCALE
 STANDARD NO. T
 VERSION DATE 8.24.2011
 VERSION NO. V1.3
 CHARLOTTE-MECKLENBURG UTILITIES
 STANDARD DETAILS
 WATER
 CHARLOTTE

STEEL DOUBLE LEAF ACCESS DOOR - 2' X 3'
 PEDESTRIAN LOADING (300 PSF) FOR
 1 1/2" AND 2-INCH WATER METER VAULT